

END BENT 1

END BENT 2

FOUNDATION LAYOUT

BRACE PILES AT END BENT 1 ARE TO BE BATTERED AT 3:12.

NOTES

FOR PILES, SEE GEOTECHNICAL SPECIAL PROVISIONS AND SECTION 450 OF THE STANDARD SPECIFICATIONS.

PILES AT END BENT 1 ARE DESIGNED FOR A FACTORED RESISTANCE OF 135 TONS PER PILE.

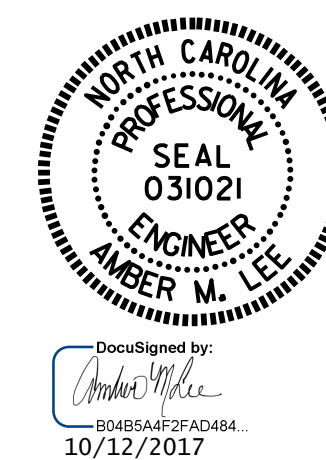
DRIVE PILES AT END BENT 1 TO A REQUIRED DRIVING RESISTANCE OF 225 TONS PER PILE.

THE SPREAD FOOTING AT END BENT 2 IS DESIGNED FOR A FACTORED RESISTANCE OF 8 TSF. CHECK FIELD CONDITIONS FOR THE REQUIRED RESISTANCE OF 18 TSF JUST BEFORE PLACING CONCRETE.

KEY IN FOOTING AT END BENT 2 AT LEAST 6" INTO ROCK WITH MINIMUM THICKNESS AS SHOWN ON THE PLANS.

PROJECT NO. B-4978
WILKES COUNTY
 STATION: 12+36.12 -L-

SHEET 2 OF 3



STATE OF NORTH CAROLINA
 DEPARTMENT OF TRANSPORTATION
 RALEIGH

GENERAL DRAWING
 FOR BRIDGE OVER SOUTH
 PRONG LEWIS FORK CREEK ON
 SR 1154 BETWEEN
 SR 1305 AND US 421

DRAWN BY : M. WELDON DATE : 07-2017
 CHECKED BY : H. T. BARBOUR DATE : 08-2017

DOCUMENT NOT CONSIDERED
 FINAL UNLESS ALL
 SIGNATURES COMPLETED

REVISIONS						SHEET NO.
NO.	BY:	DATE:	NO.	BY:	DATE:	S-2
1			3			TOTAL SHEETS
2			4			19