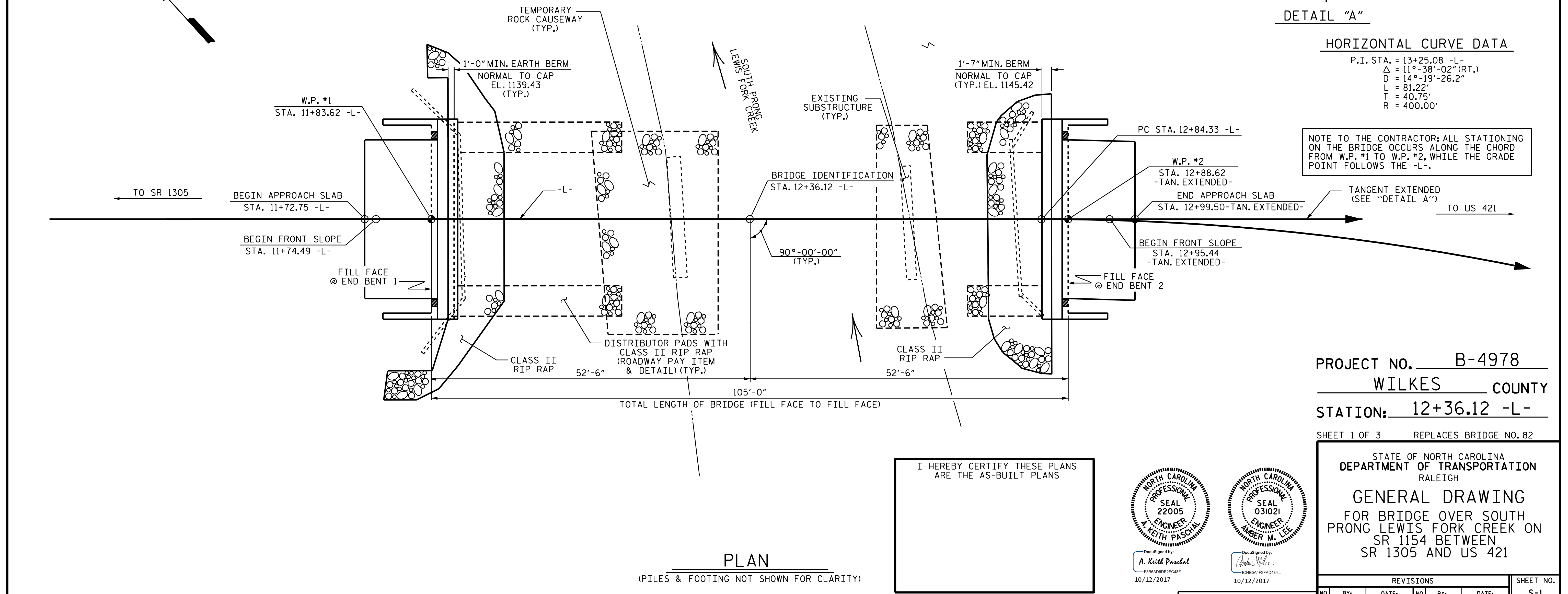


SECTION ALONG -L-

HORIZONTAL CURVE DATA

P.I. STA. = 13+25.08 -L-
 $\Delta = 11^\circ-38'-02''$ (RT.)
 $D = 14^\circ-19'-26.2''$
 $L = 81.22'$
 $T = 40.75'$
 $R = 400.00'$

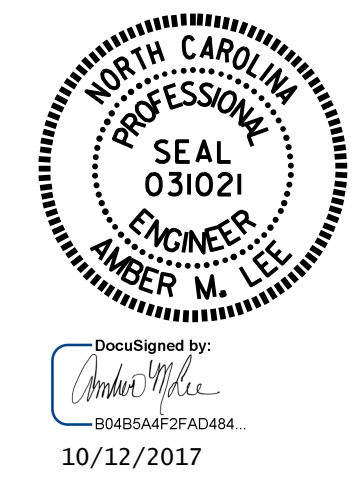
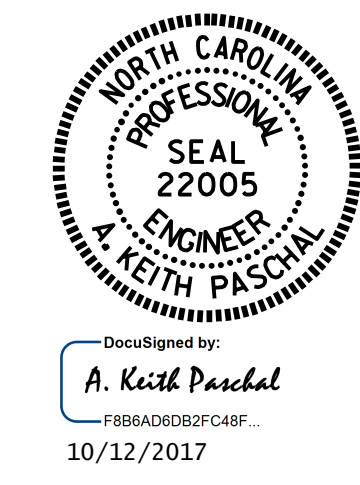
NOTE TO THE CONTRACTOR: ALL STATIONING ON THE BRIDGE OCCURS ALONG THE CHORD FROM W.P. #1 TO W.P. #2, WHILE THE GRADE POINT FOLLOWS THE -L-.



PLAN

(PILES & FOOTING NOT SHOWN FOR CLARITY)

I HEREBY CERTIFY THESE PLANS ARE THE AS-BUILT PLANS



PROJECT NO. B-4978
WILKES COUNTY
 STATION: 12+36.12 -L-
 SHEET 1 OF 3 REPLACES BRIDGE NO. 82

STATE OF NORTH CAROLINA
 DEPARTMENT OF TRANSPORTATION
 RALEIGH

GENERAL DRAWING
 FOR BRIDGE OVER SOUTH PRONG LEWIS FORK CREEK ON SR 1305 AND US 421

DRAWN BY: R. PUITEK DATE: 8/2017
 CHECKED BY: H. T. BARBOUR DATE: 8/2017

DOCUMENT NOT CONSIDERED FINAL UNLESS ALL SIGNATURES COMPLETED

REVISIONS						SHEET NO.
NO.	BY:	DATE:	NO.	BY:	DATE:	S-1
1			3			TOTAL SHEETS
2			4			19