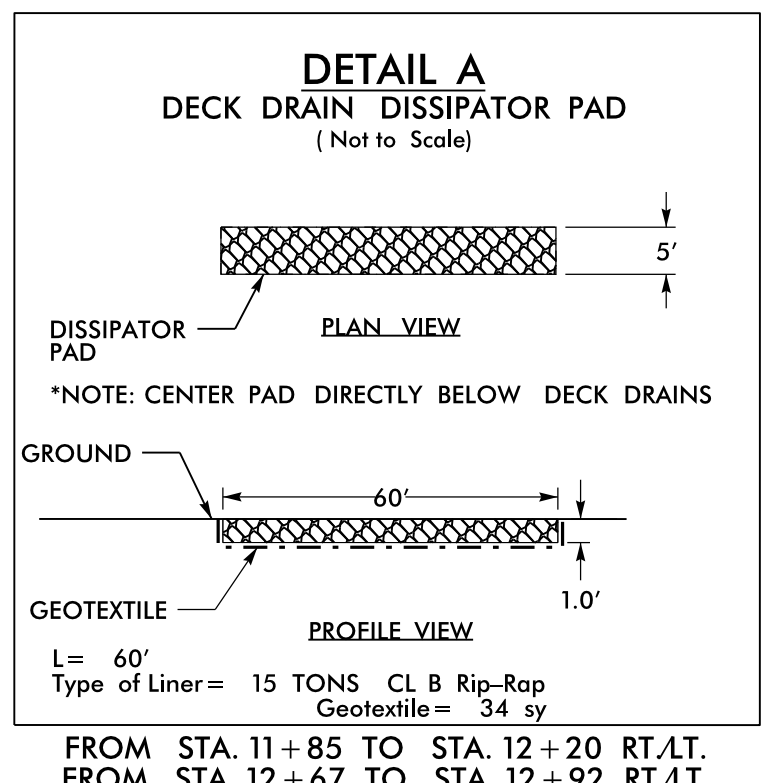


PROJECT REFERENCE NO. B-4978	SHEET NO. EC-4/CONST.4
RW SHEET NO.	HYDRAULICS ENGINEER
ROADWAY DESIGN ENGINEER	

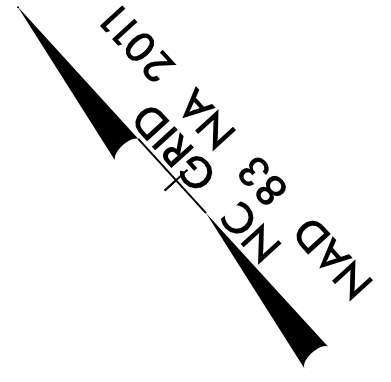


-Y- PI Sta 11+03.50 $\Delta = 29^{\circ} 41' 08.3''$ (LT) $D = 35^{\circ} 48' 35.5''$ $L = 82.90'$ $T = 42.40'$ $R = 160.00'$ SE = EXIST	-L- PI Sta 10+53.94 $\Delta = 15^{\circ} 23' 51.2''$ (LT) $D = 38^{\circ} 11' 49.9''$ $L = 40.31'$ $T = 20.28'$ $R = 150.00'$ $V_s = 25$ mph	PI Sta 11+11.55 $\Delta = 68^{\circ} 40' 46.2''$ (LT) $D = 104^{\circ} 10' 26.9''$ $L = 65.93'$ $T = 37.57'$ $R = 55.00'$ SE = SEE PLANS	-L- PI Sta 13+25.08 $\Delta = 11^{\circ} 38' 02.9''$ (RT) $D = 14^{\circ} 19' 26.2''$ $L = 81.22'$ $T = 40.75'$ $R = 400.00'$ $V_s = 35$ mph	PI Sta 14+40.57 $\Delta = 10^{\circ} 42' 51.1''$ (RT) $D = 7^{\circ} 09' 43.1''$ $L = 149.60'$ $T = 75.02'$ $R = 800.00'$ SE = EXIST
---	---	--	---	--

NOTE: PLACE TEMPORARY ROCK SEDIMENT DAMS TYPE - B AND TEMPORARY ROCK SILT CHECKS TYPE - A AT DRAINAGE OUTLETS.

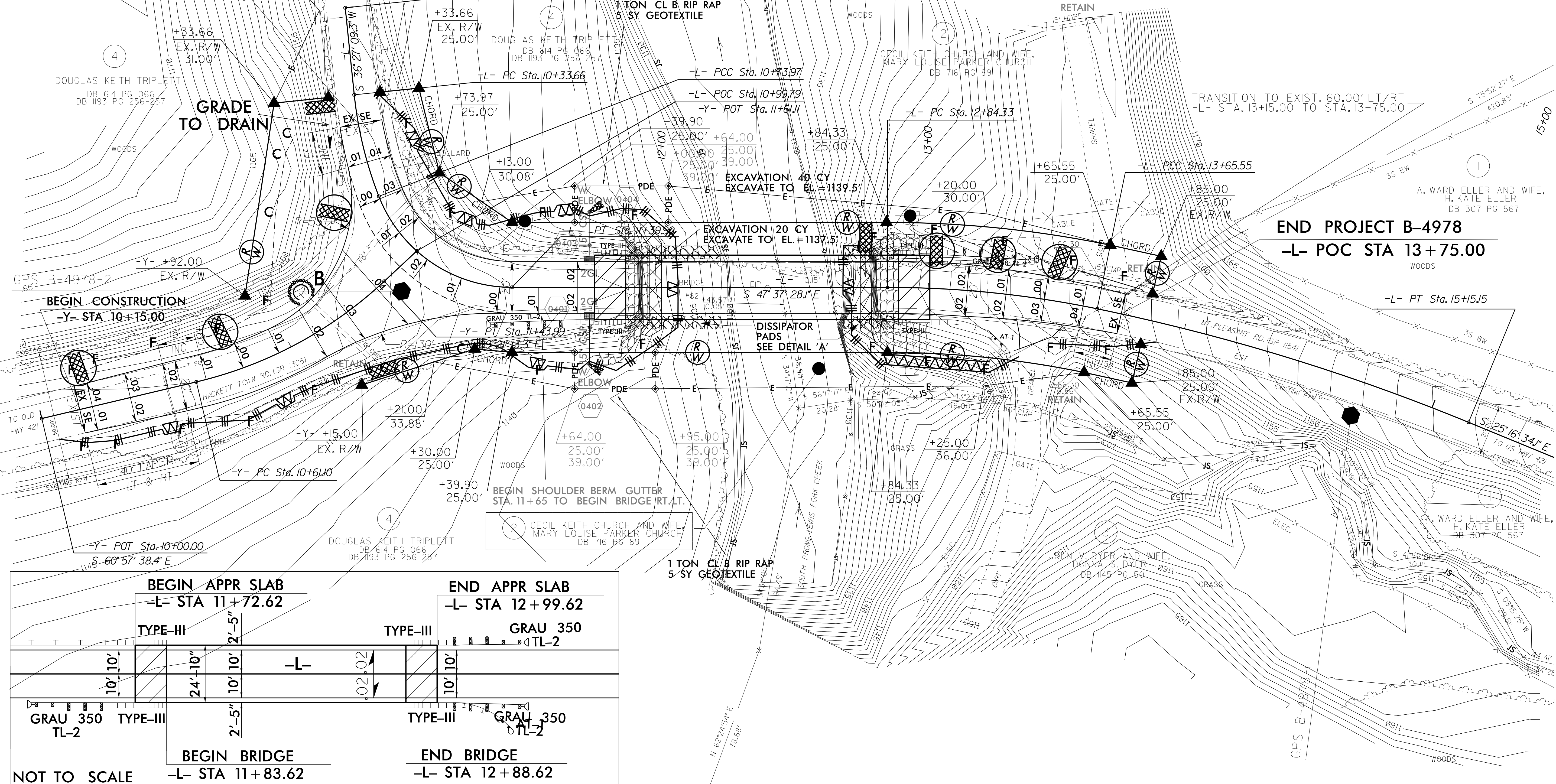
NOTE: UTILIZE SPECIAL STILLING BASIN(S) WHERE APPLICABLE

CLEARING AND GRUBBING EROSION CONTROL FOR CONSTRUCTION SHEET 4



BEGIN PROJECT B-4978
-L- POC STA 10+45.00

END PROJECT B-4978
-L- POC STA 13+75.00



BEGIN APPR SLAB -L- STA 11+72.62		END APPR SLAB -L- STA 12+99.62	
TYPE-III	GRAU 350 TL-2	TYPE-III	GRAU 350 TL-2
10' 10"	2'-5"	10' 10"	2'-5"
24'-10"	10' 10"	10' 10"	10' 10"
BEGIN BRIDGE -L- STA 11+83.62		END BRIDGE -L- STA 12+88.62	
GRAU 350 TYPE-III TL-2		GRAU 350 TL-2	

RELATIONSHIP OF BRIDGE TO ROADWAY

SEE SHEET 5 FOR -L- AND -Y- PROFILES
SEE SHEET S- TO S- FOR STRUCTURE PLANS

8/17/09
 I:\L-2017 15159 d\Design\B-4978.EC.psh.dgn
 11/11/2017 10:55:59 AM
 11/11/2017 10:55:59 AM