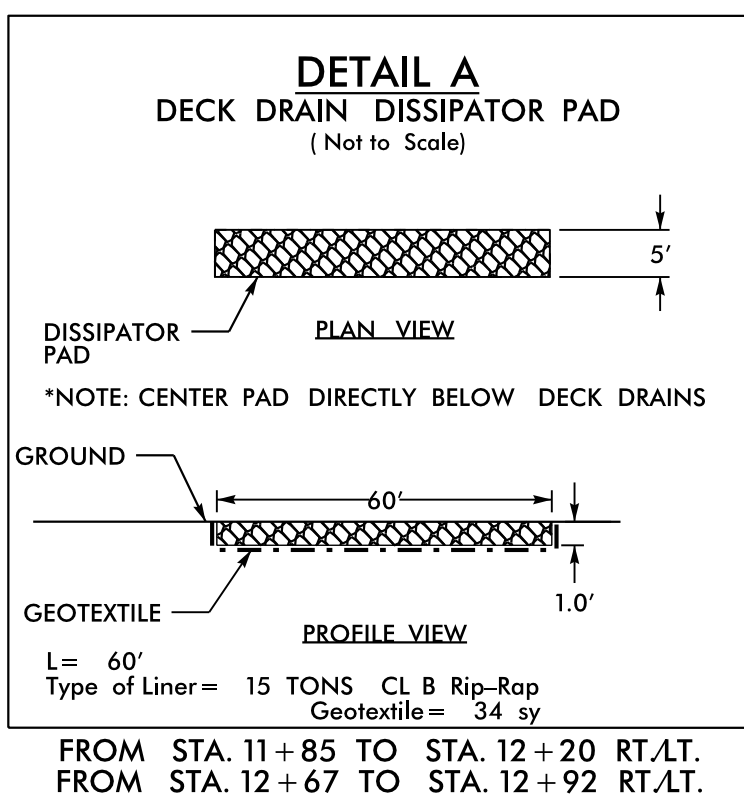
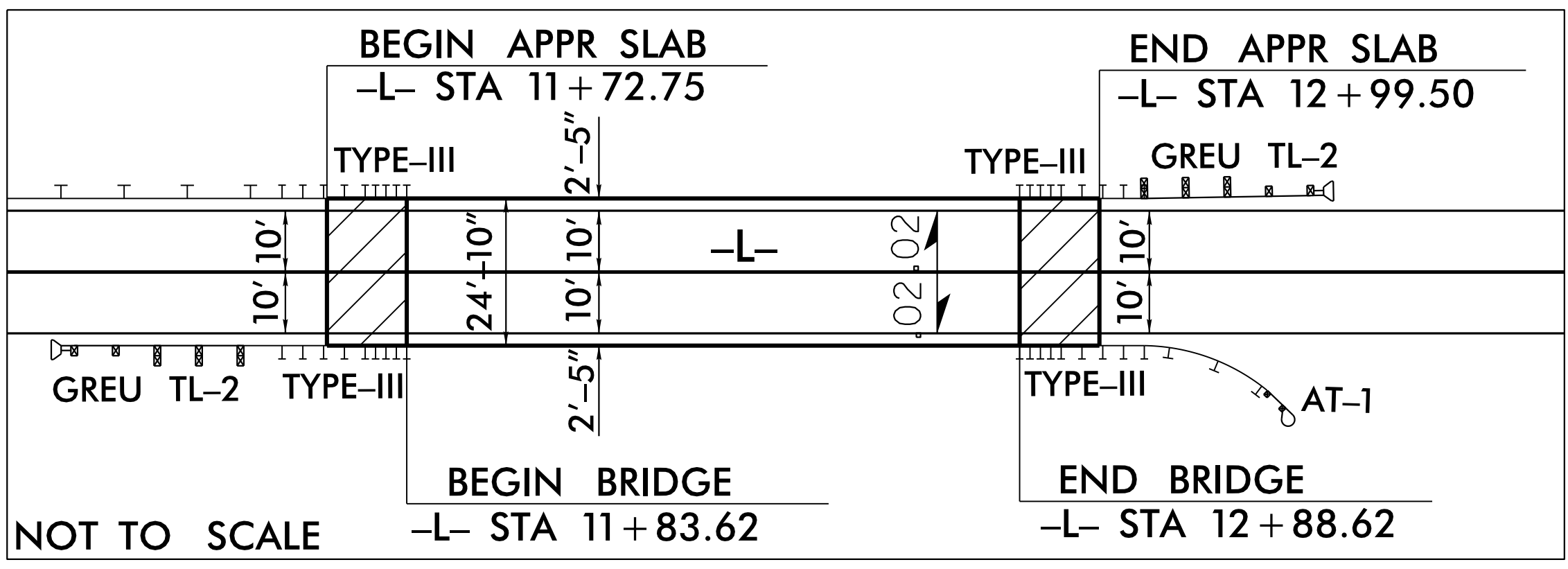
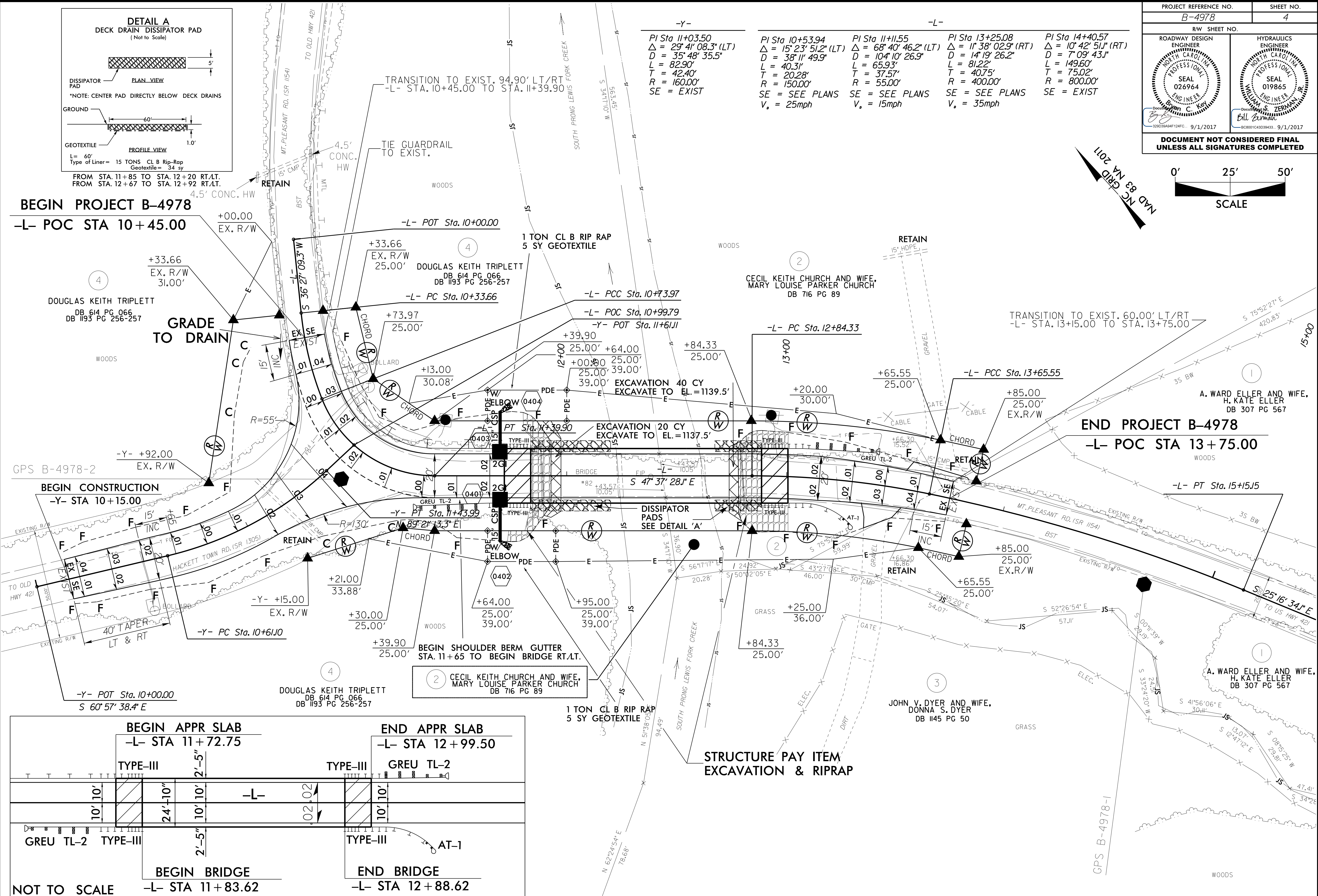


-Y-	-L-	-L-	-L-	-L-
PI Sta 11+03.50	PI Sta 10+53.94	PI Sta 11+11.55	PI Sta 13+25.08	PI Sta 14+40.57
$\Delta = 29^\circ 41' 08.3" (LT)$	$\Delta = 15^\circ 23' 51.2" (LT)$	$\Delta = 68^\circ 40' 46.2" (LT)$	$\Delta = 11^\circ 38' 02.9" (RT)$	$\Delta = 10^\circ 42' 51.1" (RT)$
$D = 35^\circ 48' 35.5"$	$D = 38^\circ 11' 49.9"$	$D = 104^\circ 10' 26.9"$	$D = 14^\circ 19' 26.2"$	$D = 7^\circ 09' 43.1"$
$L = 82.90'$	$L = 40.31'$	$L = 65.93'$	$L = 81.22'$	$L = 149.60'$
$T = 42.40'$	$T = 20.28'$	$T = 37.57'$	$T = 40.75'$	$T = 75.02'$
$R = 160.00'$	$R = 150.00'$	$R = 55.00'$	$R = 400.00'$	$R = 800.00'$
SE = EXIST	SE = SEE PLANS	SE = SEE PLANS	SE = SEE PLANS	SE = EXIST
	$V_s = 25\text{mph}$	$V_s = 15\text{mph}$	$V_s = 35\text{mph}$	



BEGIN PROJECT B-4978
-L- POC STA 10+45.00

END PROJECT B-4978
-L- POC STA 13+75.00



SEE SHEET 5 FOR -L- AND -Y- PROFILES
SEE SHEET S-1 TO S-19 FOR STRUCTURE PLANS

REVISIONS

P:\AUG-2017\16:34\B-4978-Roadway.dgn
3:54:58 PM 8/17/17