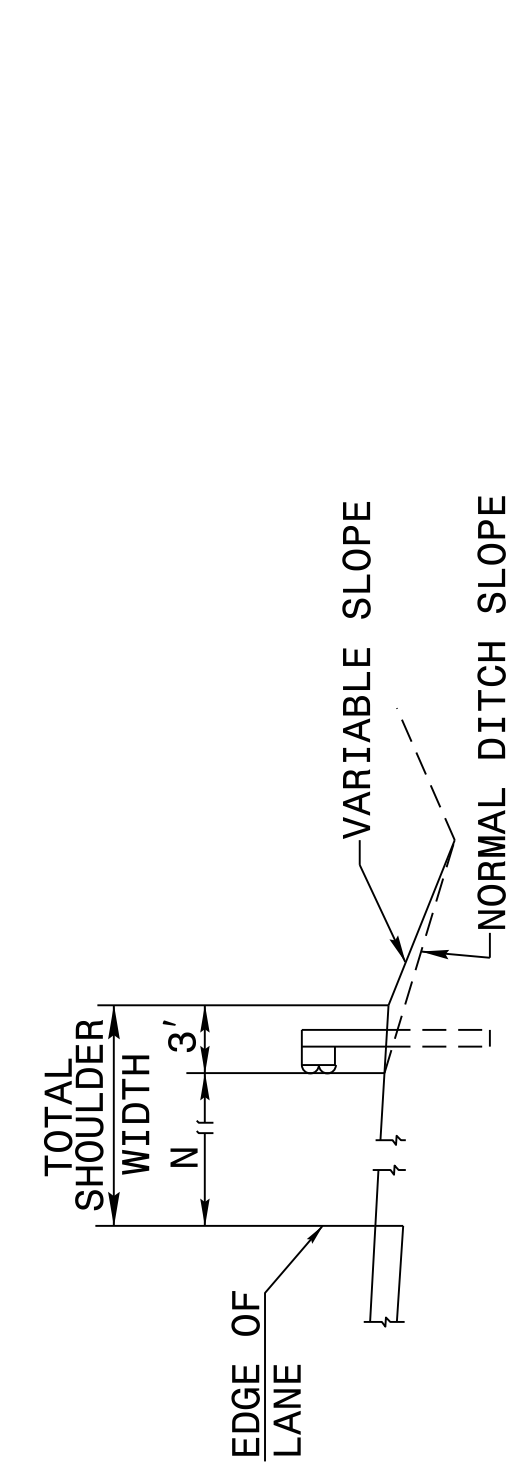
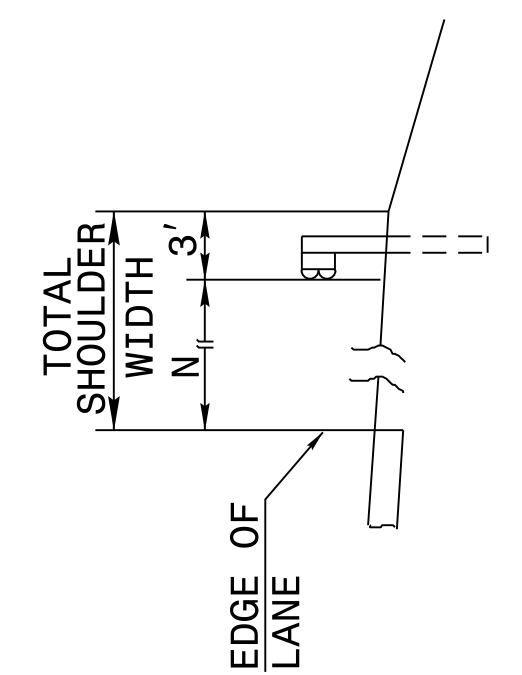


03-AUG-2017 15:47
 S:\Contracts\Projects\Special Details\Standard Drawings\2012 Standard Drawings\Division 8\862d01 862d03 862d03\862d01.dgn
 Jhowerton AT_CSD-292595

STATE OF
NORTH CAROLINA
DEPT. OF TRANSPORTATION
DIVISION OF HIGHWAYS
RALEIGH, N.C.

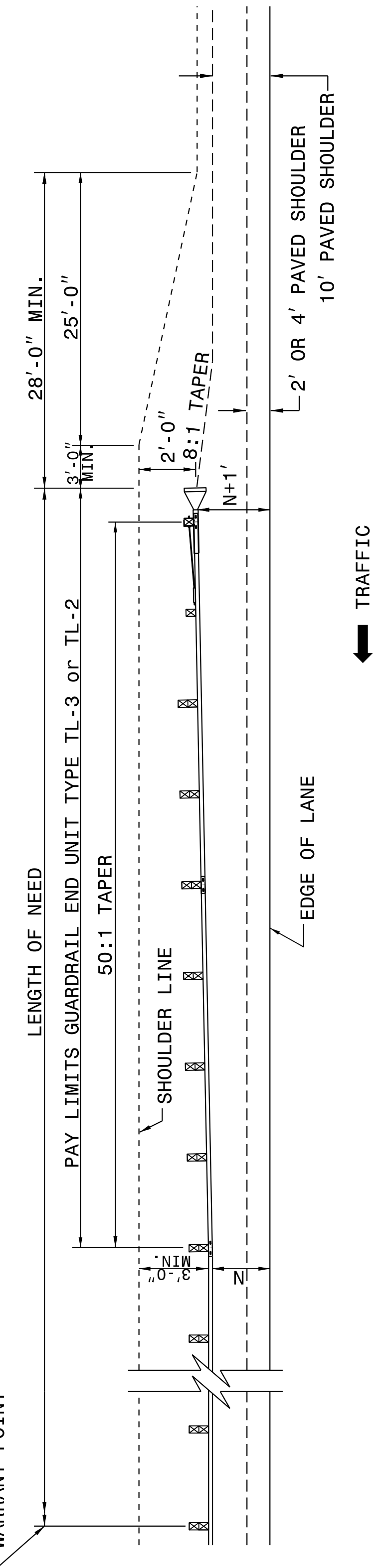


CUT SECTION



FILL SECTION

"N" = DISTANCE FROM EDGE OF LANE TO FACE OF GUARDRAIL WHERE GUARDRAIL IS PARALLEL TO LANE.



FOR POSTED SPEEDS ≥ 45mph USE GREU TYPE TL-3
 FOR POSTED SPEEDS < 45mph USE GREU TYPE TL-2

ROADWAY DETAIL DRAWING FOR
GUARDRAIL PLACEMENT

SHEET 6 OF 11
862D01

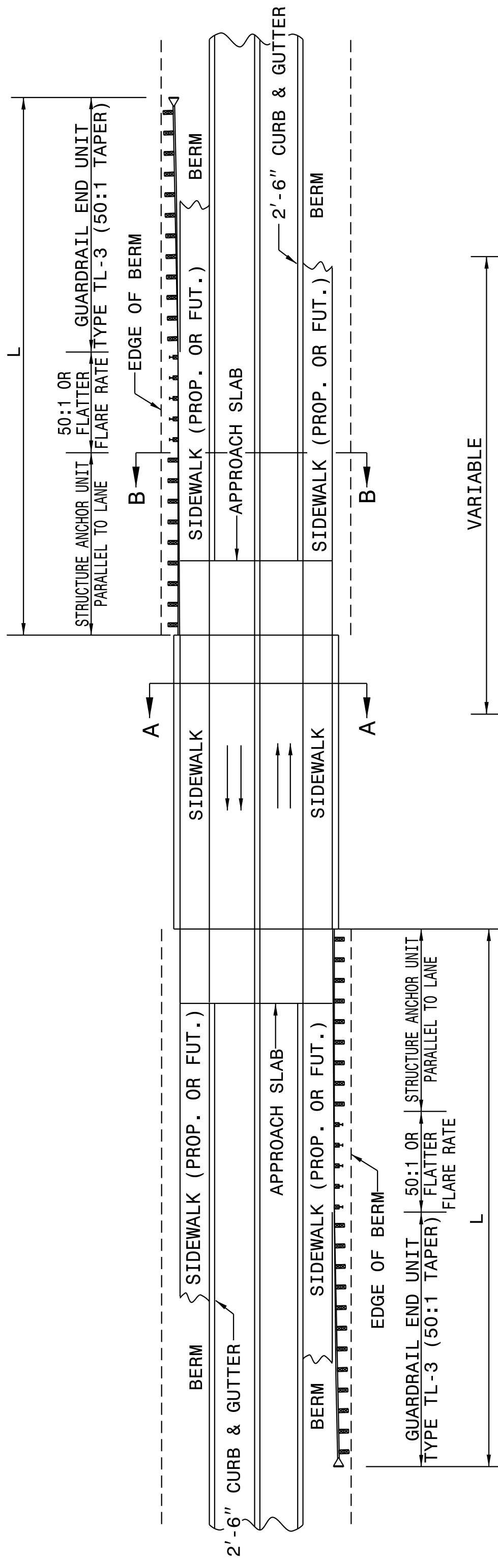
STATE OF
NORTH CAROLINA
DEPT. OF TRANSPORTATION
DIVISION OF HIGHWAYS
RALEIGH, N.C.

ROADWAY DETAIL DRAWING FOR
GUARDRAIL PLACEMENT

SHEET 6 OF 11
862D01

DETAIL OF BEGINNING OF GUARDRAIL IN CUT OR FILL SECTION

STATE OF
NORTH CAROLINA
DEPT. OF TRANSPORTATION
DIVISION OF HIGHWAYS
RALEIGH, N.C.



MINIMUM GUARDRAIL LENGTHS "L" REQUIRED AT BRIDGE APPROACHES ON 2'-6" CONCRETE CURB AND GUTTER ROADWAYS	"L"
DESIGN SPEED (MPH)	"L"
40	150'
50	225'

NOTE: "L" VALUES ARE BASED ON NO HAZARDS OTHER THAN END OF BRIDGE BEING PRESENT WITHIN THE CLEAR ZONE.

SEE STD. 862D03 FOR STRUCTURE ANCHOR UNITS.

FOR POSTED SPEEDS ≥ 45mph USE GREU TYPE TL-3
 FOR POSTED SPEEDS < 45mph USE GREU TYPE TL-2

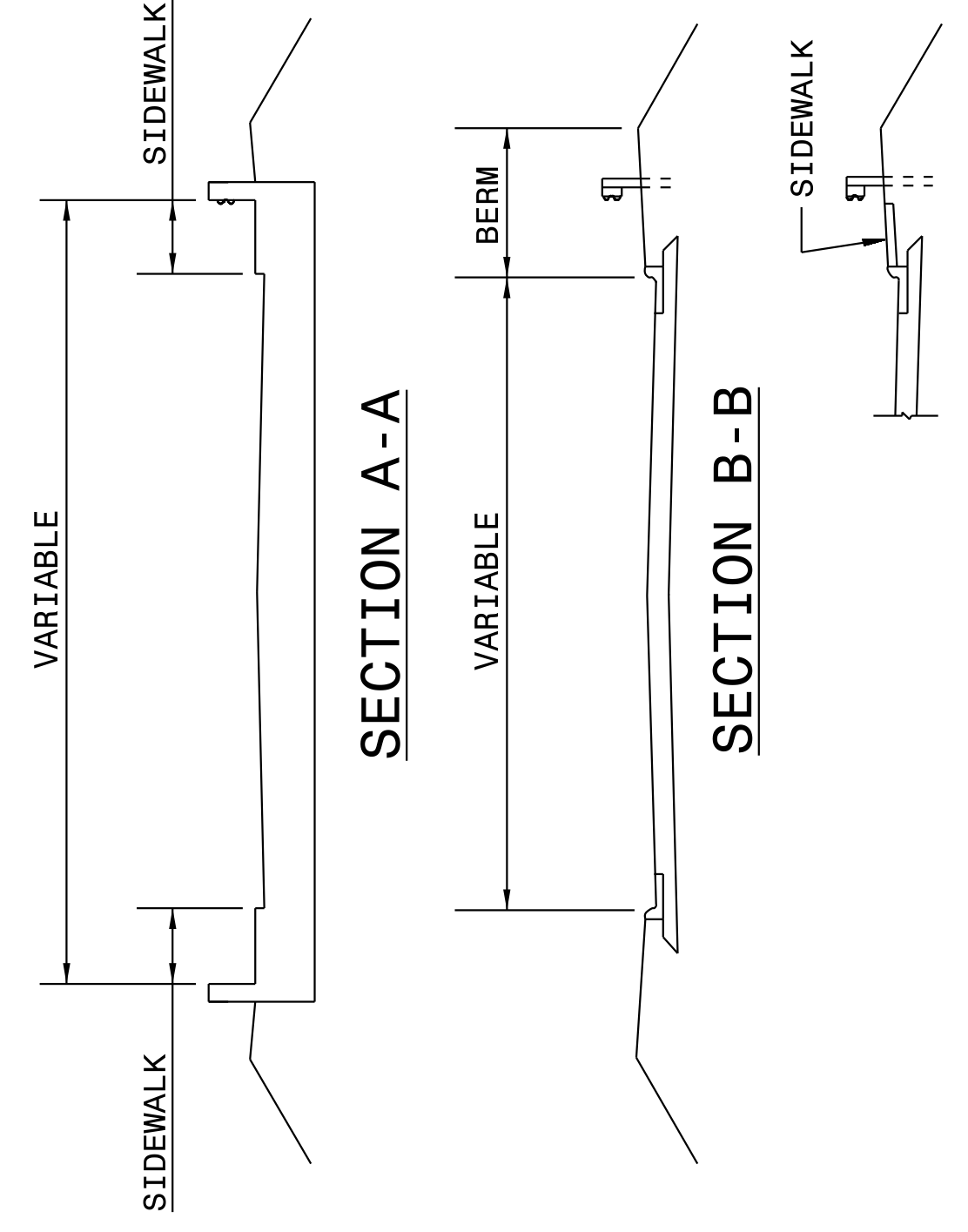
ROADWAY DETAIL DRAWING FOR
GUARDRAIL PLACEMENT

SHEET 5 OF 11
862D01

ROADWAY DETAIL DRAWING FOR
GUARDRAIL PLACEMENT

SHEET 5 OF 11
862D01

STANDARD GUARDRAIL PLACEMENT AT BRIDGES WITH 2'-6" CONCRETE CURB AND GUTTER



DOCUMENT NOT CONSIDERED FINAL
UNLESS ALL SIGNATURES COMPLETED

**CONTRACT STANDARDS
AND DEVELOPMENT UNIT**
Office 919-707-6950 FAX 919-250-4119

SEE TITLE BLOCK

ORIGINAL BY: J. HOWERTON	DATE: 06-22-12
MODIFIED BY:	DATE:
CHECKED BY:	DATE:
FILE SPEC.:	



DocuSigned by:
J. S. Howerton 9/25/2017
873F3D17DCDC45F