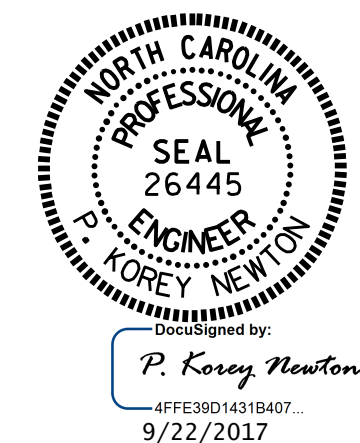
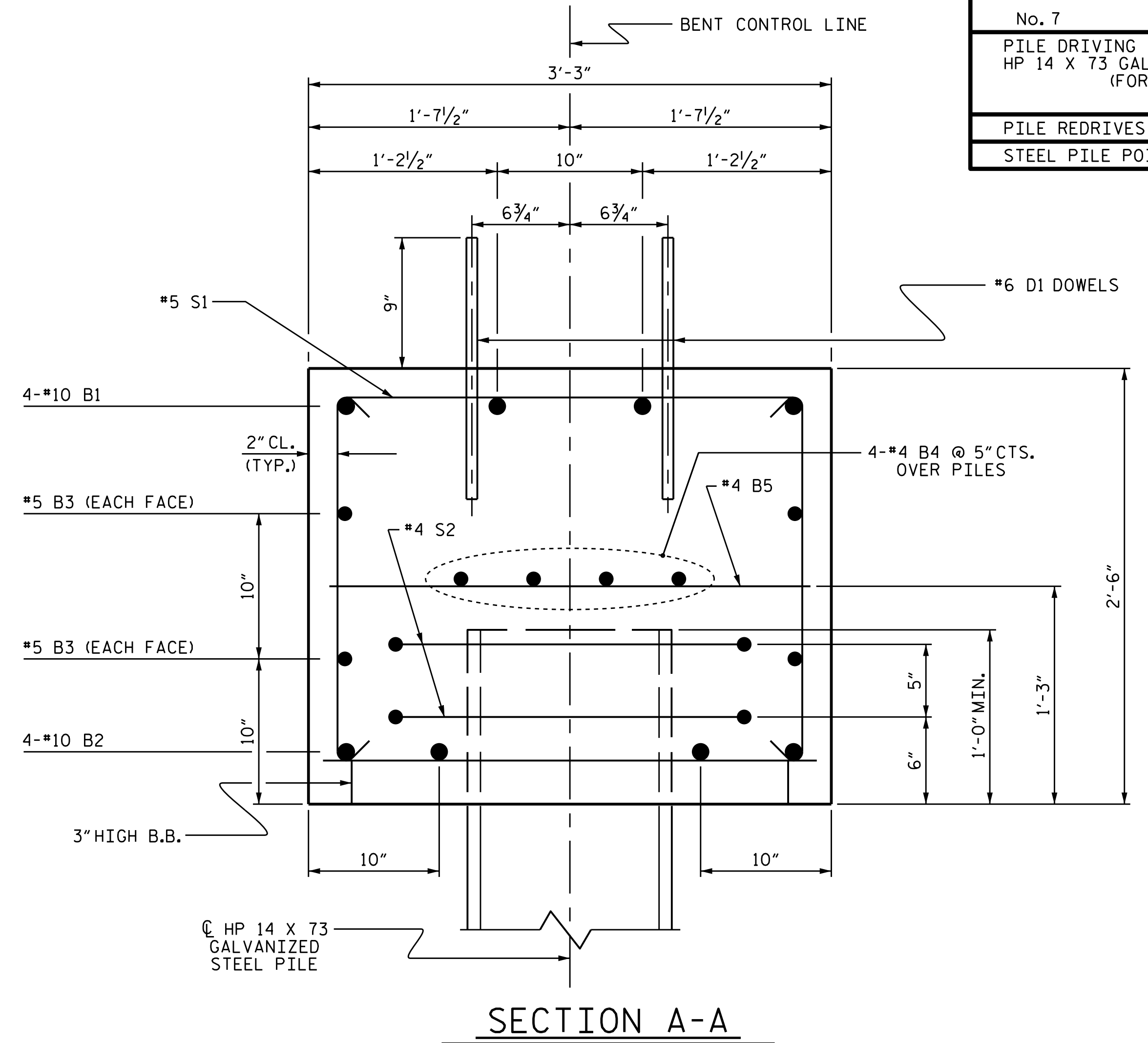
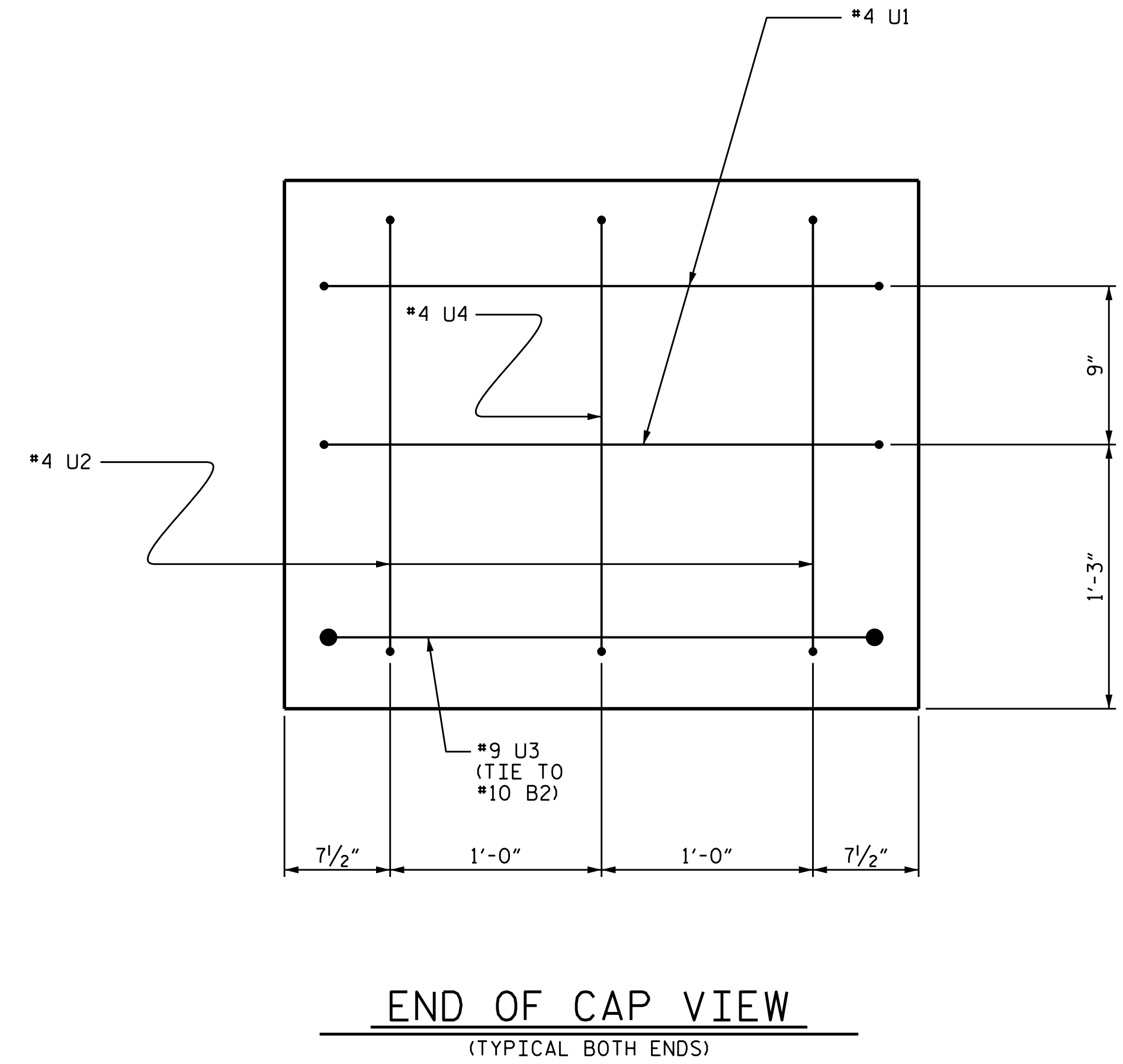


BILL OF MATERIAL FOR ONE BENT					
BAR	NO.	SIZE	TYPE	LENGTH	WEIGHT
B1	4	#10	1	34'-10"	600
B2	4	#10	STR	32'-2"	554
B3	4	#5	STR	32'-2"	134
B4	8	#4	STR	17'-4"	93
B5	8	#4	STR	2'-11"	16
D1	40	#6	STR	1'-6"	90
S1	32	#5	2	8'-1"	270
S2	14	#4	3	7'-7"	71
U1	4	#4	4	5'-10"	16
U2	4	#4	4	5'-0"	13
U3	2	#9	4	10'-1"	69
U4	2	#4	4	4'-2"	6
REINFORCING STEEL (FOR ONE BENT)					1932 LBS
CLASS A CONCRETE BREAKDOWN (FOR ONE BENT)					
TOTAL CLASS A CONCRETE					9.8 C.Y.

BENT No. 1		BENT No. 2	
HP 14 X 73 GALVANIZED STEEL PILES (FOR ONE BENT)		HP 14 X 73 GALVANIZED STEEL PILES (FOR ONE BENT)	
No. 7 LIN. FT. 315		No. 7 LIN. FT. 385	
PILE DRIVING EQUIPMENT SETUP FOR HP 14 X 73 GALVANIZED STEEL PILES (FOR ONE BENT)	NO: 7	PILE DRIVING EQUIPMENT SETUP FOR HP 14 X 73 GALVANIZED STEEL PILES (FOR ONE BENT)	NO: 7
PILE REDRIVES	NO: 4	PILE REDRIVES	NO: 4
STEEL PILE POINTS	NO: 7		



PROJECT NO. B-5304
PENDER COUNTY
STATION: 12+27.00 -L-
SHEET 3 OF 3

STATE OF NORTH CAROLINA
DEPARTMENT OF TRANSPORTATION
RALEIGH
SUBSTRUCTURE
BENT No. 1 & 2

ASSEMBLED BY : G. KOUCHEKI DATE : 9/16
CHECKED BY : J. D. HAWK DATE : 8/10/17
DRAWN BY : DGE 05/10
CHECKED BY : MKT 05/10

REV. 6/17 MAA/THC

DOCUMENT NOT CONSIDERED FINAL UNLESS ALL SIGNATURES COMPLETED

REVISIONS						SHEET NO.
NO.	BY:	DATE:	NO.	BY:	DATE:	S-23
1			3			TOTAL SHEETS 25
2			4			