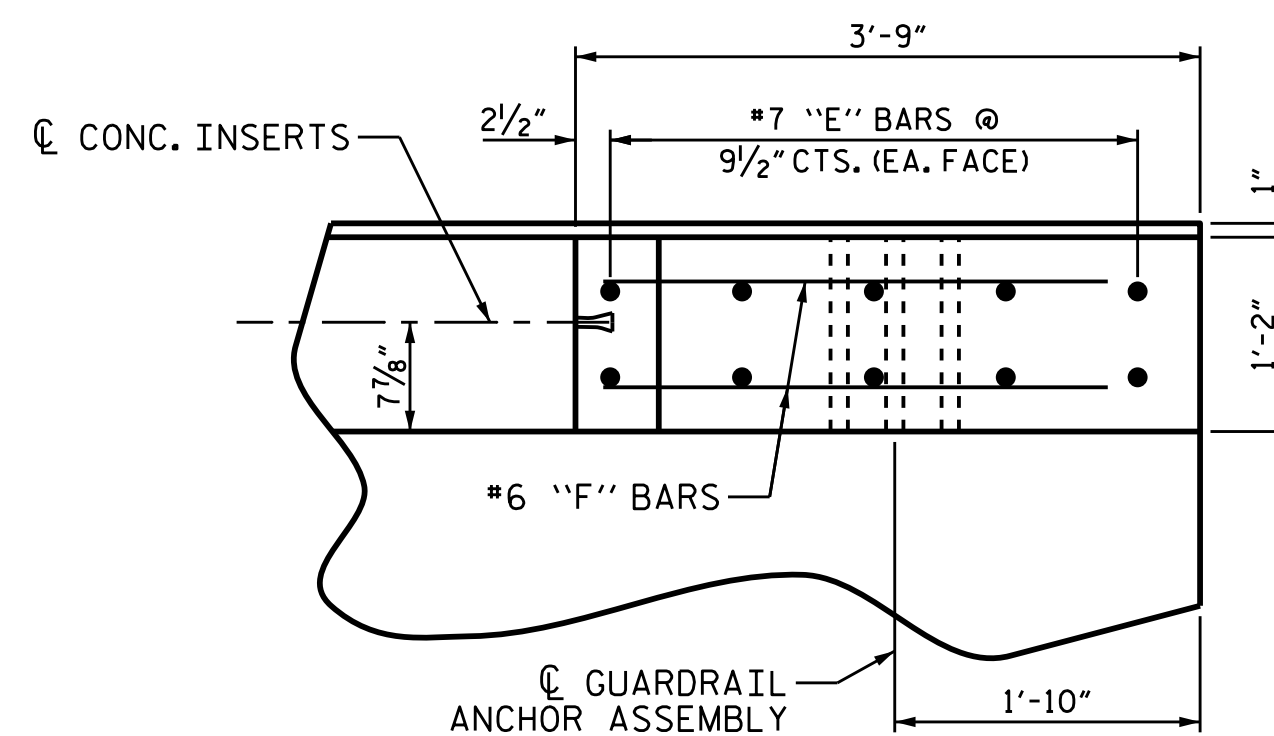


PLAN OF PARAPET



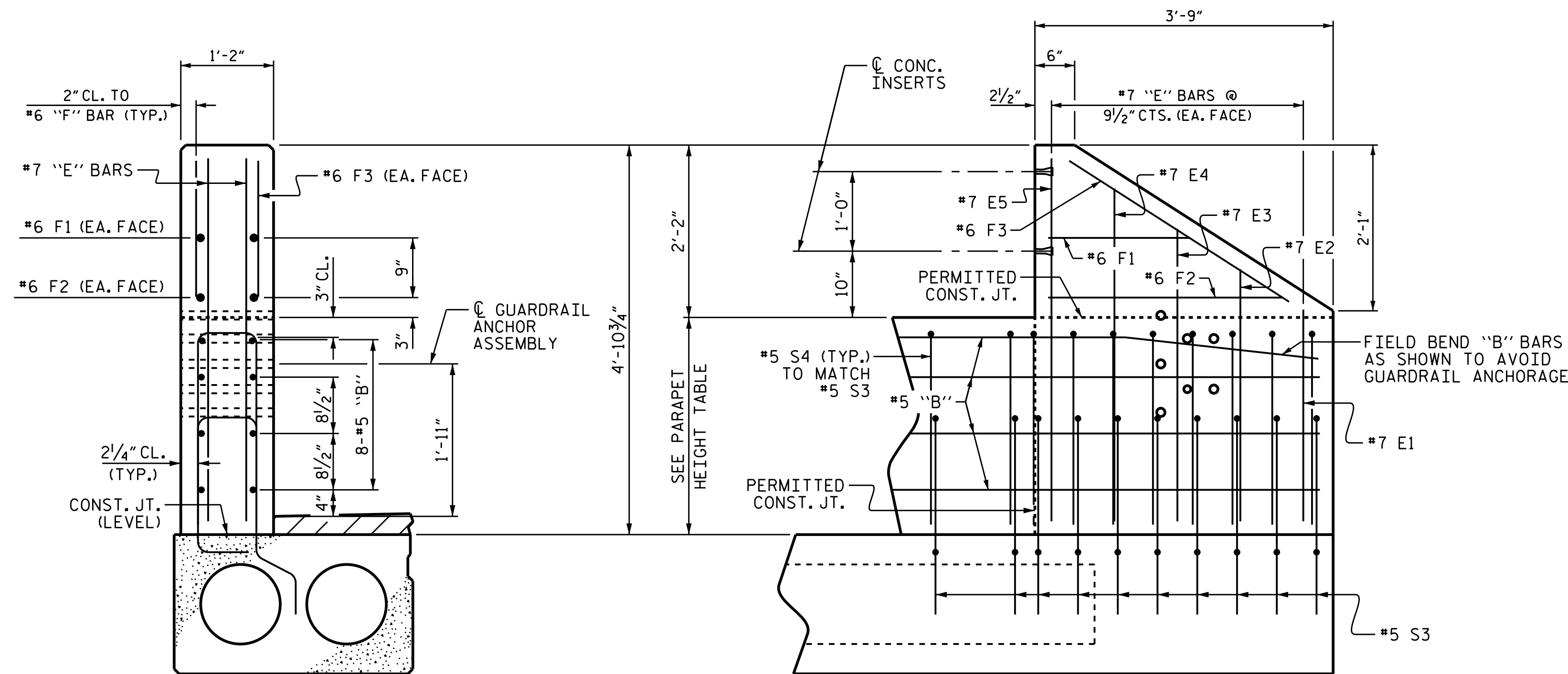
PLAN OF END POST

**NOTES**

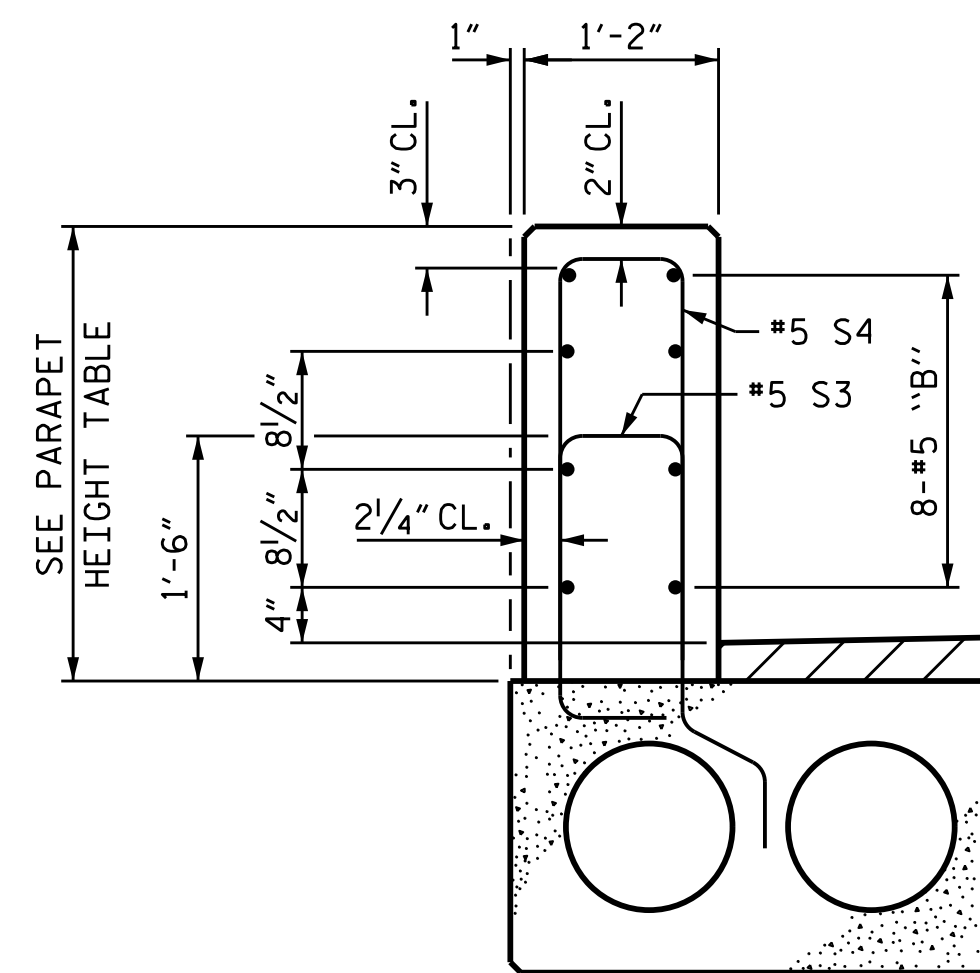
ALL REINFORCING STEEL IN PARAPETS AND END POSTS SHALL BE EPOXY COATED.  
 FOR DETAILS OF CONCRETE INSERTS AND GUARDRAIL ANCHOR ASSEMBLY, SEE "RAIL POST SPACINGS AND END OF RAIL DETAILS" SHEET.  
 #5 S3 BARS ARE INCLUDED IN THE BILL OF MATERIAL FOR CORED SLAB UNITS.  
 GROOVED CONTRACTION JOINTS, 1/2" IN DEPTH, SHALL BE TOOLED IN ALL EXPOSED FACES OF THE PARAPET AND IN ACCORDANCE WITH ARTICLE 825-10(B) OF THE STANDARD SPECIFICATIONS. A CONTRACTION JOINT SHALL BE LOCATED AT EACH THIRD POINT BETWEEN PARAPET EXPANSION JOINTS. ONLY ONE CONTRACTION JOINT IS REQUIRED AT MIDPOINT OF PARAPET SEGMENTS LESS THAN 20 FEET IN LENGTH AND NO CONTRACTION JOINTS ARE REQUIRED FOR THOSE SEGMENTS LESS THAN 10 FEET IN LENGTH.

**PARAPET HEIGHT**

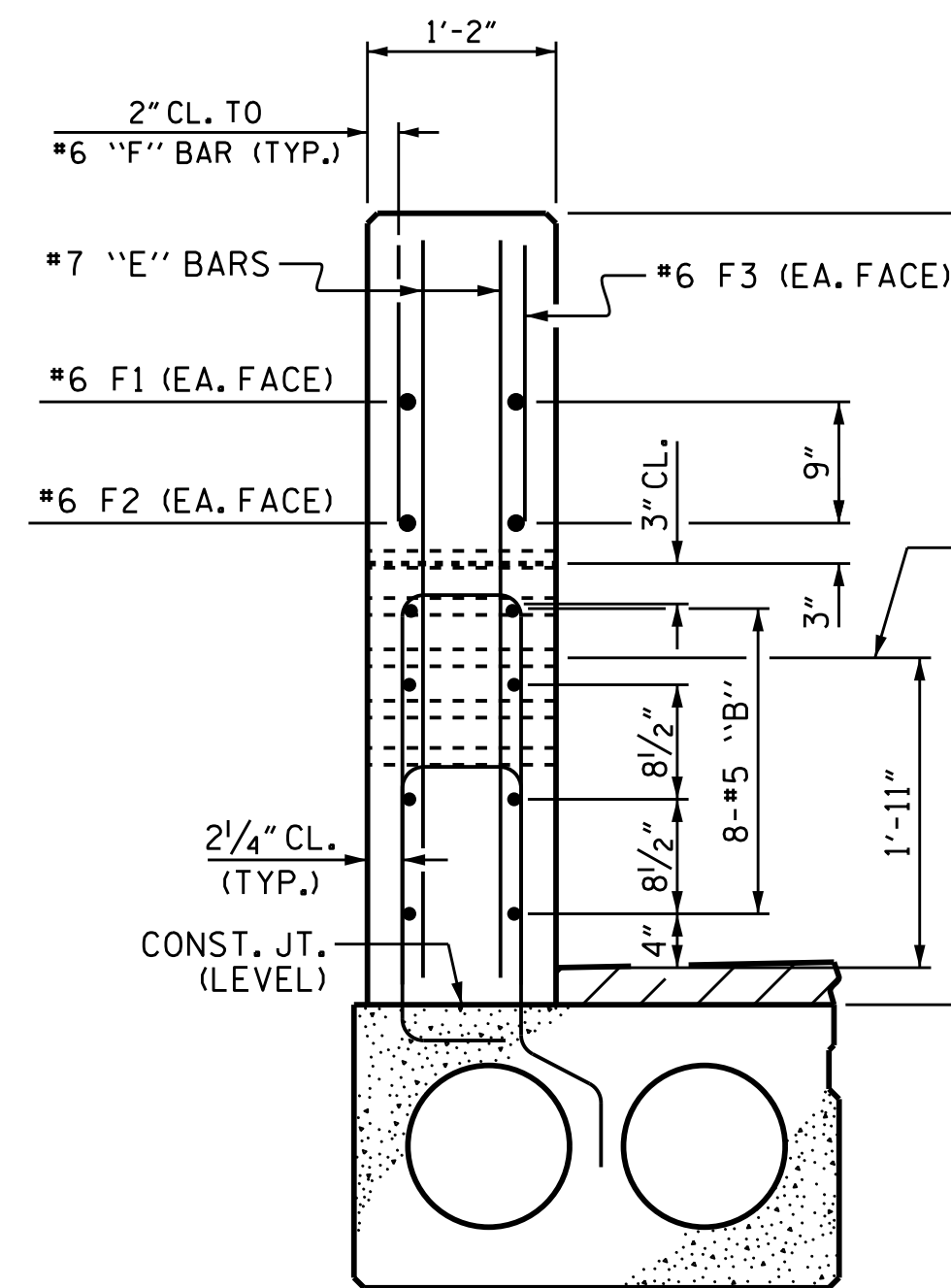
	@ BEARINGS	@ MID-SPAN
25' & 30' UNITS	2'-8 3/4"	2'-8 5/8"
55' UNITS	2'-8 3/4"	2'-7 5/8"



ELEVATION



PARAPET SECTION



END VIEW

**BILL OF MATERIAL**

**FOR 2 PARAPETS & 4 END POSTS**

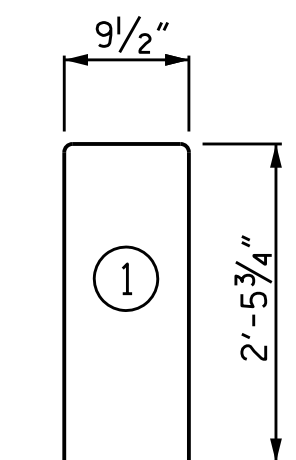
BAR	NO.	SIZE	TYPE	LENGTH	WEIGHT
*B8	16	#5	STR	24'-7"	410
*B9	32	#5	STR	27'-1"	904
*B14	16	#5	STR	29'-7"	494
*E1	8	#7	STR	2'-8"	44
*E2	8	#7	STR	3'-2"	52
*E3	8	#7	STR	3'-8"	60
*E4	8	#7	STR	4'-2"	68
*E5	8	#7	STR	4'-6"	74
*F1	8	#6	STR	1'-9"	21
*F2	8	#6	STR	2'-11"	35
*F3	8	#6	STR	3'-3"	39
*S4	274	#5	1	5'-9"	1643

\* EPOXY COATED REINFORCING STEEL LBS. 3844

CLASS AA CONCRETE CU.YDS. 26.8

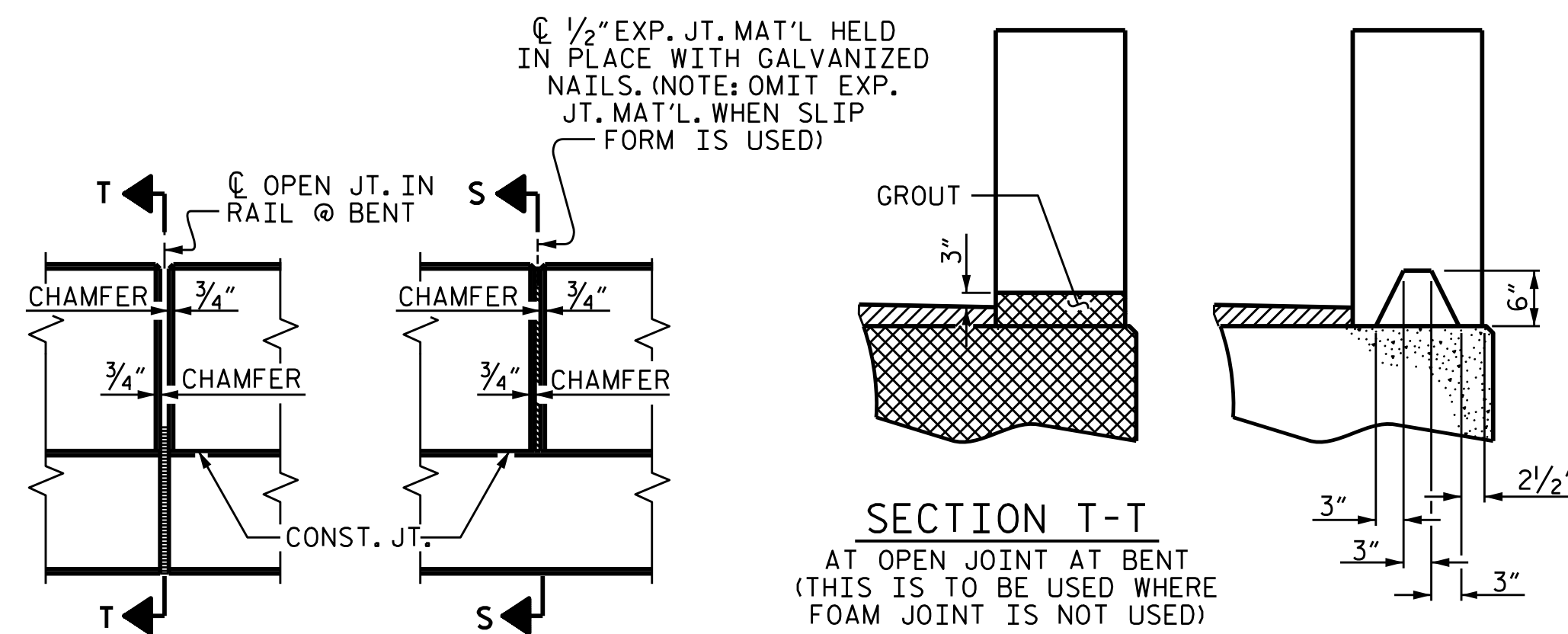
TOTAL LIN. FT. OF CONCRETE PARAPET 220.00

**BAR TYPES**



ALL BAR DIMENSIONS ARE OUT TO OUT

**PARAPET AND END POST FOR TWO BAR METAL RAIL**



ELEVATION AT EXPANSION JOINTS

SECTION T-T AT OPEN JOINT AT BENT (THIS IS TO BE USED WHERE FOAM JOINT IS NOT USED)

SECTION S-S AT DAM IN OPEN JOINT (THIS IS TO BE USED ONLY WHEN SLIP FORM IS USED)

PROJECT NO. B-5304  
PENDER COUNTY  
 STATION: 12+27.00 -L-



STATE OF NORTH CAROLINA  
 DEPARTMENT OF TRANSPORTATION  
 RALEIGH  
 SUPERSTRUCTURE  
 CONCRETE  
 PARAPET AND  
 END POST DETAILS

DRAWN BY : P. K. NEWTON DATE : 8/10/17  
 CHECKED BY : J. D. HAWK DATE : 8/11/17  
 DESIGN ENGINEER OF RECORD : P. K. NEWTON DATE : 8/14/17

DOCUMENT NOT CONSIDERED FINAL UNLESS ALL SIGNATURES COMPLETED

REVISIONS						SHEET NO.
NO.	BY:	DATE:	NO.	BY:	DATE:	S-12
1			3			TOTAL SHEETS 25
2			4			