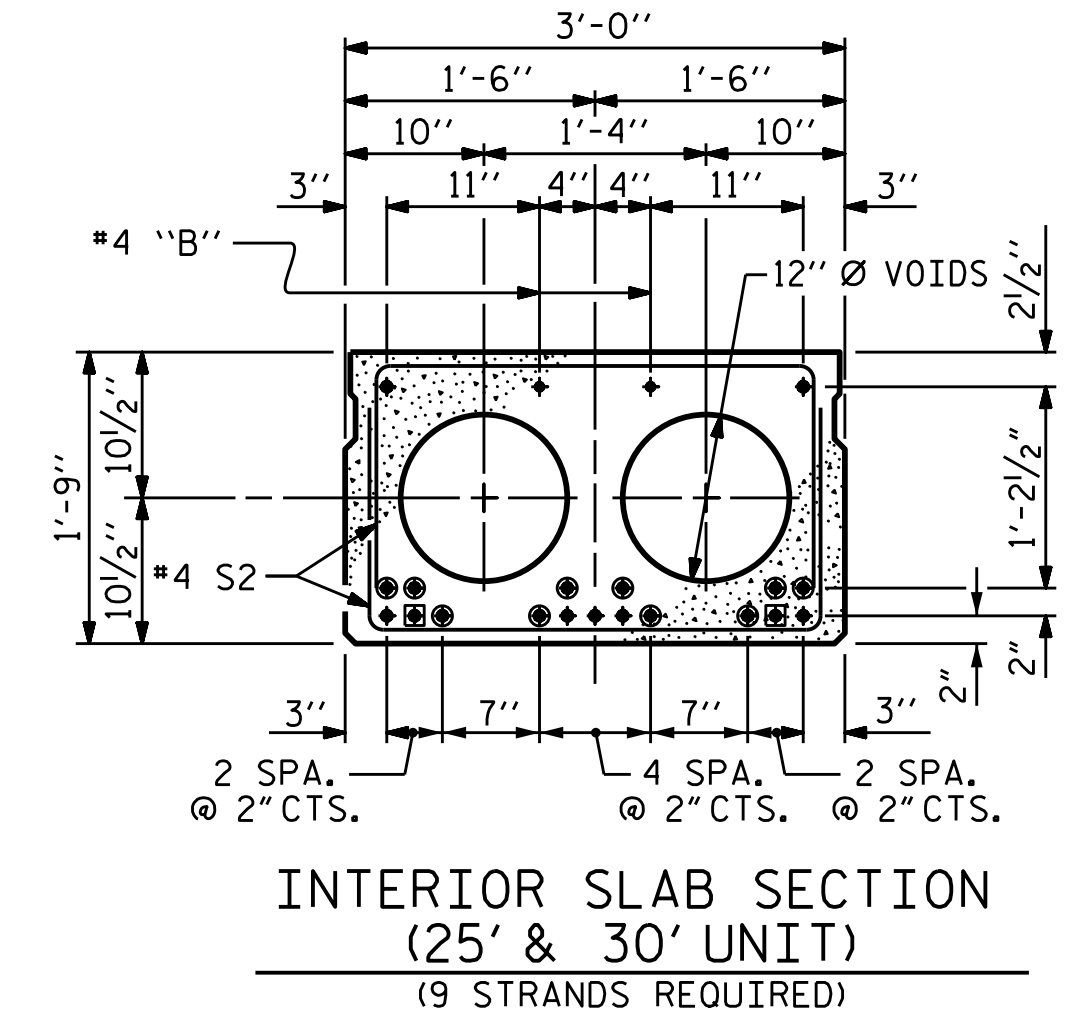
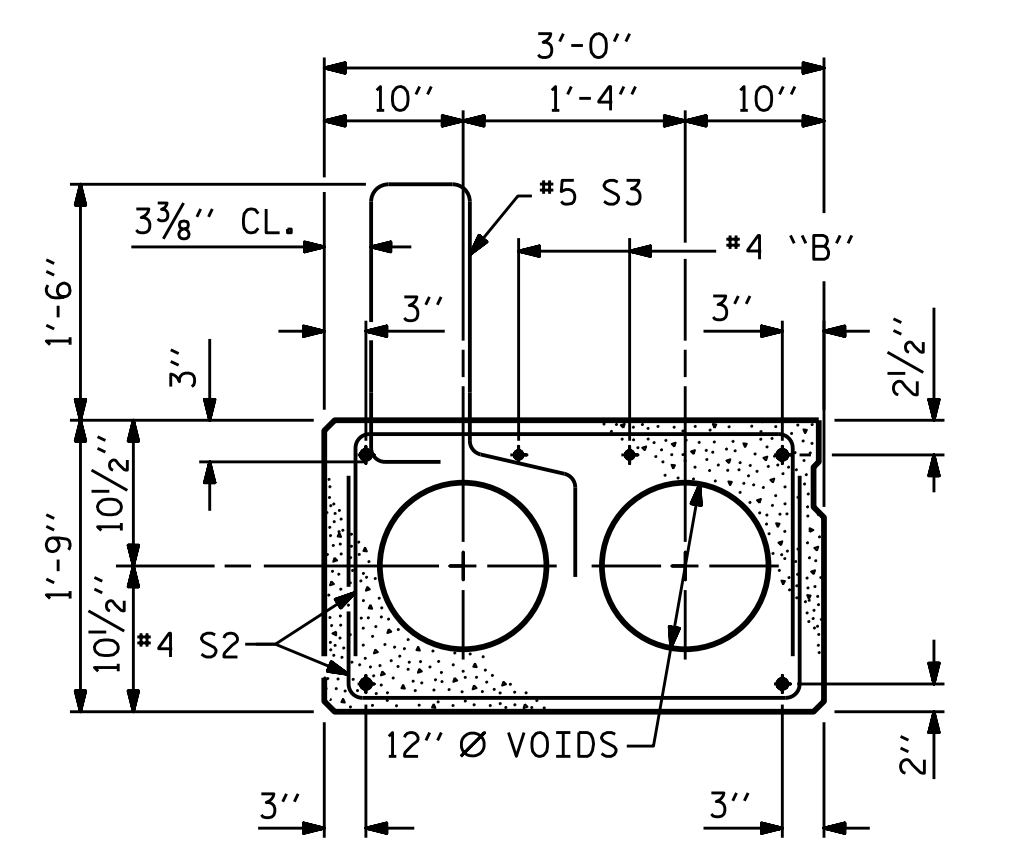


HALF SECTION AT INTERMEDIATE DIAPHRAGMS  
 HALF SECTION THROUGH VOIDS  
**TYPICAL SECTION**

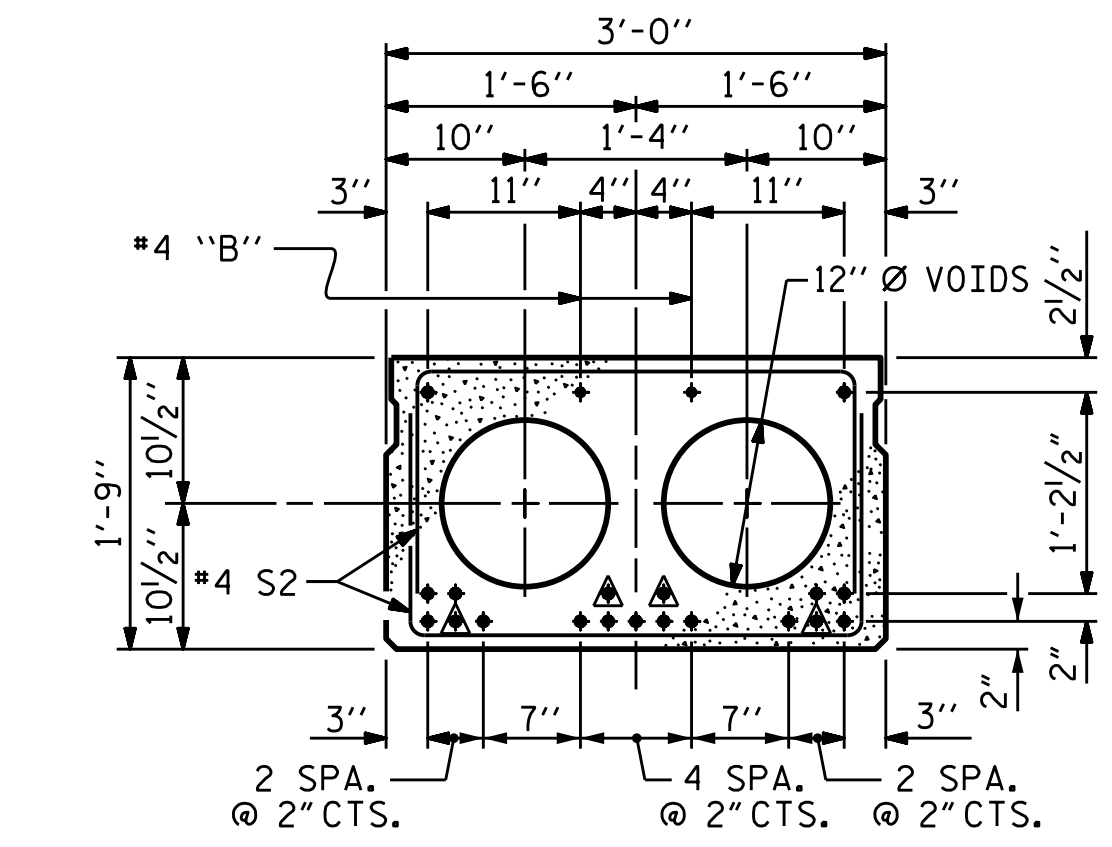
\* - THE MAXIMUM PARAPET HEIGHT AND ASPHALT THICKNESS IS SHOWN. THE HEIGHT OF THE PARAPET AND ASPHALT THICKNESS VARIES WHILE THE TOP OF THE PARAPET FOLLOWS THE PROFILE OF THE GUTTERLINE. FOR PARAPET HEIGHT DETAILS AND ASPHALT THICKNESS, SEE THE "GUTTERLINE ASPHALT THICKNESS" TABLE ON SHEET S-11 AND THE "PARAPET HEIGHT" TABLE ON SHEET S-12.



**INTERIOR SLAB SECTION (25' & 30' UNIT)**  
 (9 STRANDS REQUIRED)

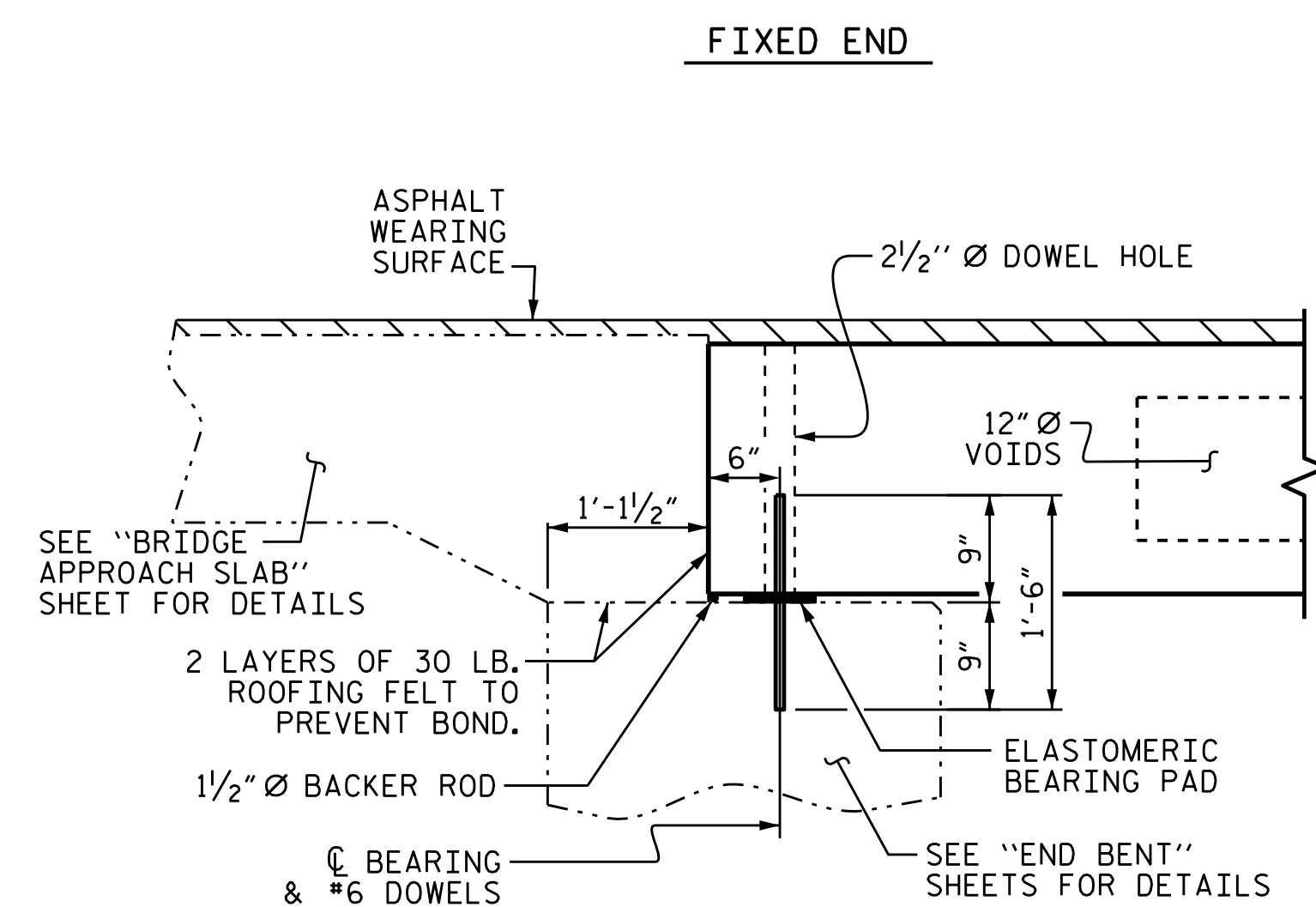


**EXT. SLAB SECTION**  
 (FOR PRESTRESSED STRAND LAYOUT, SEE INTERIOR SLAB SECTION.)

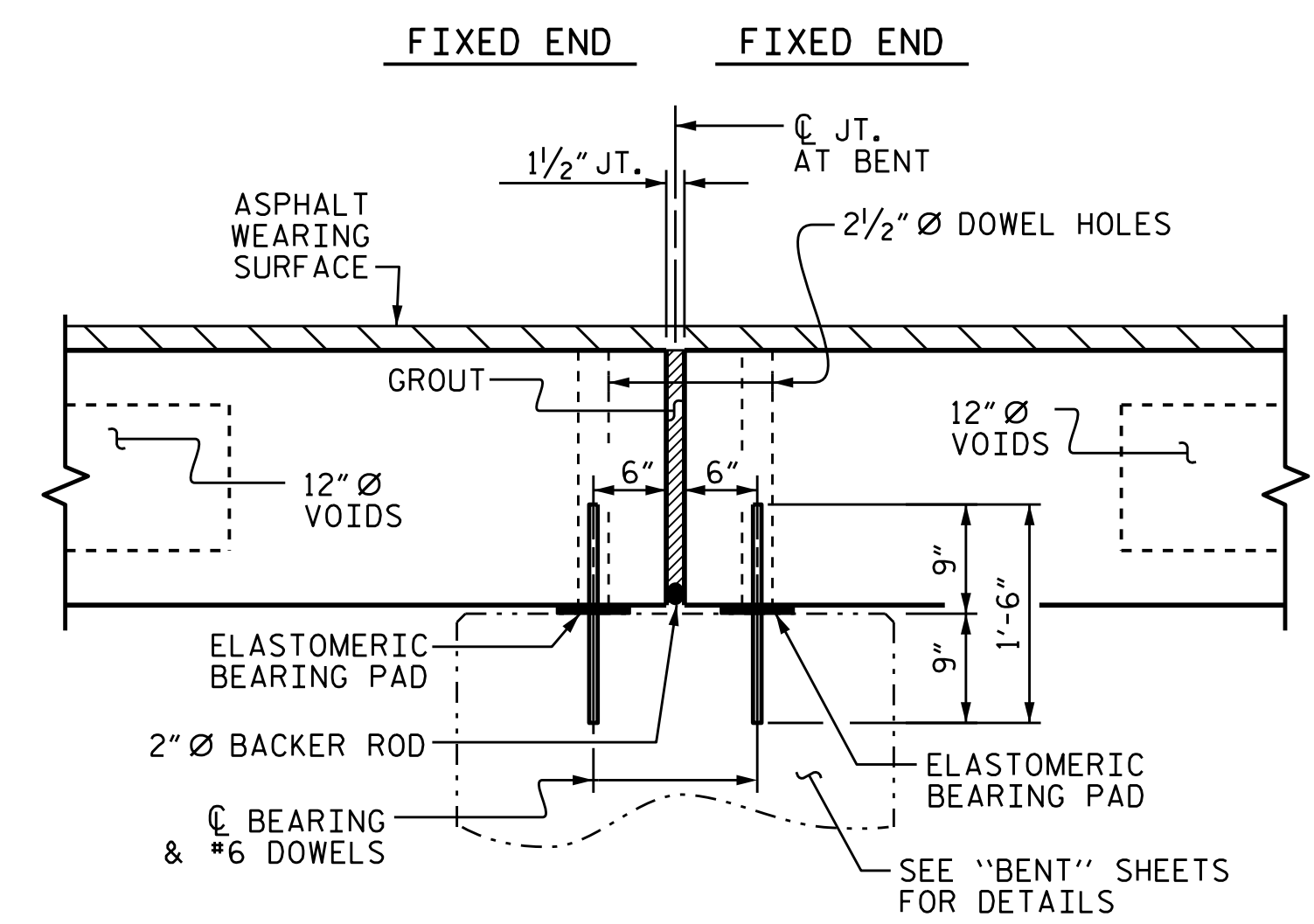


**INTERIOR SLAB SECTION (55' UNIT)**  
 (19 STRANDS REQUIRED)

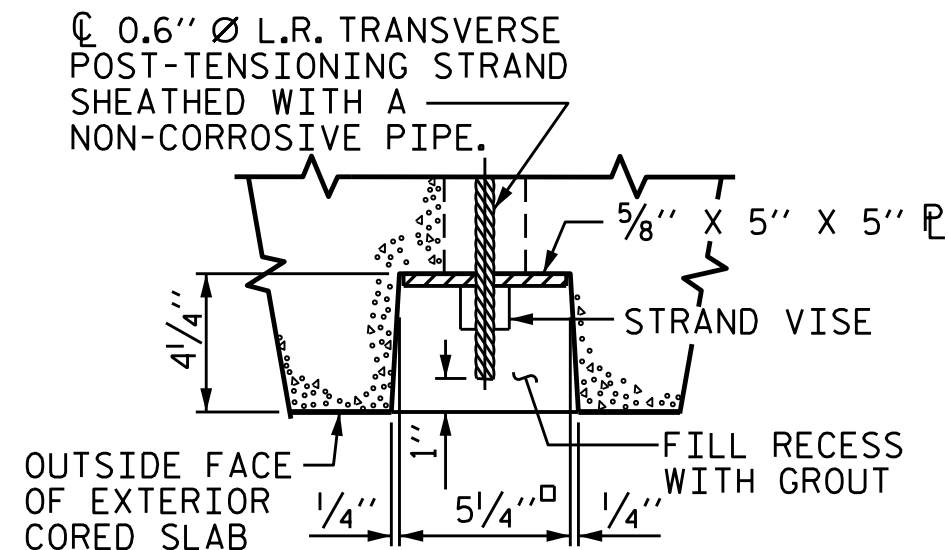
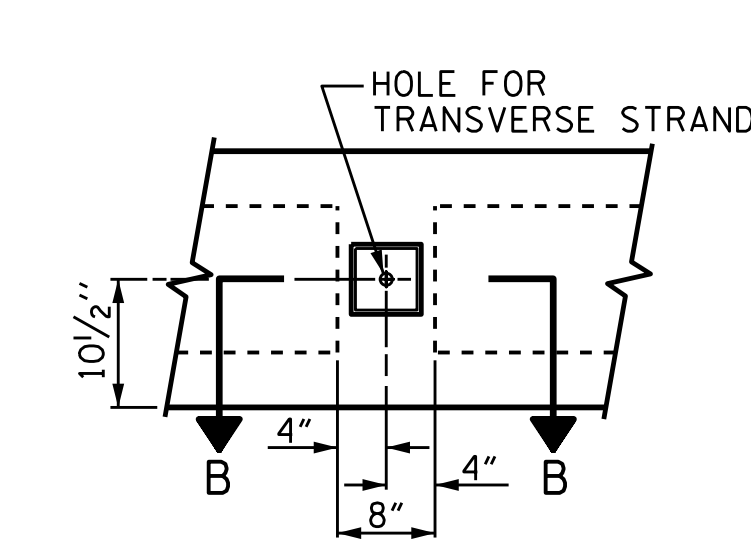
- DEBONDING LEGEND**
- ▲ BOND SHALL BE BROKEN ON THESE STRANDS FOR A DISTANCE OF 6'-0" FROM END OF CORED SLAB UNIT. SEE STANDARD SPECIFICATIONS, ARTICLE 1078-7.
  - BOND SHALL BE BROKEN ON THESE STRANDS FOR A DISTANCE OF 2'-0" FROM END OF CORED SLAB UNIT. SEE STANDARD SPECIFICATIONS, ARTICLE 1078-7.
  - OPTIONAL FULL LENGTH DEBONDED STRANDS. THESE STRANDS ARE NOT REQUIRED. IF THE FABRICATOR CHOOSES TO INCLUDE THESE STRANDS IN THE CORED SLAB UNIT, THE STRANDS SHALL BE DEBONDED FOR THE FULL LENGTH OF THE UNIT AT NO ADDITIONAL COST. SEE STANDARD SPECIFICATIONS, ARTICLE 1078-7.



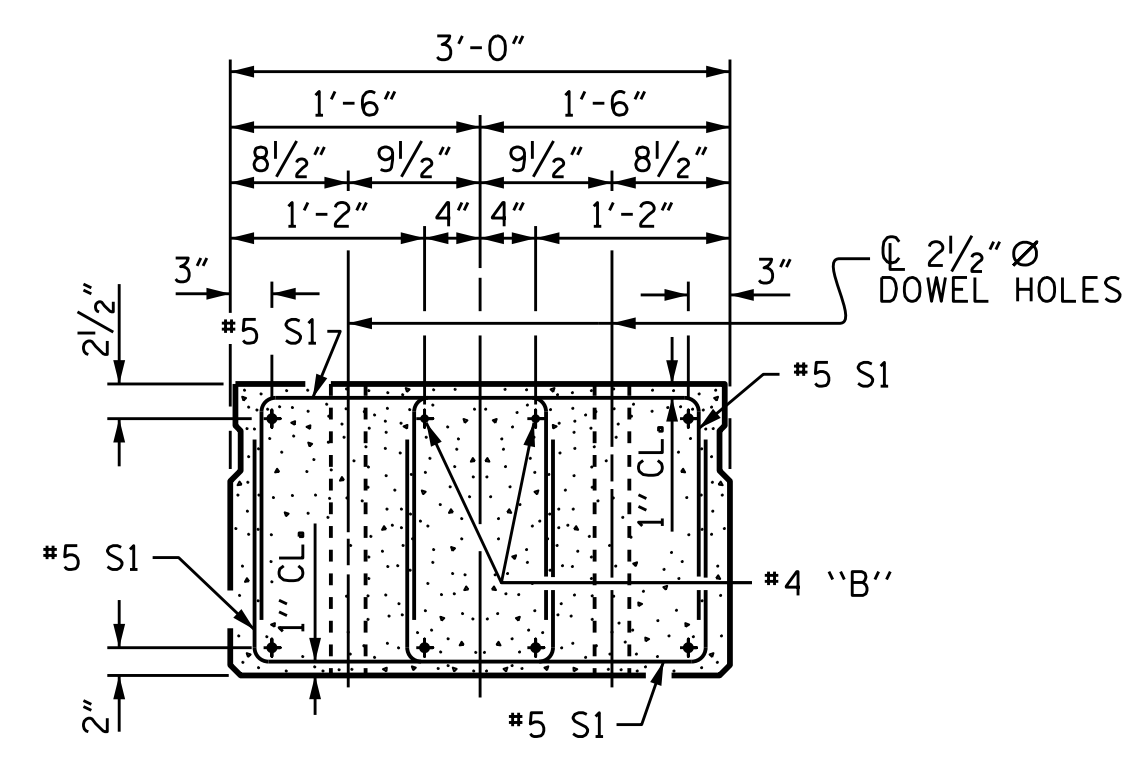
**SECTION AT END BENT**



**SECTION AT BENT**

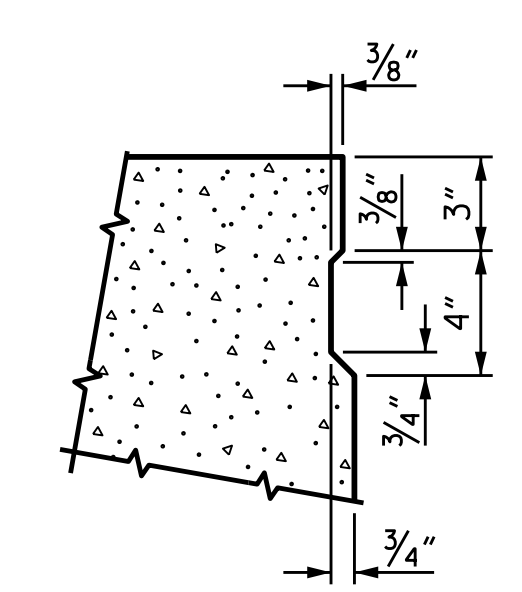


**ELEVATION VIEW**  
**SECTION B-B**  
**GROUTED RECESS AT END OF POST-TENSIONED STRAND OF CORED SLABS**

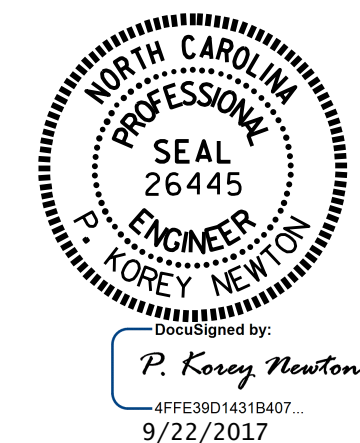


**END ELEVATION**

SHOWING PLACEMENT OF DOUBLE STIRRUPS AND LOCATION OF DOWEL HOLES. (STRAND LAYOUT NOT SHOWN). INTERIOR SLAB UNIT SHOWN-EXTERIOR SLAB UNIT SIMILAR EXCEPT SHEAR KEY LOCATION.



**SHEAR KEY DETAIL**  
 NOTE: OMIT SHEAR KEY ON OUTSIDE FACE OF EXTERIOR CORED SLABS.



PROJECT NO. B-5304  
PENDER COUNTY  
 STATION: 12+27.00 -L-

SHEET 1 OF 5  
 STATE OF NORTH CAROLINA  
 DEPARTMENT OF TRANSPORTATION  
 RALEIGH  
 STANDARD  
 3'-0" X 1'-9"  
 PRESTRESSED CONCRETE  
 CORED SLAB UNIT  
 90° SKEW

REVISIONS						SHEET NO.
NO.	BY:	DATE:	NO.	BY:	DATE:	S-7
1			3			TOTAL SHEETS
2			4			25

ASSEMBLED BY : G. KOUCHEKI	DATE : 9/30/16
CHECKED BY : J. D. HAWK	DATE : 8/10/17
DRAWN BY : DGE 5/09	REV. 8/14
CHECKED BY : BCH 6/09	MAA/TMG