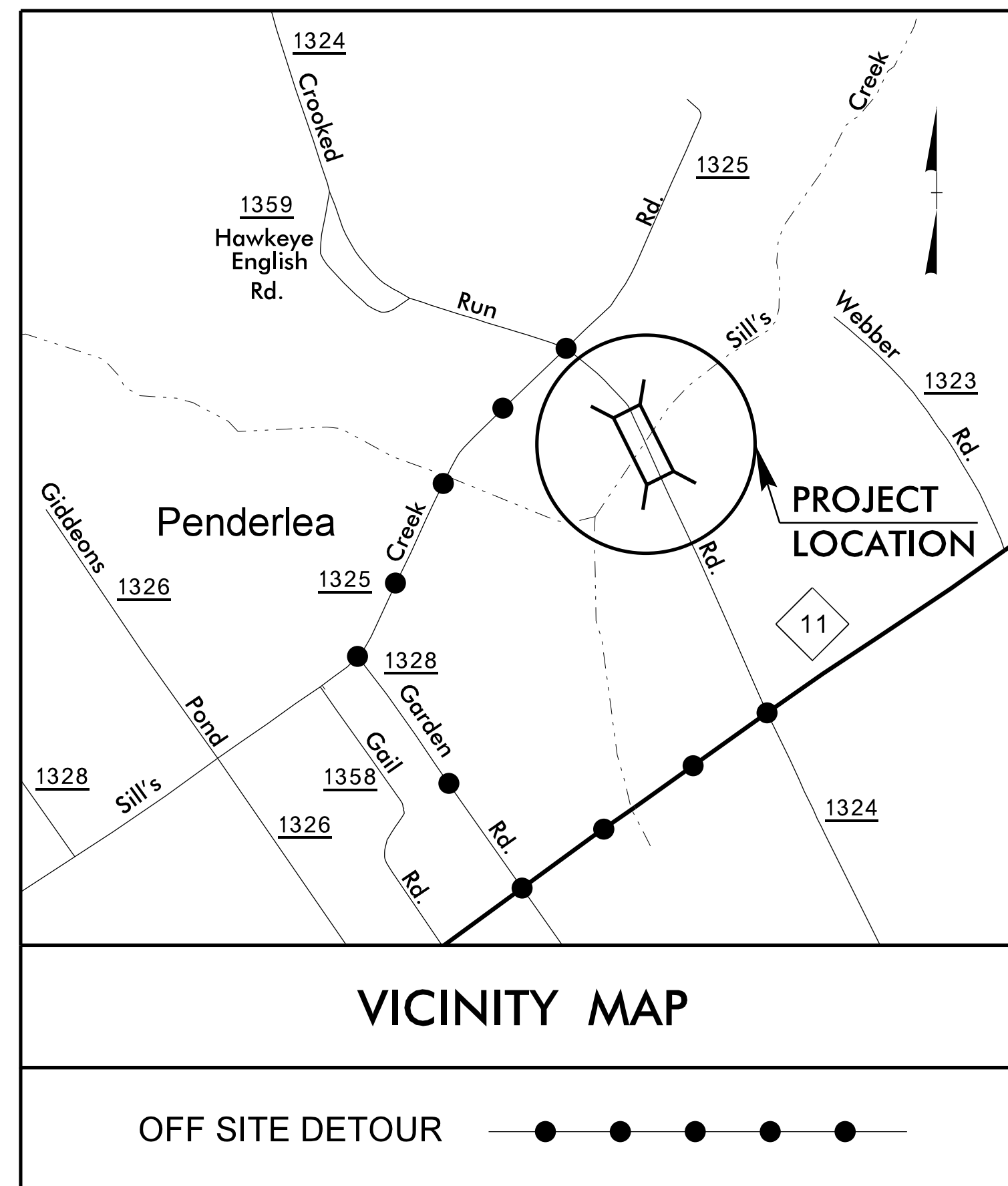
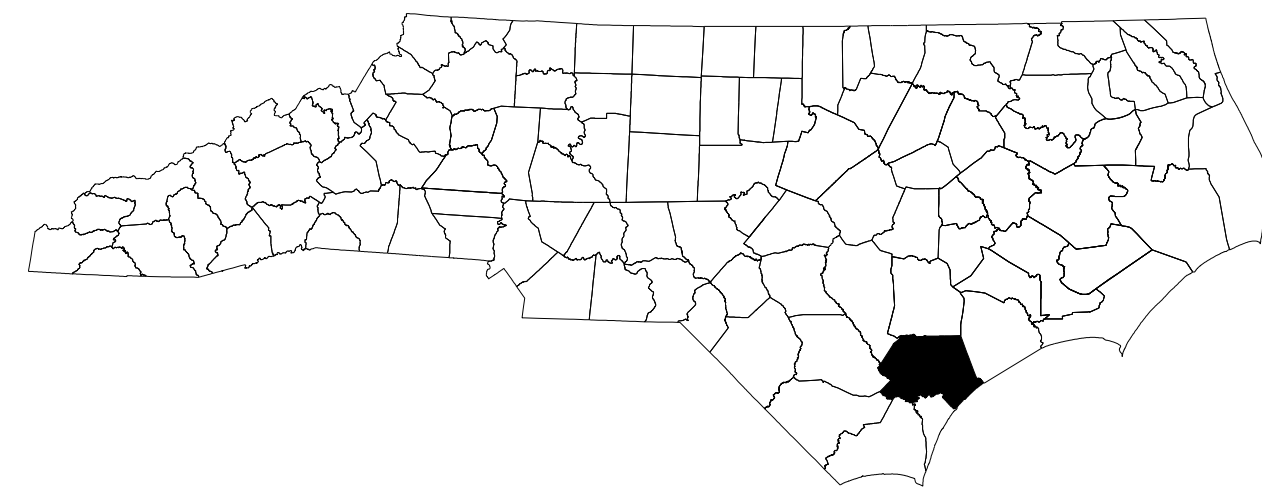


STATE OF NORTH CAROLINA  
DIVISION OF HIGHWAYS

**TRANSPORTATION MANAGEMENT PLAN**

**PENDER COUNTY**



**LOCATION: REPLACE BRIDGE NO. 203 OVER SILL'S CREEK ON SR 1324**

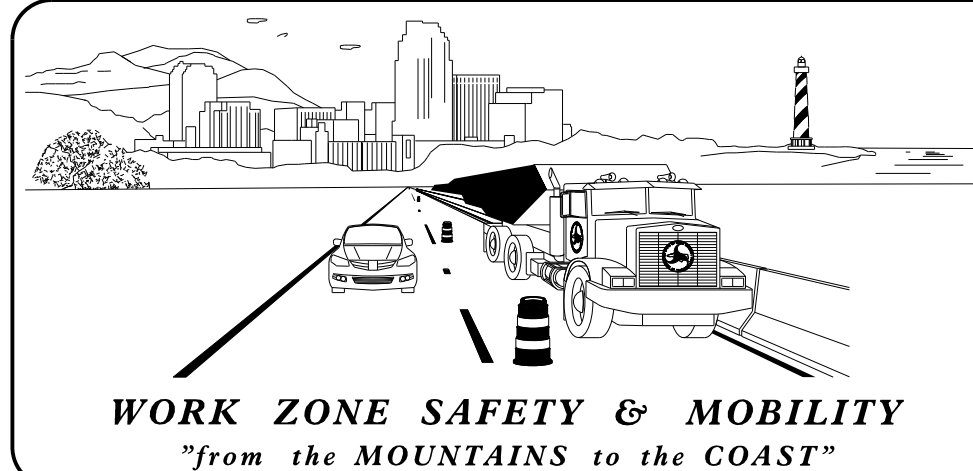
**ATKINS** 1616 EAST MILLBROOK ROAD, SUITE 160  
RALEIGH, NORTH CAROLINA 27609  
(919) 876-6888 NCBEE# #F-0326

**INDEX OF SHEETS**

SHEET NO.	TITLE
TMP-1	TITLE SHEET, VICINITY MAP, AND INDEX OF SHEETS
TMP-1A	LIST OF APPLICABLE ROADWAY STANDARD DRAWINGS, LEGEND, GENERAL NOTES, AND PHASING
TMP-2	SPECIAL SIGN DESIGN
TMP-3	TEMPORARY TRAFFIC CONTROL - OFF-SITE DETOUR AND DETOUR SIGNS

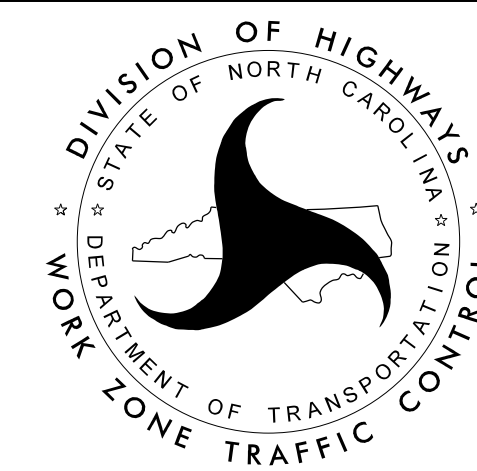
SHEET NO.  
TMP-1

13-JUL-2017 16:06 G:\Transportation\Traffic\Curr\NCDOT 10 Bridges TMP\00053589 - B-5304 TMP Bridge Replace 589\TrafficControl\TCP\B-5304 TCP 01.dgn WLE2054 AT DUS300019



**N.C.D.O.T. WORK ZONE TRAFFIC CONTROL**  
1561 MAIL SERVICE CENTER (MSC) RALEIGH, NC 27699-1561  
750 N. GREENFIELD PARKWAY, GARNER, NC 27529 (DELIVERY)  
PHONE: (919) 773-2800 FAX: (919) 771-2745

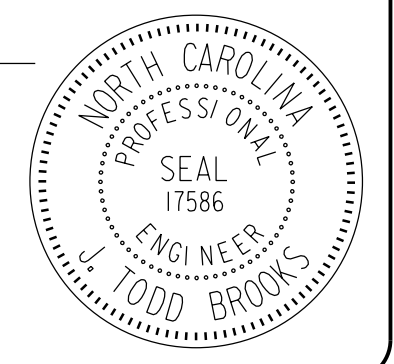
DR. J. HUMMER, P.E. STATE TRAFFIC MANAGEMENT ENGINEER  
J. STEVE KITE, P.E. TRAFFIC CONTROL PROJECT ENGINEER  
MATT SPRINGER, P.E. TRAFFIC CONTROL PROJECT DESIGN ENGINEER  
TRAFFIC CONTROL DESIGN ENGINEER



**DOCUMENT NOT CONSIDERED FINAL  
UNLESS ALL SIGNATURES COMPLETED**

APPROVED \_\_\_\_\_  
DATE: 7/13/2017

SEAL



**TIP PROJECT: B-5304**