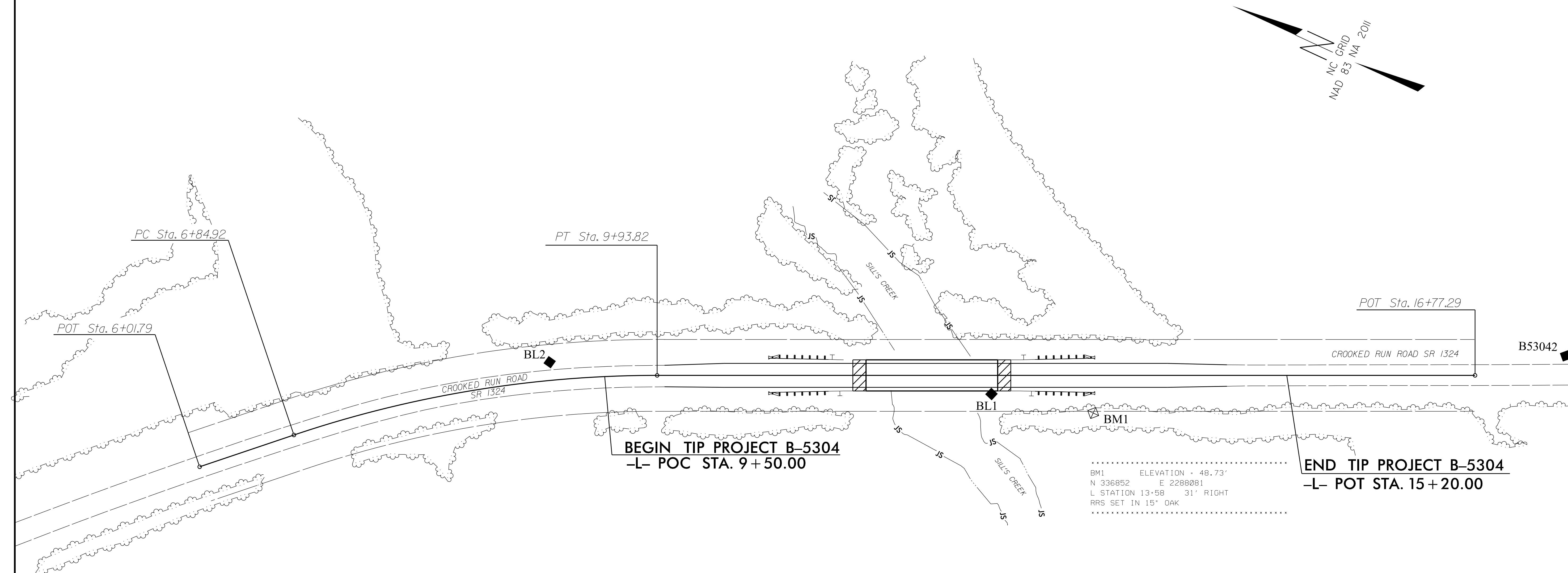


SURVEY CONTROL SHEET B-5304

6/22/09



.....
 BM1 ELEVATION + 48.73'
 N 336852 E 2288081
 L STATION 13+58 31' RIGHT
 RRS SET IN 15" OAK

BL POINT	DESC.	NORTH	EAST	ELEVATION	L STATION	OFFSET
BL2	TRV. CAP & REBA	337281.8760	2287929.7520	46.68	9+05.35	15.18 LT
BL1	TRV. CAP & REBA	336935.5000	2288060.2120	48.16	12+73.24	15.59 RT
B53042	GPS CAP & REBAR	335662.5170	2288688.6520	63.90	OUTSIDE PROJECT LIMITS	
B53041	GPS CAP & REBAR	334728.8550	2289121.1710	65.43	OUTSIDE PROJECT LIMITS	

DATUM DESCRIPTION

THE LOCALIZED COORDINATE SYSTEM DEVELOPED FOR THIS PROJECT IS BASED ON THE STATE PLANE COORDINATES ESTABLISHED BY NCDOT FOR MONUMENT "B5304-2" WITH NAD 83/NA 2011 STATE PLANE GRID COORDINATES OF NORTHING: 335,662.517(ft) EASTING: 2,288,688.652(ft) ELEVATION: 63.90'(ft)

THE AVERAGE COMBINED GRID FACTOR USED ON THIS PROJECT (GROUND TO GRID) IS: 0.999926375

THE N.C. LAMBERT GRID BEARING AND LOCALIZED HORIZONTAL GROUND DISTANCE FROM "B5304-2" TO -L- STATION 9+50.00 IS
 N 25° 30' 50.42" W 1742.55'

ALL LINEAR DIMENSIONS ARE LOCALIZED HORIZONTAL DISTANCES
 VERTICAL DATUM USED IS NAVD 88

NOTE: DRAWING NOT TO SCALE

6/23/2017 8:53:04 LS_1c-1_160727.dgn