

09/28/2017

See Sheet 1A For Index of Sheets
See Sheet 1B for Conventional Symbols
See Sheet 1C for Survey Control Sheet

STATE OF NORTH CAROLINA
DIVISION OF HIGHWAYS

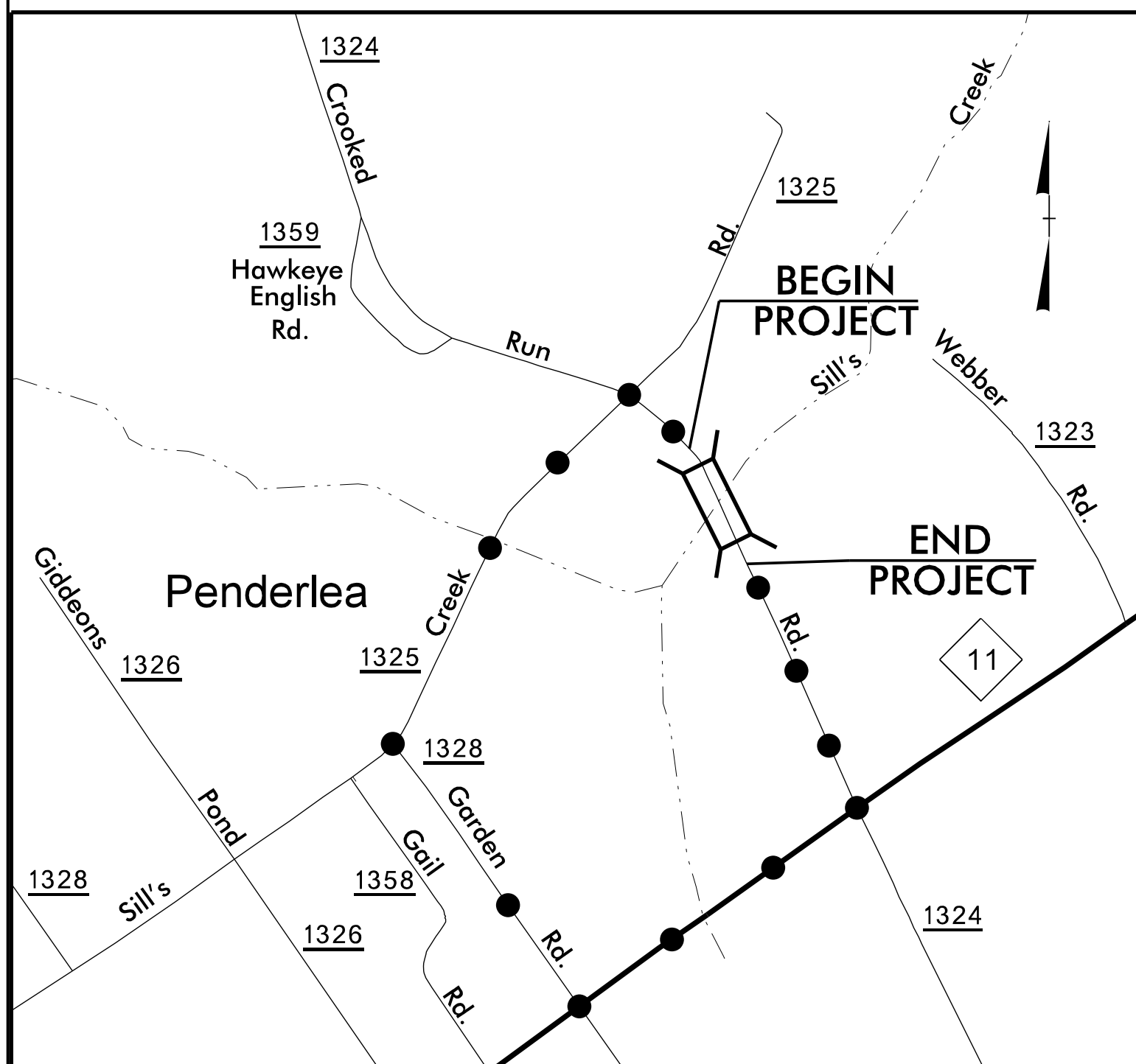
PENDER COUNTY

LOCATION: REPLACE BRIDGE NO. 203 OVER SILL'S CREEK ON SR 1324 (CROOKED RUN ROAD)

TYPE OF WORK: GRADING, DRAINAGE, PAVING AND STRUCTURE

STATE	STATE PROJECT REFERENCE NO.	SHEET NO.	TOTAL SHEETS
N.C.	B-5304	1	
STATE PROJ. NO.	F.A. PROJ. NO.	DESCRIPTION	
46018.1.1	BRZ-1324(7)	PE	
46018.2.1		R/W	
46018.3.1		CONST	

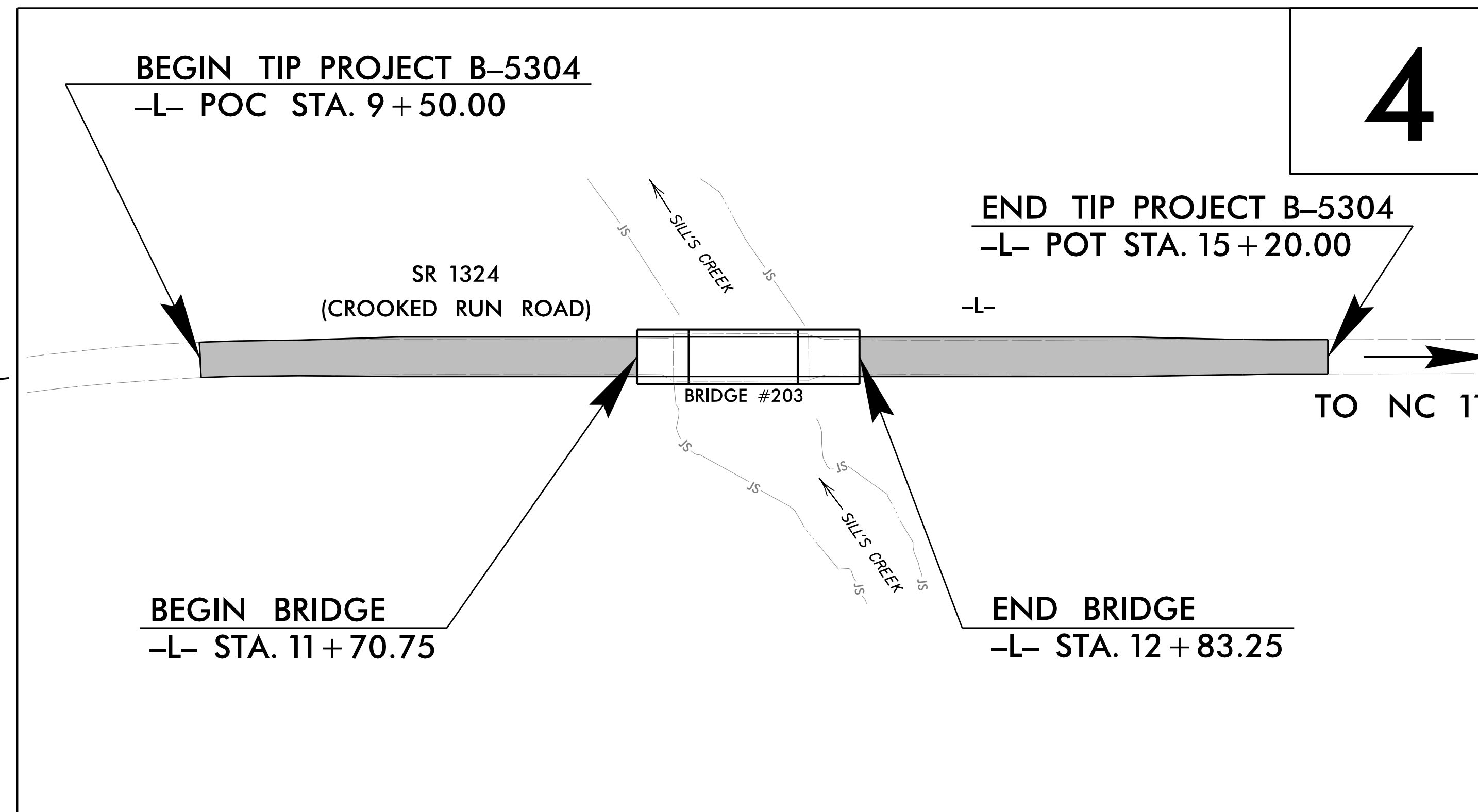
TIP PROJECT: B-5304



VICINITY MAP

OFF SITE DETOUR

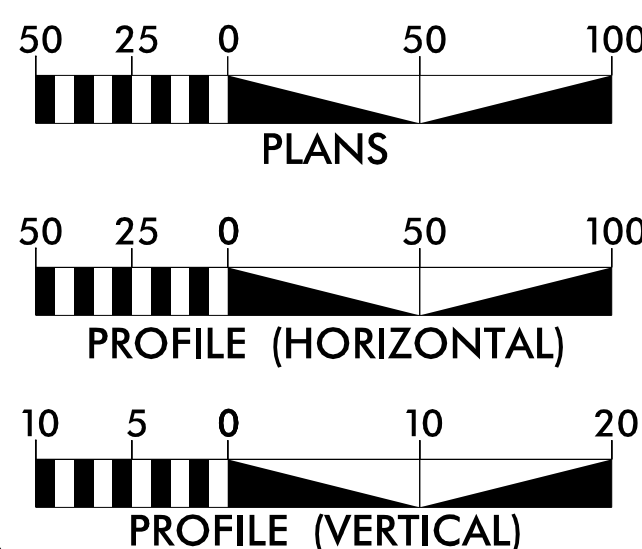
TO SILL'S CREEK RD.



DOCUMENT NOT CONSIDERED FINAL UNLESS ALL SIGNATURES COMPLETED

CONTRACT: C203983

GRAPHIC SCALES



DESIGN DATA

ADT 2017 = 437
ADT 2037 = 619
K = 10 %
D = 60 %
T = 4 % *
V = 60 MPH
* TTST = 1 % DUAL 3 %
FUNC CLASS = LOCAL RURAL SUB-REGIONAL TIER

PROJECT LENGTH

LENGTH ROADWAY TIP PROJECT B-5304 = 0.087 MILES
LENGTH STRUCTURE TIP PROJECT B-5304 = 0.021 MILES
TOTAL LENGTH TIP PROJECT B-5304 = 0.108 MILES

Prepared in the Office of:

LOCHNER
H. W. LOCHNER, INC.
2840 PLAZA PLACE, SUITE 202
RALEIGH, NC 27612
(919)571-7111

WSP
WSP USA
1001 WOREHEAD SQUARE DRIVE
SUITE 600
CHARLOTTE, NC 28203
TEL: 1.704.342.5401
LICENSE NO. E-0165

2012 STANDARD SPECIFICATIONS
RIGHT OF WAY DATE:
NOVEMBER 18, 2016

LETTING DATE:
NOVEMBER 21, 2017

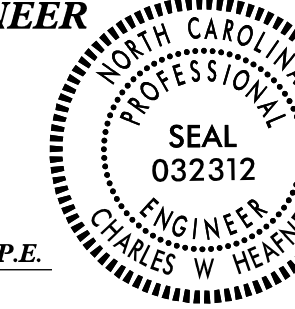
BRIAN K. EASON, PE
PROJECT ENGINEER

CHRISTINA L. YOKELEY, EI
PROJECT DESIGN ENGINEER

GARY LOVERING, PE
NCDOT CONTACT

HYDRAULICS ENGINEER

DocuSigned by:
Charles Heafner
SIGNATURE: 9/25/2017



ROADWAY DESIGN ENGINEER

DocuSigned by:
Brian K. Eason
SIGNATURE: 9/25/2017

