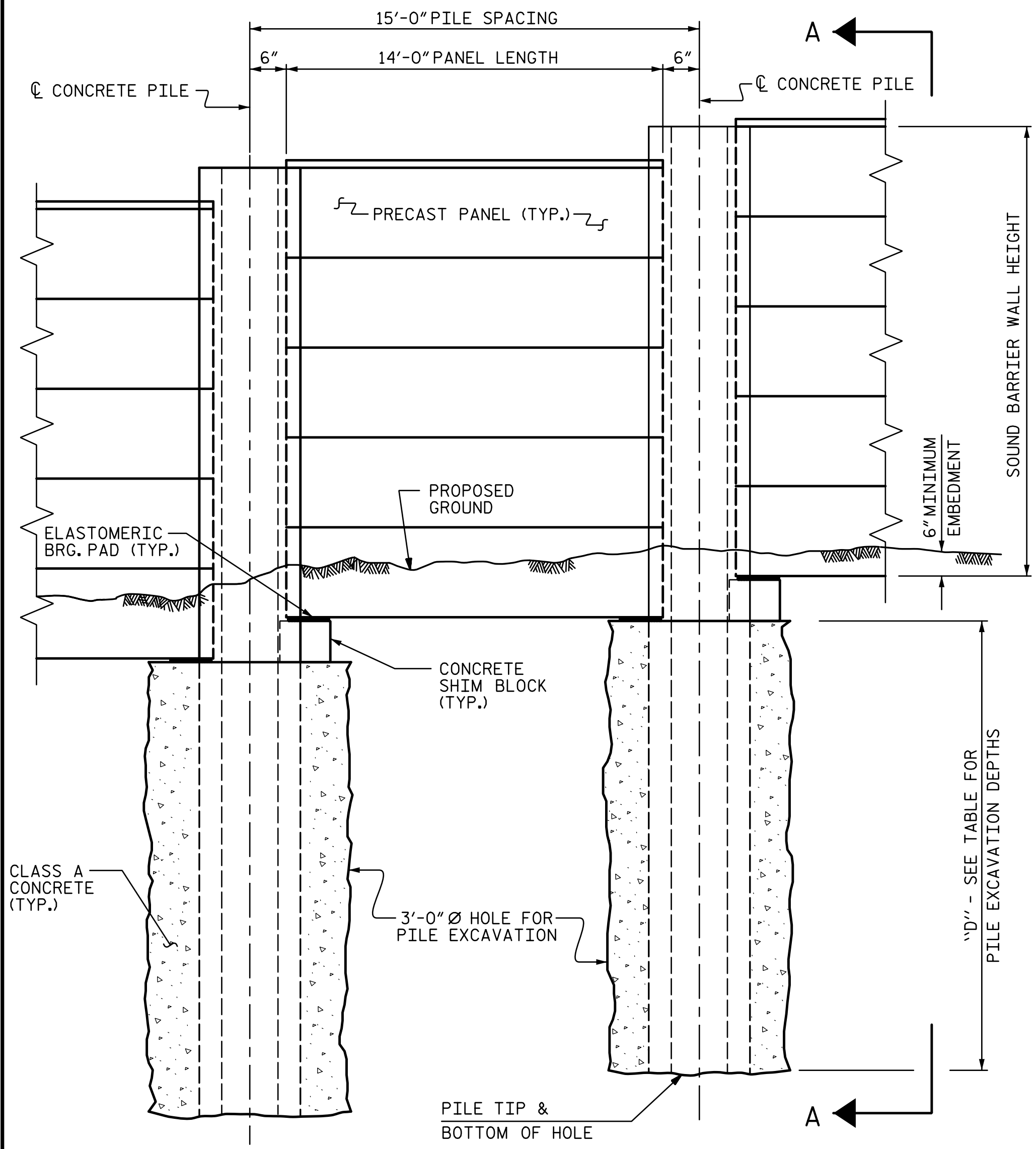
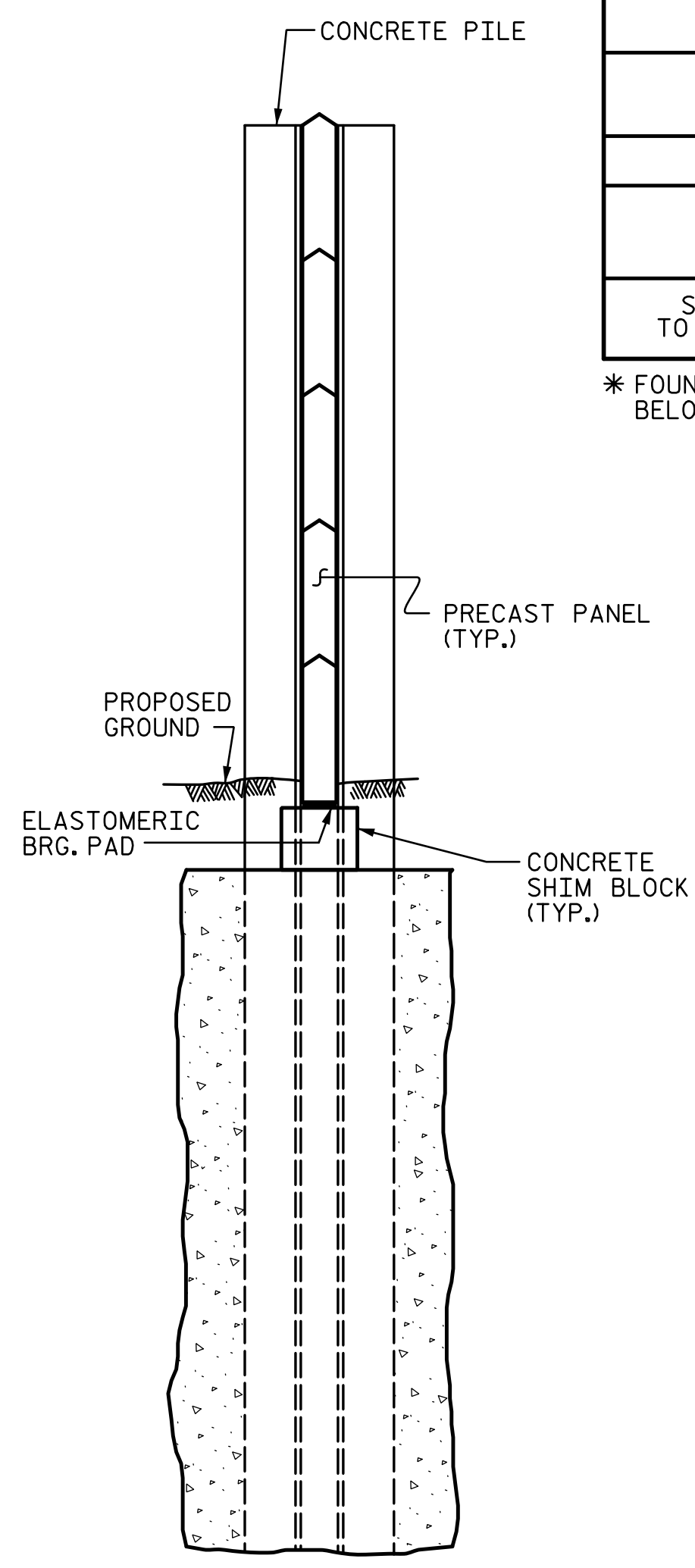


R:\No\seawalls\NW 9\420\_001\_U4751\_SML\_NW\_001\_640009.dgn 10/10/2017 3:39:25 PM ch1kmb



**ELEVATION**

(CONCRETE BARRIER IN FRONT OF SOUND BARRIER WALL NOT SHOWN FOR CLARITY, SEE ROADWAY PLANS)



**SECTION A-A**

(CONCRETE BARRIER IN FRONT OF SOUND BARRIER WALL NOT SHOWN FOR CLARITY, SEE ROADWAY PLANS)

PILE EXCAVATION DEPTHS "D"			
3'-0" Ø HOLE			
WALL -NW9- (STA. 10+00 TO 13+90 -NW9-)			
STATION	MAX WALL HEIGHT	PILE SPACING	SHAFT * DEPTH
STA. 93+91.15 -L- TO STA. 97+81.15 -L-	15'-0"	15'-0"	15'-0"

\* FOUNDATION EXCAVATION DEPTHS ARE MEASURED FROM 1 FOOT BELOW THE FINISHED GRADE.

**NOTES:**

- FOR SOUND BARRIER WALL, SEE SPECIAL PROVISIONS.
- CONSTRUCT SOUND BARRIER WALL TO LINES AND GRADES SHOWN ON THE ROADWAY PLANS.
- PROVIDE PANELS WITH A FLAT BOTTOM.
- VERIFY THE LOCATION OF UNDERGROUND UTILITIES BEFORE DRILLING HOLES TO ENSURE SUFFICIENT CLEARANCE IS AVAILABLE.
- ADJUST PILE EXCAVATION ELEVATIONS TO MAINTAIN 6" MINIMUM EMBEDMENT OF THE BOTTOM PANEL.
- USE CLASS AA FOR PANELS AND CLASS A CONCRETE PILE EXCAVATION BACKFILL, IN ACCORDANCE WITH ARTICLE 1000-4 OF THE STANDARD SPECIFICATIONS.
- FOR SOUND BARRIER WALL STATIONS, OFFSETS, AND WALL ENVELOPE, SEE ROADWAY PLANS.
- PLACE 1" Ø BACKER RODS FULL HEIGHT ON EACH SIDE OF THE PRECAST PANELS. SET AND SEAL THE BACKER ROD IN PLACE WITH SEALANT THAT CONFORMS WITH ARTICLE 1028-3 OF THE STANDARD SPECIFICATIONS.
- FOR SUBMITTAL OF WORKING DRAWINGS, SEE SPECIAL PROVISIONS.
- FOR FALSEWORK AND FORMWORK, SEE SPECIAL PROVISIONS.
- FOR ELASTOMERIC BEARING DETAILS, SEE "SOUND BARRIER WALL DETAILS" SHEET 1 OF 3.
- FOR CONCRETE SHIM BLOCK DETAILS, SEE "SOUND BARRIER WALL DETAILS" SHEET 1 OF 3.
- FOR PRECAST PANEL DETAILS, SEE "SOUND BARRIER WALL DETAILS" SHEET 1 OF 3.
- FOR CONCRETE PILE DETAILS, SEE "SOUND BARRIER WALL DETAILS" SHEETS 1 & 2 OF 3.
- AT THE CONTRACTOR'S OPTION, USE CONTINUOUS FLIGHT AUGER PILES IN LIEU OF PILE EXCAVATION FOR SOUND BARRIER WALL FOUNDATION. SEE "CONTINUOUS FLIGHT AUGER PILES FOR SOUND BARRIER WALLS" SPECIAL PROVISION.
- THE ARCHITECTURAL CONCRETE SURFACE TREATMENT SHALL MATCH THE APPEARANCE (STONE SIZE AND SHAPE, STONE TEXTURE, PATTERN AND RELIEF) OF NATURAL STONE TO RESEMBLE A DRY STACKED STONE PATTERN WITH FEDERAL STANDARD 595 COLOR \* FS30450 STAIN.

**EXPOSURE CATEGORY D - PILE REINFORCING STEEL**

DESIGN WIND PRESSURE = 62 PSF (0' < H ≤ 14'); 71 PSF (14' < H ≤ 25')			
PILE TYPE I			
PILE SPACING	MAXIMUM WALL HEIGHT (H)	VERTICAL REINFORCING STEEL	TIES
15'-0"	H ≤ 15'	4 - #8 EA. FACE	*3 @ 11" CTS.
PILE TYPE II			
PILE SPACING	MAXIMUM WALL HEIGHT (H)	VERTICAL REINFORCING STEEL	TIES
15'-0"	H ≤ 15'	4 - #6 EA. FACE	*3 @ 11" CTS.

BILL OF MATERIAL -NW9-	
SOUND BARRIER WALL	S.F. 5,661
ARCHITECTURAL SURFACE TREATMENT	{ S.F. 9,450 } <sup>△</sup>
QUANTITIES PROVIDED ARE APPROXIMATE AND ARE FOR BID PURPOSES ONLY.	

<sup>△</sup> REVISED ARCHITECTURAL SURFACE TREATMENT QUANTITY  
**PROJECT NO. U-4751**  
**NEW HANOVER COUNTY**  
**STATION: 93+91.15 -L- = 10+00.00 -NW9-**

DOCUMENT NOT CONSIDERED FINAL UNLESS ALL SIGNATURES COMPLETED		STATE OF NORTH CAROLINA DEPARTMENT OF TRANSPORTATION RALEIGH  <b>SOUND BARRIER WALL NO. -NW9-</b>																		
		REVISIONS <table border="1"> <tr> <th>NO.</th> <th>BY:</th> <th>DATE:</th> <th>NO.</th> <th>BY:</th> <th>DATE:</th> </tr> <tr> <td>1</td> <td>STV</td> <td>10-17</td> <td>3</td> <td></td> <td></td> </tr> <tr> <td>2</td> <td></td> <td></td> <td>4</td> <td></td> <td></td> </tr> </table>	NO.	BY:	DATE:	NO.	BY:	DATE:	1	STV	10-17	3			2			4		
	NO.	BY:	DATE:	NO.	BY:	DATE:														
1	STV	10-17	3																	
2			4																	
STV ENGINEERS, INC. 900 West Trade St., Suite 715 Charlotte, NC 28202 NC License Number F-5991	SHEET NO. NW-6 TOTAL SHEETS 17																			

DRAWN BY : <b>MBC</b>	DATE : <b>5-17</b>	DESIGN ENGINEER OF RECORD: <b>J. DICHAK</b>	DATE : <b>5-17</b>
CHECKED BY : <b>JAD</b>	DATE : <b>5-17</b>		