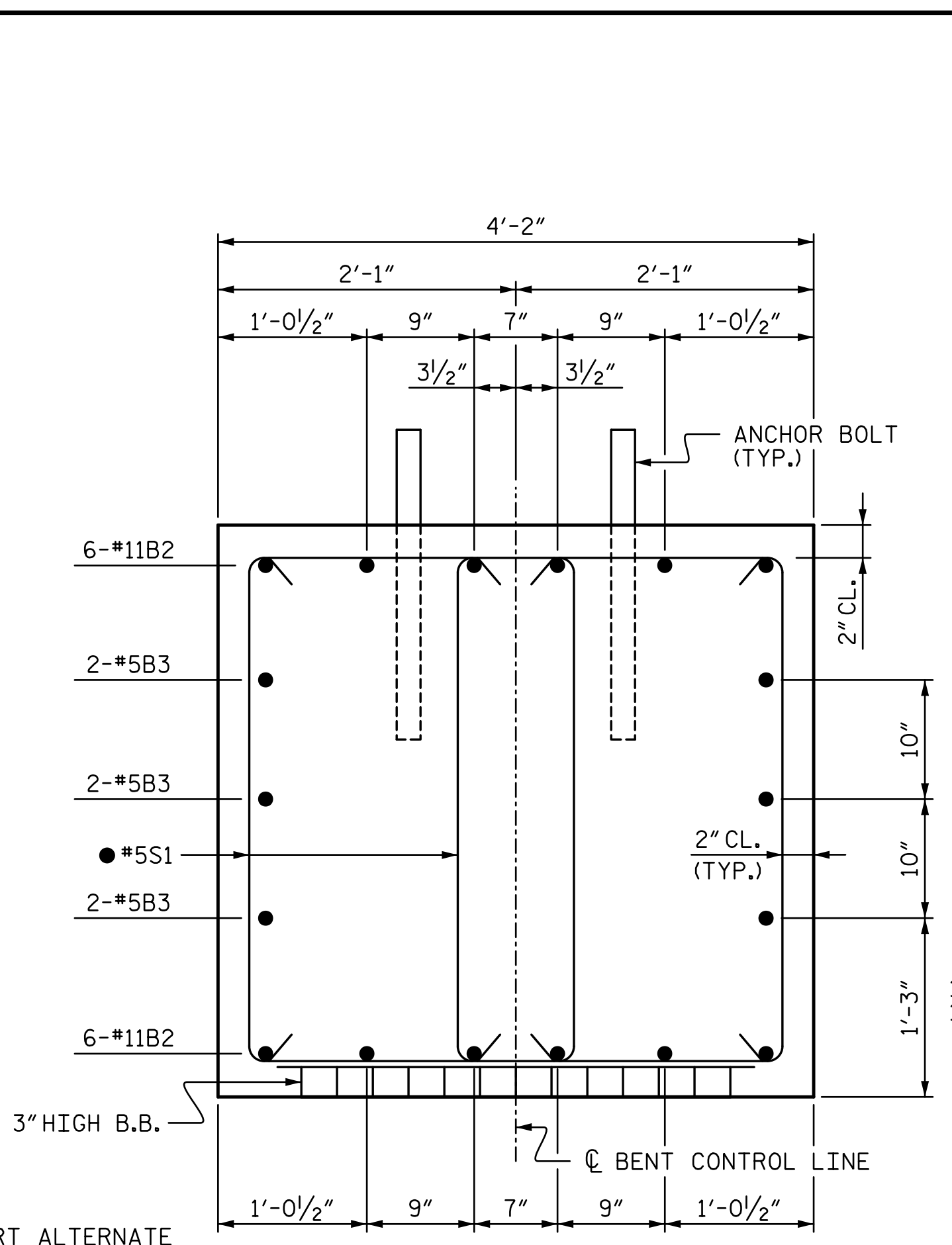
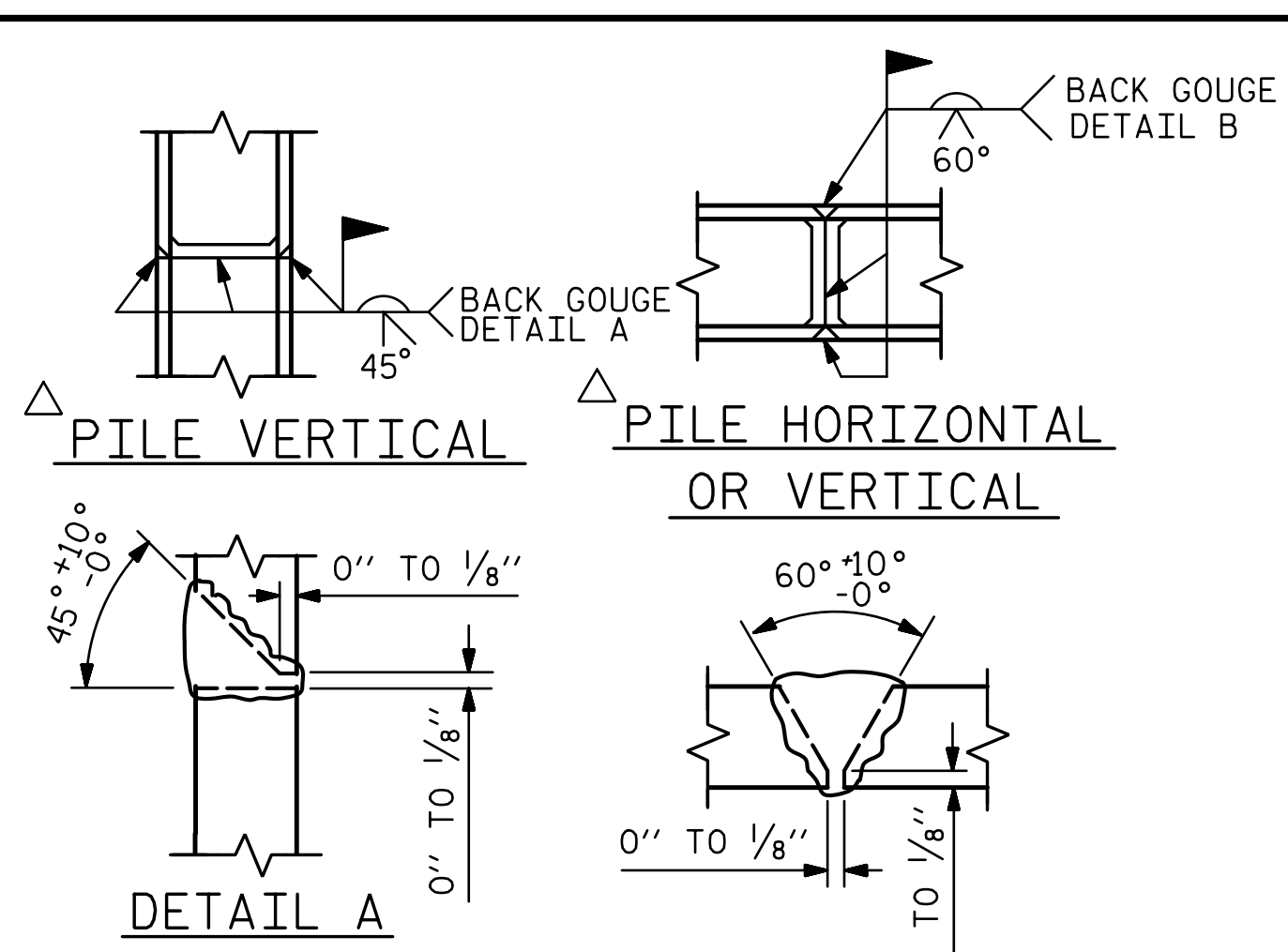


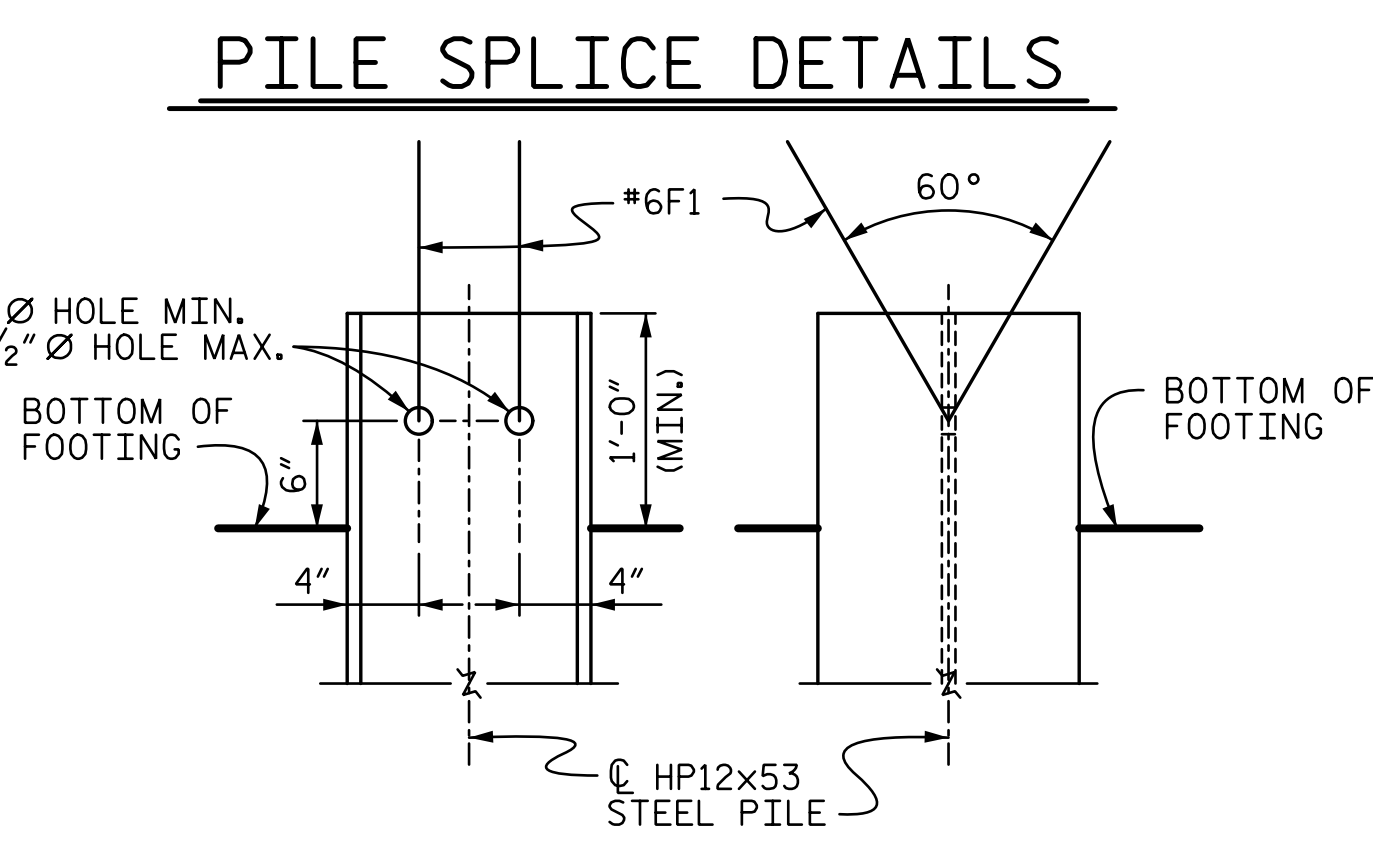
SECTION A-A



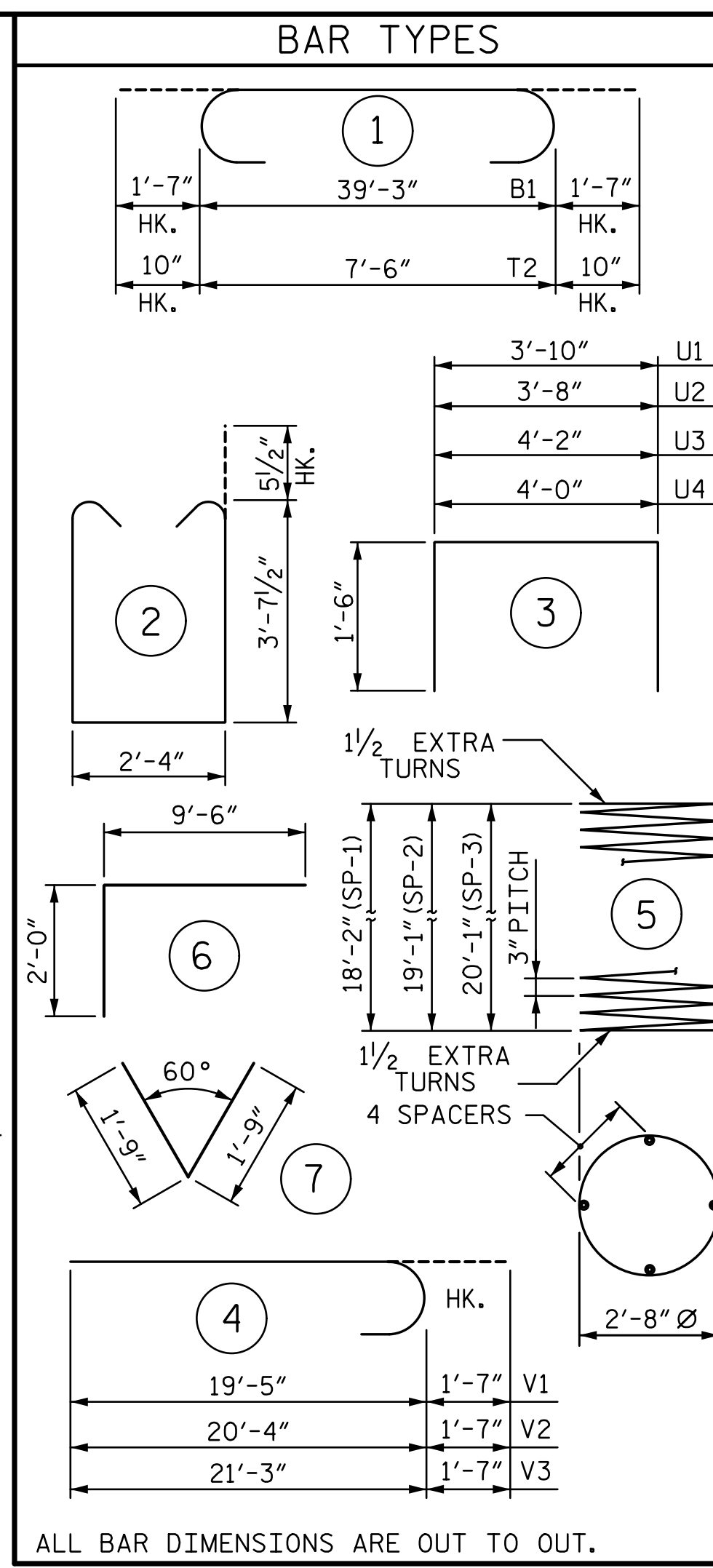
SECTION B-B



PILE SPlice DETAILS



PILE ANCHORAGE DETAIL

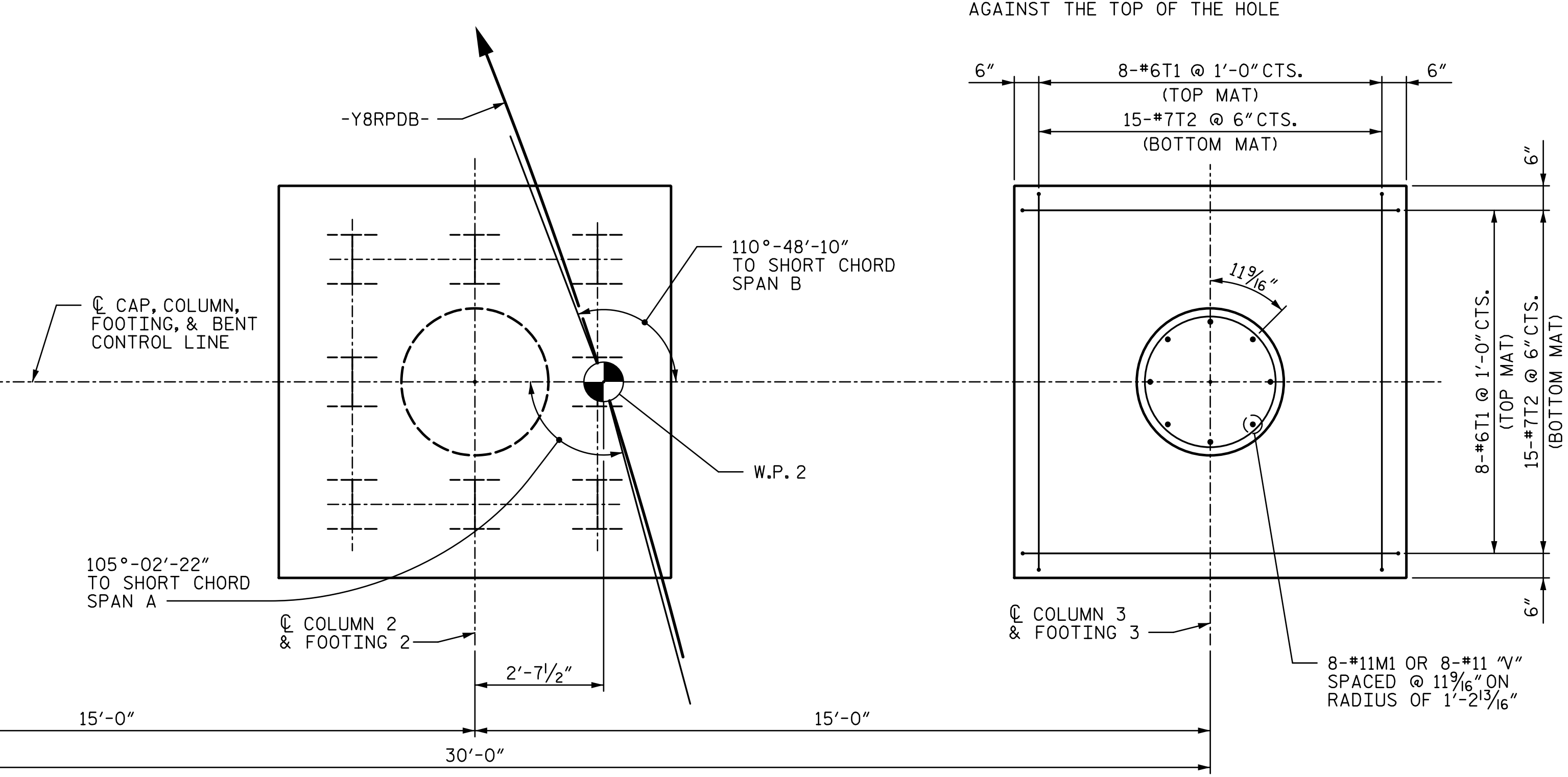
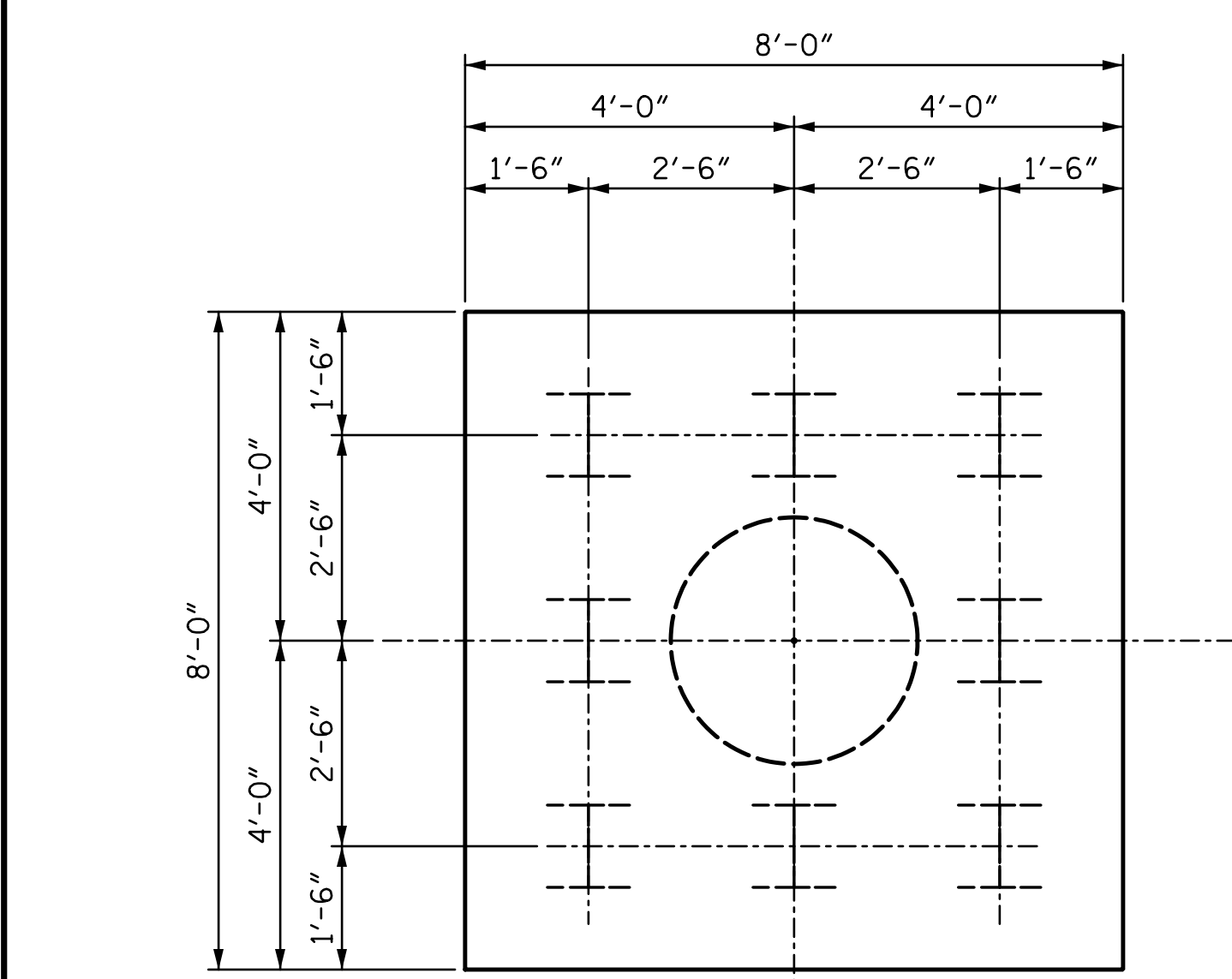


ALL BAR DIMENSIONS ARE OUT TO OUT.

BILL OF MATERIAL					
BENT 1					
BAR	NO.	SIZE	TYPE	LENGTH	WEIGHT
B1	6	#11		42'-5"	1,352
B2	6	#11	STR	39'-5"	1,257
B3	6	#5	STR	39'-5"	247
B4	18	#4	STR	8'-0"	96
B5	6	#4	STR	4'-3"	17
F1	48	#6		3'-6"	252
M1	24	#11		11'-6"	1,466
S1	100	#5		10'-6"	1,095
T1	48	#6	STR	7'-8"	553
T2	90	#7		9'-2"	1,686
U1	39	#4		6'-10"	178
U2	8	#4		6'-8"	36
U3	4	#4		7'-2"	19
U4	4	#4		7'-0"	19
V1	8	#11		21'-0"	893
V2	8	#11		21'-11"	932
V3	8	#11		22'-0"	971
SP-1	1	**		743'-2"	496
SP-2	1	**		779'-2"	520
SP-3	1	**		818'-5"	547

QUANTITIES		
REINFORCING STEEL	LBS.	11,069
SPIRAL COLUMN REINFORCING STEEL	LBS.	1,563
CLASS A CONCRETE:		
POUR #1 FOOTINGS	C.Y.	21.3
POUR #2 COLUMNS	C.Y.	14.8
POUR #3 CAP	C.Y.	27.0
TOTAL	C.Y.	63.1
HP 12x53 STEEL PILES	NO.	24
	LIN. FT.	1,080
PILE REDRIVES	EA.	12
PILE DRIVER SETUP FOR HP12x53 PILES	EA.	24
FOUNDATION EXCAVATION	LUMP SUM	

\*\* THE SP-1, SP-2 & SP-3 SPIRAL REINFORCING STEEL SHALL BE W20 OR D-20 COLD DRAWN WIRE OR #4 PLAIN OR DEFORMED BAR.



PLAN OF FOOTINGS

(ALL FOOTINGS, COLUMN DIMENSIONS AND REINFORCING STEEL ARE TYPICAL) (PILE ARRANGMENT FOR FOOTINGS ARE THE SAME)

DRAWN BY: MBC DATE: 4-17  
 CHECKED BY: TRL DATE: 4-17  
 DESIGN ENGINEER OF RECORD: T. LAWS DATE: 5-17

DOCUMENT NOT CONSIDERED FINAL UNLESS ALL SIGNATURES COMPLETED

STV ENGINEERS, INC. 100 Years  
 900 West Trade St., Suite 715  
 Charlotte, NC 28202  
 NC License Number F-5991

PROJECT NO. U-4751  
 NEW HANOVER COUNTY  
 STATION: 35+12.05 -Y8RPDB-  
 SHEET 2 OF 2

STATE OF NORTH CAROLINA DEPARTMENT OF TRANSPORTATION RALEIGH					
SUBSTRUCTURE BENT 1					
REVISIONS					
NO.	BY:	DATE:	NO.	BY:	DATE:
1			3		
2			4		

SHEET NO. S4-29
TOTAL SHEETS 36

r:\404\_057\_U4751\_SML\_BI\_029\_640204.dgn  
 6/30/2017 13:14:28  
 +townsend