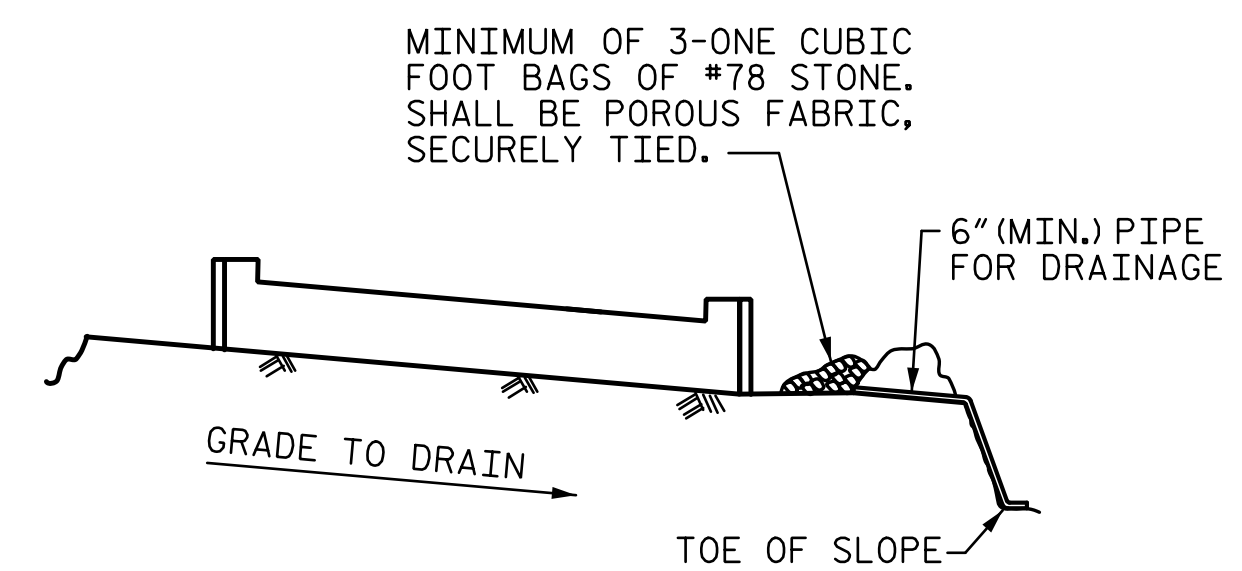


7/12/2017 2:14:55 PM \\USPADG\dfs02\vol3\Projects\4018617\0001\50_Deliverables & Submittals\U-4751\Structures\Bridges_203\Station\Final\403_063_U4751_SMU_E2_032_640203.dgn

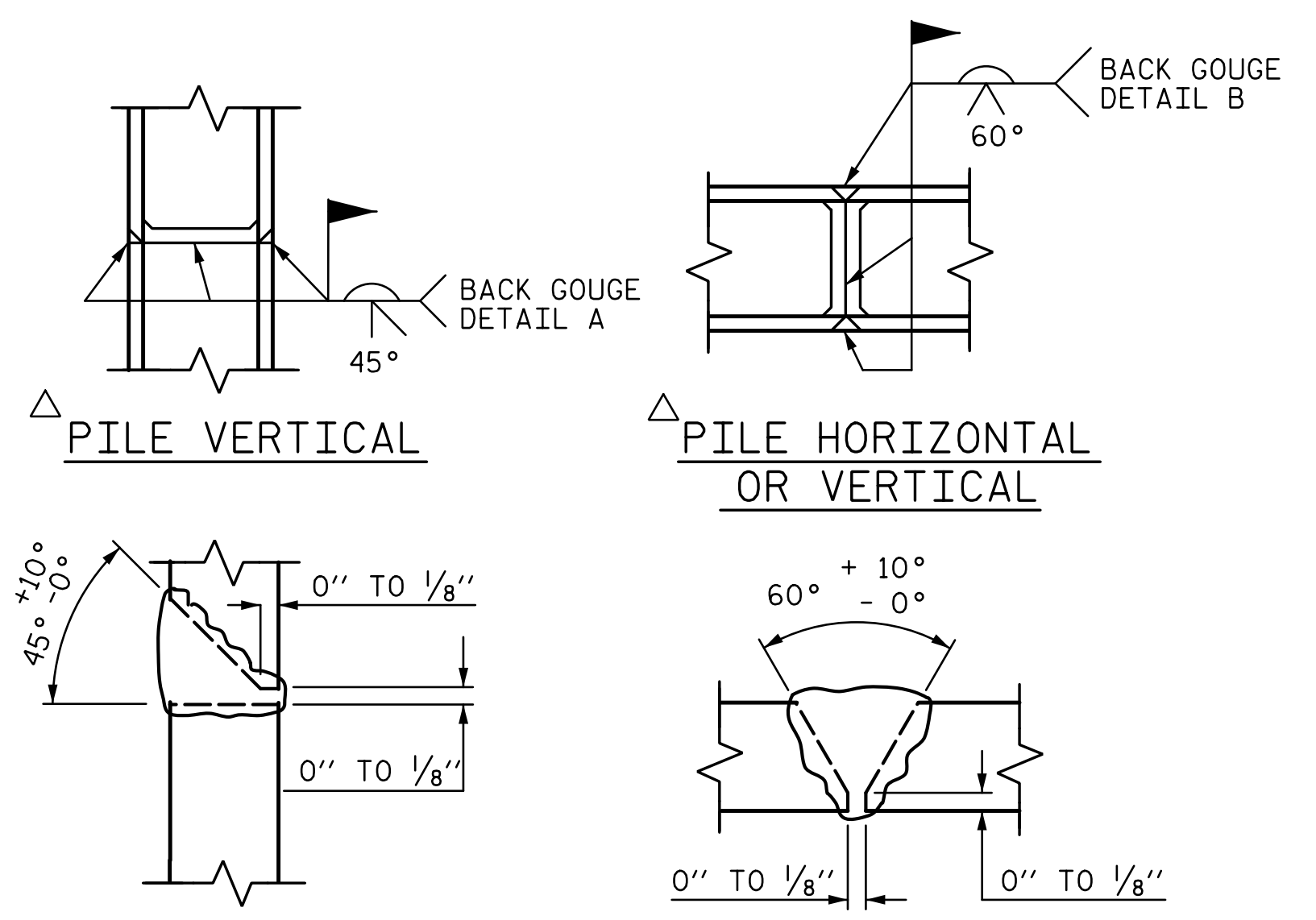


BAGGED STONE AND PIPE SHALL BE PLACED IMMEDIATELY AFTER COMPLETION OF END BENT EXCAVATION. PIPE MAY BE EITHER CONCRETE, CORRUGATED STEEL, CORRUGATED ALUMINIUM ALLOY, OR CORRUGATED PLASTIC. PERFORATED PIPE WILL NOT BE ALLOWED.

BAGGED STONE SHALL REMAIN IN PLACE UNTIL THE ENGINEER DIRECTS THAT IT BE REMOVED. THE CONTRACTOR SHALL REMOVE AND DISPOSE OF SILT ACCUMULATIONS AT BAGGED STONE WHEN SO DIRECTED BY THE ENGINEER. BAGS SHALL BE REMOVED AND REPLACED WHENEVER THE ENGINEER DETERMINES THAT THEY HAVE DETERIORATED AND LOST EFFECTIVENESS.

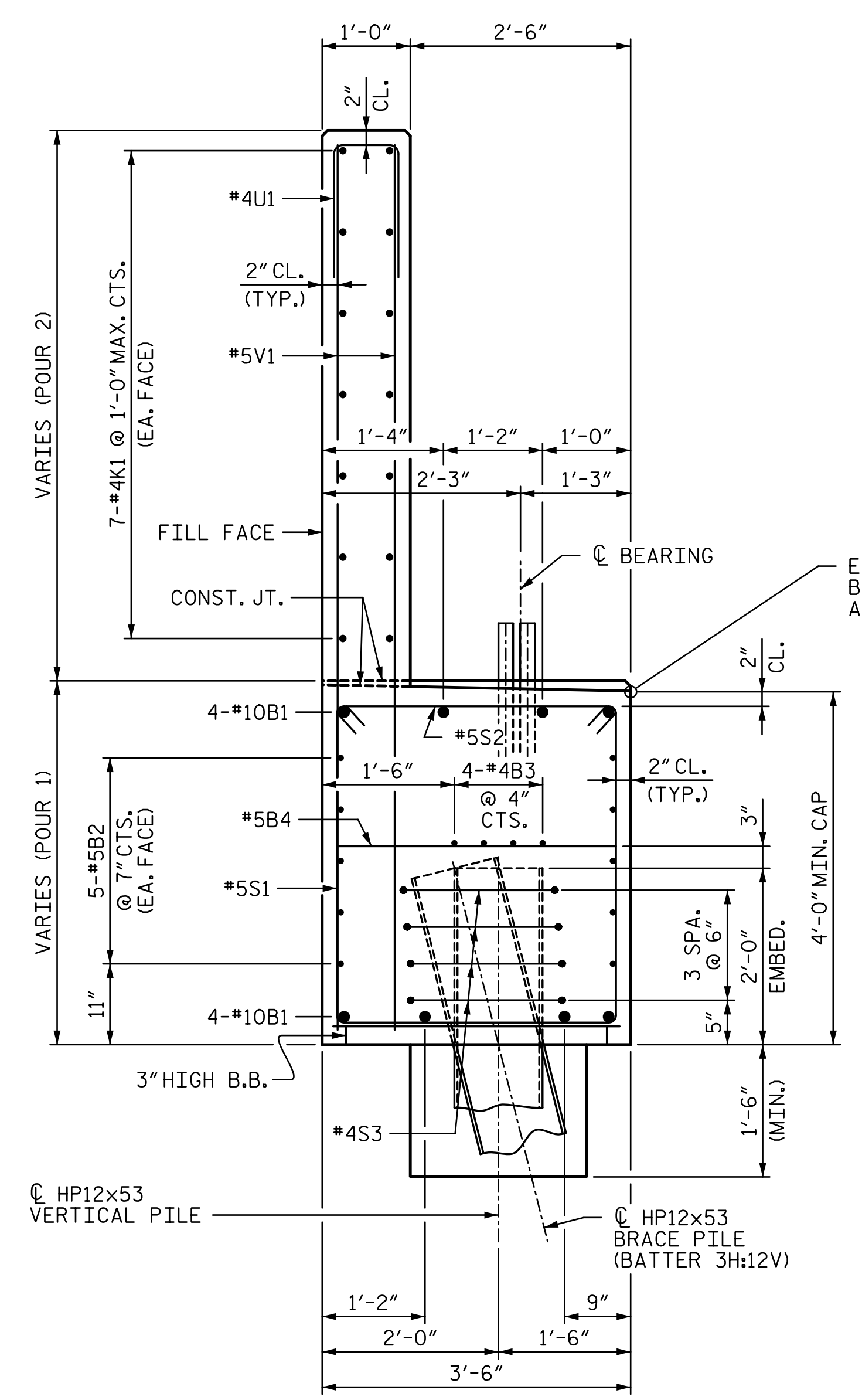
NO SEPARATE PAYMENT WILL BE MADE FOR THIS WORK AND THE ENTIRE COST OF THIS WORK SHALL BE INCLUDED IN THE UNIT CONTRACT PRICE BID FOR THE SEVERAL PAY ITEMS.

TEMPORARY DRAINAGE AT END BENT



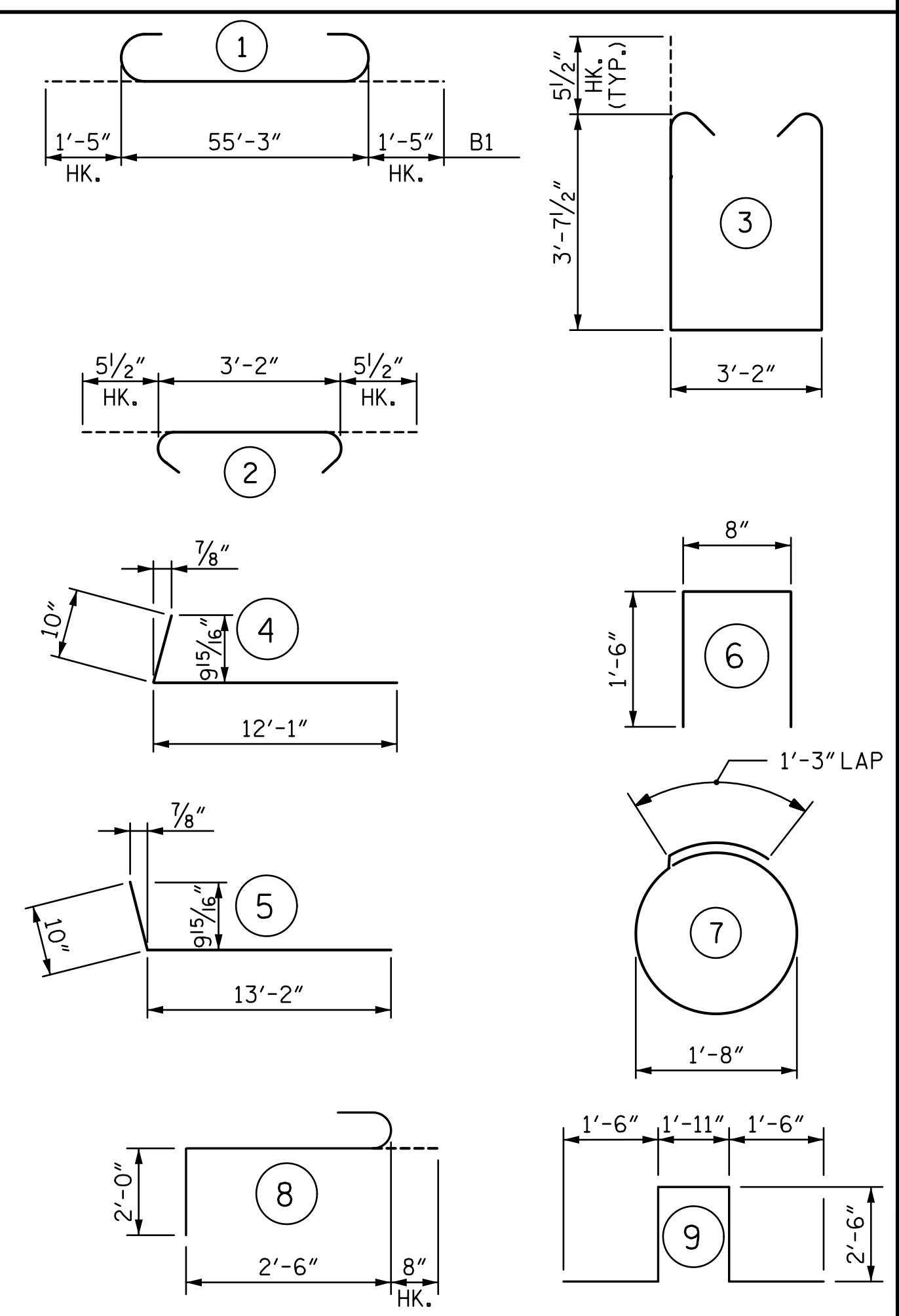
PILE SPLICE DETAILS

△ POSITION OF PILE DURING WELDING.



SECTION A-A

BAR TYPES



ALL BAR DIMENSIONS ARE OUT TO OUT

BILL OF MATERIAL FOR END BENT 2

BAR	NO.	SIZE	TYPE	LENGTH	WEIGHT
B1	8	#10	1	58'-1"	1,999
B2	10	#5	STR	55'-5"	578
B3	8	#4	STR	28'-11"	155
B4	14	#4	STR	3'-2"	30
H1	48	#6	4	12'-11"	931
H2	28	#4	5	14'-0"	262
K1	28	#4	STR	28'-11"	541
K2	4	#4	STR	2'-9"	7
K3	4	#4	STR	2'-8"	7
S1	74	#5	3	11'-4"	875
S2	74	#5	2	4'-1"	315
S3	32	#4	7	6'-6"	139
S4	3	#6	8	5'-2"	23
S5	3	#6	9	9'-11"	45
U1	50	#4	6	3'-8"	122
V1	50	#5	STR	9'-10"	513
V2	32	#5	STR	11'-3"	375
V3	34	#5	STR	11'-10"	420

QUANTITIES

REINFORCING STEEL	LBS.	7,337
CLASS A CONCRETE:		
POUR 1:		
CAP, COLLARS, & LOWER WING	C.Y.	34.7
POUR 2:		
BACKWALL & UPPER WING	C.Y.	20.3
TOTAL	C.Y.	55.0
HP 12x53 STEEL PILES	NO.	9
	LIN. FEET	675
PILE SETUP FOR HP 12x53 PILES	EA.	9

PROJECT NO. U-4751
NEW HANOVER COUNTY
 STATION: 225+92.26 -L-
 SHEET 3 OF 3

DOCUMENT NOT CONSIDERED FINAL
 UNLESS ALL SIGNATURES COMPLETED

STV 100 years
 STV ENGINEERS, INC.
 900 West Trade St., Suite 715
 Charlotte, NC 28202
 NC License Number F-5991

STATE OF NORTH CAROLINA
 DEPARTMENT OF TRANSPORTATION
 RALEIGH
 SUBSTRUCTURE
 END BENT 2

REVISIONS			
NO.	BY:	DATE:	DATE:
1			
2			
3			
4			

SHEET NO. S3-32
 TOTAL SHEETS 36

DRAWN BY : <u>MBC</u>	DATE : <u>4-17</u>	DESIGN ENGINEER OF RECORD : <u>P. KELLY</u>	DATE : <u>5-17</u>
CHECKED BY : <u>VMW</u>	DATE : <u>5-17</u>		