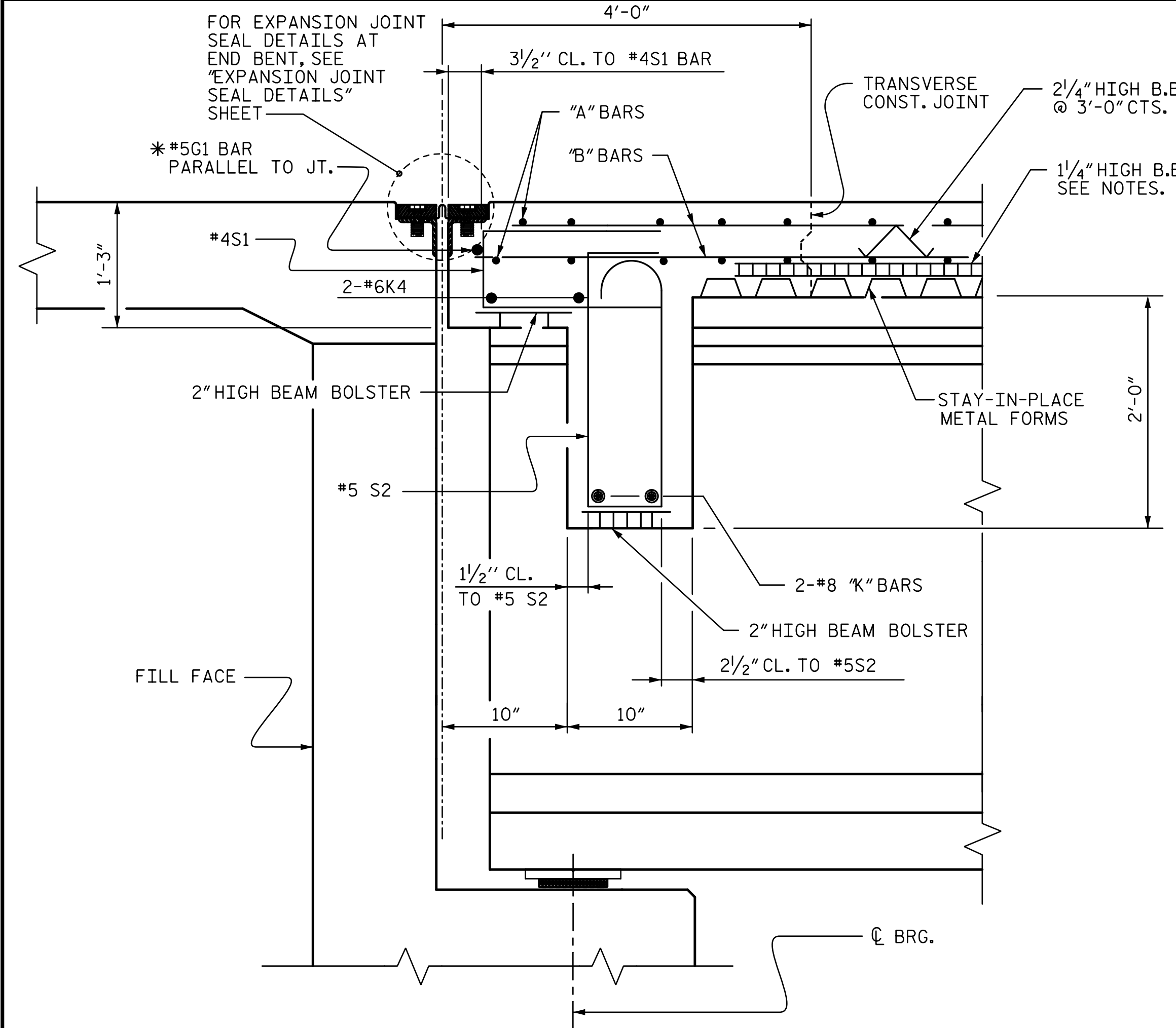
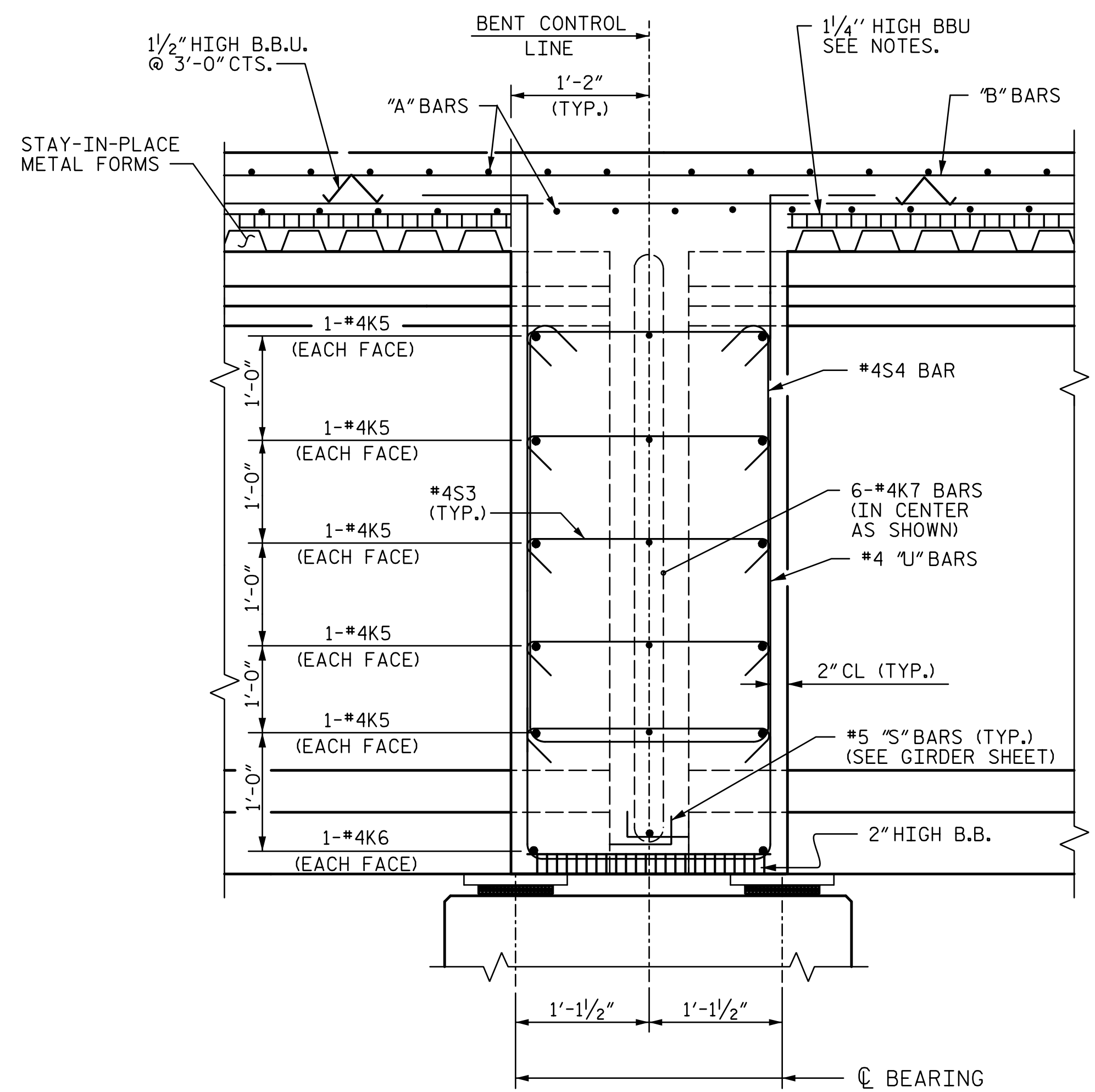


7/12/2017 2:13:05 PM \\USPADG\dfs02\vol3\Projects\408617\408617_000\50_Deliverables & Submittals\U-4751\Structures\Bridges 203\Station\Final\403_U4751_SML_TSOI_007_640203.dgn

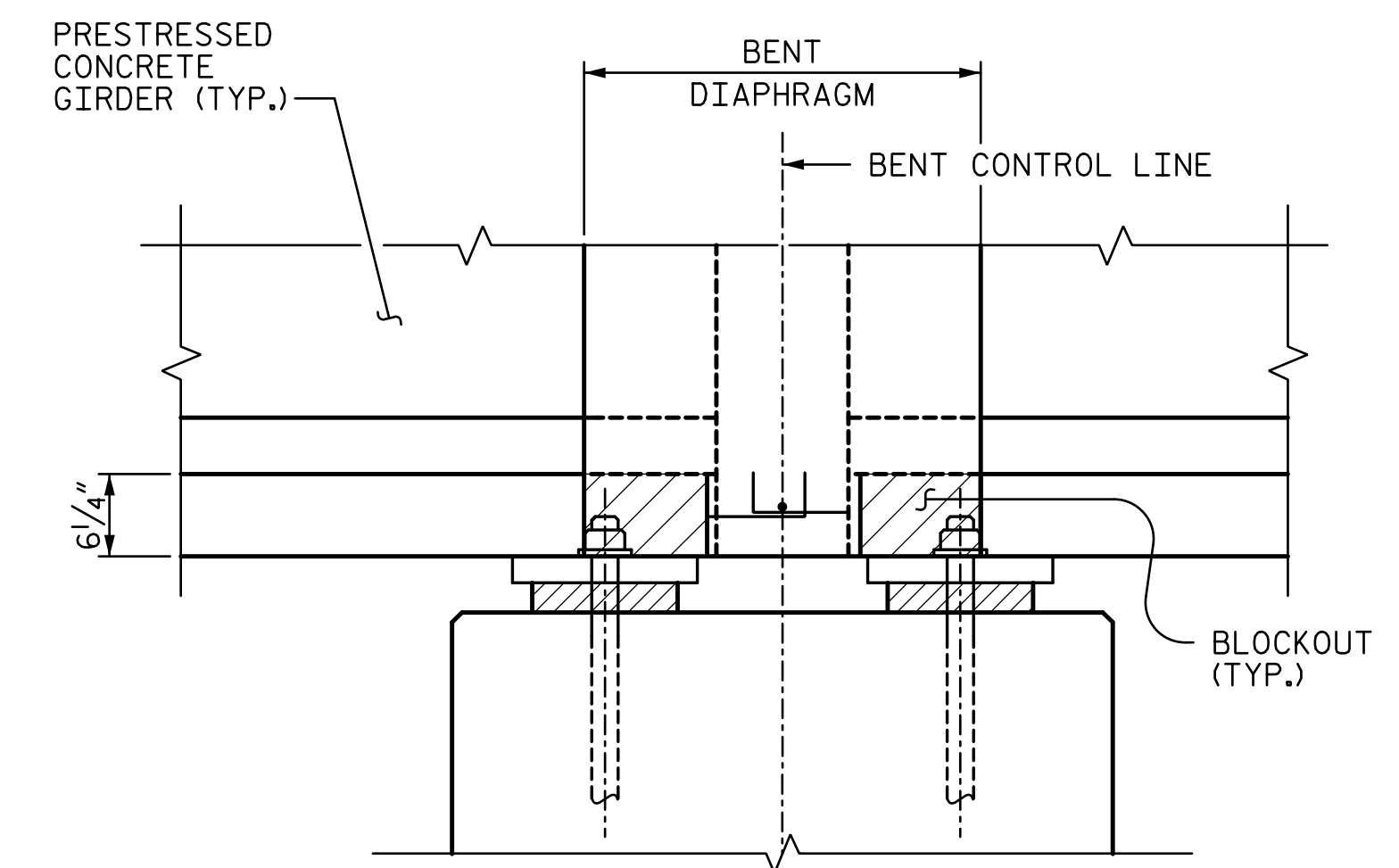


SECTION THRU END DIAPHRAGM

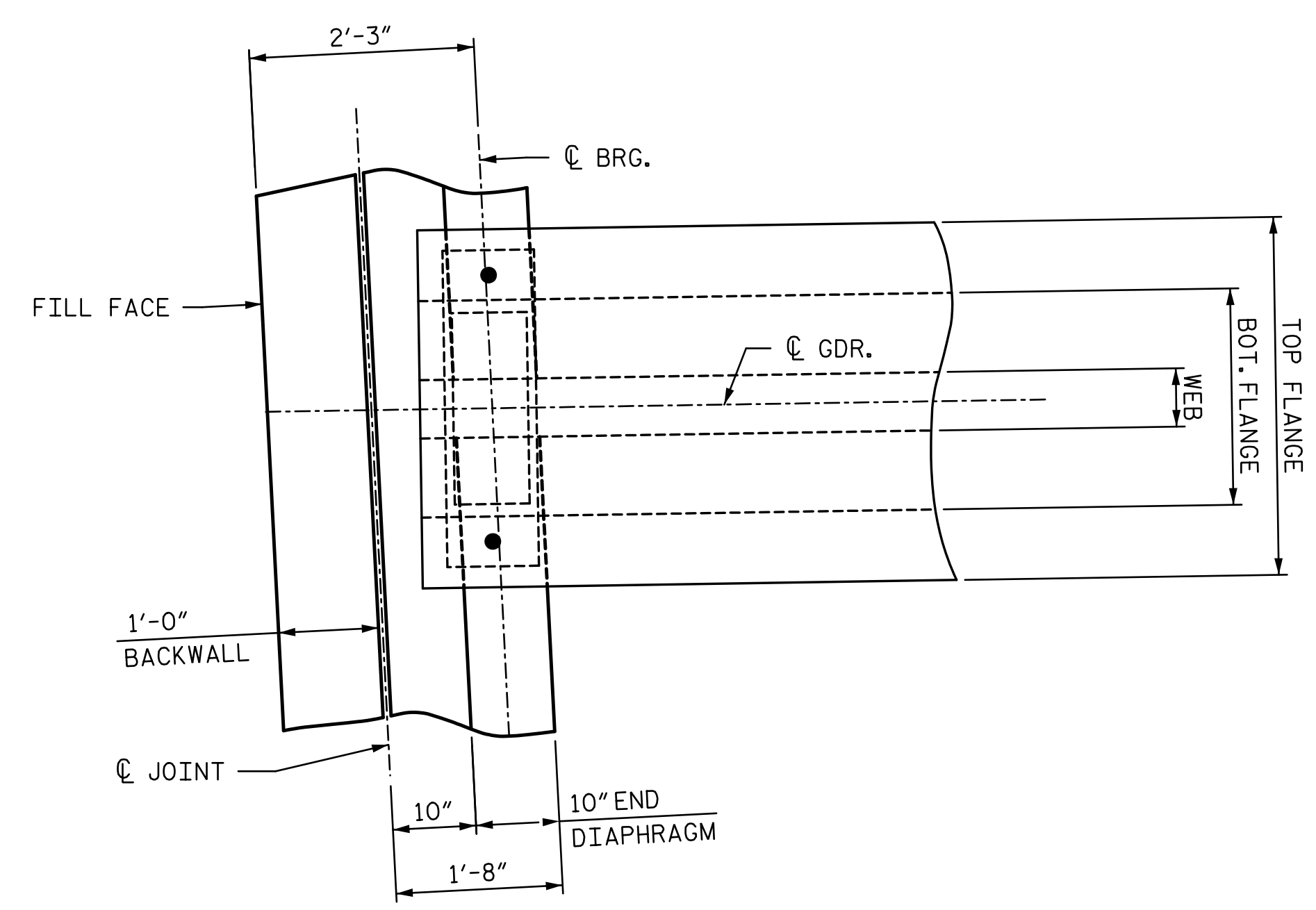
* #5G BAR MAY BE SHIFTED SLIGHTLY, AS NECESSARY, TO CLEAR REINFORCING STEEL AND STIRRUPS.



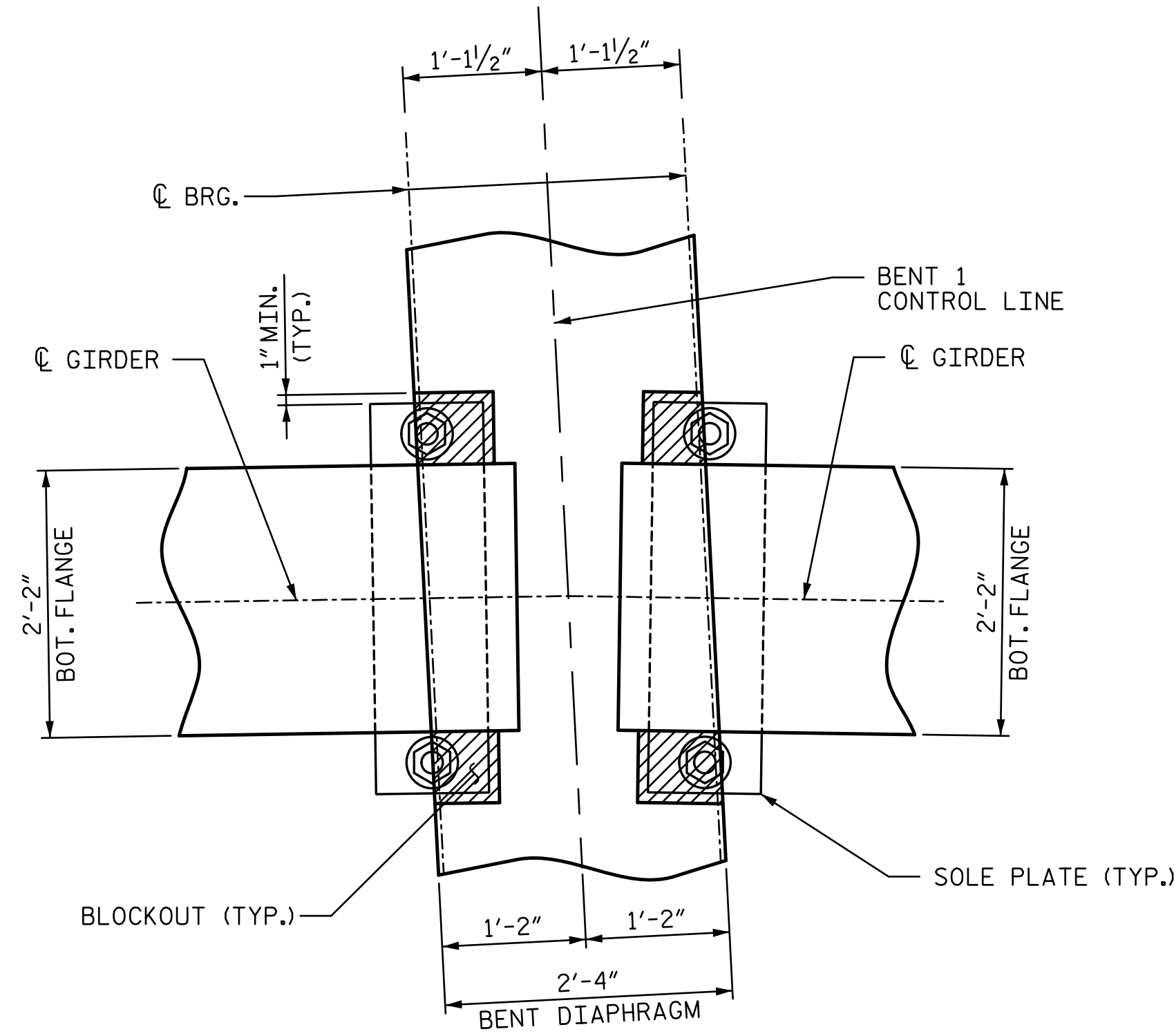
SECTION THRU BENT DIAPHRAGM



BENT DIAPHRAGM BLOCKOUT DETAILS
(PRESTRESSED GIRDERS WITH CONTINUOUS DECK SLAB)



PLAN OF END DIAPHRAGM
(END BENT 1 SHOWN, END BENT 2 SIMILAR)



PLAN OF BENT DIAPHRAGM

PROJECT NO. U-4751
NEW HANOVER COUNTY
 STATION: 225+92.26 -L-
 SHEET 2 OF 2

DOCUMENT NOT CONSIDERED FINAL UNLESS ALL SIGNATURES COMPLETED			STATE OF NORTH CAROLINA DEPARTMENT OF TRANSPORTATION RALEIGH SUPERSTRUCTURE TYPICAL SECTION DETAILS		SHEET NO. S3-7
	REVISIONS				TOTAL SHEETS 36
	NO.	BY:	DATE:	NO.	BY:
1			3		
2			4		

DRAWN BY : <u>MBC</u>	DATE : <u>3-17</u>	DESIGN ENGINEER OF RECORD: <u>P. KELLY</u>	DATE : <u>5-17</u>
CHECKED BY : <u>PEK</u>	DATE : <u>5-17</u>		