

NOTES

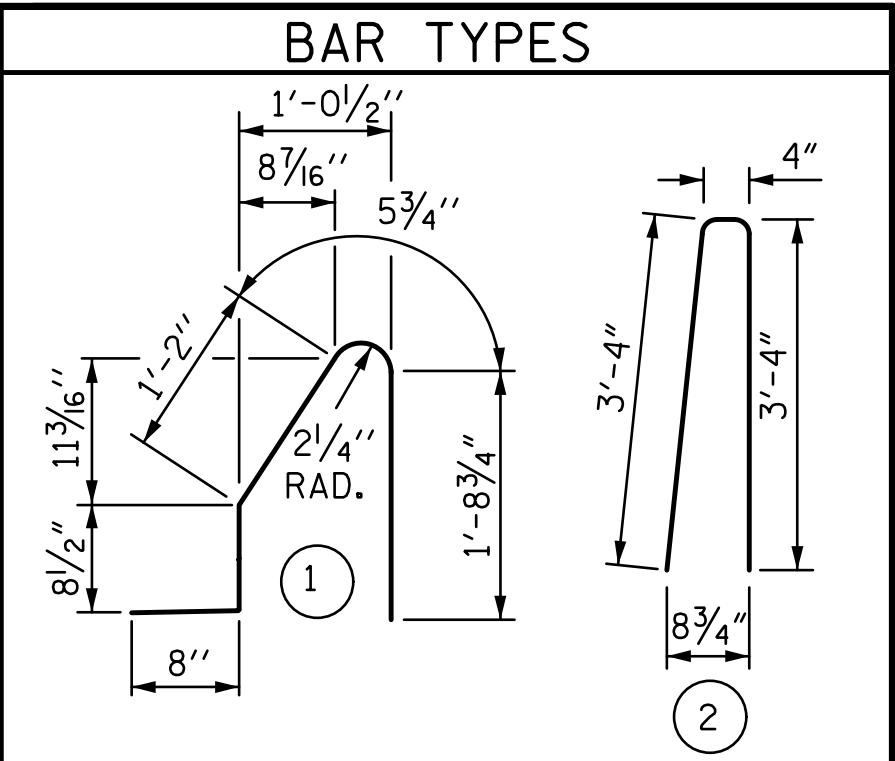
THE BARRIER RAIL IN EACH SPAN SHALL NOT BE CAST UNTIL ALL SLAB CONCRETE IN THAT SPAN HAS BEEN CAST AND HAS REACHED A MINIMUM COMPRESSIVE STRENGTH OF 3,000 PSI.

ALL REINFORCING STEEL IN BARRIER RAILS SHALL BE EPOXY COATED.

THE #5 S1 AND #5 S2 BARS MAY BE SHIFTED SLIGHTLY IN ORDER TO MAINTAIN A 2" MINIMUM CLEARANCE TO 1/2" EXPANSION JOINT MATERIAL IN THE BARRIER RAIL.

GROOVED CONTRACTION JOINTS, 1/2" IN DEPTH, SHALL BE TOOLED IN ALL EXPOSED FACES OF THE BARRIER RAIL AND IN ACCORDANCE WITH ARTICLE 825-10(B) OF THE STANDARD SPECIFICATIONS. THE CONTRACTION JOINT SHALL BE LOCATED AT EACH THIRD POINT BETWEEN BARRIER RAIL EXPANSION JOINTS. ONLY ONE CONTRACTION JOINT IS REQUIRED AT MIDPOINT OF BARRIER RAIL SEGMENTS LESS THAN 20 FEET IN LENGTH AND NO CONTRACTION JOINTS ARE REQUIRED FOR THOSE SEGMENTS LESS THAN 10 FEET IN LENGTH.

FOR CONCRETE BARRIER RAIL ON APPROACH SLAB, SEE "BRIDGE APPROACH SLAB DETAILS" SHEETS.

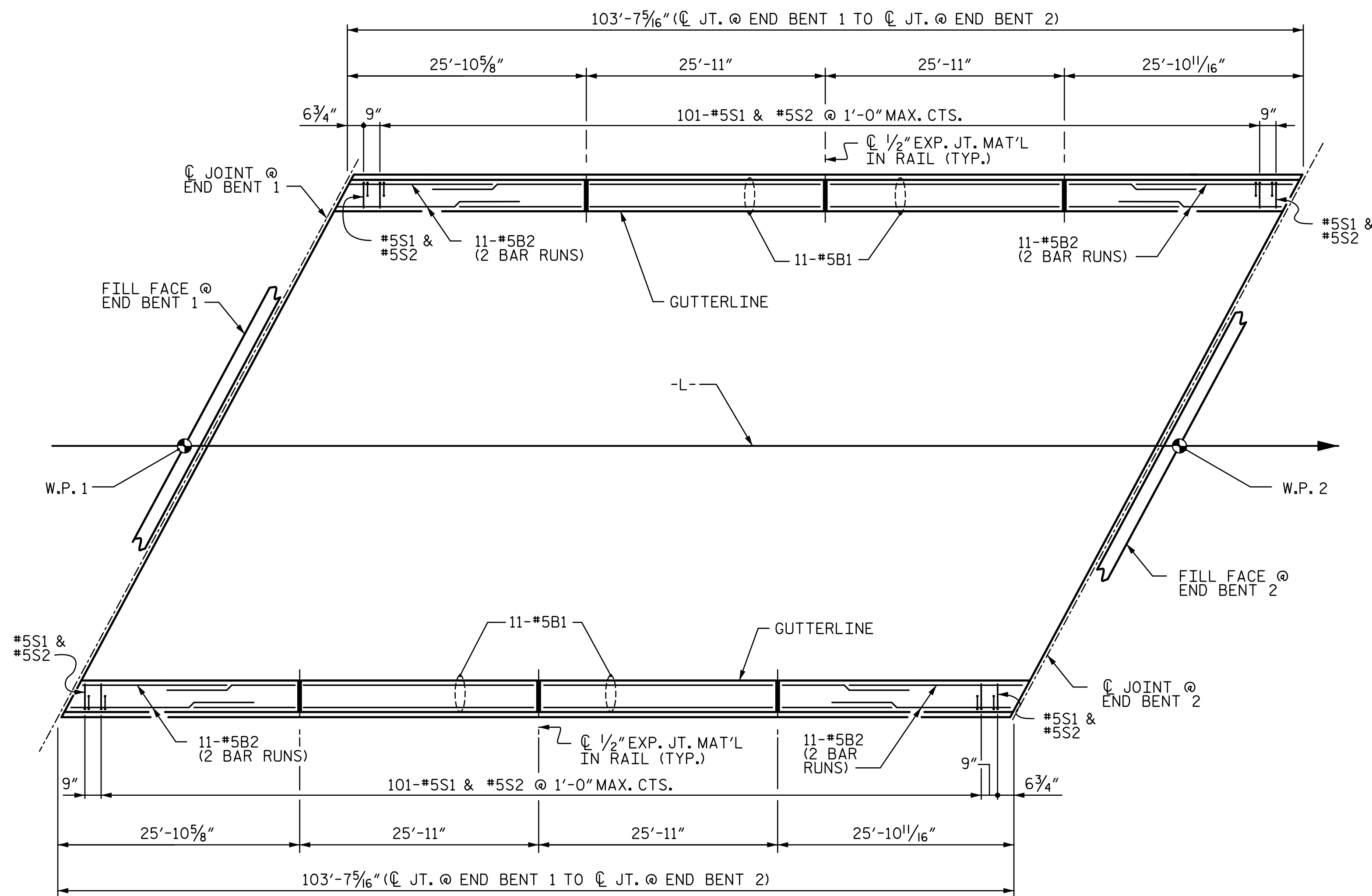


ALL BAR DIMENSIONS ARE OUT TO OUT

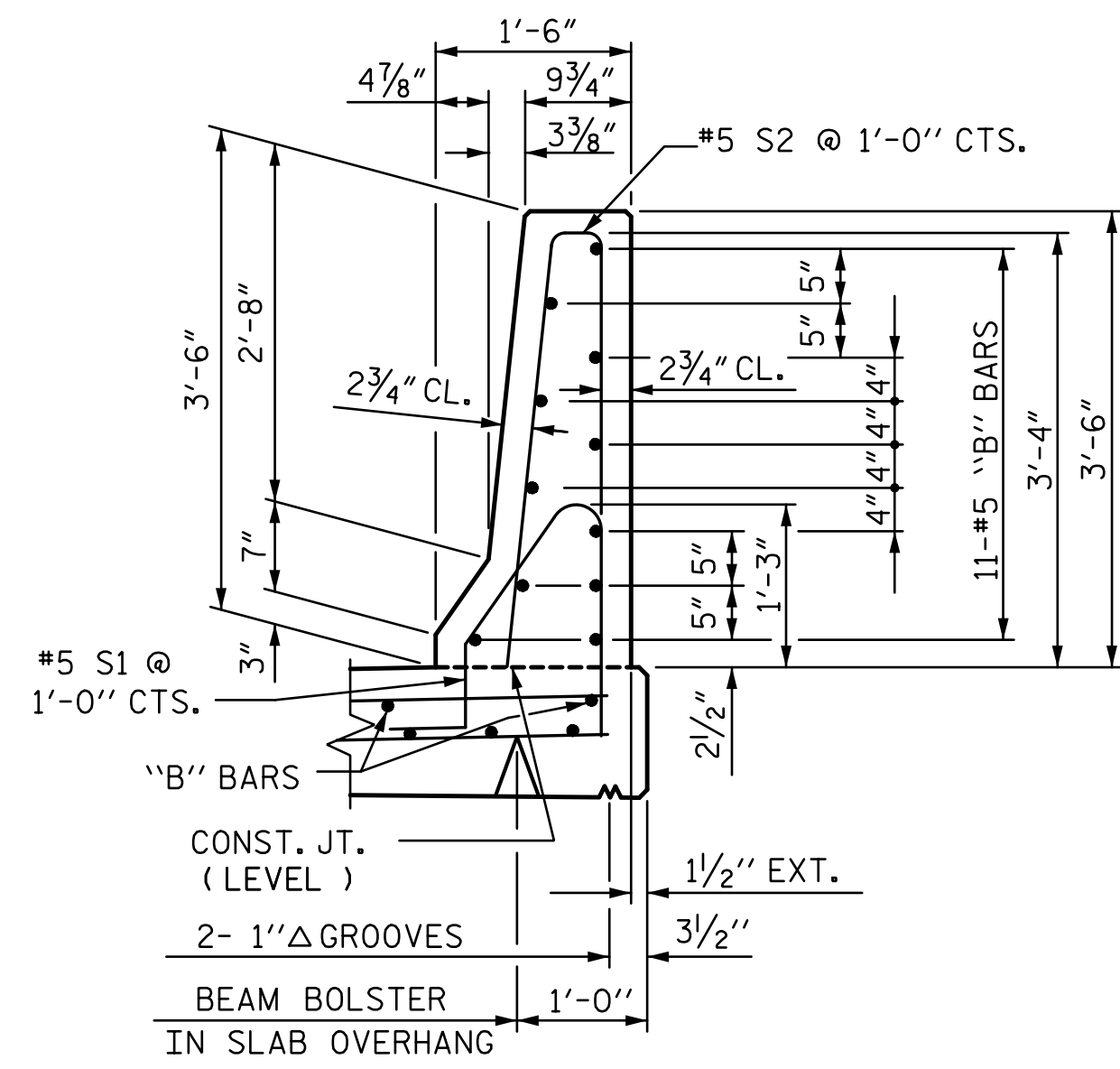
BILL OF MATERIAL

FOR CONCRETE BARRIER RAIL ONLY					
BAR	NO.	SIZE	TYPE	LENGTH	WEIGHT
*B1	44	#5	STR	25'-6"	1,170
*B2	88	#5	STR	14'-0"	1,285
*S1	206	#5	1	4'-9"	1,021
*S2	206	#5	2	7'-0"	1,504
* EPOXY COATED REINFORCING STEEL				4,980	LBS.
CLASS AA CONCRETE				28.2	CU. YDS.
CONCRETE BARRIER RAIL					
SUPERSTRUCTURE				207.2	LIN. FT.
● APPROACH SLABS				41.6	LIN. FT.
TOTAL				248.8	LIN. FT.

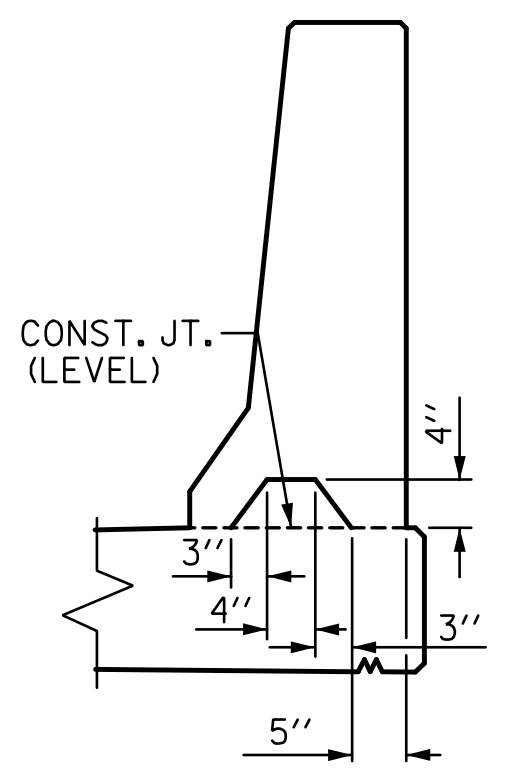
● FOR EPOXY COATED REINFORCING STEEL AND CLASS AA CONCRETE IN THE BARRIER RAIL ON THE APPROACH SLABS, SEE "BRIDGE APPROACH SLAB DETAILS" SHEET.



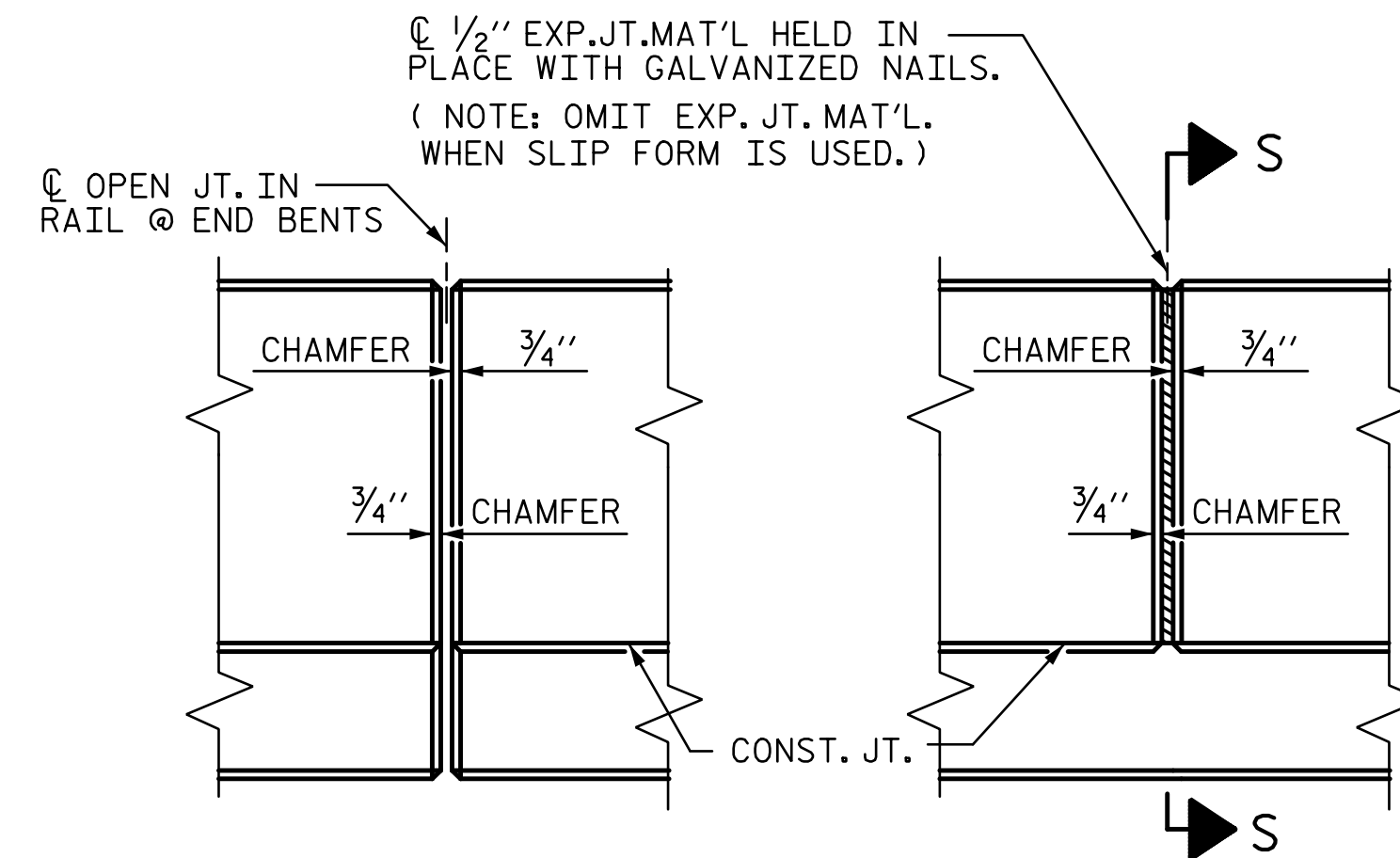
PLAN OF BARRIER RAIL



SECTION THRU RAIL



SECTION S-S  
AT DAM IN OPEN JOINT  
(THIS IS TO BE USED ONLY  
WHEN SLIP FORM IS USED)



ELEVATION AT EXPANSION JOINTS  
BARRIER RAIL DETAILS

PROJECT NO. U-4751  
NEW HANOVER COUNTY  
 STATION: 62+99.10 -L-

STATE OF NORTH CAROLINA  
DEPARTMENT OF TRANSPORTATION  
RALEIGH

SUPERSTRUCTURE  
CONCRETE BARRIER RAIL

REVISIONS

NO.	BY:	DATE:	NO.	BY:	DATE:
1			3		
2			4		

SHEET NO.  
S2-16

TOTAL SHEETS  
30

DRAWN BY: TJT DATE: 3-17 DESIGN ENGINEER OF RECORD: T. TOWNSEND DATE: 3-17  
 CHECKED BY: AJP DATE: 4-17

R:\402\_031\_U4751\_SMLJ\_BR\_016\_640202.dgn 6/27/2017 13:59:54