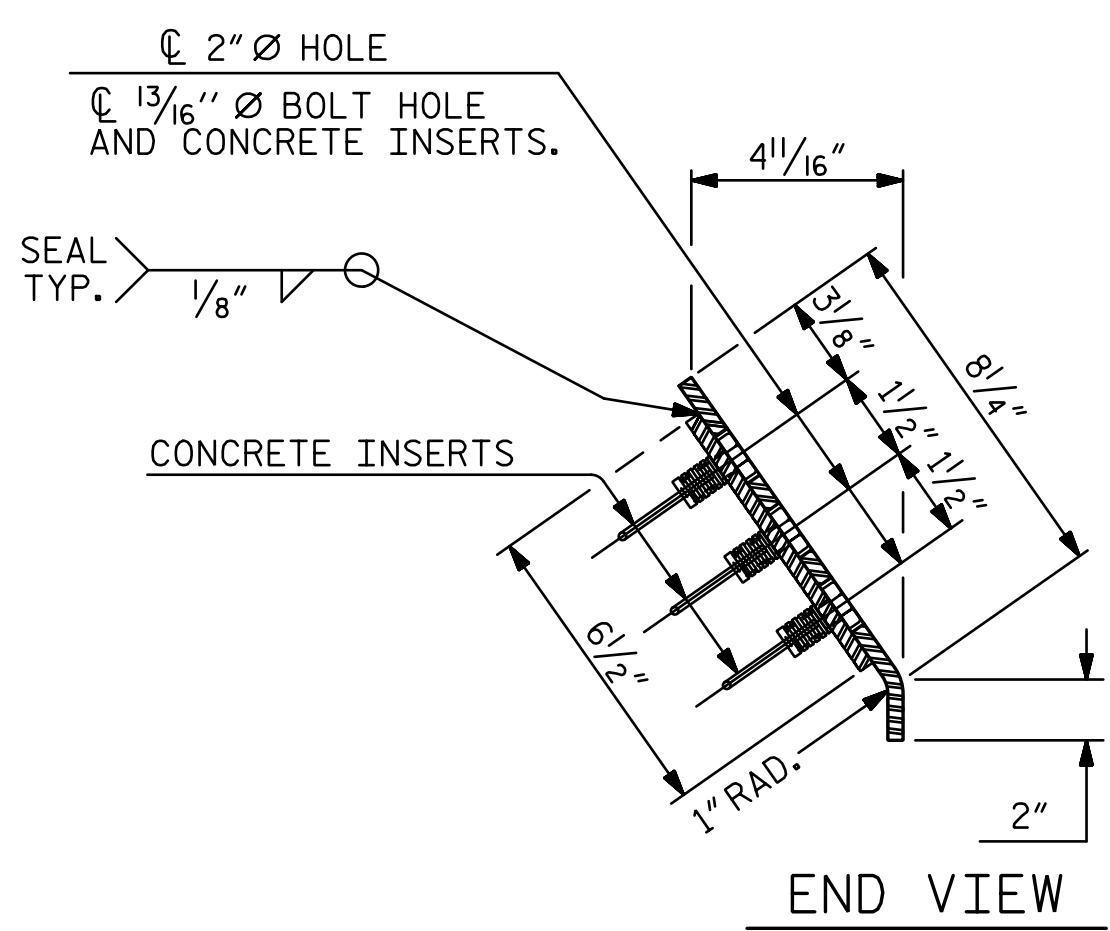
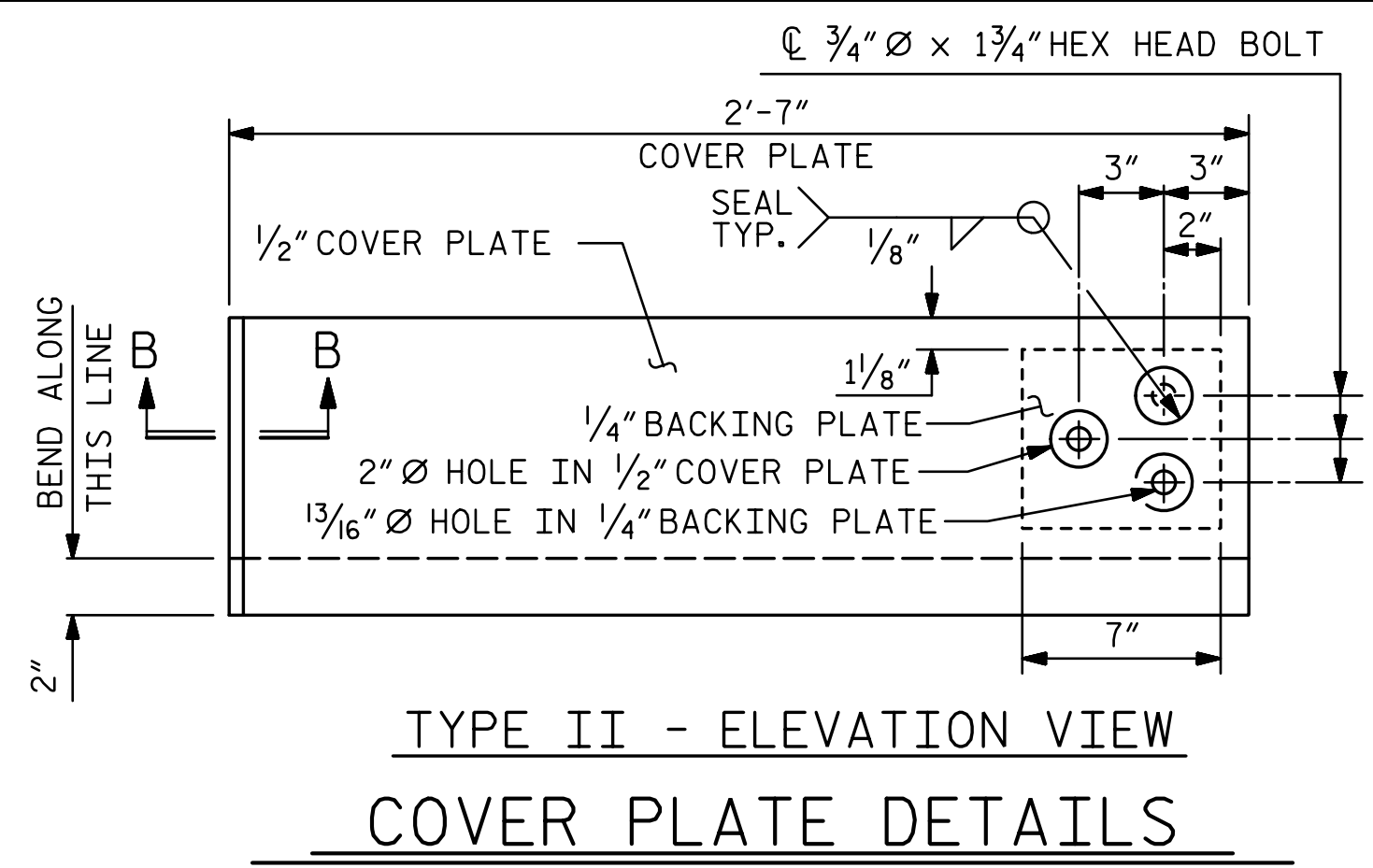


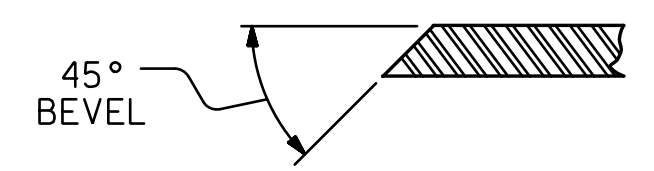
SECTION THRU RAIL NORMAL TO JOINT



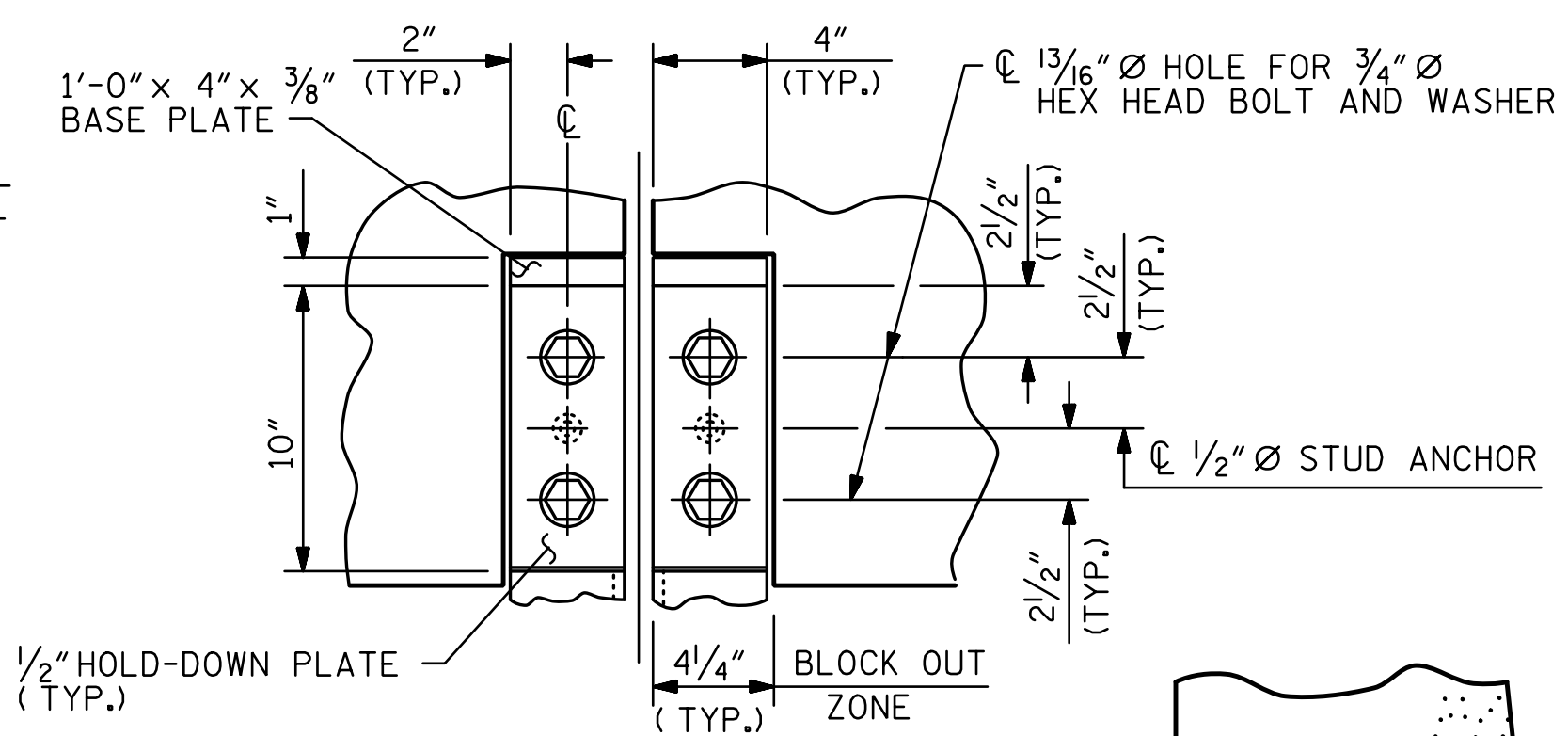
END VIEW



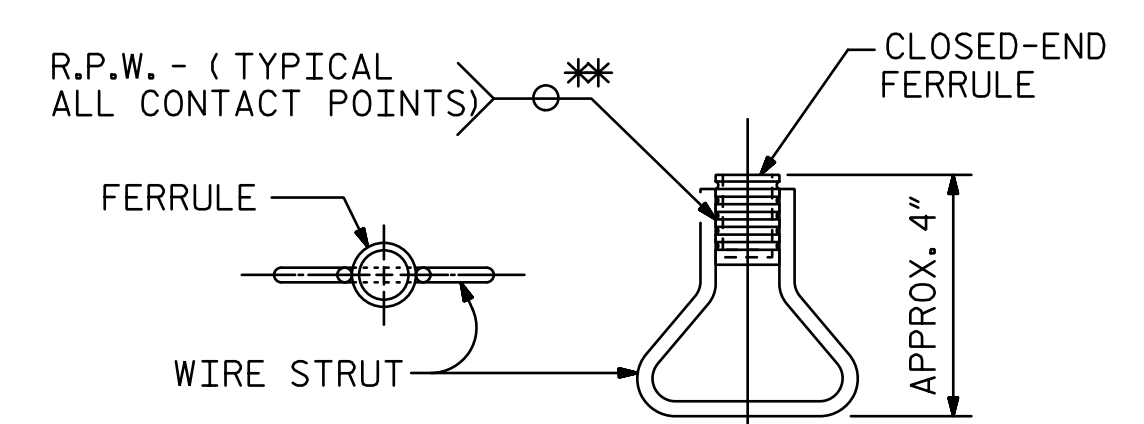
TYPE II - ELEVATION VIEW
COVER PLATE DETAILS



SECTION B - B

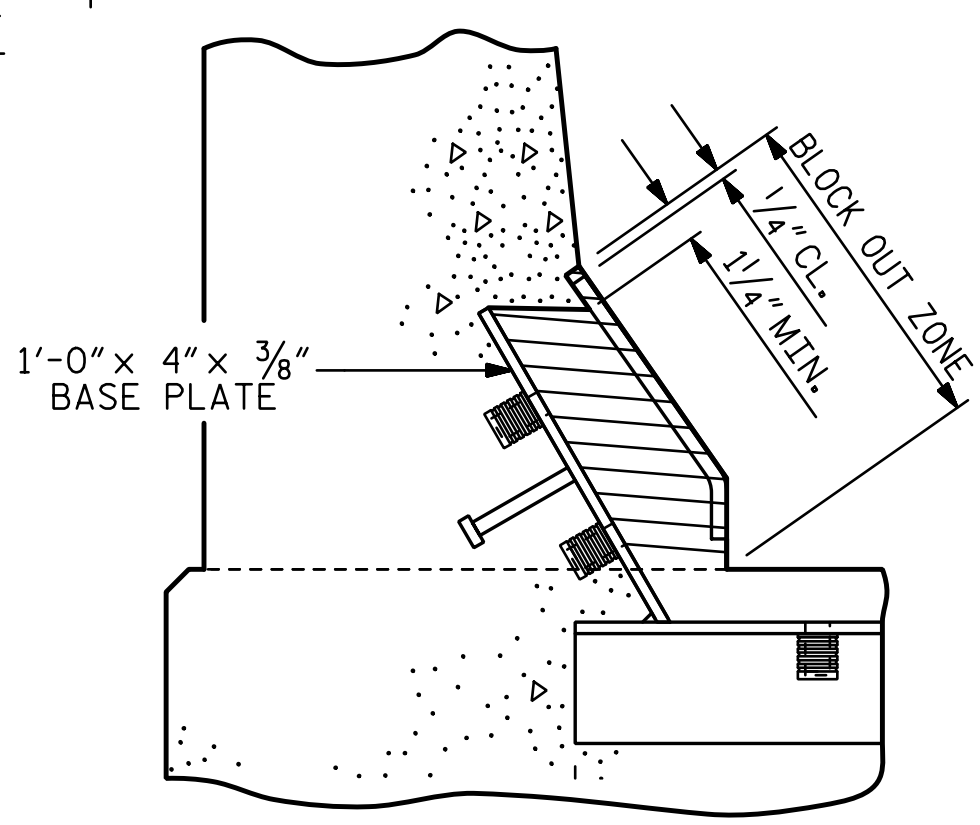


SECTION A - A



CONCRETE INSERT

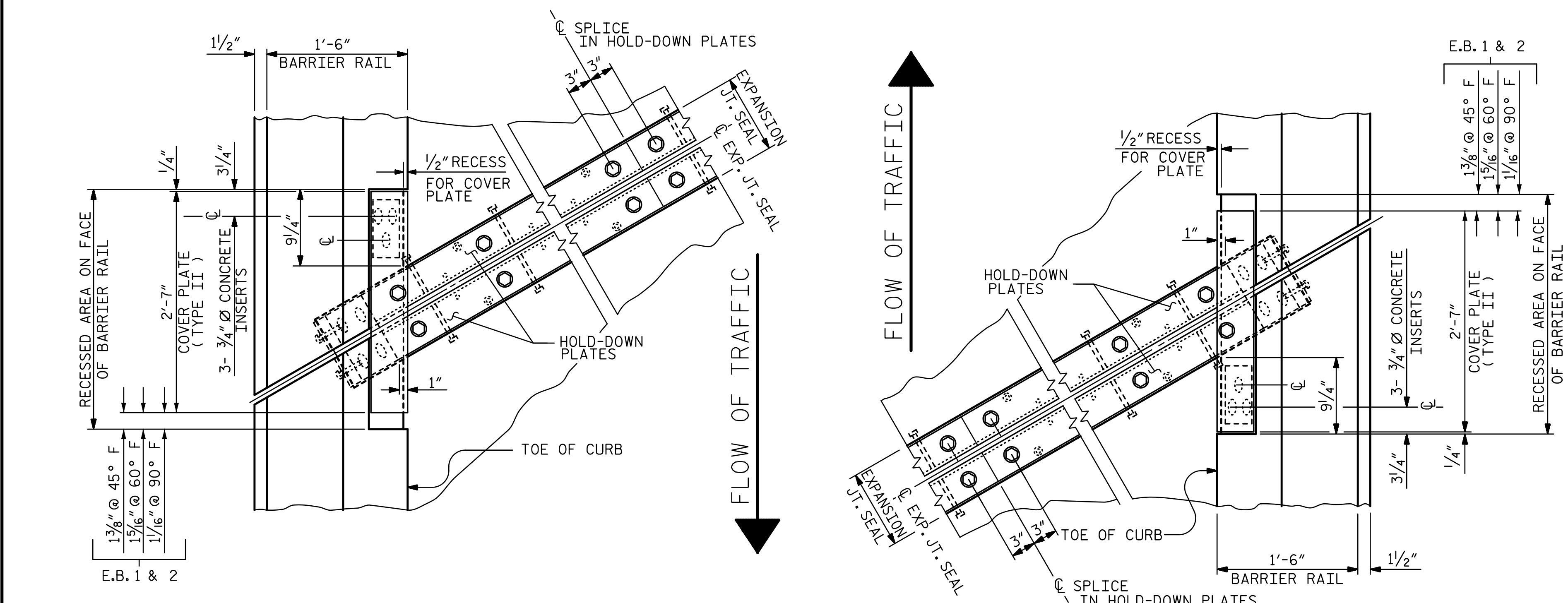
* EACH WELDED ATTACHMENT OF WIRE TO FERRULE SHALL DEVELOP THE TENSILE STRENGTH OF THE WIRE.



BLOCK OUT DETAIL

SEE "SECTION A - A" FOR OTHER DETAILS.

6/22/2017 3:16:23 PM R:\401_043_U4751_SMJ_JTOL_022_640201.dgn



PLAN OF EXPANSION JOINT SEAL

PROJECT NO. U-4751
NEW HANOVER COUNTY
 STATION: 38+94.20 -L-
 SHEET 2 OF 2

DRAWN BY: **VMW** DATE: **4-17**
 CHECKED BY: **AJP** DATE: **4-17**
 DESIGN ENGINEER OF RECORD: **T. TOWNSEND** DATE: **5-17**

DOCUMENT NOT CONSIDERED FINAL UNLESS ALL SIGNATURES COMPLETED		STATE OF NORTH CAROLINA DEPARTMENT OF TRANSPORTATION RALEIGH		SUPERSTRUCTURE EXPANSION JOINT SEAL DETAILS FOR BARRIER RAIL	SHEET NO. S1-22	
		REVISIONS				TOTAL SHEETS 36
		NO.	BY:			
1			3			
2			4			