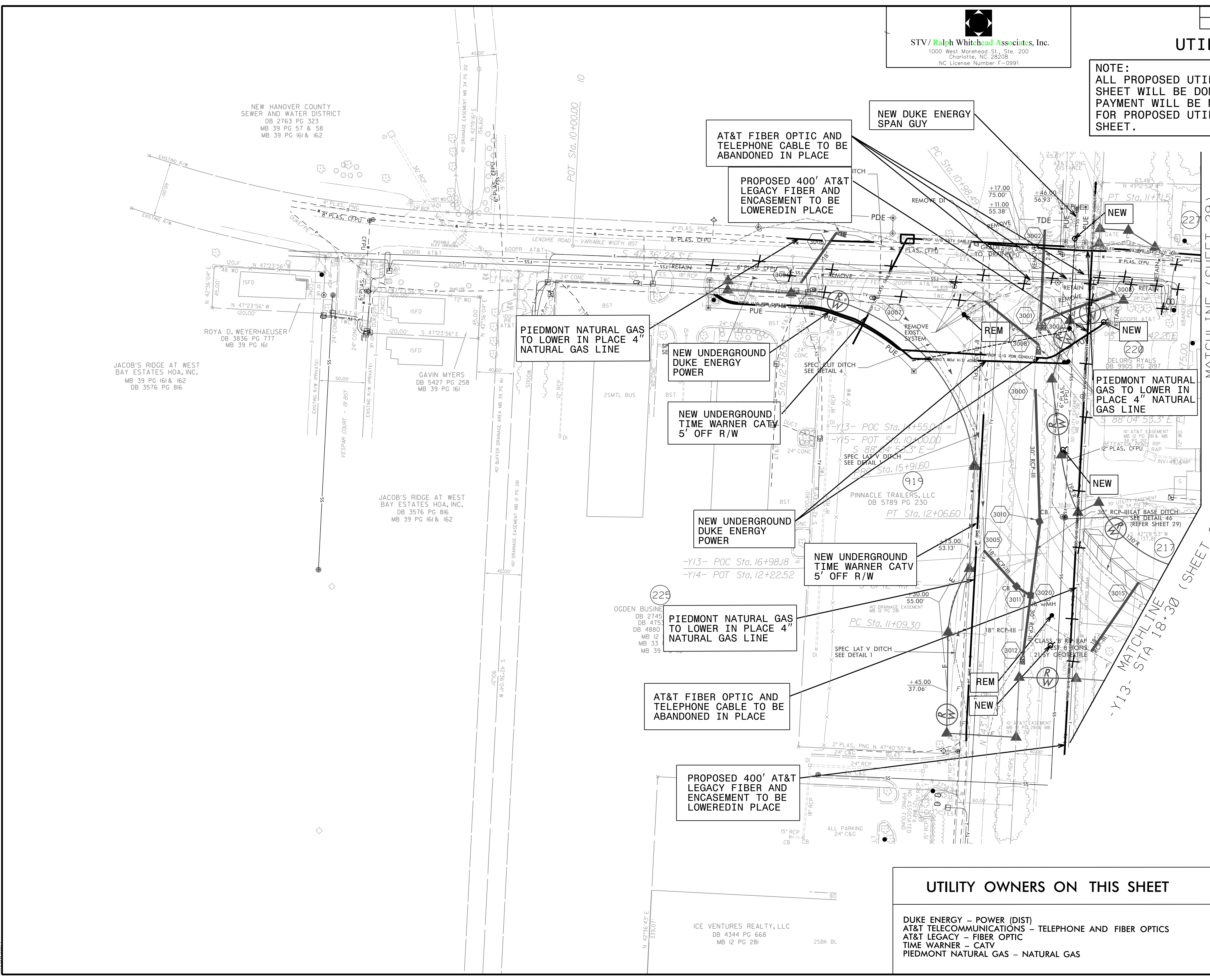


STV / Ralph Whitehead Associates, Inc.
 1000 West Morehead St., Ste. 200
 Charlotte, NC 28208
 NC License Number F-0991

UTILITIES BY OTHERS

NOTE:
 ALL PROPOSED UTILITY WORK SHOWN ON THIS SHEET WILL BE DONE BY OTHERS. NO PAYMENT WILL BE MADE TO THE CONTRACTOR FOR PROPOSED UTILITY WORK SHOWN ON THIS SHEET.



NAD 83 NRS 2007

UTILITY OWNERS ON THIS SHEET

- DUKE ENERGY - POWER (DIST)
- AT&T TELECOMMUNICATIONS - TELEPHONE AND FIBER OPTICS
- AT&T LEGACY - FIBER OPTIC
- TIME WARNER - CATV
- PIEDMONT NATURAL GAS - NATURAL GAS

PLANS PREPARED BY :
RK&K
 RUMMEL, KLEPPER & KAHL, LLP
 900 RIDGEFIELD DRIVE SUITE 350
 RALEIGH, NORTH CAROLINA 27609-3960
 NC LICENSE NO. F-0112 • (919) 878-9560

8/15/2017
 M:\projects\2011\1029_NCDOT_Utilities\Coord\H01_U-4751\Utilities\Rdy_Ut\Proj\U4751_Ut_Rdy\30_U028_psh.dgn
 RLW:scd