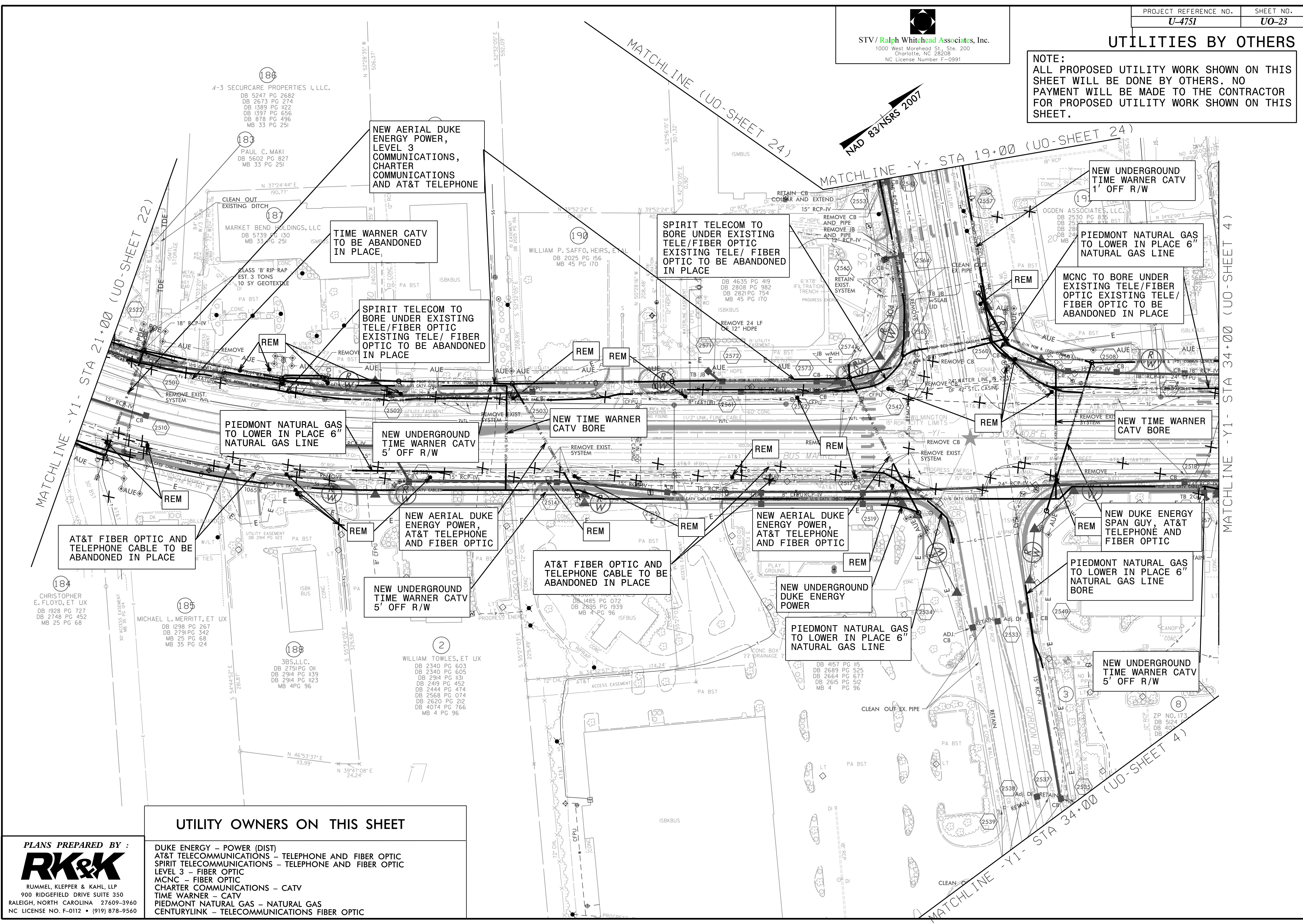


STV/Ralph Whitehead Associates, Inc.  
 1000 West Morehead St., Ste. 200  
 Charlotte, NC 28208  
 NC License Number F-0991

UTILITIES BY OTHERS

NOTE:  
 ALL PROPOSED UTILITY WORK SHOWN ON THIS SHEET WILL BE DONE BY OTHERS. NO PAYMENT WILL BE MADE TO THE CONTRACTOR FOR PROPOSED UTILITY WORK SHOWN ON THIS SHEET.



186  
 #3 SECURICARE PROPERTIES I, LLC.  
 DB 5247 PG 2682  
 DB 2673 PG 274  
 DB 1389 PG 1122  
 DB 1397 PG 656  
 DB 878 PG 496  
 MB 33 PG 251

183  
 PAUL C. MAKI  
 DB 5602 PG 827  
 MB 33 PG 251

187  
 MARKET BEND HOLDINGS, LLC  
 DB 5739 PG 130  
 MB 33 PG 251

NEW AERIAL DUKE ENERGY POWER, LEVEL 3 COMMUNICATIONS, CHARTER COMMUNICATIONS AND AT&T TELEPHONE

TIME WARNER CATV TO BE ABANDONED IN PLACE

SPIRIT TELECOM TO BORE UNDER EXISTING TELE/FIBER OPTIC EXISTING TELE/ FIBER OPTIC TO BE ABANDONED IN PLACE

SPIRIT TELECOM TO BORE UNDER EXISTING TELE/FIBER OPTIC EXISTING TELE/ FIBER OPTIC TO BE ABANDONED IN PLACE

NEW UNDERGROUND TIME WARNER CATV 1' OFF R/W

PIEDMONT NATURAL GAS TO LOWER IN PLACE 6" NATURAL GAS LINE

MCNC TO BORE UNDER EXISTING TELE/FIBER OPTIC EXISTING TELE/ FIBER OPTIC TO BE ABANDONED IN PLACE

PIEDMONT NATURAL GAS TO LOWER IN PLACE 6" NATURAL GAS LINE

NEW UNDERGROUND TIME WARNER CATV 5' OFF R/W

NEW TIME WARNER CATV BORE

NEW TIME WARNER CATV BORE

AT&T FIBER OPTIC AND TELEPHONE CABLE TO BE ABANDONED IN PLACE

NEW AERIAL DUKE ENERGY POWER, AT&T TELEPHONE AND FIBER OPTIC

AT&T FIBER OPTIC AND TELEPHONE CABLE TO BE ABANDONED IN PLACE

NEW AERIAL DUKE ENERGY POWER, AT&T TELEPHONE AND FIBER OPTIC

NEW DUKE ENERGY SPAN GUY, AT&T TELEPHONE AND FIBER OPTIC

184  
 CHRISTOPHER E. FLOYD, ET UX  
 DB 1928 PG 727  
 DB 2748 PG 452  
 MB 25 PG 68

185  
 MICHAEL L. MERRITT, ET UX  
 DB 1298 PG 267  
 DB 2791 PG 342  
 MB 25 PG 68  
 MB 35 PG 124

188  
 3BS, LLC.  
 DB 2751 PG 011  
 DB 2914 PG 139  
 DB 2914 PG 123  
 MB 4 PG 96

2  
 WILLIAM TOWLES, ET UX  
 DB 2340 PG 603  
 DB 2340 PG 605  
 DB 2914 PG 131  
 DB 2419 PG 452  
 DB 2444 PG 474  
 DB 2568 PG 074  
 DB 2620 PG 212  
 DB 4074 PG 766  
 MB 4 PG 96

PIEDMONT NATURAL GAS TO LOWER IN PLACE 6" NATURAL GAS LINE

NEW UNDERGROUND DUKE ENERGY POWER

PIEDMONT NATURAL GAS TO LOWER IN PLACE 6" NATURAL GAS LINE BORE

NEW UNDERGROUND TIME WARNER CATV 5' OFF R/W

UTILITY OWNERS ON THIS SHEET

- DUKE ENERGY - POWER (DIST)
- AT&T TELECOMMUNICATIONS - TELEPHONE AND FIBER OPTIC
- SPIRIT TELECOMMUNICATIONS - TELEPHONE AND FIBER OPTIC
- LEVEL 3 - FIBER OPTIC
- MCNC - FIBER OPTIC
- CHARTER COMMUNICATIONS - CATV
- TIME WARNER - CATV
- PIEDMONT NATURAL GAS - NATURAL GAS
- CENTURYLINK - TELECOMMUNICATIONS FIBER OPTIC

PLANS PREPARED BY :  
**RK&K**  
 RUMMEL, KLEPPER & KAHL, LLP  
 900 RIDGEFIELD DRIVE SUITE 350  
 RALEIGH, NORTH CAROLINA 27609-3960  
 NC LICENSE NO. F-0112 • (919) 878-9560