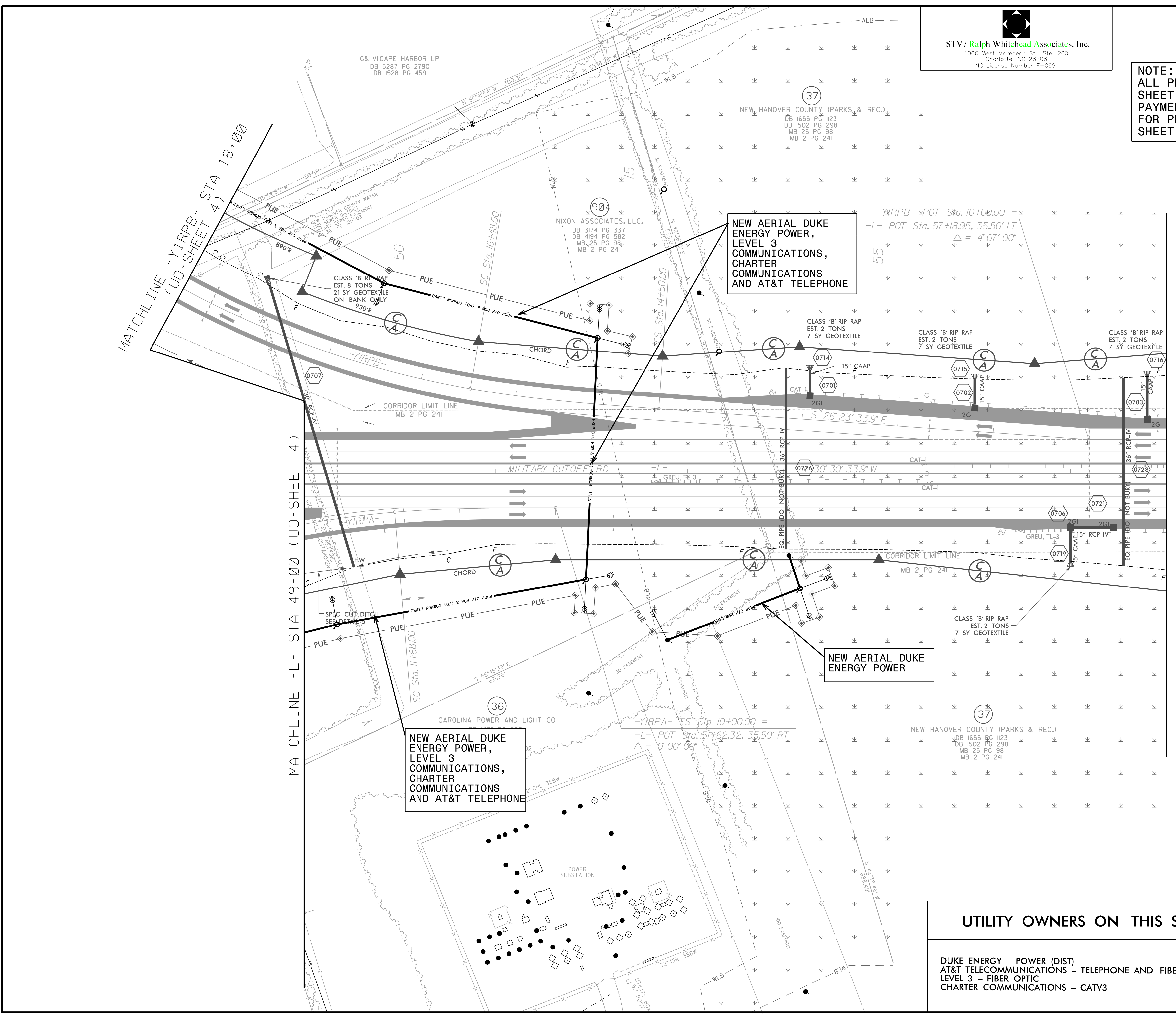
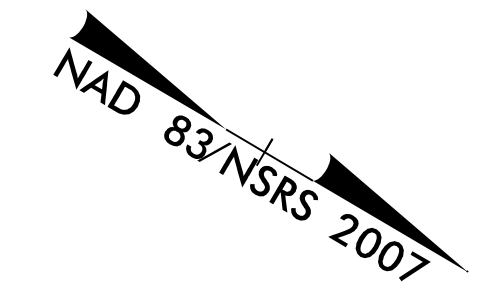


STV / Ralph Whitehead Associates, Inc.
 1000 West Morehead St., Ste. 200
 Charlotte, NC 28208
 NC License Number F-0991

UTILITIES BY OTHERS

NOTE:
 ALL PROPOSED UTILITY WORK SHOWN ON THIS SHEET WILL BE DONE BY OTHERS. NO PAYMENT WILL BE MADE TO THE CONTRACTOR FOR PROPOSED UTILITY WORK SHOWN ON THIS SHEET.



NEW AERIAL DUKE ENERGY POWER, LEVEL 3 COMMUNICATIONS, CHARTER COMMUNICATIONS AND AT&T TELEPHONE

NEW AERIAL DUKE ENERGY POWER

NEW AERIAL DUKE ENERGY POWER, LEVEL 3 COMMUNICATIONS, CHARTER COMMUNICATIONS AND AT&T TELEPHONE

UTILITY OWNERS ON THIS SHEET

- DUKE ENERGY - POWER (DIST)
- AT&T TELECOMMUNICATIONS - TELEPHONE AND FIBER OPTICS
- LEVEL 3 - FIBER OPTIC
- CHARTER COMMUNICATIONS - CATV3

PLANS PREPARED BY :

RUMMEL, KLEPPER & KAHL, LLP
 900 RIDGEMOUNT DRIVE SUITE 350
 RALEIGH, NORTH CAROLINA 27609-3960
 NC LICENSE NO. F-0112 • (919) 878-9560