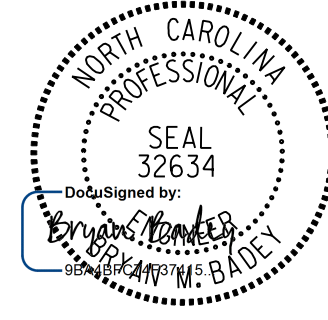


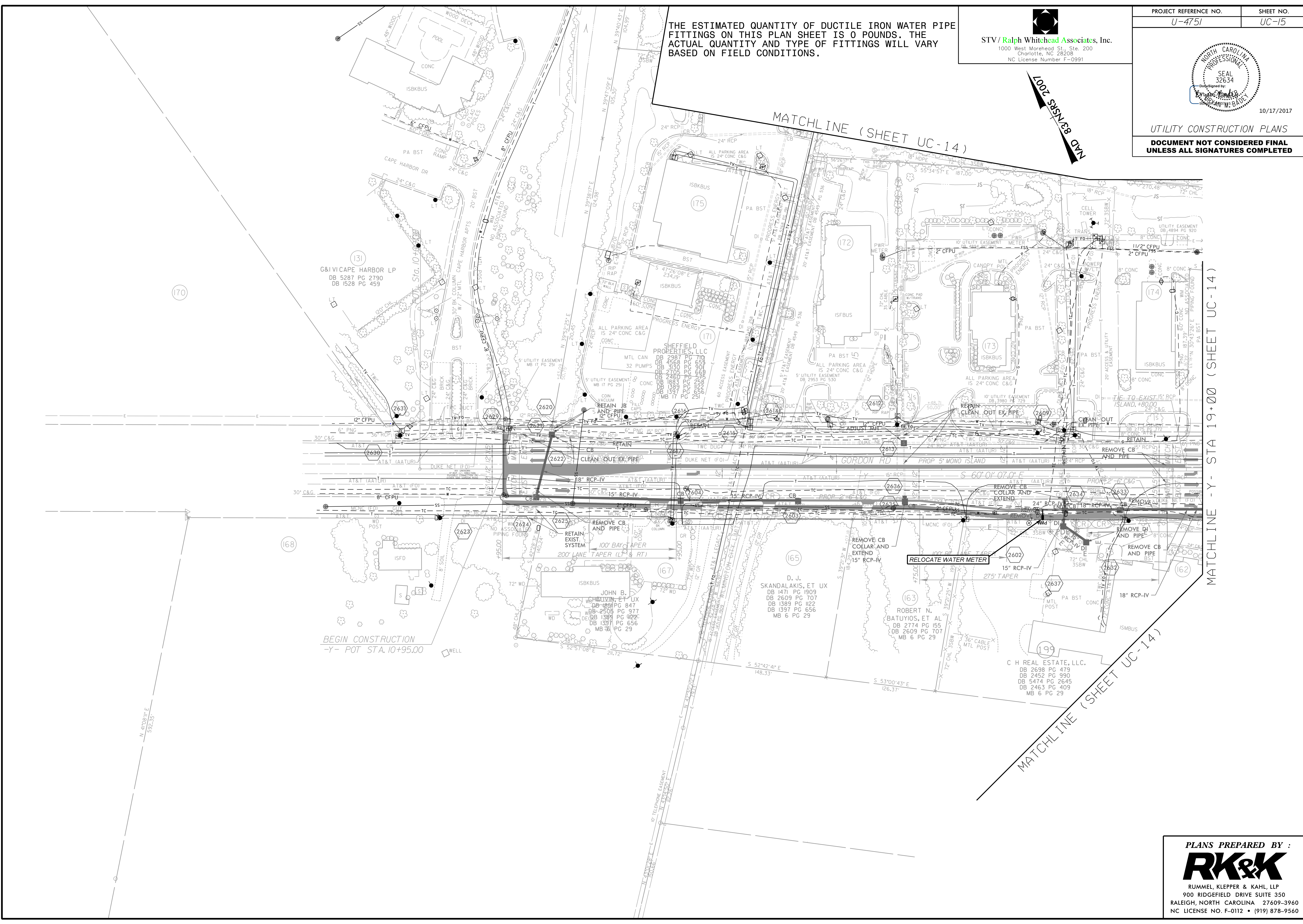
THE ESTIMATED QUANTITY OF DUCTILE IRON WATER PIPE FITTINGS ON THIS PLAN SHEET IS 0 POUNDS. THE ACTUAL QUANTITY AND TYPE OF FITTINGS WILL VARY BASED ON FIELD CONDITIONS.

  
**STV/Ralph Whitehead Associates, Inc.**  
 1000 West Morehead St., Ste. 200  
 Charlotte, NC 28208  
 NC License Number F-0991

|                                 |                    |
|---------------------------------|--------------------|
| PROJECT REFERENCE NO.<br>U-4751 | SHEET NO.<br>UC-15 |
|---------------------------------|--------------------|


  
 SEAL 32634  
 Eric Thomas  
 PROFESSIONAL ENGINEER  
 10/17/2017

UTILITY CONSTRUCTION PLANS  
**DOCUMENT NOT CONSIDERED FINAL  
 UNLESS ALL SIGNATURES COMPLETED**



MATCHLINE - Y - STA 19+00 (SHEET UC-14)

MATCHLINE (SHEET UC-14)

**PLANS PREPARED BY :**  
  
**RUMMEL, KLEPPER & KAHL, LLP**  
 900 RIDGEFIELD DRIVE SUITE 350  
 RALEIGH, NORTH CAROLINA 27609-3960  
 NC LICENSE NO. F-0112 • (919) 878-9560