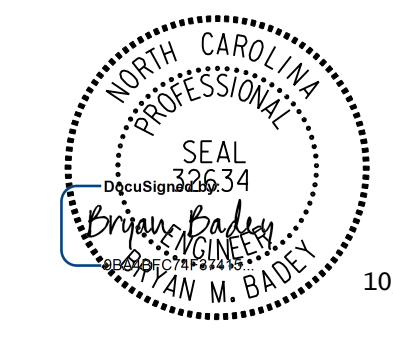


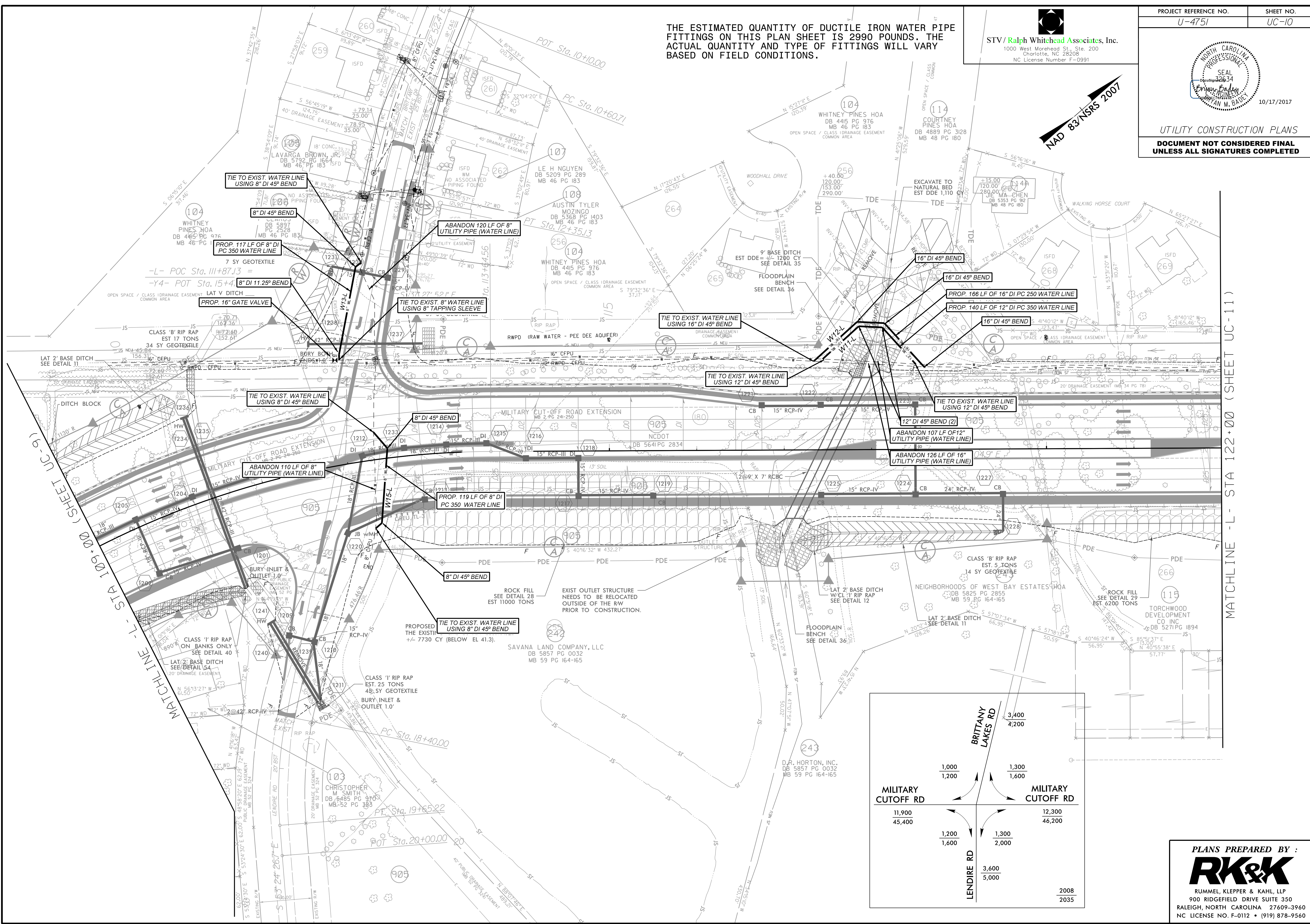
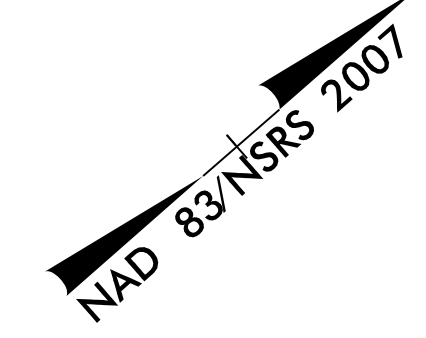
THE ESTIMATED QUANTITY OF DUCTILE IRON WATER PIPE FITTINGS ON THIS PLAN SHEET IS 2990 POUNDS. THE ACTUAL QUANTITY AND TYPE OF FITTINGS WILL VARY BASED ON FIELD CONDITIONS.

STV/Ralph Whitehead Associates, Inc.  
1000 West Morehead St., Ste. 200  
Charlotte, NC 28208  
NC License Number F-0991

PROJECT REFERENCE NO. U-4751 SHEET NO. UC-10

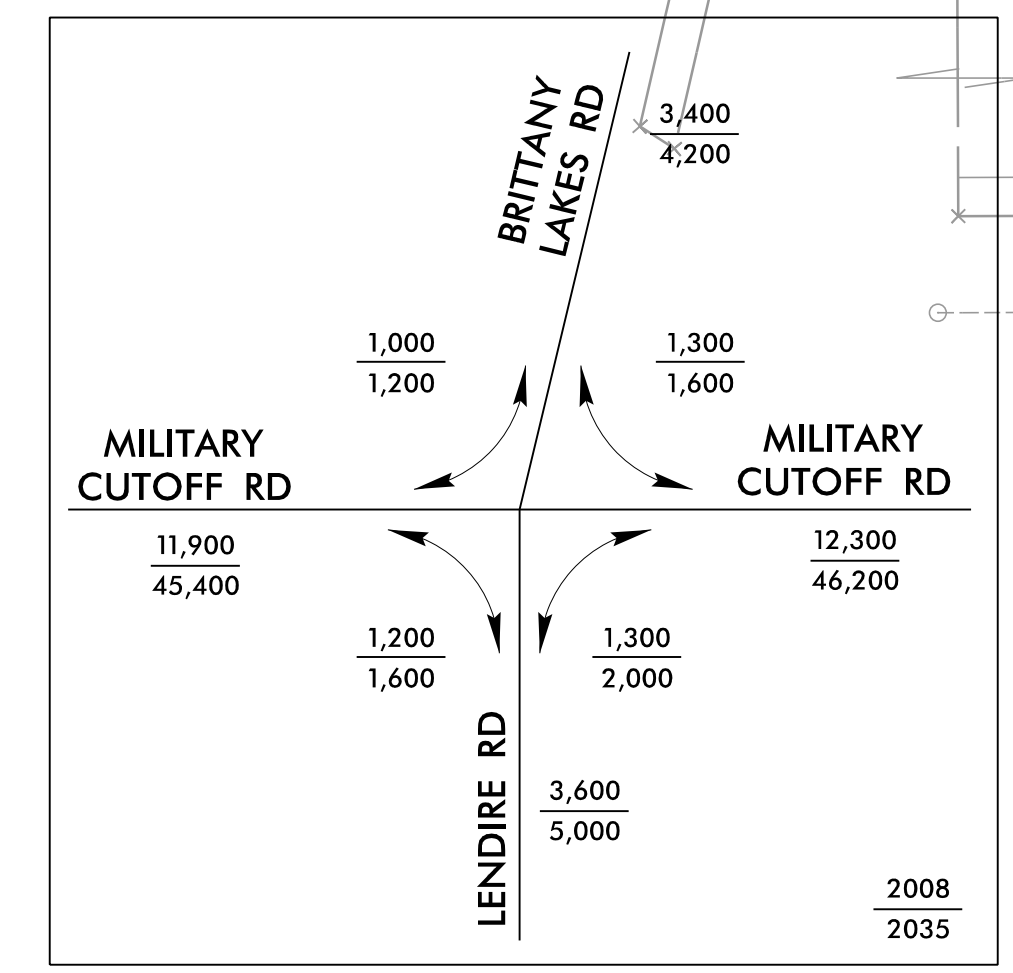


UTILITY CONSTRUCTION PLANS  
DOCUMENT NOT CONSIDERED FINAL  
UNLESS ALL SIGNATURES COMPLETED



MATCHLINE - L - STA 122+00 (SHEET UC-9)

MATCHLINE - L - STA 122+00 (SHEET UC-11)



PLANS PREPARED BY:  
**RK&K**  
RUMMEL, KLEPPER & KAHL, LLP  
900 RIDGEFIELD DRIVE SUITE 350  
RALEIGH, NORTH CAROLINA 27609-3960  
NC LICENSE NO. F-0112 • (919) 878-9560