

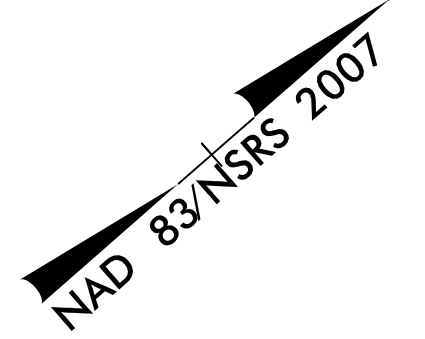
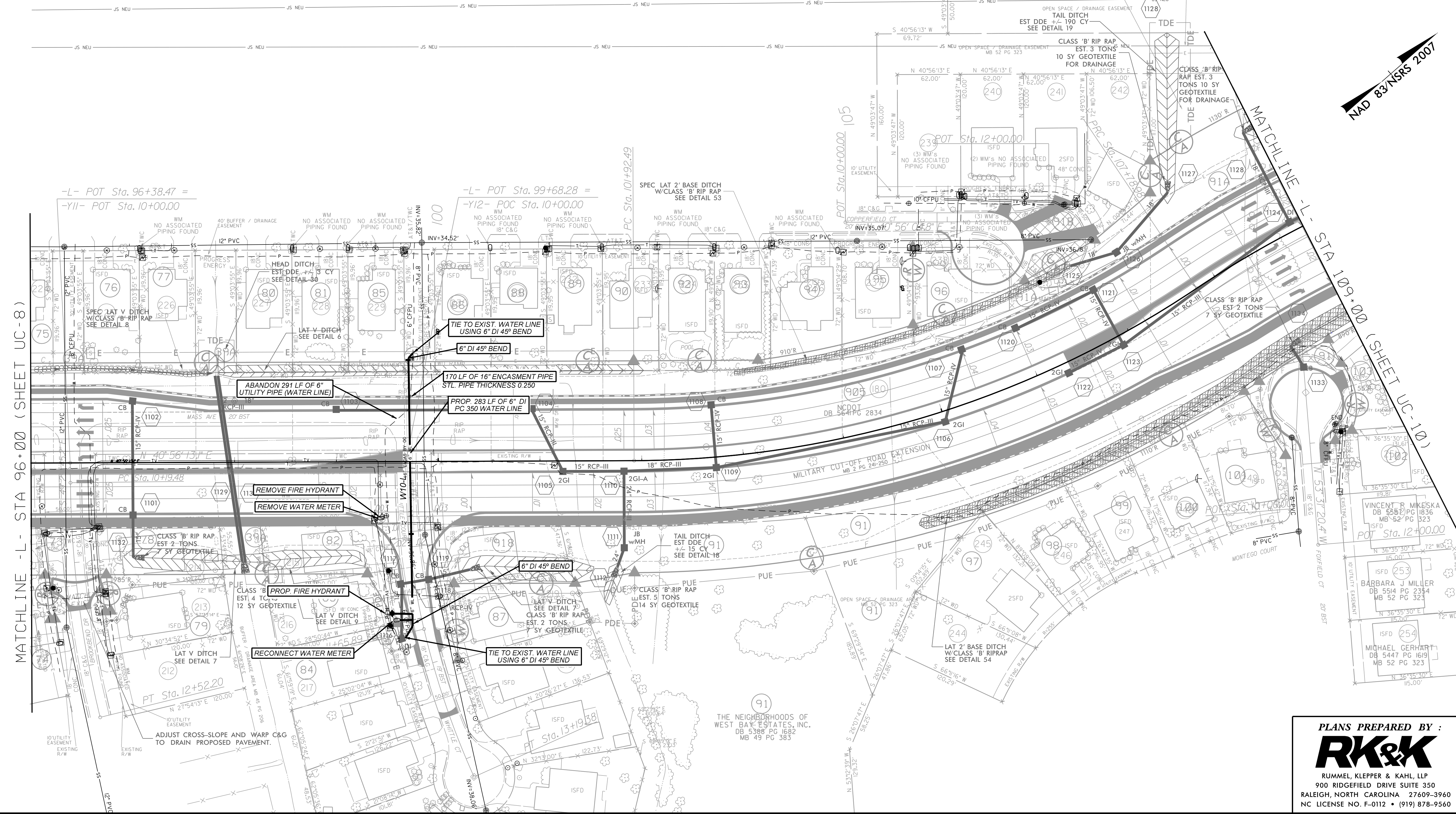
10/17/2017

UTILITY CONSTRUCTION PLANS

DOCUMENT NOT CONSIDERED FINAL  
UNLESS ALL SIGNATURES COMPLETED

THE ESTIMATED QUANTITY OF DUCTILE IRON WATER PIPE FITTINGS ON THIS PLAN SHEET IS 300 POUNDS. THE ACTUAL QUANTITY AND TYPE OF FITTINGS WILL VARY BASED ON FIELD CONDITIONS.

- |  |  |  |  |   |  |     |
|--|--|--|--|---|--|-----|
| JOY B. GASKINS<br>DB 5696 PG 1672<br>MB 45 PG 206              | EDWARD E. BENTON, SR.<br>DB 4930 PG 2279<br>MB 45 PG 206 | NOAH S. BOATRIGHT<br>DB 5127 PG 1126<br>MB 47 PG 206 | FRANKLIN H. PHILLIPS III<br>DB 5379 PG 2473<br>MB 46 PG 248                  | JEREMY AKIN<br>DB 5444 PG 1484<br>MB 52 PG 323          | AMERICAN RESIDENTIAL LEASING COMPANY, LLC<br>DB 5751 PG 2050<br>MB 52 PG 323 | 91A |
| RY RADER<br>INDENRICH, WIDOW<br>DB 5718 PG 978<br>MB 45 PG 206 | MARY ELLEN DOSS<br>DB 4895 PG 386<br>MB 44 PG 194        | KENNETH R. CURLEY<br>DB 4515 PG 745<br>MB 44 PG 194  | MATTHEW M. HAYDEN<br>DB 4701 PG 665<br>MB 46 PG 248                          | BONITA ROWLEY, WIDOW<br>DB 5450 PG 1884<br>MB 52 PG 323 | TIMOTHY L. ALLENSWORTH<br>DB 5478 PG 375<br>MB 52 PG 323                     | 91B |
| BERLY D. MALDONADO<br>DB 5811 PG 1422<br>MB 46 PG 248          | DANA L. BRITTLE<br>DB 4768 PG 861<br>MB 46 PG 248        | ROBERT HARRISON<br>DB 5490 PG 2146<br>MB 46 PG 248   | AMERICAN RESIDENTIAL LEASING COMPANY, LLC<br>DB 5786 PG 1180<br>MB 52 PG 323 | DERRICK SAUL<br>DB 5452 PG 1614<br>MB 52 PG 323         | SANTOS MURGUIA III<br>DB 5888 PG 2965<br>MB 52 PG 323                        | 39A |
| ROBERT STROUD JR.<br>DB 5207 PG 1831<br>MB 46 PG 248           | JOYCE E. KAYLOR<br>DB 5490 PG 2146<br>MB 46 PG 248       | WESLEY R. SLAYTON<br>DB 5181 PG 458<br>MB 46 PG 248  | DANIEL W. PATTERSON<br>DB 4942 PG 1864<br>MB 46 PG 248                       | CHARLES S. LINDSEY<br>DB 5468 PG 2497<br>MB 52 PG 323   | LESLIE HOWARD PARRIS<br>DB 5762 PG 553<br>MB 52 PG 323                       |     |
| ILLY M. BANKS<br>DB 5716 PG 38<br>MB 46 PG 248                 | CHERIHUNT STAMM<br>DB 5655 PG 187<br>MB 45 PG 206        | THOMAS P. MACNEISH<br>DB 4395 PG 827<br>MB 45 PG 206 | JOSEPH M. VADINO<br>DB 4872 PG 698<br>MB 47 PG 380                           | CARRIE L. CHEATHAM<br>DB 5472 PG 678<br>MB 52 PG 323    | CHRISTOPHER M. SMITH<br>DB 5485 PG 970<br>MB 52 PG 323                       |     |
|  |  |  |  |   | NCDOT<br>DB 5641 PG 2834   | 918 |



PLANS PREPARED BY:  
**RK&K**  
RUMMEL, KLEPPER & KAHL, LLP  
900 RIDGEFIELD DRIVE SUITE 350  
RALEIGH, NORTH CAROLINA 27609-3960  
NC LICENSE NO. F-0112 • (919) 878-9560