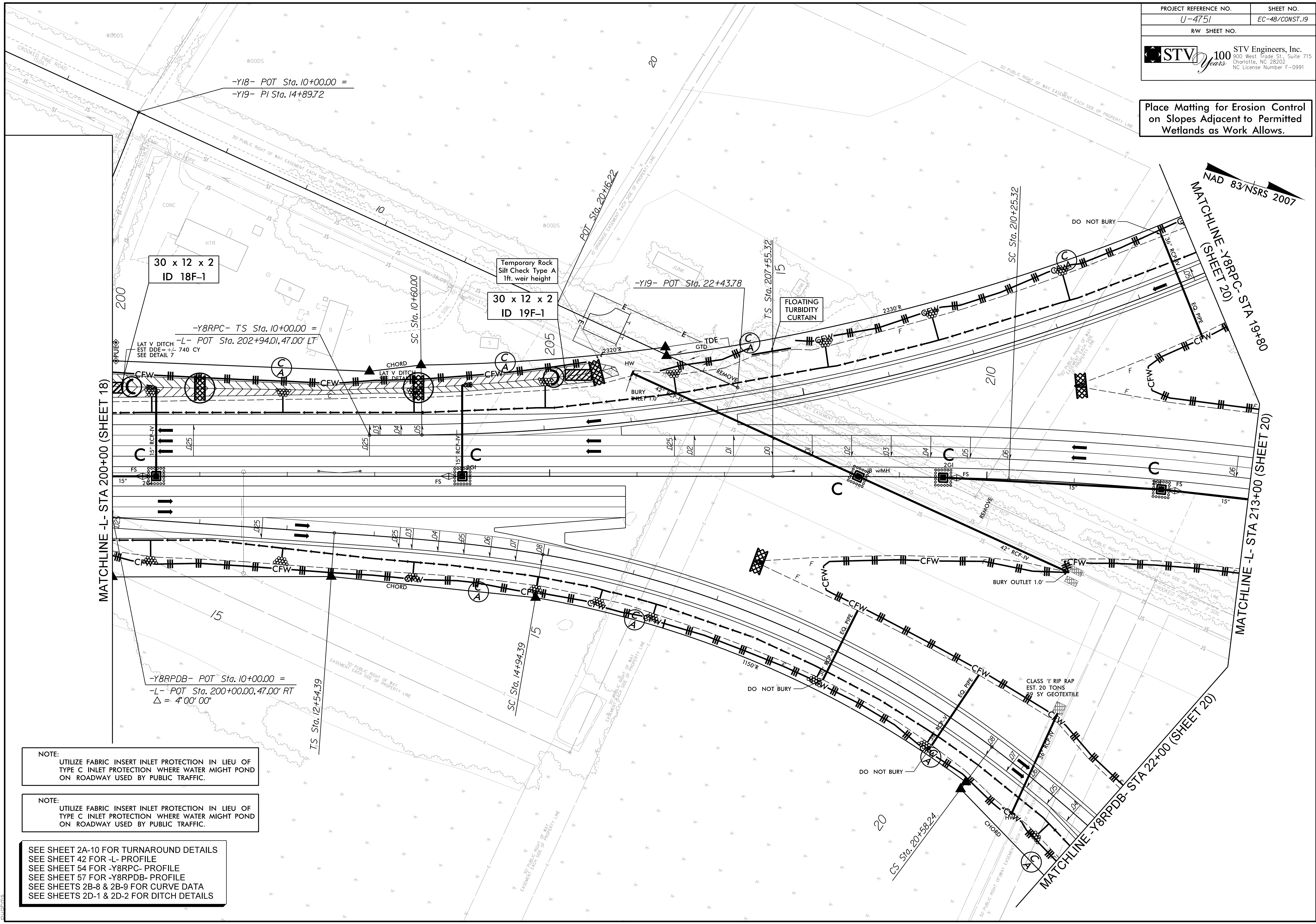


Place Matting for Erosion Control on Slopes Adjacent to Permitted Wetlands as Work Allows.



NOTE:  
UTILIZE FABRIC INSERT INLET PROTECTION IN LIEU OF TYPE C INLET PROTECTION WHERE WATER MIGHT POND ON ROADWAY USED BY PUBLIC TRAFFIC.

NOTE:  
UTILIZE FABRIC INSERT INLET PROTECTION IN LIEU OF TYPE C INLET PROTECTION WHERE WATER MIGHT POND ON ROADWAY USED BY PUBLIC TRAFFIC.

SEE SHEET 2A-10 FOR TURNAROUND DETAILS  
 SEE SHEET 42 FOR -L- PROFILE  
 SEE SHEET 54 FOR -Y8RPC- PROFILE  
 SEE SHEET 57 FOR -Y8RPDB- PROFILE  
 SEE SHEETS 2B-8 & 2B-9 FOR CURVE DATA  
 SEE SHEETS 2D-1 & 2D-2 FOR DITCH DETAILS

6/2/2017  
 R:\Environmental\Design\U4751\EC\_psh48.dgn  
 P:\chims