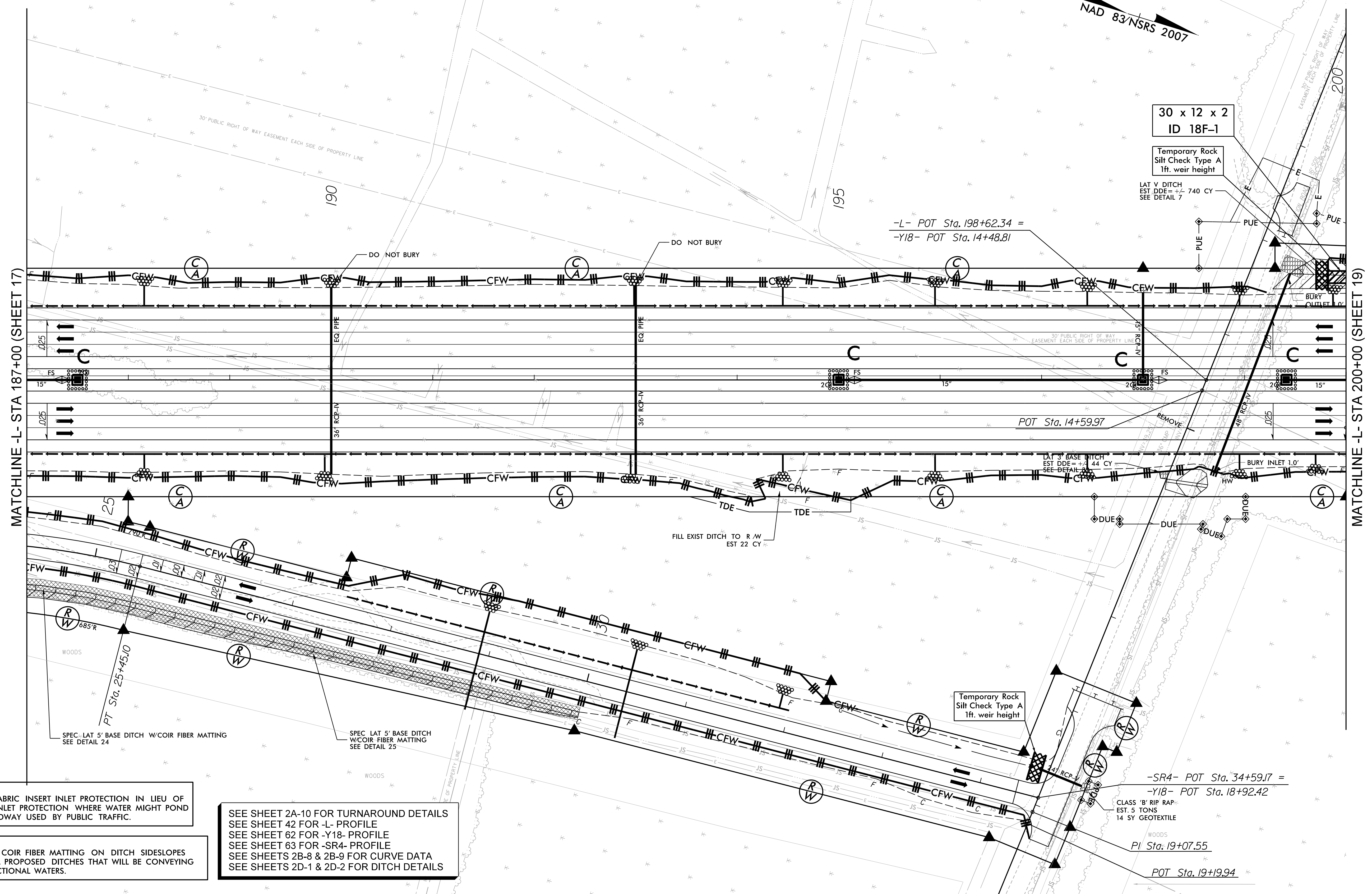


Place Matting for Erosion Control on Slopes Adjacent to Permitted Wetlands as Work Allows.

NAD 83/NSRS 2007



MATCHLINE -L- STA 187+00 (SHEET 17)

MATCHLINE -L- STA 200+00 (SHEET 19)

NOTE:
 UTILIZE FABRIC INSERT INLET PROTECTION IN LIEU OF TYPE C INLET PROTECTION WHERE WATER MIGHT POND ON ROADWAY USED BY PUBLIC TRAFFIC.

NOTE:
 INSTALL COIR FIBER MATTING ON DITCH SIDESLOPES FOR ALL PROPOSED DITCHES THAT WILL BE CONVEYING JURISDICTIONAL WATERS.

SEE SHEET 2A-10 FOR TURNAROUND DETAILS
 SEE SHEET 42 FOR -L- PROFILE
 SEE SHEET 62 FOR -Y18- PROFILE
 SEE SHEET 63 FOR -SR4- PROFILE
 SEE SHEETS 2B-8 & 2B-9 FOR CURVE DATA
 SEE SHEETS 2D-1 & 2D-2 FOR DITCH DETAILS

30 x 12 x 2
 ID 18F-1

Temporary Rock
 Silt Check Type A
 1ft. weir height

LAT V DITCH
 EST DDE = +/- 740 CY
 SEE DETAIL 7

-L- POT Sta. 198+62.34 =
 -Y18- POT Sta. 14+48.81

POT Sta. 14+59.97

LAT 3' BASE DITCH
 EST DDE = +/- 44 CY
 SEE DETAIL 7

FILL EXIST DITCH TO R.W.
 EST 22 CY

Temporary Rock
 Silt Check Type A
 1ft. weir height

-SR4- POT Sta. 34+59.7 =
 -Y18- POT Sta. 18+92.42

CLASS 'B' RIP RAP
 EST. 5 TONS
 14 SY GEOTEXTILE

PI STA. 19+07.55

POT Sta. 19+19.94

6/2/2017
 R:\Environmental\Design\U4751\EC_ipsh47.dgn