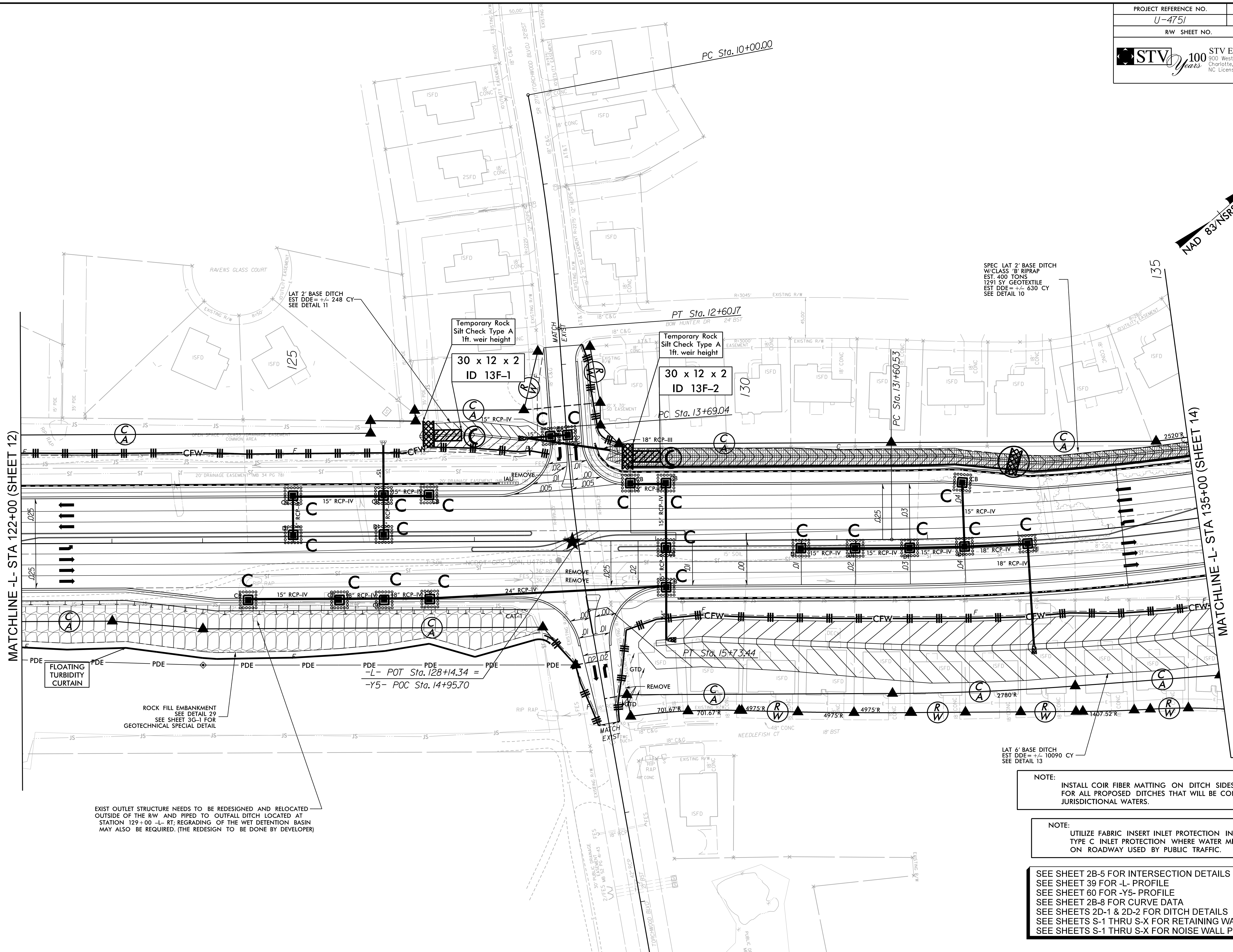


NAD 83/NSRS 2007



MATCHLINE -L- STA 122+00 (SHEET 12)

MATCHLINE -L- STA 135+00 (SHEET 14)

FLOATING TURBIDITY CURTAIN

ROCK FILL EMBANKMENT
SEE DETAIL 29
SEE SHEET 3G-1 FOR
GEOTECHNICAL SPECIAL DETAIL

EXIST OUTLET STRUCTURE NEEDS TO BE REDESIGNED AND RELOCATED
OUTSIDE OF THE RW AND PIPED TO OUTFALL DITCH LOCATED AT
STATION 129+00 -L- RT; REGRADING OF THE WET DETENTION BASIN
MAY ALSO BE REQUIRED. (THE REDESIGN TO BE DONE BY DESIGNER)

SPEC LAT 2' BASE DITCH
W/CLASS 'B' RIPRAP
EST. 400 TONS
1291 SY GEOTEXTILE
EST DDE = +/- 630 CY
SEE DETAIL 10

LAT 6' BASE DITCH
EST DDE = +/- 10090 CY
SEE DETAIL 13

NOTE:
INSTALL COIR FIBER MATTING ON DITCH SIDESLOPES
FOR ALL PROPOSED DITCHES THAT WILL BE CONVEYING
JURISDICTIONAL WATERS.

NOTE:
UTILIZE FABRIC INSERT INLET PROTECTION IN LIEU OF
TYPE C INLET PROTECTION WHERE WATER MIGHT POND
ON ROADWAY USED BY PUBLIC TRAFFIC.

SEE SHEET 2B-5 FOR INTERSECTION DETAILS
SEE SHEET 39 FOR -L- PROFILE
SEE SHEET 60 FOR -Y5- PROFILE
SEE SHEET 2B-8 FOR CURVE DATA
SEE SHEETS 2D-1 & 2D-2 FOR DITCH DETAILS
SEE SHEETS S-1 THRU S-X FOR RETAINING WALL PLANS
SEE SHEETS S-1 THRU S-X FOR NOISE WALL PLANS

6/2/2017
R:\Environmental\Design\U4751\EC_psh42.dgn
PUSHING