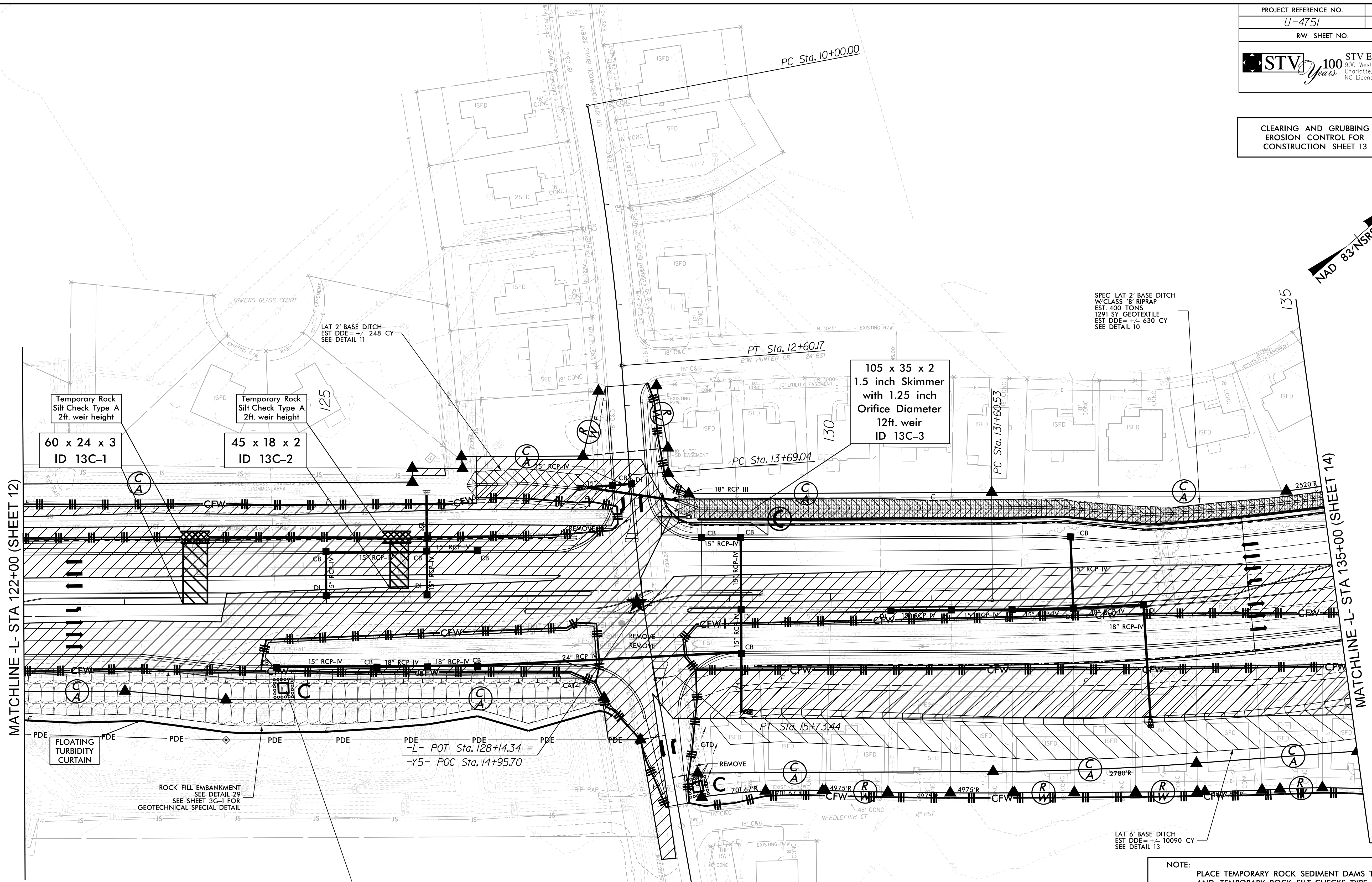
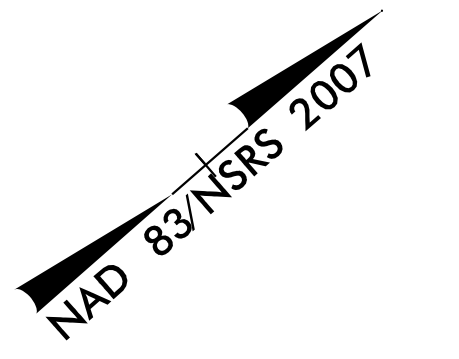


**CLEARING AND GRUBBING  
 EROSION CONTROL FOR  
 CONSTRUCTION SHEET 13**



EXIST OUTLET STRUCTURE NEEDS TO BE REDESIGNED AND RELOCATED OUTSIDE OF THE RW AND PIPED TO OUTFALL DITCH LOCATED AT STATION 129+00 -L- RT; REGRADING OF THE WET DETENTION BASIN MAY ALSO BE REQUIRED. (THE REDESIGN TO BE DONE BY DEVELOPER)

INSTALL PIPE(S) IN JURISDICTIONAL AREAS WITHOUT IMPACTING STREAM UNTIL AREA STABILIZED AND ACCORDING TO NCDOT BEST MANAGEMENT PRACTICES FOR CONSTRUCTION AND MAINTENANCE ACTIVITIES MANUAL.

 ENVIRONMENTALLY SENSITIVE AREA  
 SEE PROJECT SPECIAL PROVISIONS

NOTE:  
 PLACE TEMPORARY ROCK SEDIMENT DAMS TYPE - B AND TEMPORARY ROCK SILT CHECKS TYPE - A AT DRAINAGE OUTLETS.

NOTE:  
 PERIMETER EROSION CONTROL MEASURES SHALL BE INSTALLED DURING CLEARING AND GRUBBING PHASE.

SEE SHEET 2B-5 FOR INTERSECTION DETAILS  
 SEE SHEET 39 FOR -L- PROFILE  
 SEE SHEET 60 FOR -Y5- PROFILE  
 SEE SHEET 2B-8 FOR CURVE DATA  
 SEE SHEETS 2D-1 & 2D-2 FOR DITCH DETAILS  
 SEE SHEETS S-1 THRU S-X FOR RETAINING WALL PLANS  
 SEE SHEETS S-1 THRU S-X FOR NOISE WALL PLANS