

5/28/17

| DITCH LEGEND |       |
|--------------|-------|
| LEFT DITCH   | ----- |
| RIGHT DITCH  | ----- |

**STV** 100 Years  
 STV Engineers, Inc.  
 900 West Trade St., Suite 715  
 Charlotte, NC 28202  
 NC License Number F-0991

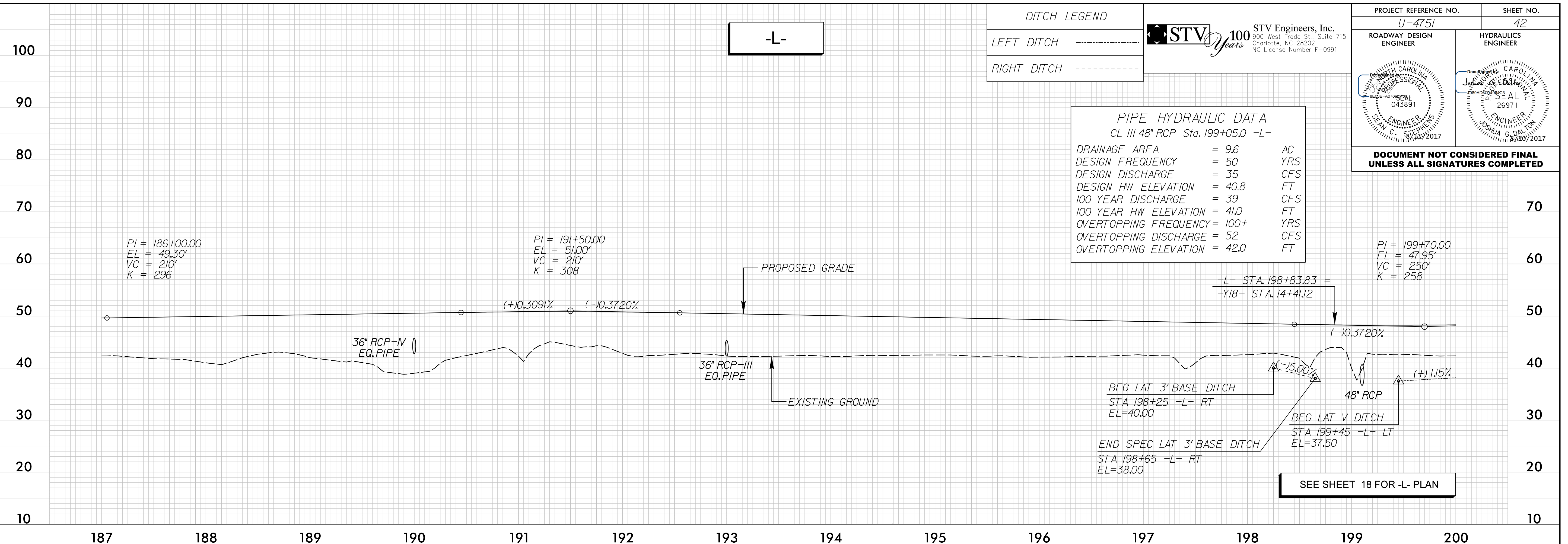
|  |  |
|--|--|
| PROJECT REFERENCE NO.<br>U-4751                    | SHEET NO.<br>42                                |
| ROADWAY DESIGN ENGINEER<br><i>Joshua G. Dalton</i> | HYDRAULICS ENGINEER<br><i>Joshua G. Dalton</i> |

Professional Engineer Seal: JOSHUA G. DALTON, No. 26971, State of North Carolina, Exp. 12/31/2017

**PIPE HYDRAULIC DATA**  
 CL III 48" RCP Sta. 199+05.0 -L-

|                       |        |     |
|-----------------------|--------|-----|
| DRAINAGE AREA         | = 9.6  | AC  |
| DESIGN FREQUENCY      | = 50   | YRS |
| DESIGN DISCHARGE      | = 35   | CFS |
| DESIGN HW ELEVATION   | = 40.8 | FT  |
| 100 YEAR DISCHARGE    | = 39   | CFS |
| 100 YEAR HW ELEVATION | = 41.0 | FT  |
| OVERTOPPING FREQUENCY | = 100+ | YRS |
| OVERTOPPING DISCHARGE | = 52   | CFS |
| OVERTOPPING ELEVATION | = 42.0 | FT  |

**DOCUMENT NOT CONSIDERED FINAL UNLESS ALL SIGNATURES COMPLETED**



T:\4751\2017\Roadway\Proj\SH\U4751\_LRDY\_psh42.plt.dgn

| DITCH LEGEND |       |
|--------------|-------|
| LEFT DITCH   | ----- |
| RIGHT DITCH  | ----- |

**PIPE HYDRAULIC DATA**  
 CL III 42" RCP Sta. 208+53.2 -L-

|                       |        |     |
|-----------------------|--------|-----|
| DRAINAGE AREA         | = 3.0  | AC  |
| DESIGN FREQUENCY      | = 50   | YRS |
| DESIGN DISCHARGE      | = 17   | CFS |
| DESIGN HW ELEVATION   | = 40.7 | FT  |
| 100 YEAR DISCHARGE    | = 18   | CFS |
| 100 YEAR HW ELEVATION | = 40.9 | FT  |
| OVERTOPPING FREQUENCY | = 100+ | YRS |
| OVERTOPPING DISCHARGE | = 24   | CFS |
| OVERTOPPING ELEVATION | = 42.0 | FT  |

