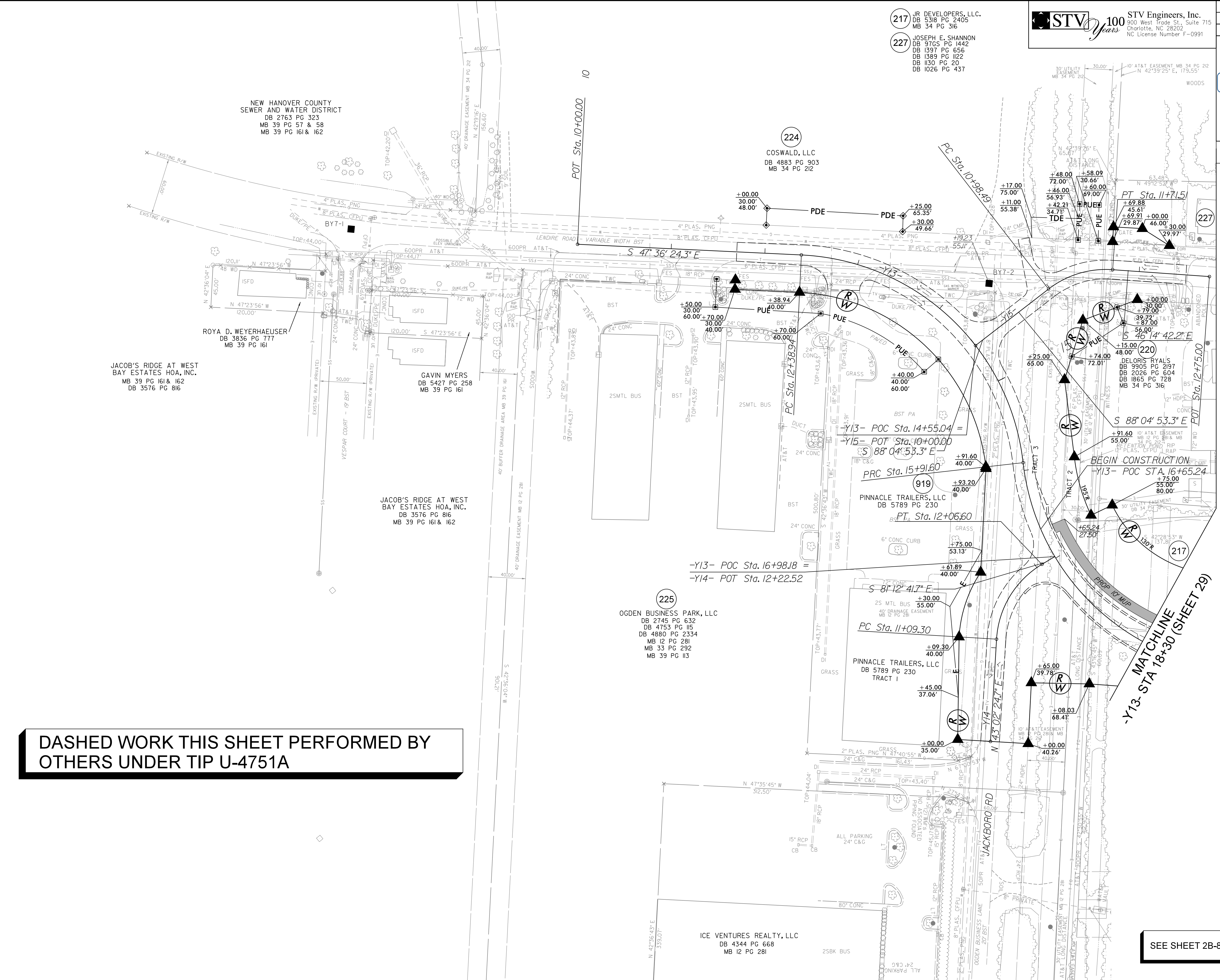


PROJECT REFERENCE NO. U-4751		SHEET NO. 30	
RW SHEET NO.		HYDRAULICS ENGINEER	
ROADWAY DESIGN ENGINEER	SEAL 043891 STEPHENS 2017		HYDRAULICS ENGINEER SEAL 029388 VANK 2017



- 217 JR DEVELOPERS, LLC.
DB 5318 PG 2405
MB 34 PG 316
- 227 JOSEPH E. SHANNON
DB 97GS PG 1442
DB 1397 PG 656
DB 1369 PG 1122
DB 1130 PG 20
DB 1026 PG 437



NEW HANOVER COUNTY
SEWER AND WATER DISTRICT
DB 2763 PG 323
MB 39 PG 57 & 58
MB 39 PG 161 & 162

ROYA D. WEYERHAEUSER
DB 3836 PG 777
MB 39 PG 161

JACOB'S RIDGE AT WEST
BAY ESTATES HOA, INC.
DB 3576 PG 816
MB 39 PG 161 & 162

GAVIN MYERS
DB 5427 PG 258
MB 39 PG 161

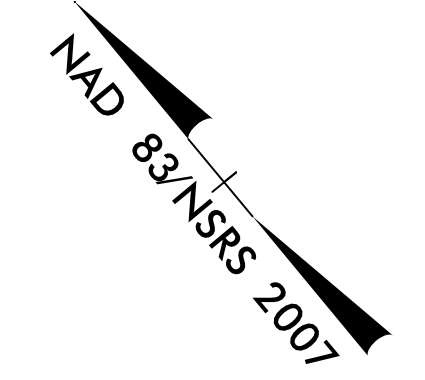
JACOB'S RIDGE AT WEST
BAY ESTATES HOA, INC.
DB 3576 PG 816
MB 39 PG 161 & 162

225 OGDEN BUSINESS PARK, LLC
DB 2745 PG 632
DB 4753 PG 115
DB 4880 PG 2334
MB 12 PG 281
MB 33 PG 292
MB 39 PG 113

ICE VENTURES REALTY, LLC
DB 4344 PG 668
MB 12 PG 281

DOCUMENT NOT CONSIDERED FINAL
UNLESS ALL SIGNATURES COMPLETED

MATCHLINE (SHEET 29)



**DASHED WORK THIS SHEET PERFORMED BY
OTHERS UNDER TIP U-4751A**

SEE SHEET 2B-8 FOR CURVE DATA