

PROJECT REFERENCE NO. U-4751		SHEET NO. 18	
RW SHEET NO.		HYDRAULICS ENGINEER	
ROADWAY DESIGN ENGINEER		SEAL	
<b>DOCUMENT NOT CONSIDERED FINAL UNLESS ALL SIGNATURES COMPLETED</b>			

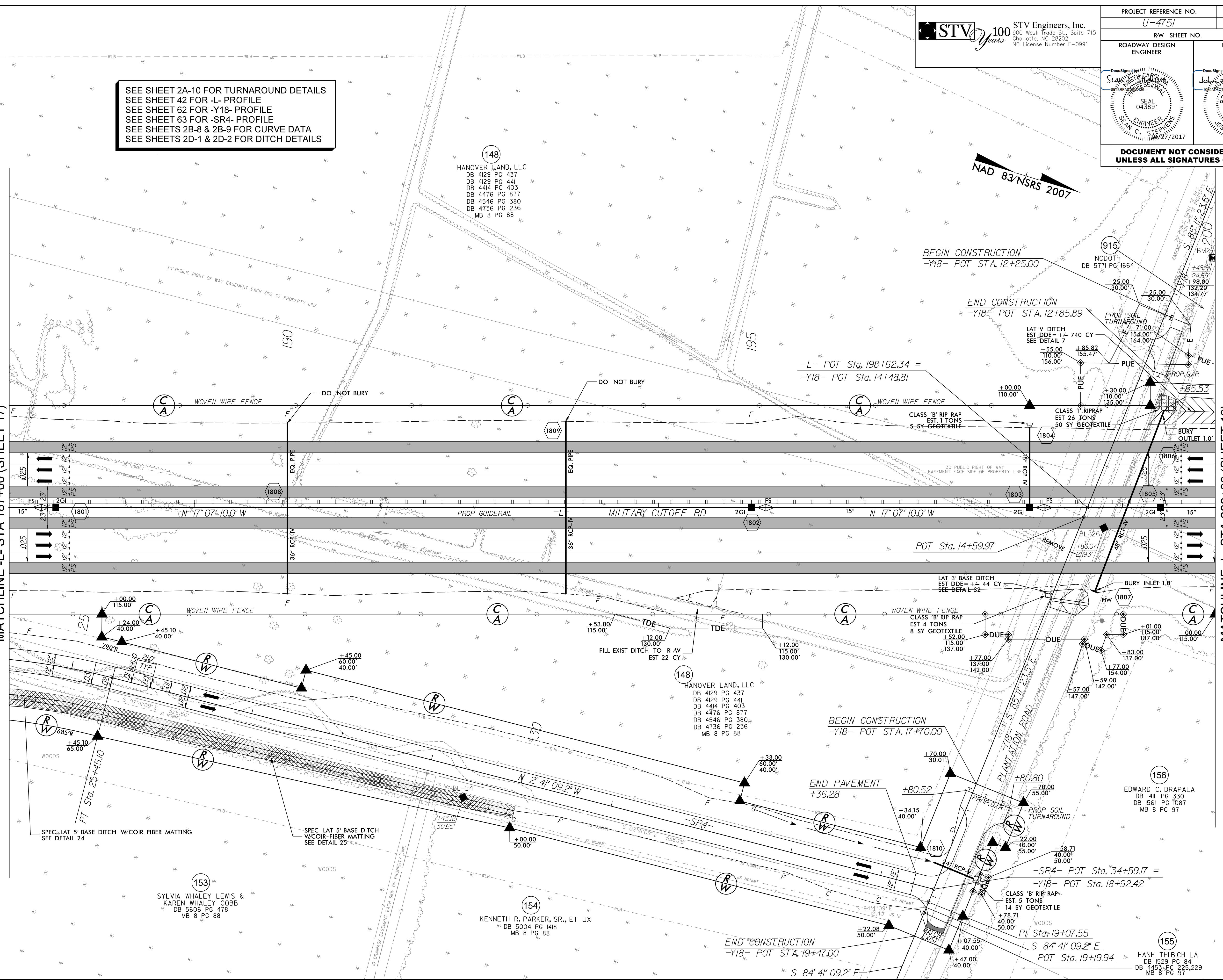
SEE SHEET 2A-10 FOR TURNAROUND DETAILS  
SEE SHEET 42 FOR -L- PROFILE  
SEE SHEET 62 FOR -Y18- PROFILE  
SEE SHEET 63 FOR -SR4- PROFILE  
SEE SHEETS 2B-8 & 2B-9 FOR CURVE DATA  
SEE SHEETS 2D-1 & 2D-2 FOR DITCH DETAILS

148  
HANOVER LAND, LLC  
DB 4129 PG 437  
DB 4129 PG 441  
DB 4414 PG 403  
DB 4476 PG 877  
DB 4546 PG 380  
DB 4736 PG 236  
MB 8 PG 88

NAD 83/NSRS 2007

MATCHLINE L-L STA 187+00 (SHEET 17)

MATCHLINE L-L STA 200+00 (SHEET 19)



SPEC. LAT 5" BASE DITCH W/COIR FIBER MATTING  
SEE DETAIL 24

SPEC. LAT 5" BASE DITCH  
W/COIR FIBER MATTING  
SEE DETAIL 25

153  
SYLVIA WHALEY LEWIS &  
KAREN WHALEY COBB  
DB 5606 PG 478  
MB 8 PG 88

154  
KENNETH R. PARKER, SR., ET UX  
DB 5004 PG 1418  
MB 8 PG 88

148  
HANOVER LAND, LLC  
DB 4129 PG 437  
DB 4129 PG 441  
DB 4414 PG 403  
DB 4476 PG 877  
DB 4546 PG 380  
DB 4736 PG 236  
MB 8 PG 88

156  
EDWARD C. DRAPALA  
DB 1411 PG 330  
DB 1561 PG 1087  
MB 8 PG 97

155  
HANH THI BICH LA  
DB 1529 PG 841  
DB 4453 PG 225,229  
MB 8 PG 97

10/27/2017 10:47:00 AM Proj:\Projects\U4751.RDY\_psh18.dgn