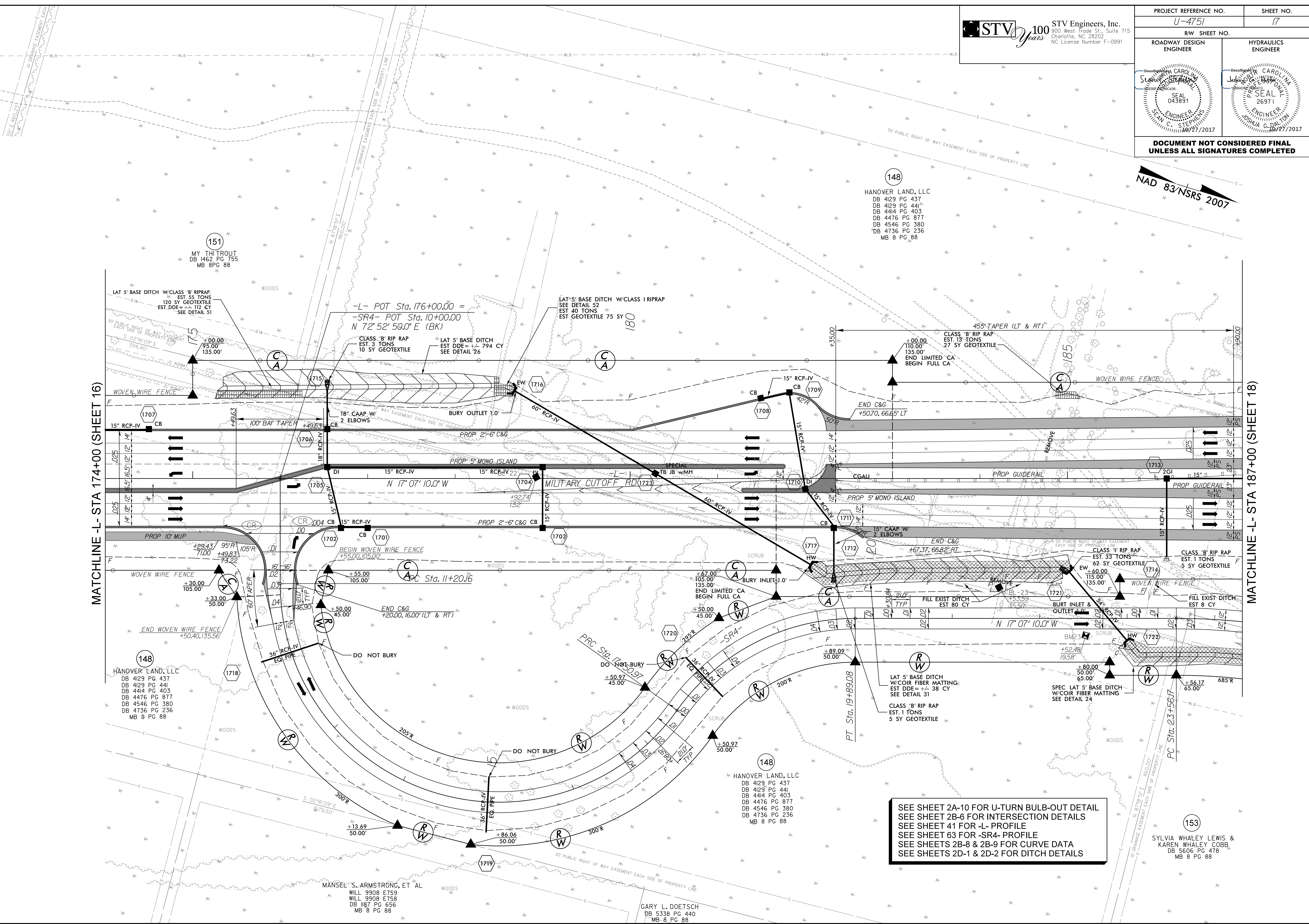
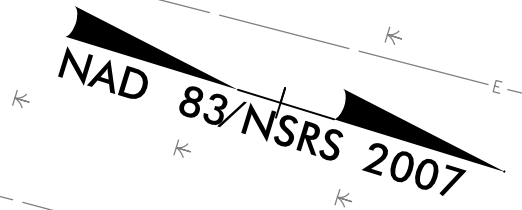


PROJECT REFERENCE NO. U-4751		SHEET NO. 17	
RW SHEET NO.		HYDRAULICS ENGINEER	
ROADWAY DESIGN ENGINEER		SEAL 043891	
SEAL 043891		SEAL 26971	
C. STEPHENS		JOSHUA S. DALTON	
10/27/2017		10/27/2017	

**DOCUMENT NOT CONSIDERED FINAL
UNLESS ALL SIGNATURES COMPLETED**



MATCHLINE -L- STA 174+00 (SHEET 16)

MATCHLINE -L- STA 187+00 (SHEET 18)

151
MY THI TROUT
DB 1462 PG 755
MB 8 PG 88

148
HANOVER LAND, LLC
DB 4129 PG 437
DB 4129 PG 441
DB 4414 PG 403
DB 4476 PG 877
DB 4546 PG 380
DB 4736 PG 236
MB 8 PG 88

148
HANOVER LAND, LLC
DB 4129 PG 437
DB 4129 PG 441
DB 4414 PG 403
DB 4476 PG 877
DB 4546 PG 380
DB 4736 PG 236
MB 8 PG 88

148
HANOVER LAND, LLC
DB 4129 PG 437
DB 4129 PG 441
DB 4414 PG 403
DB 4476 PG 877
DB 4546 PG 380
DB 4736 PG 236
MB 8 PG 88

153
SYLVIA WHALEY LEWIS &
KAREN WHALEY COBB
DB 5606 PG 478
MB 8 PG 88

SEE SHEET 2A-10 FOR U-TURN BULB-OUT DETAIL
SEE SHEET 2B-6 FOR INTERSECTION DETAILS
SEE SHEET 41 FOR -L- PROFILE
SEE SHEET 63 FOR -SR4- PROFILE
SEE SHEETS 2B-8 & 2B-9 FOR CURVE DATA
SEE SHEETS 2D-1 & 2D-2 FOR DITCH DETAILS

10/27/2017 10:27:20 AM Proj:\Projects\U4751.RDY_psh17.dgn

MANSEL S. ARMSTRONG, ET AL
WILL 9908 E759
WILL 9908 E758
DB 187 PG 656
MB 8 PG 88

GARY L. DOETSCH
DB 6338 PG 440
MB 8 PG 88