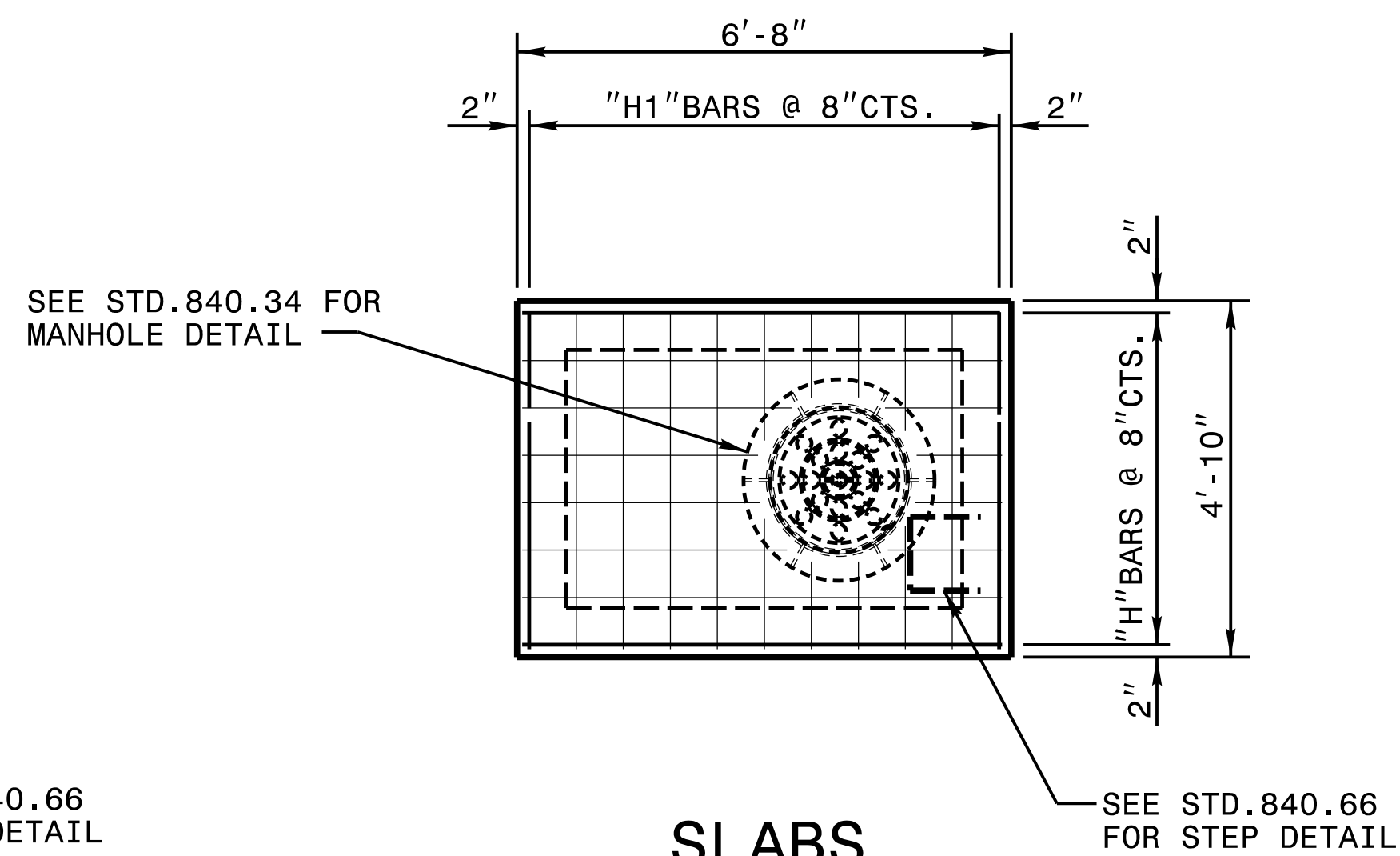
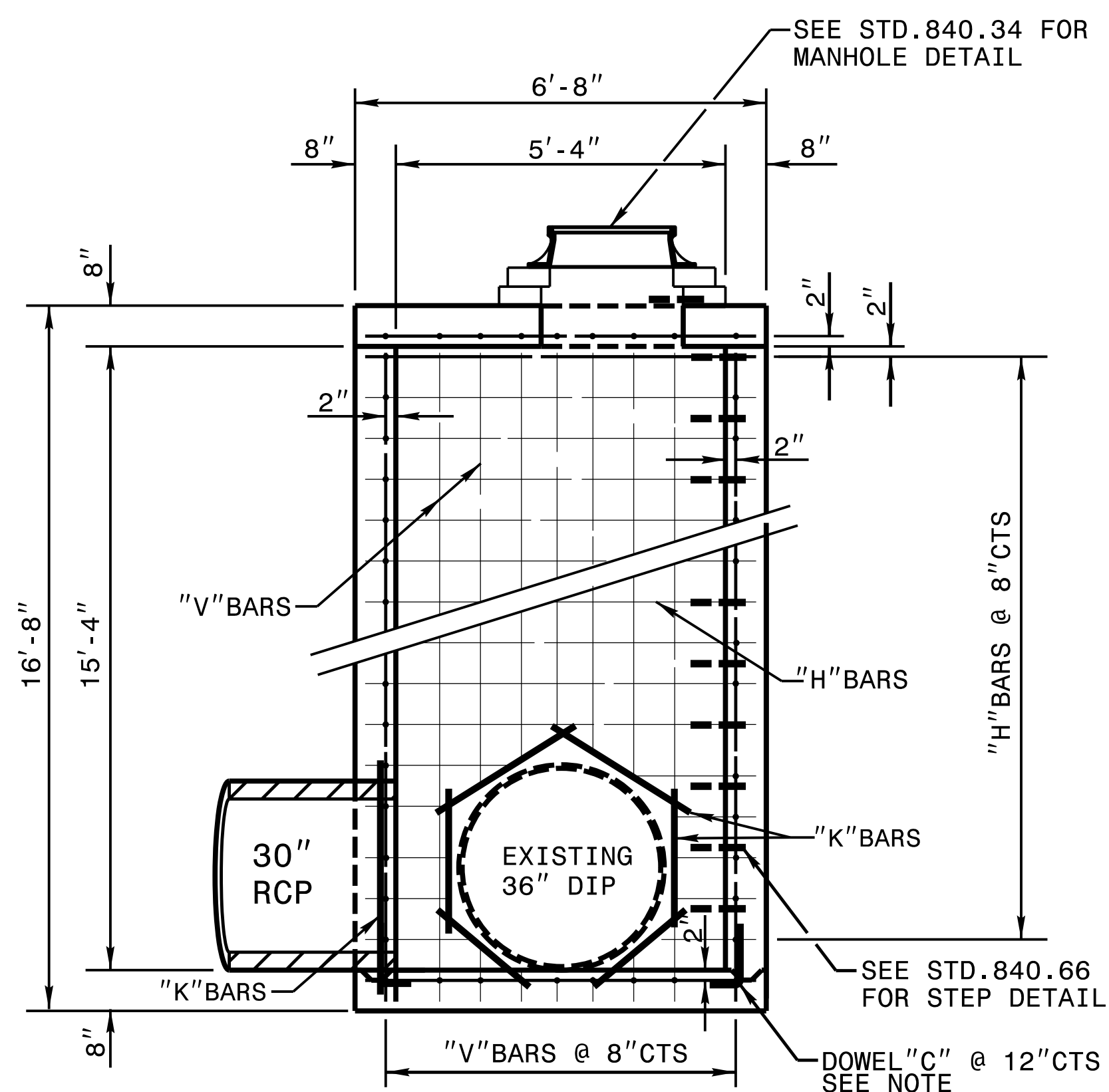


PLAN VIEW

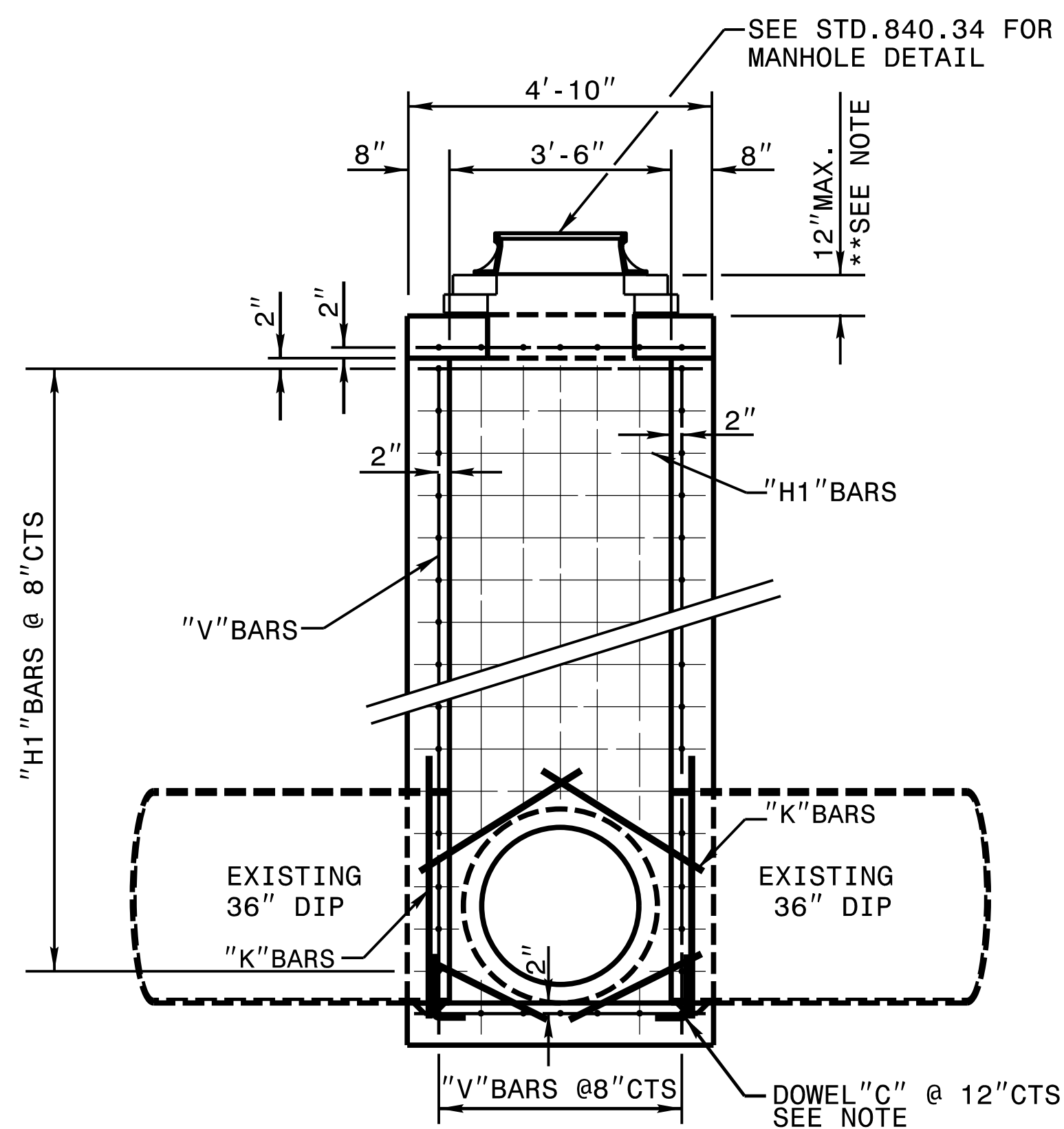


SLABS

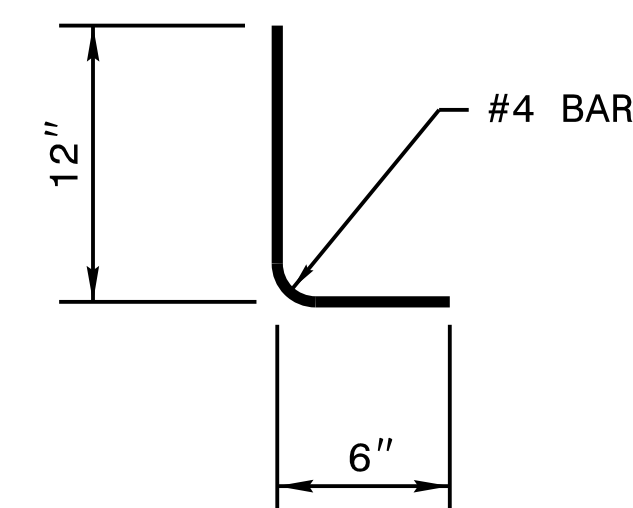
- GENERAL NOTES:**
- THE BASE SLAB TO BE CONSTRUCTED BY FORMING.
 - SEE STD. DWG. 840.00 FOR CONSTRUCTION OF BASE SLAB
 - CLASS 'AA' CONCRETE TO BE USED THROUGHOUT.
 - CONSTRUCTION OPTIONS: MONOLITHIC POUR; 2" KEYWAY OR #4 BAR DOWELS AT 12" CENTERS AS DIRECTED BY THE ENGINEER.
 - REINFORCING STEEL TO BE CUT, BENT OR RELOCATED TO POSITION PIPE AS DIRECTED BY THE ENGINEER.
 - ALL EXPOSED CORNERS TO BE CHAMFERED 1".
 - SEE STD. DRAWING 840.34 FOR CONSTRUCTION OF RISER AND MANHOLE.
 - JUNCTION BOXES OVER 3'-6" IN DEPTH WITH MANHOLES WILL REQUIRE STEPS TO BE PLACED ON 12" CTRS. REFERENCE STD. NO. 840.66.
 - MAINTAIN 2" MINIMUM CONCRETE COVERAGE ON ALL STEEL.



SECTION X-X



SECTION Y-Y



DOWEL "C"

BILL OF MATERIAL					
CODE	BAR#	LENGTH	LBS/FT.	QTY.	LBS
H	4	6'-4"	0.668	76	322
H1	4	4'-6"	0.668	82	247
V	4	15'-8"	0.668	32	335
K	4	3'-0"	0.668	16	32
C	4	1'-6"	0.668	20	20
TOTAL WEIGHT STEEL					956
MASONRY QUANTITIES					
CLASS "B" CONCRETE				9.2	CU.YDS.
PIPE DEDUCTIONS					
1-30" RCP				-0.3	CU.YD.
2-36" DIP				-0.6	CU.YD.
TOTAL CLASS "B" CONCRETE				8.3	CU.YDS.

** 0.30 CU.YD. PER FOOT OF RISER HEIGHT.

**DOCUMENT NOT CONSIDERED FINAL
UNLESS ALL SIGNATURES COMPLETED**

**CONTRACT STANDARDS & DEVELOPMENT UNIT
STANDARDS AND SPECIAL DESIGN**
Office 919-707-6900 FAX 919-250-4119

**SPECIAL TRAFFIC BEARING
JUNCTION BOX**

ORIGINAL BY: rnbritt DATE: 07-26-11
 MODIFIED BY: kakempf DATE: 06-28-17
 CHECKED BY: DATE:
 FILE SPEC.: kkempf/english/Extra Depth T&B 36in Pipe.dgn

