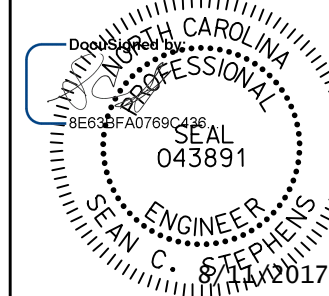
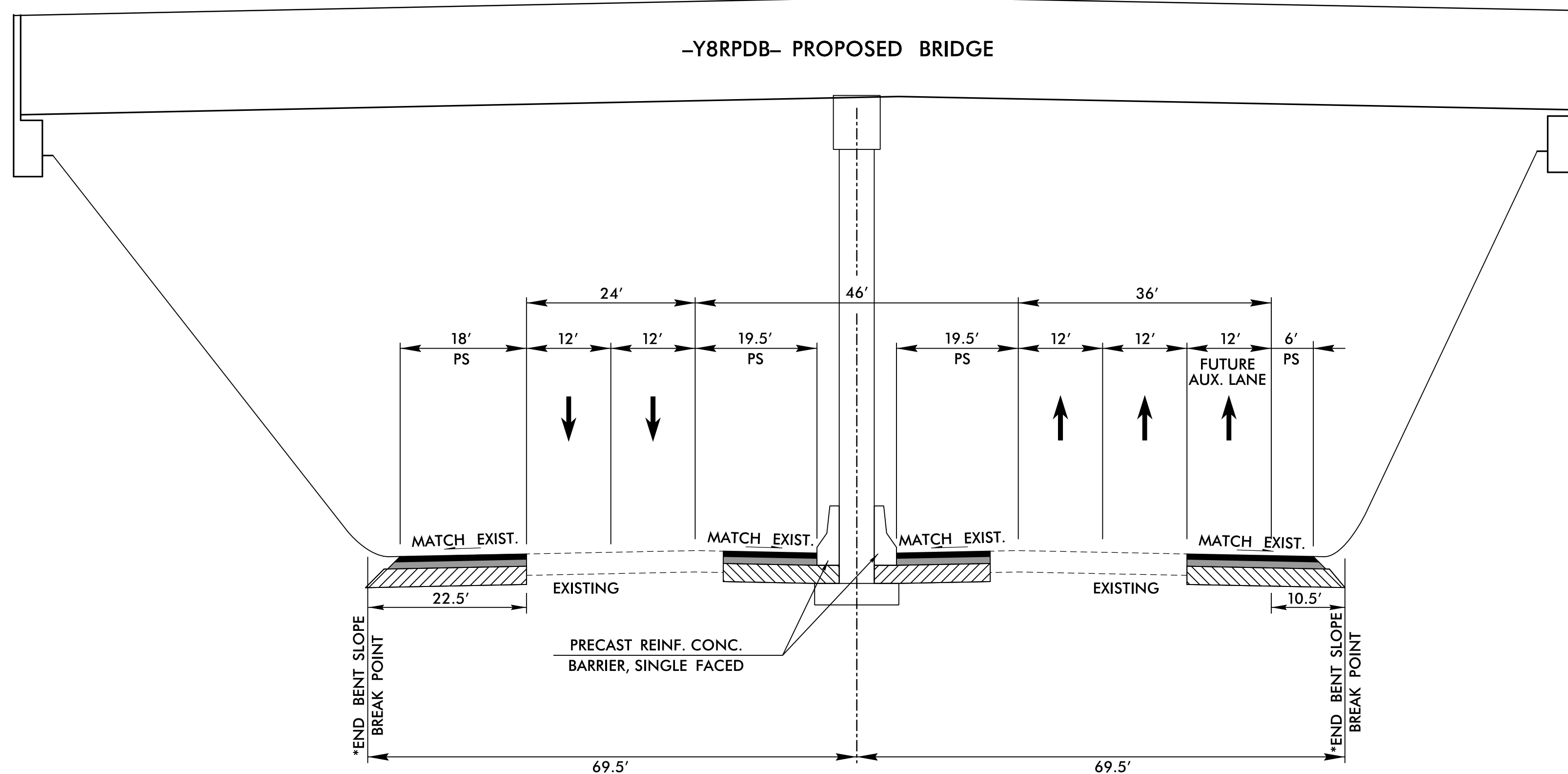


# STRUCTURE 4: -Y8RPDB- OVER -Y8- (US 17 BYPASS)

**STV** 100 Years  
**STV Engineers, Inc.**  
 900 West Trade St., Suite 715  
 Charlotte, NC 28202  
 NC License Number F-0991

PROJECT REFERENCE NO. U-4751	SHEET NO. 2B-4
RW SHEET NO.	
ROADWAY DESIGN ENGINEER	
	
DOCUMENT NOT CONSIDERED FINAL UNLESS ALL SIGNATURES COMPLETED	

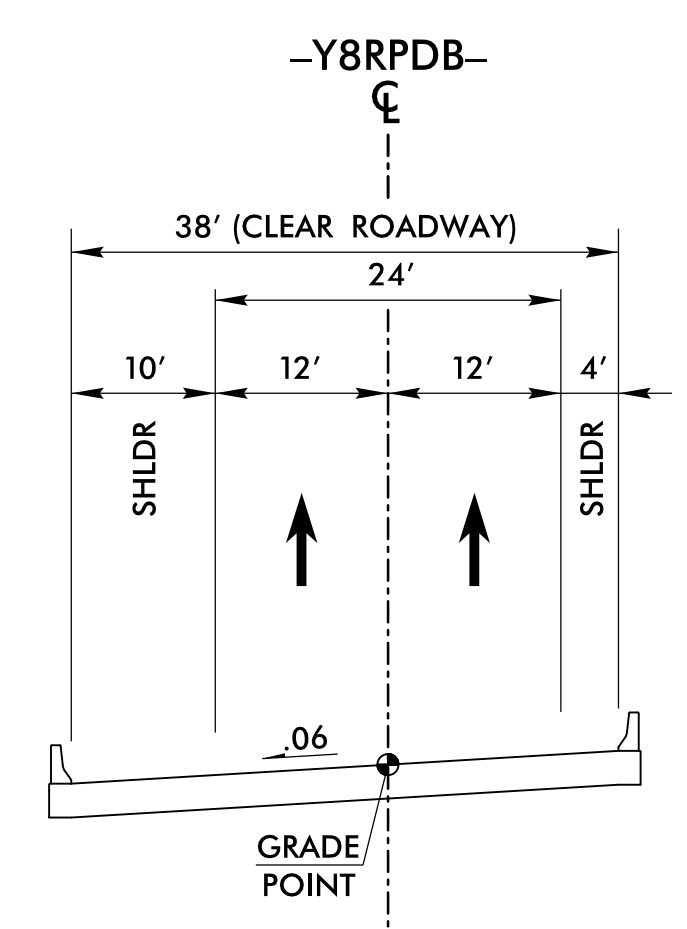


-Y8- DESIGN DATA	
ADT 2017	= 43,100
ADT 2037	= 95,200
TTST	= 6%
DUAL	= 4%
DHV	= 12%
DIR	= 60%

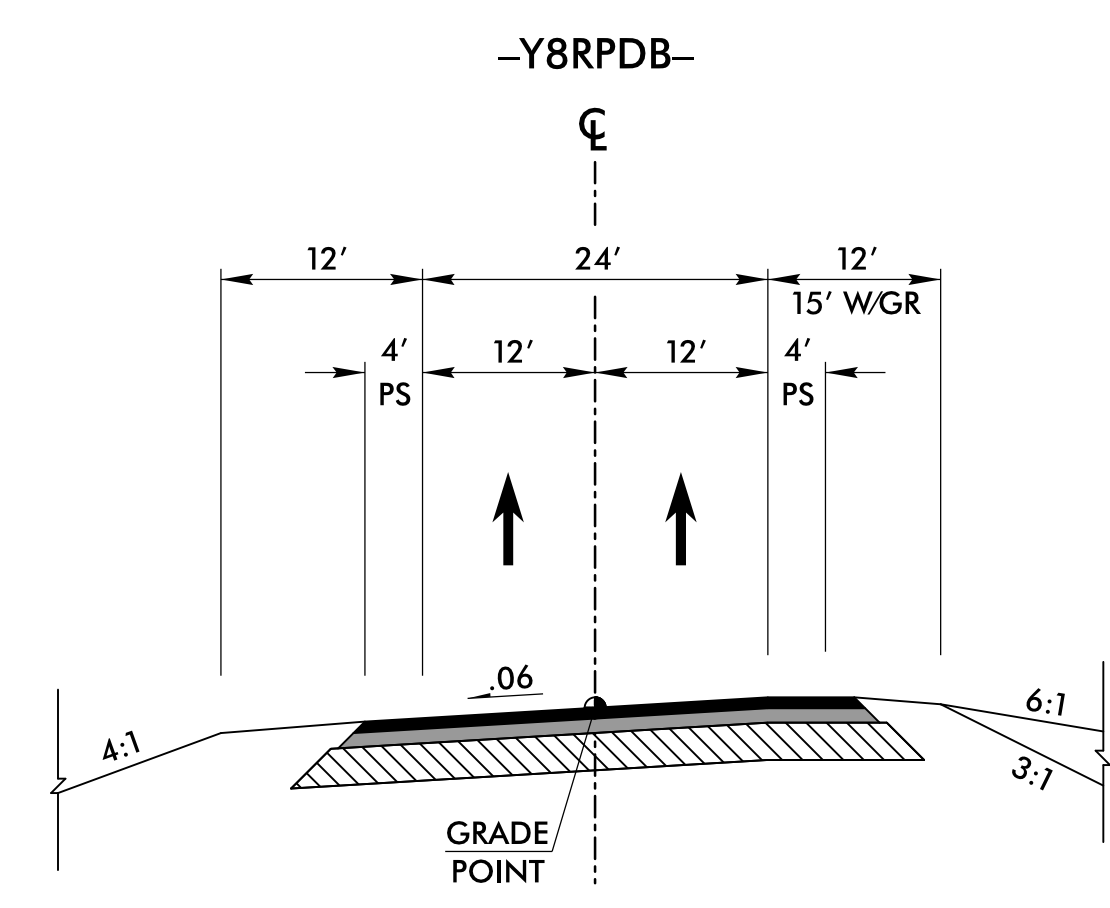
**MINIMUM VERTICAL CLEARANCE = 17'-0"**

-Y8- (US17 BYPASS)  
 TYPICAL SECTION UNDER STRUCTURE  
 -Y8- 99+67.11  
 \*SEE STD. 610.03

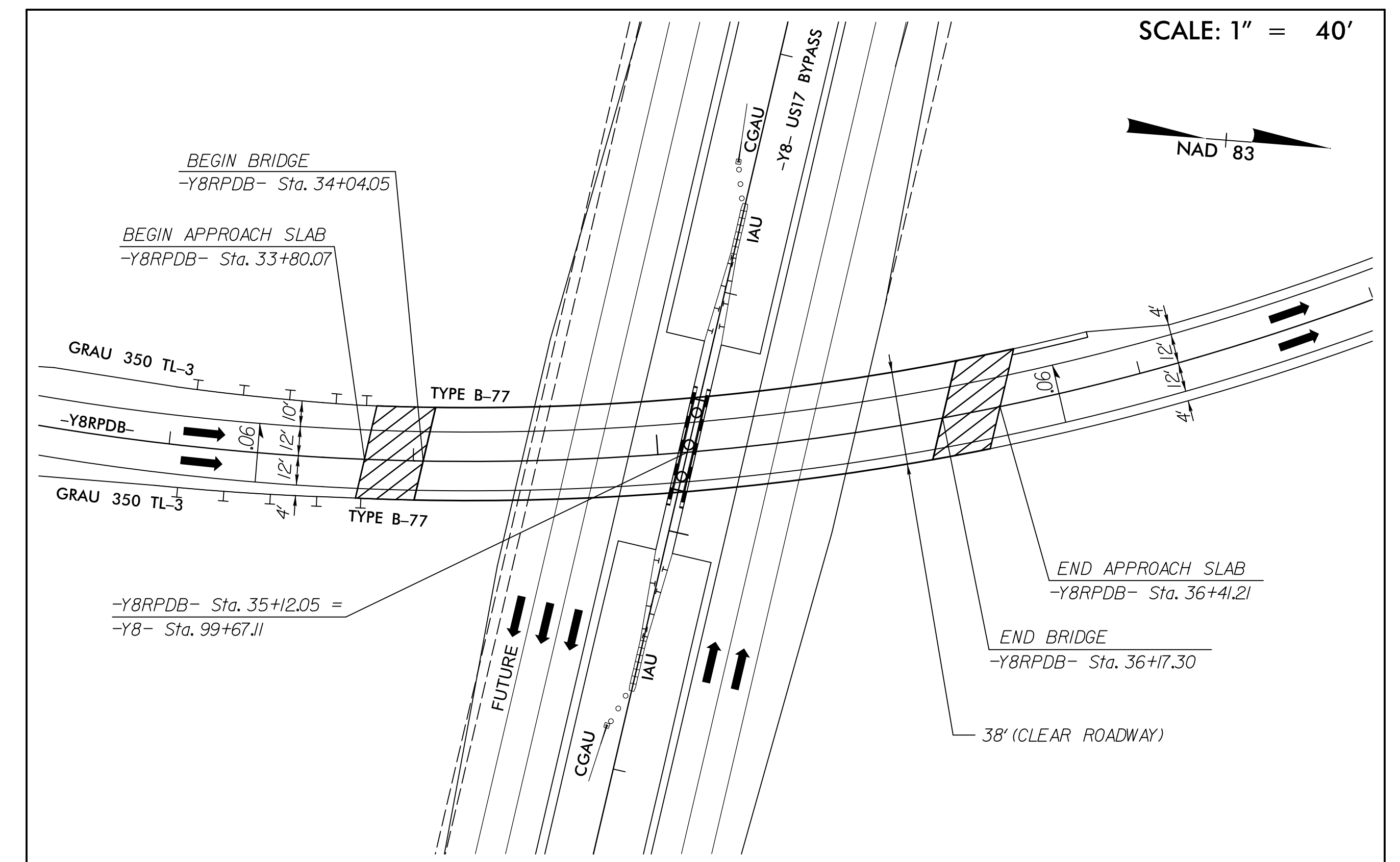
FUNCTIONAL CLASSIFICATION  
 RURAL FREEWAY



TYPICAL SECTION ON STRUCTURE  
 -Y8RPDB- 35+12.05



TYPICAL SECTION ON ROADWAY APPROACHING STRUCTURE  
 FUNCTIONAL CLASSIFICATION RAMP



SKETCH SHOWING BRIDGE-PAVEMENT RELATIONSHIP FOR  
 -Y8RPDB- OVER -Y8- (US 17 WILMINGTON BYPASS)

r:\roadway\proj\stn\U4751\_RDY\_ds102B-04.dgn  
 7/14/2017