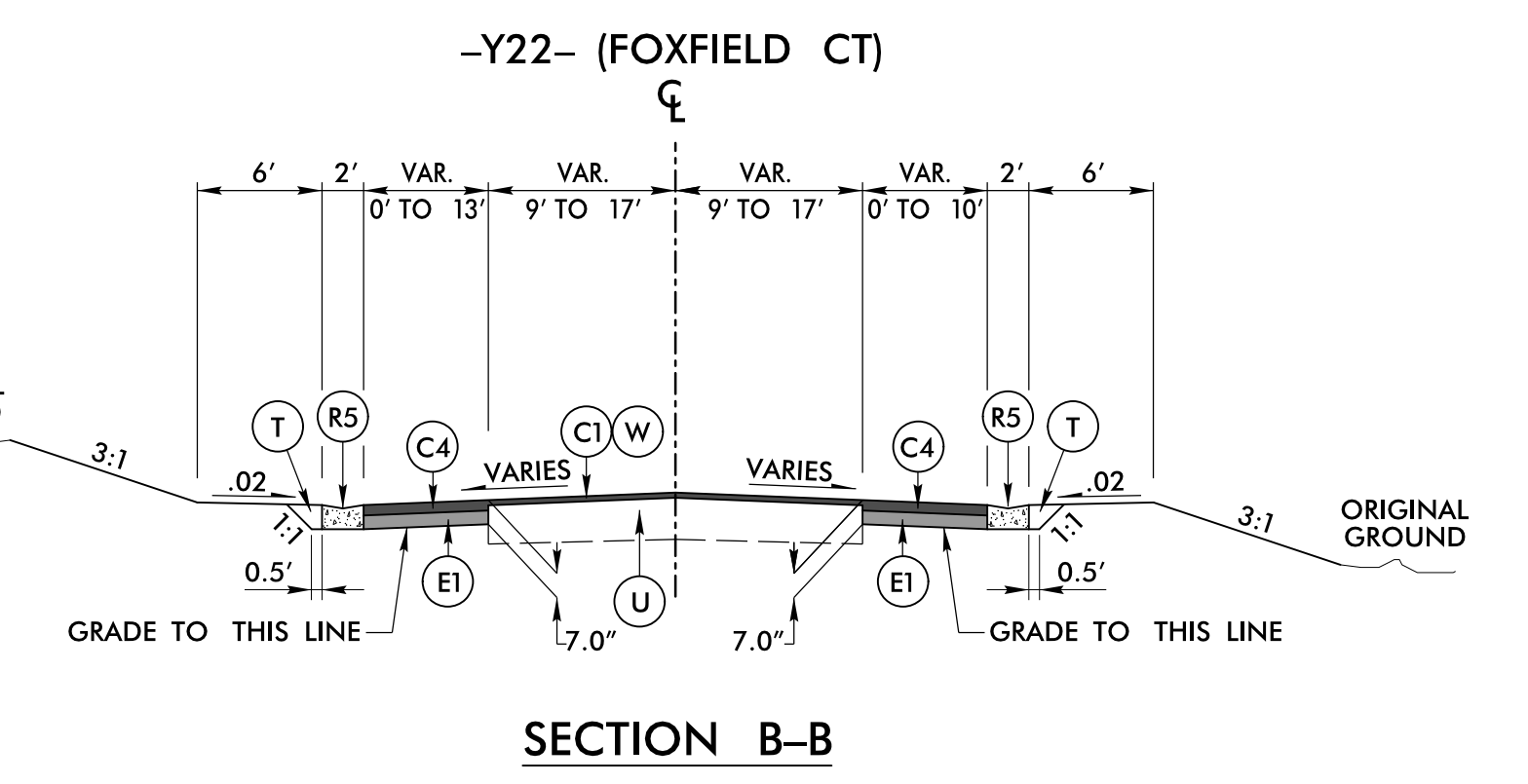
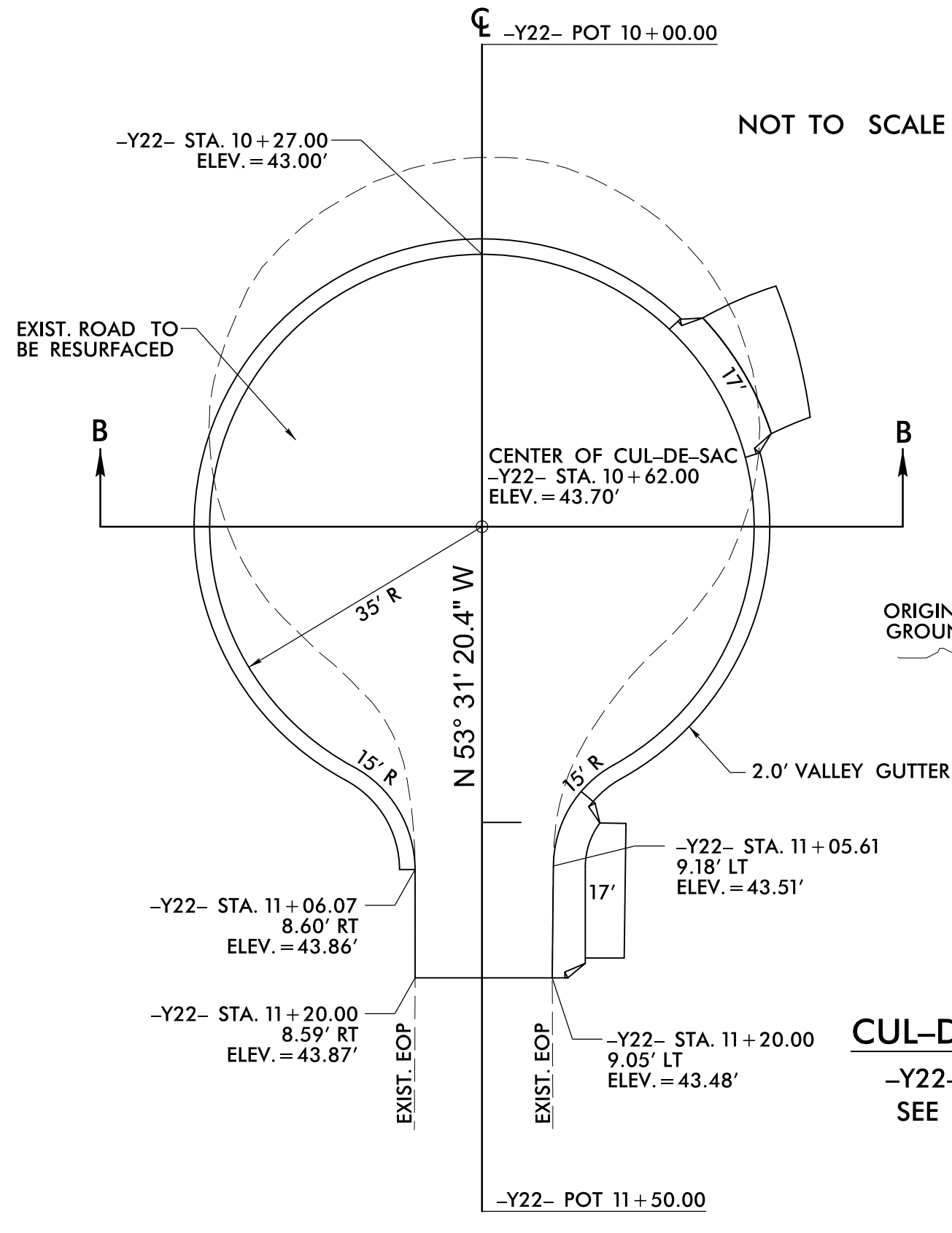
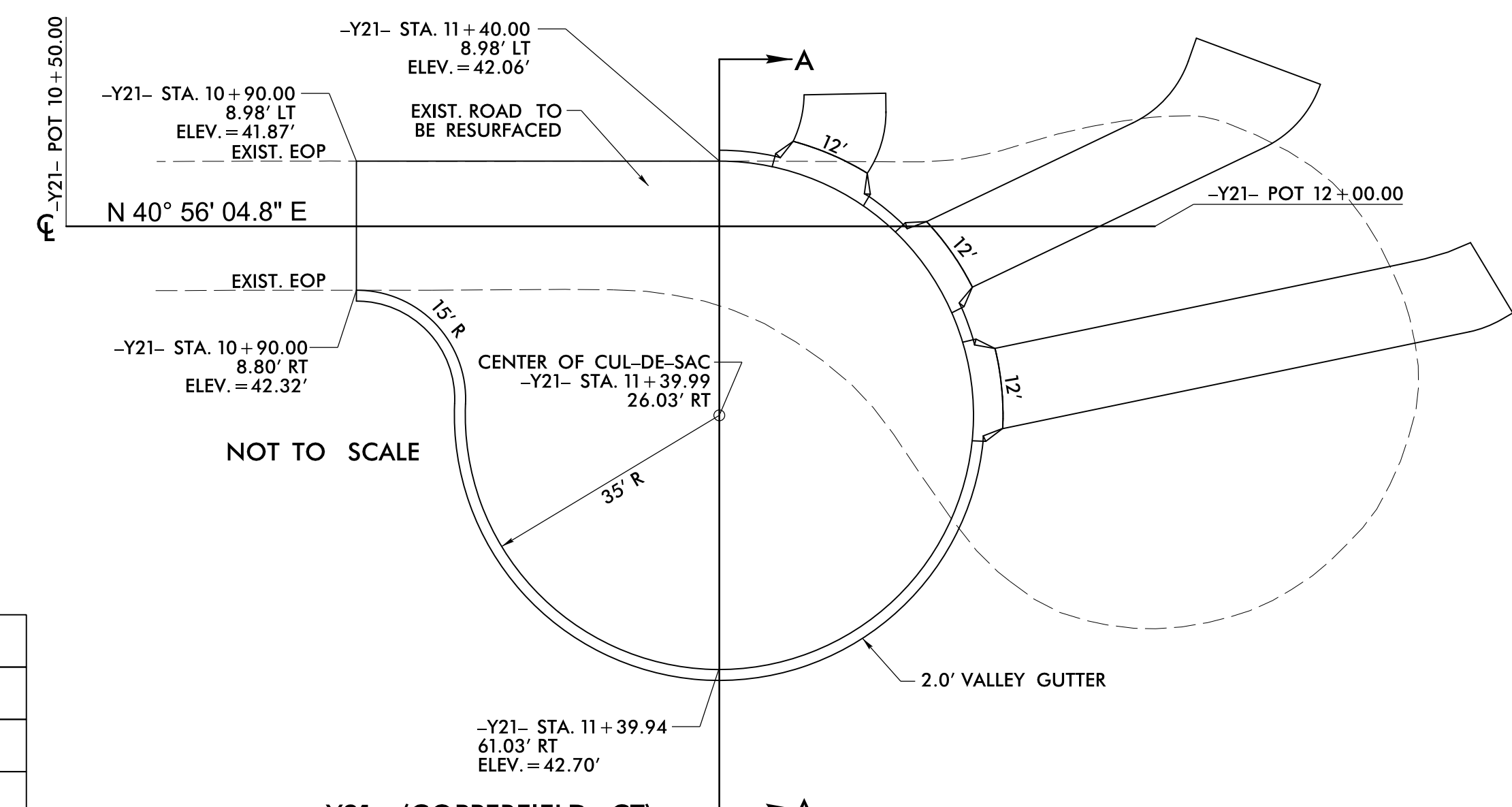


STV 100 Years
 STV Engineers, Inc.
 900 West Trade St., Suite 715
 Charlotte, NC 28202
 NC License Number F-0991

**DOCUMENT NOT CONSIDERED FINAL
 UNLESS ALL SIGNATURES COMPLETED**

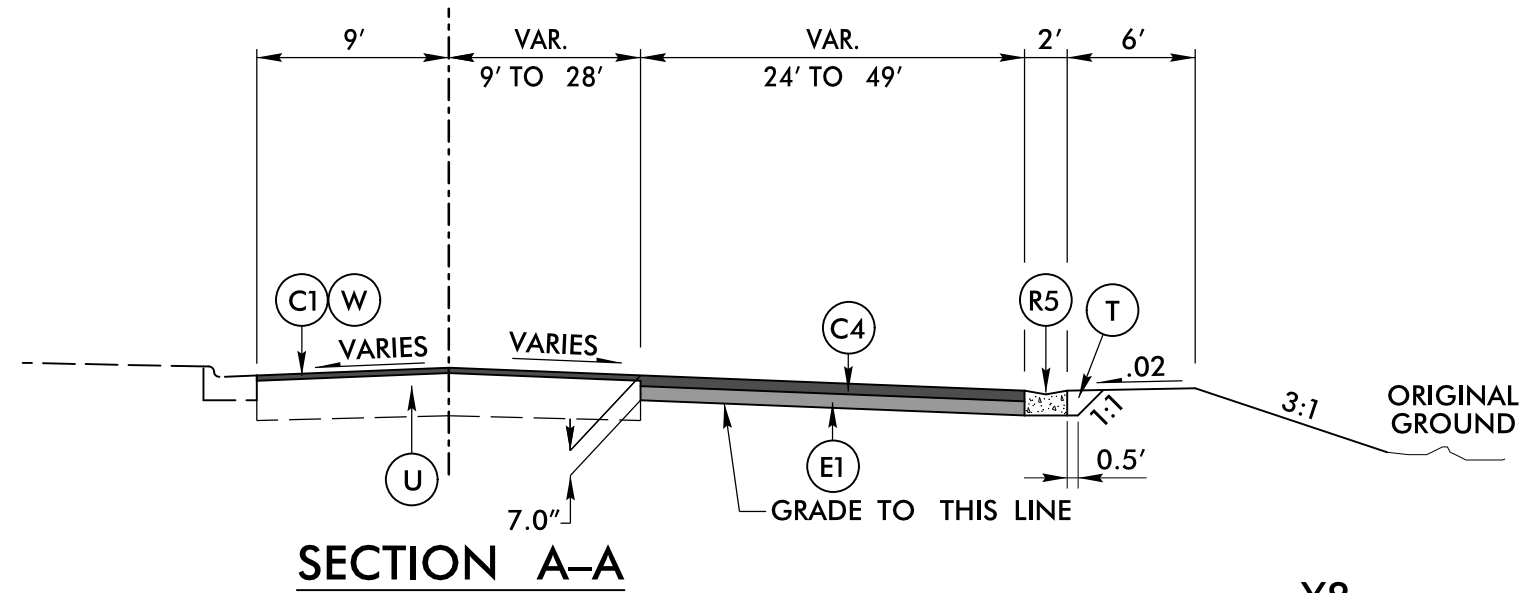
| | |
|---|--|
| PROJECT REFERENCE NO. U-4751 | SHEET NO. 2A-11 |
| ROADWAY DESIGN ENGINEER <i>[Signature]</i> | PAVEMENT DESIGN ENGINEER <i>[Signature]</i> |



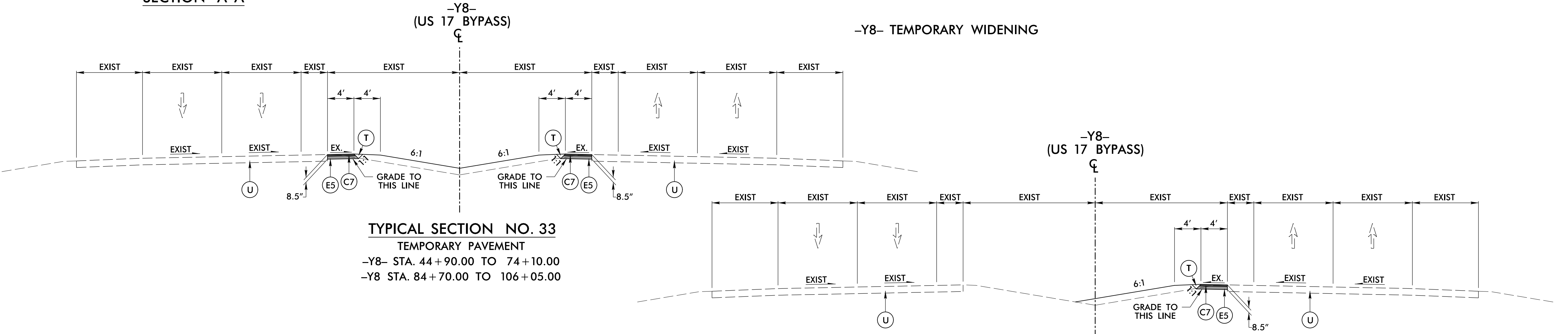
| | |
|----|-----------------------|
| C1 | 1.5" S9.5B |
| C2 | 2.0" S9.5B |
| C3 | 2.5" S9.5B |
| C4 | 3.0" S9.5B |
| C5 | VAR. S9.5B |
| C6 | 1.5" S9.5C |
| C7 | 3.0" S9.5C |
| C8 | VAR. S9.5C |
| D1 | 2.5" I19.0B |
| D2 | 3.0" I19.0B |
| D3 | 4.0" I19.0B |
| D4 | VAR. I19.0B |
| D5 | 4.0" I19.0C |
| D6 | VAR. I19.0C |
| E1 | 4.0" B25.0B |
| E2 | 4.5" B25.0B |
| E3 | VAR. B25.0B |
| E4 | 4.5" B25.0C |
| E5 | 5.5" B25.0C |
| E6 | 7.0" B25.0C |
| E7 | VAR. B25.0C |
| J1 | 8.0" ABC |
| J2 | 6.0" ABC |
| J3 | VAR. DEPTH ABC |
| P1 | PRIME COAT |
| R1 | 2' - 6" C&G |
| R2 | 1' - 6" C&G |
| R3 | 5" MONO. ISLAND |
| R4 | SHOULDER BERM GUTTER |
| R5 | 2.0' VALLEY GUTTER |
| R6 | CONC. BARRIER, TYPE T |
| R7 | CONC. BARRIER, SINGLE |
| R8 | 2' - 9" C&G |
| S | CONC. SIDEWALK |
| T | EARTH MATERIAL |
| U | EXISTING PAVEMENT |
| V | MILLING |
| W | WEDGING |
| Y | MILLED RUMBLE STRIPS |

CUL-DE-SAC DETAIL
 -Y21- (COPPERFIELD CT)

CUL-DE-SAC DETAIL
 -Y22- (FOXFIELD CT)
 SEE PLAN SHEET 11

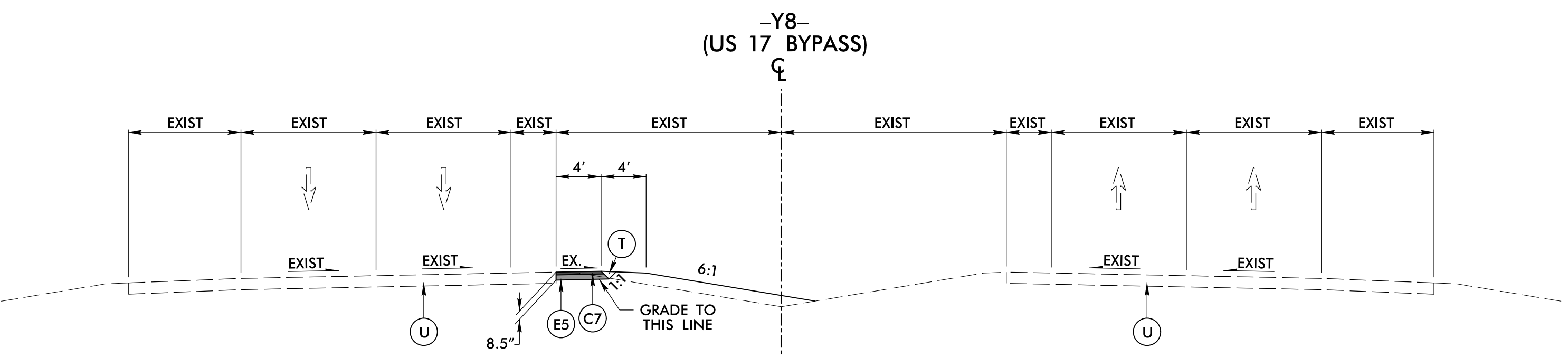


SECTION A-A

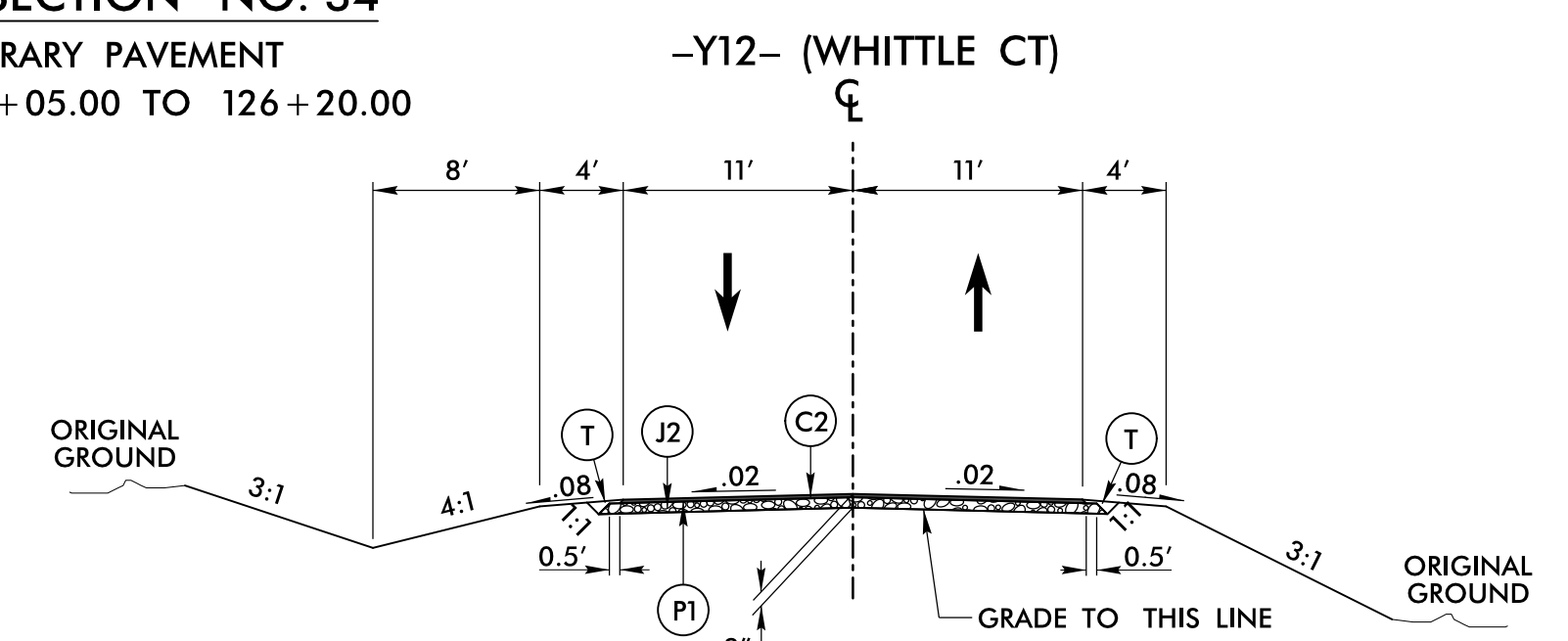


TYPICAL SECTION NO. 33
 TEMPORARY PAVEMENT
 -Y8- STA. 44+90.00 TO 74+10.00
 -Y8- STA. 84+70.00 TO 106+05.00

TYPICAL SECTION NO. 34
 TEMPORARY PAVEMENT



TYPICAL SECTION NO. 35
 TEMPORARY PAVEMENT
 -Y8- STA. 30+90.00 TO 44+90.00
 -Y8- STA. 74+10.00 TO 84+70.00



TYPICAL SECTION NO. 36
 TEMPORARY PAVEMENT FOR CONNECTOR
 SEE TEMPORARY PAVEMENT DETAIL SHEET 2B-12
 SEE TRANSPORTATION MANAGEMENT PLANS SHEET TMP-16

SEE TRANSPORTATION MANAGEMENT
 PLANS SHEETS TMP-21 THRU TMP-24
 FOR -Y8- TEMPORARY WIDENING