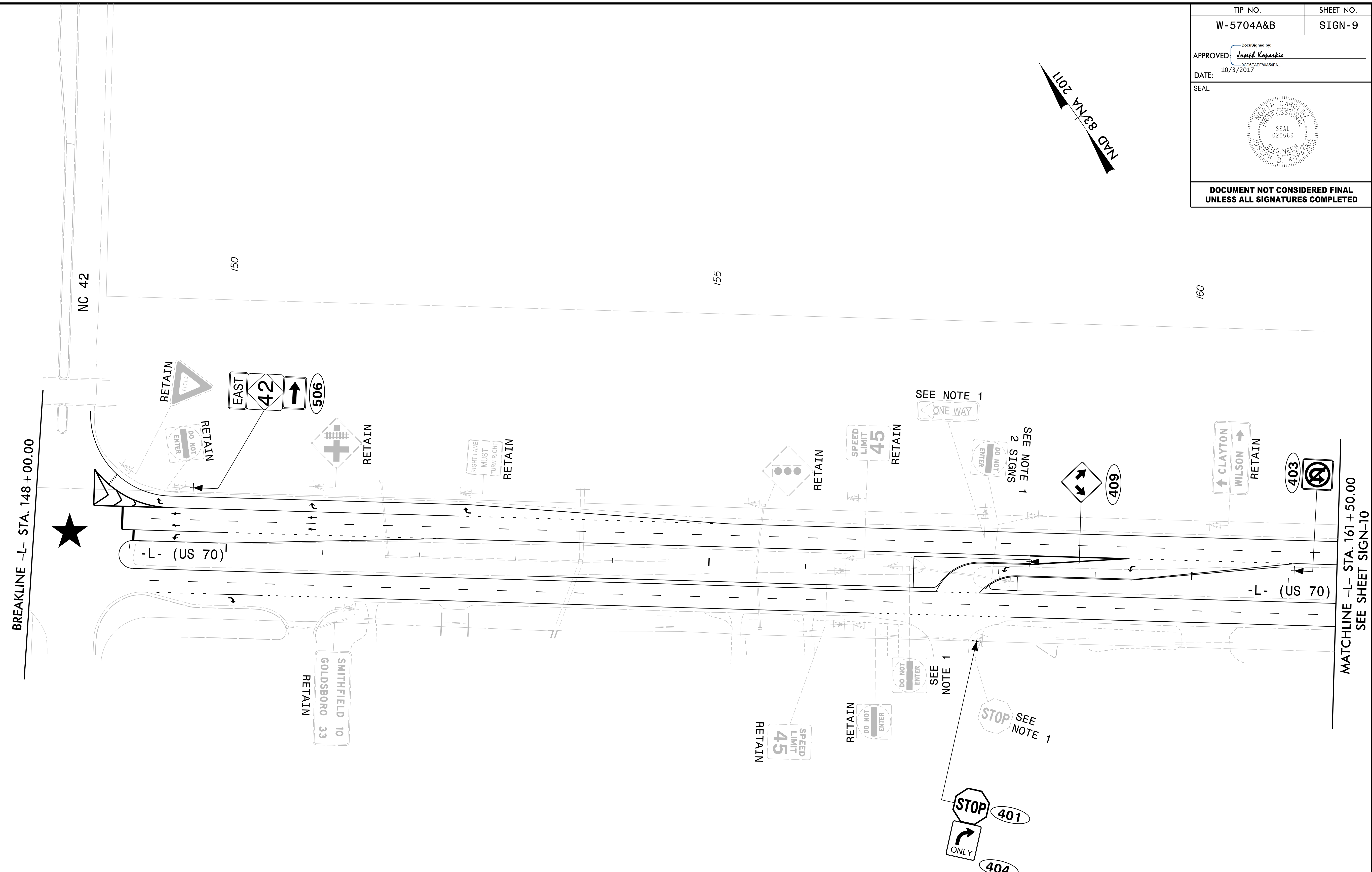


TIP NO. W-5704A&B	SHEET NO. SIGN-9
DocuSigned by: APPROVED: <i>Joseph Kopaschik</i> <small>10/3/2017 10:37:20 AM</small>	
DATE: 10/3/2017	
SEAL	
DOCUMENT NOT CONSIDERED FINAL UNLESS ALL SIGNATURES COMPLETED	



NOTE:

- DISPOSAL OF SIGN SYSTEM, U-CHANNEL

★ SIGNALIZED INTERSECTION

SEPI
ENGINEERING & CONSTRUCTION

1025 Wade Avenue
Raleigh, NC 27605
Tel: 919-789-9977
Fax: 919-789-9591
License: C-2197

**EXISTING AND PROPOSED
SIGNING DETAIL**

C:\Users\jcopaschik\OneDrive\Documents\Projects\W-5704A&B\Drawings\Signing\Sheet 9.dwg
 10/3/2017 10:37:20 AM