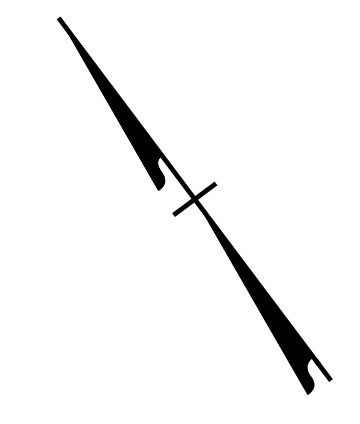


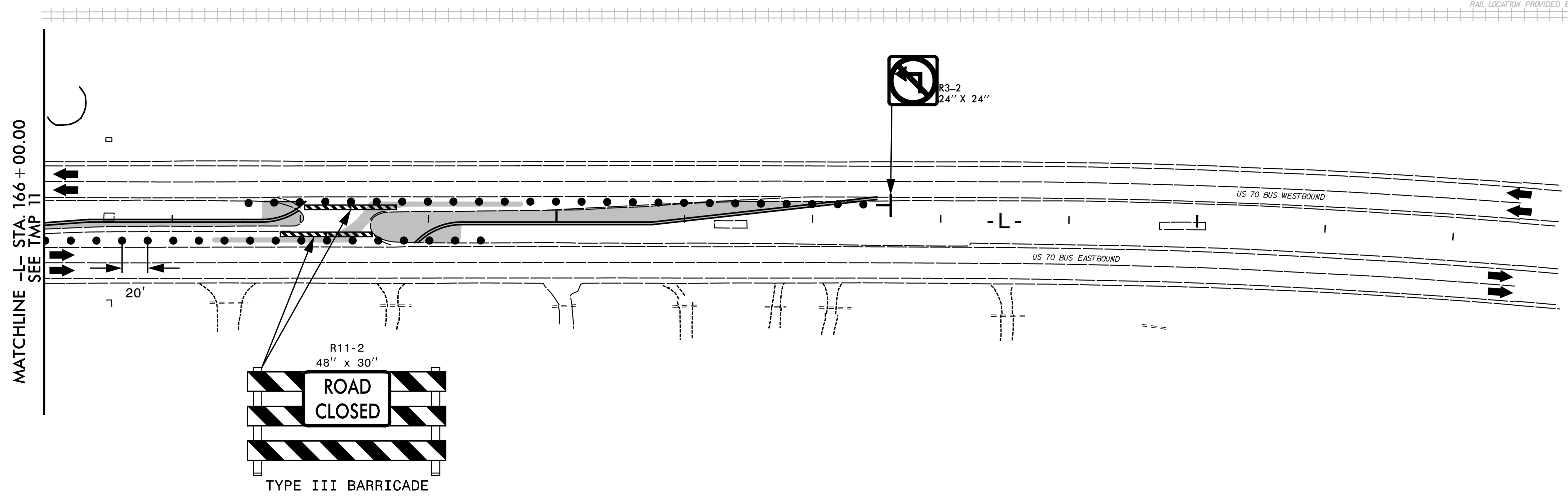
8/17/99



170

175

RAIL LOCATION PROVIDED BY NORTH CAROLINA RAIL COMPANY



10/4/2017
X:\2017\SET\075.00 W_5704A&B\TP\Trg\fig\TMP\W-5704 TMP-12.dgn
JBauman

SEPI
ENGINEERING &
CONSTRUCTION

1025 Wade Avenue
Raleigh, NC 27605
Tel: 919-789-9977
Fax: 919-789-9591
License: C-2197

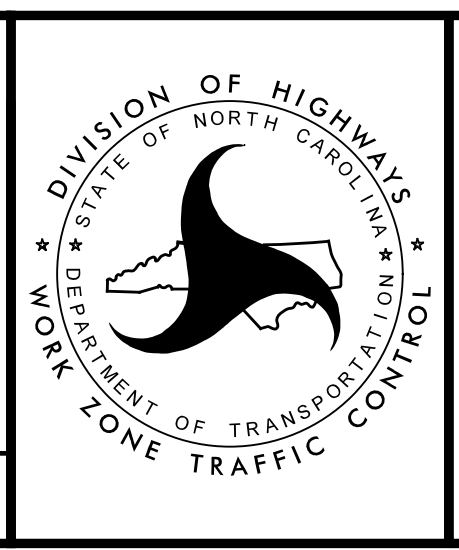
DocuSigned by:
APPROVED: *Steven Miller*
9FBC6C15CEE848E...

DATE: 10/5/2017

SEAL

SEAL
037026
ENGINEER
STEVEN D. MILLER

DOCUMENT NOT CONSIDERED FINAL
UNLESS ALL SIGNATURES COMPLETED



PHASE I