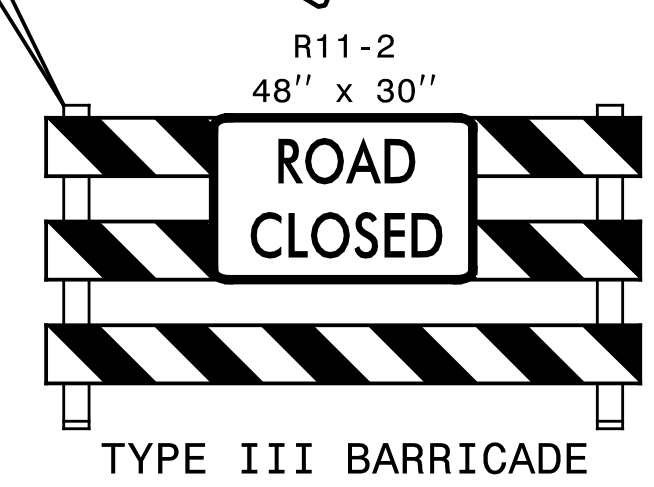
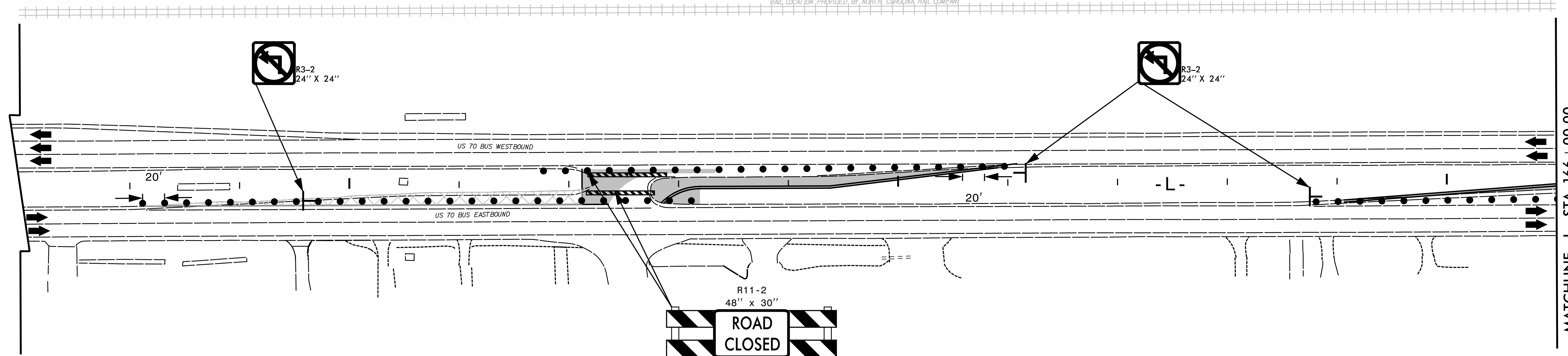


155

160

165

RAIL LOCATION PROVIDED BY NORTH CAROLINA RAIL COMPANY



MATCHLINE -L- STA. 166 + 00.00  
SEE TMP 12

10/4/2017  
X:\2017\SET\075.00 W\_5704A&B\TP\Trg\fig\TMP\W-5704 TMP-11.dgn  
JBauman

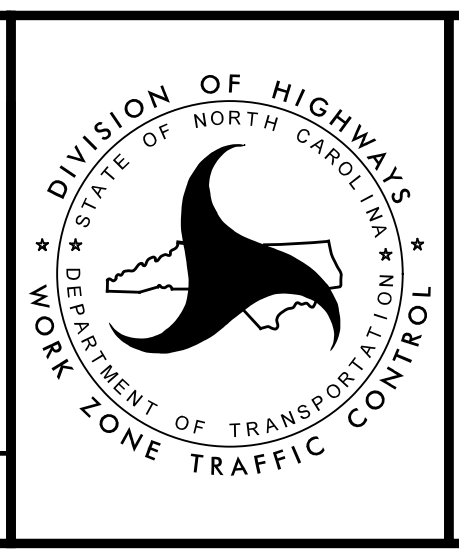
**SEPI**  
ENGINEERING &  
CONSTRUCTION

1025 Wade Avenue  
Raleigh, NC 27605  
Tel: 919-789-9977  
Fax: 919-789-9591  
License: C-2197

APPROVED: *Steven Miller*  
DATE: 10/5/2017

SEAL

**DOCUMENT NOT CONSIDERED FINAL  
UNLESS ALL SIGNATURES COMPLETED**



PHASE I