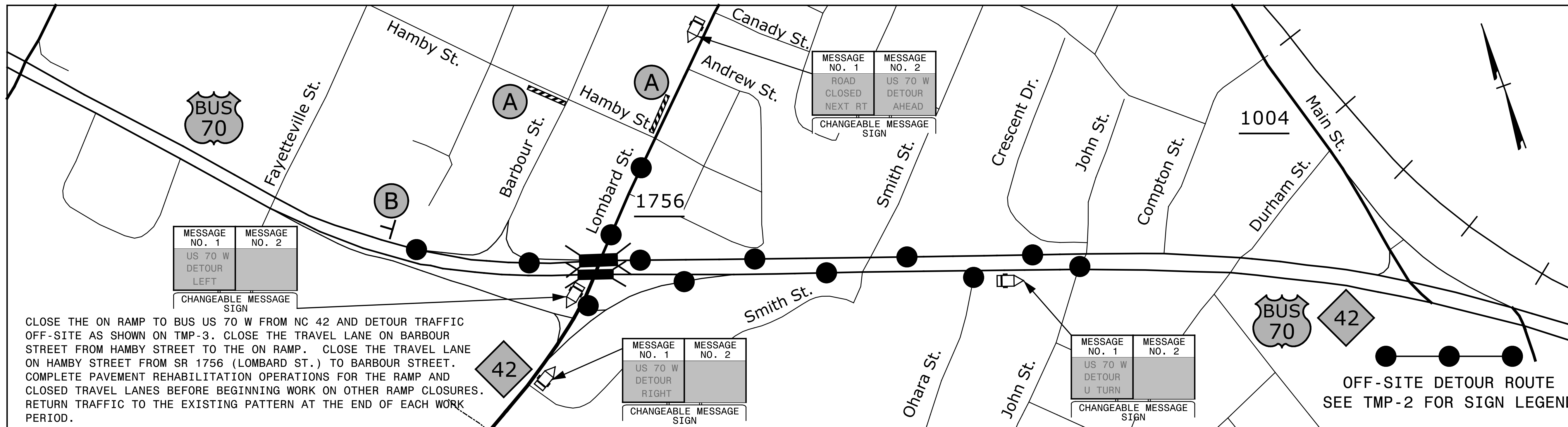


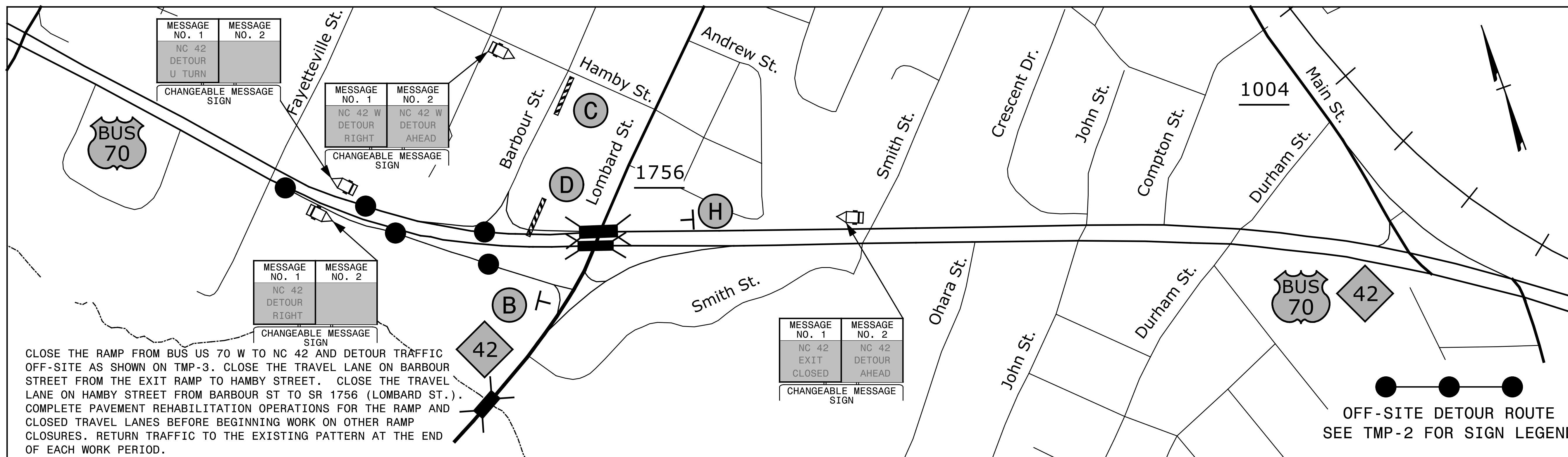
US 70 BUS W



CLOSE THE ON RAMP TO BUS US 70 W FROM NC 42 AND DETOUR TRAFFIC OFF-SITE AS SHOWN ON TMP-3. CLOSE THE TRAVEL LANE ON BARBOUR STREET FROM HAMBY STREET TO THE ON RAMP. CLOSE THE TRAVEL LANE ON HAMBY STREET FROM SR 1756 (LOMBARD ST.) TO BARBOUR STREET. COMPLETE PAVEMENT REHABILITATION OPERATIONS FOR THE RAMP AND CLOSED TRAVEL LANES BEFORE BEGINNING WORK ON OTHER RAMP CLOSURES. RETURN TRAFFIC TO THE EXISTING PATTERN AT THE END OF EACH WORK PERIOD.

OFF-SITE DETOUR ROUTE
SEE TMP-2 FOR SIGN LEGEND

NC 42 W



CLOSE THE RAMP FROM BUS US 70 W TO NC 42 AND DETOUR TRAFFIC OFF-SITE AS SHOWN ON TMP-3. CLOSE THE TRAVEL LANE ON BARBOUR STREET FROM THE EXIT RAMP TO HAMBY STREET. CLOSE THE TRAVEL LANE ON HAMBY STREET FROM BARBOUR ST TO SR 1756 (LOMBARD ST.). COMPLETE PAVEMENT REHABILITATION OPERATIONS FOR THE RAMP AND CLOSED TRAVEL LANES BEFORE BEGINNING WORK ON OTHER RAMP CLOSURES. RETURN TRAFFIC TO THE EXISTING PATTERN AT THE END OF EACH WORK PERIOD.

OFF-SITE DETOUR ROUTE
SEE TMP-2 FOR SIGN LEGEND

10/4/2017 X:\2017\SET\075.00 W-5704A&B\TP\Trg\fig\TMP\W-5704 TMP-3.dgn jbauman

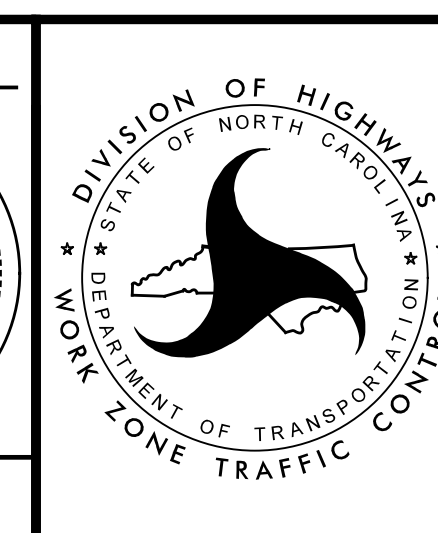
SEPI
ENGINEERING & CONSTRUCTION

1025 Wade Avenue
Raleigh, NC 27605
Tel: 919-789-9977
Fax: 919-789-9591
License: C-2197

APPROVED: *Steve Miller*
DATE: 10/5/2017

SEAL

DOCUMENT NOT CONSIDERED FINAL
UNLESS ALL SIGNATURES COMPLETED



OFF-SITE
DETOUR
DETAIL

DIVISION OF HIGHWAYS
STATE OF NORTH CAROLINA
DEPARTMENT OF TRANSPORTATION
WORK ZONE TRAFFIC CONTROL