

**This electronic collection of documents is provided  
for the convenience of the user  
and is Not a Certified Document –**

**The documents contained herein were originally issued  
and sealed by the individuals whose names and license  
numbers appear on each page, on the dates appearing  
with their signature on that page.**

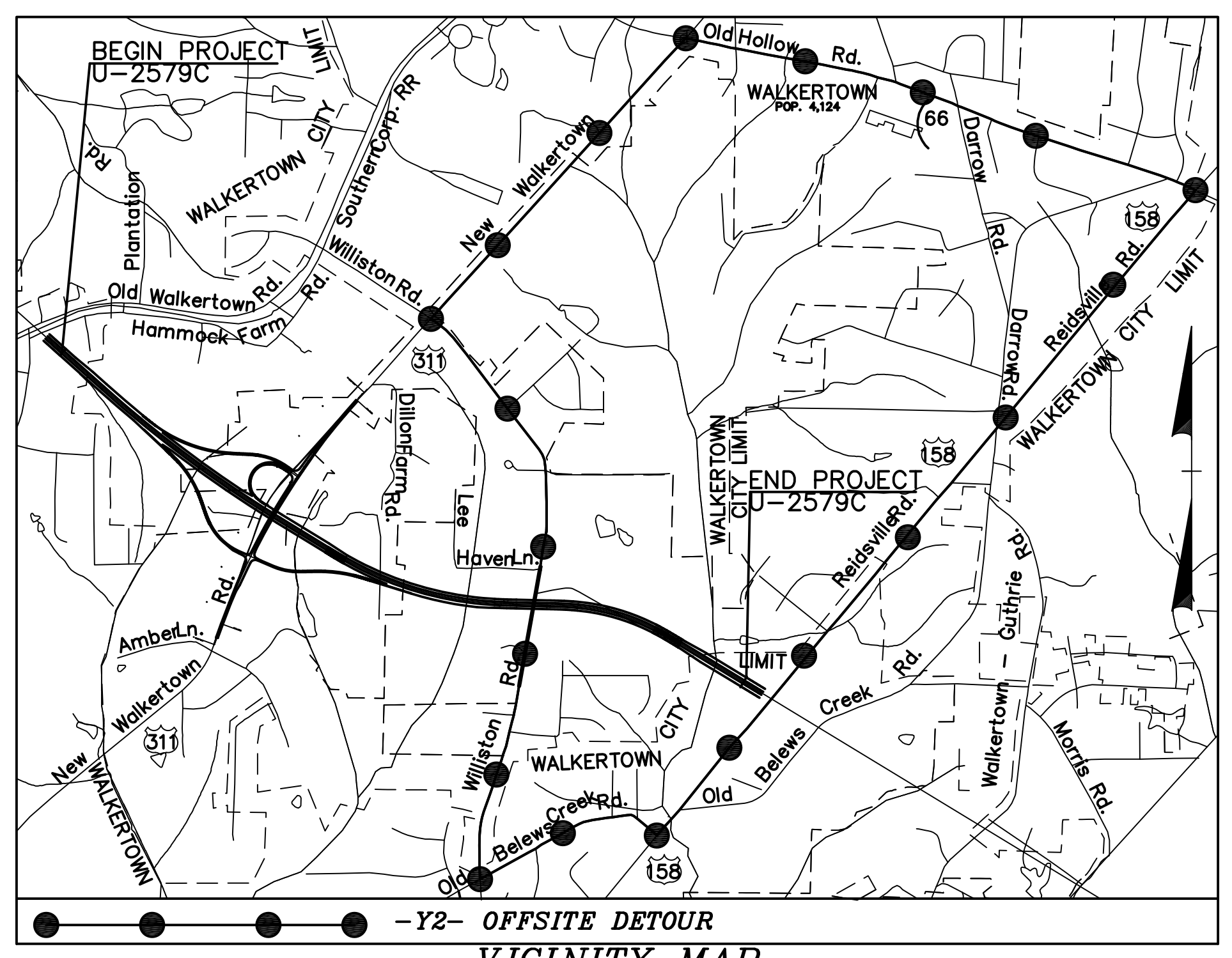
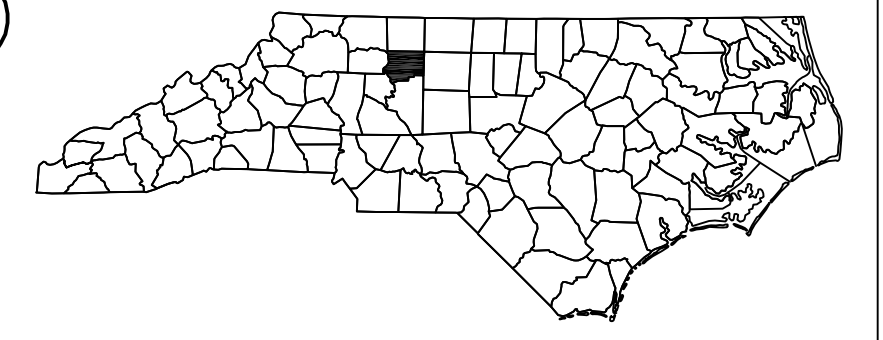
**This file or an individual page  
shall not be considered a certified document.**

# STATE OF NORTH CAROLINA DIVISION OF HIGHWAYS

## UTILITY CONSTRUCTION PLANS FORSYTH COUNTY

LOCATION: WINSTON - SALEM NORTHERN BELTWAY (EASTERN SECTION)  
FROM US 311 TO US 158 (FUTURE I-74)

TYPE OF WORK: UTILITIES

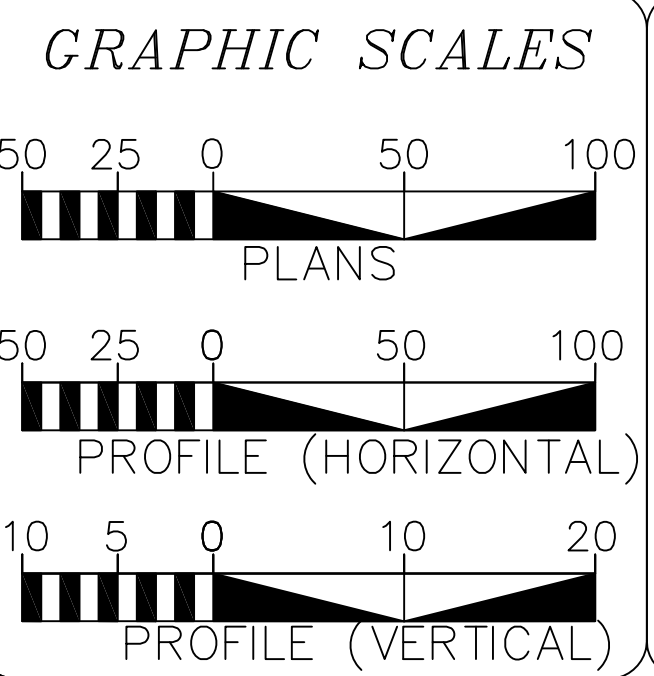


**BEGIN PROJ. U-2579C**  
-L- STA. 373+00.00

TO  
SR 2211  
BAUX MOUNTAIN  
ROAD

**END PROJ. U-2579C**  
-L- STA. 478+00.00

THIS IS A CONTROLLED-ACCESS PROJECT WITH ACCESS BEING LIMITED TO INTERCHANGES  
A PORTION OF THIS PROJECT IS WITHIN THE MUNICIPAL BOUNDARIES OF WALKERTOWN  
CLEARING ON THIS PROJECT SHALL BE PERFORMED TO THE LIMITS ESTABLISHED BY METHOD III



**INDEX OF SHEETS**

SHEET NO.	DESCRIPTION
UC-1	TITLE SHEET
UC-2	UTILITY SYMBOLOGY
UC-3	NOTES
UC-3A THRU UC-3B	DETAILS
UC-4 THRU UC-9	UTILITY CONSTRUCTION SHEETS
UC-10 THRU UC-12	PROFILE SHEETS

**WATER AND SEWER OWNERS ON PROJECT**

- (1) SEWER: WINSTON-SALEM/FORSYTH COUNTY UTILITIES COMMISSION
- (2) WATER: WINSTON-SALEM/FORSYTH COUNTY UTILITIES COMMISSION

SEAL

SIGNATURE: \_\_\_\_\_ P.E.

PREPARED IN THE OFFICE OF:  
**ENGINEERING DIVISION  
CITY OF WINSTON-SALEM**

P.O. BOX 2511  
WINSTON-SALEM, NC 27102  
PHONE: (336) 727-8000  
FAX: (336) 727-2361

**ASHLEY S. WEBB, P.E.** PROJECT ENGINEER

09/08/09  
 TIP PROJECT: U-2579C  
 \$\$\$SYTIME\$\$\$\$\$  
 \$\$\$DGN\$\$\$\$\$  
 \$\$\$USERNAME\$\$\$\$\$

# STATE OF NORTH CAROLINA DIVISION OF HIGHWAYS

## UTILITIES PLAN SHEET SYMBOLS

### PROPOSED WATER SYMBOLS

Water Line (Sized as Shown)	
11 1/4 Degree Bend	
22 1/2 Degree Bend	
45 Degree Bend	
90 Degree Bend	
Plug	
Tee	
Reducer	
Gate Valve	
Tapping Valve	
Blowoff Assembly	
Fire Hydrant	
Relocate Fire Hydrant	
Remove Fire Hydrant	
Water Meter	
Relocate Water Meter	
Remove Water Meter	

### PROPOSED SEWER SYMBOLS

Gravity Sewer Line (Sized as Shown)	
Manhole (Sized per Note)	

### PROPOSED MISCELLANEOUS UTILITIES SYMBOLS

Thrust Block	
Air Release Valve	
Plan Note	
Pay Item Note	

Encasement by Open Cut	
Encasement	

### EXISTING UTILITIES SYMBOLS

Power Pole		*Underground Power Line	
Telephone Pole		*Underground Telephone Cable	
Joint Use Pole		*Underground Telephone Conduit	
Utility Pole		*Underground Fiber Optics Telephone Cable	
Utility Pole with Base		*Underground TV Cable	
H-Frame Pole		*Underground Fiber Optics TV Cable	
Power Transmission Line Tower		*Underground Gas Pipeline	
Water Manhole		Aboveground Gas Pipeline	
Power Manhole		*Underground Water Line	
Telephone Manhole		Aboveground Water Line	
Sanitary Sewer Manhole		*Underground Gravity Sanitary Sewer Line	
Hand Hole for Cable		Aboveground Gravity Sanitary Sewer Line	
Power Transformer		*Underground SS Forced Main Line	
Telephone Pedestal		Underground Unknown Utility Line	
CATV Pedestal		SUE Test Hole	
Gas Valve		Water Meter	
Gas Meter		Water Valve	
Located Miscellaneous Utility Object		Fire Hydrant	
Abandoned According to Utility Records		Sanitary Sewer Cleanout	
End of Information			

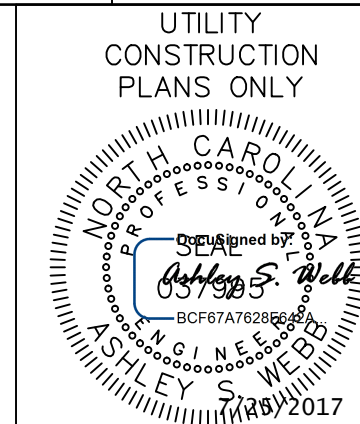
\*For Existing Utilities  
 Utility Line Drawn from Record (Type as Shown) \_\_\_\_\_  
 Designated Utility Line (Type as Shown) \_\_\_\_\_

8/17/99

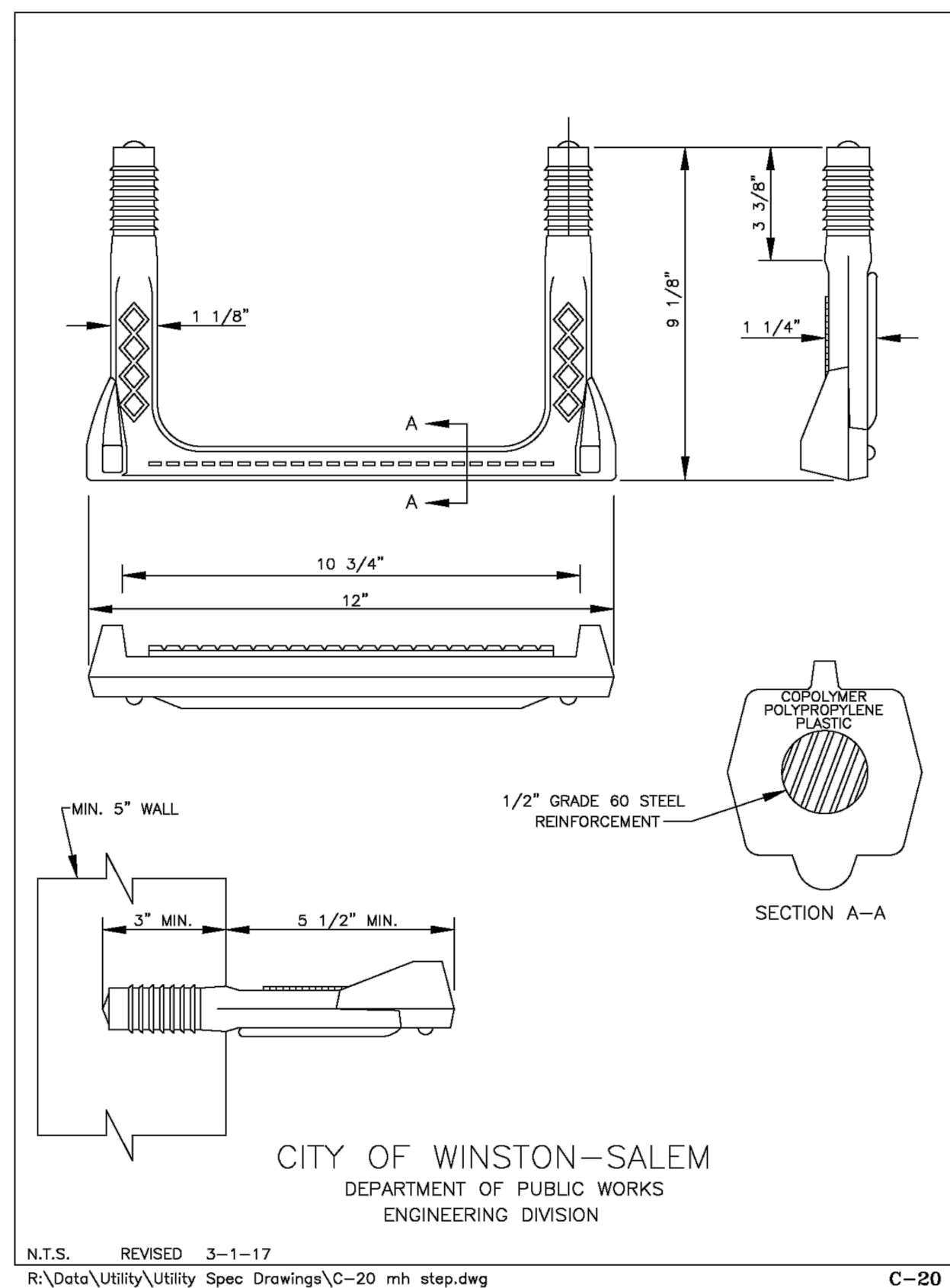
REVISIONS

SYSTEMS  
 DIVISION  
 SUSTAINMENT  
 REV: 2/1/2012

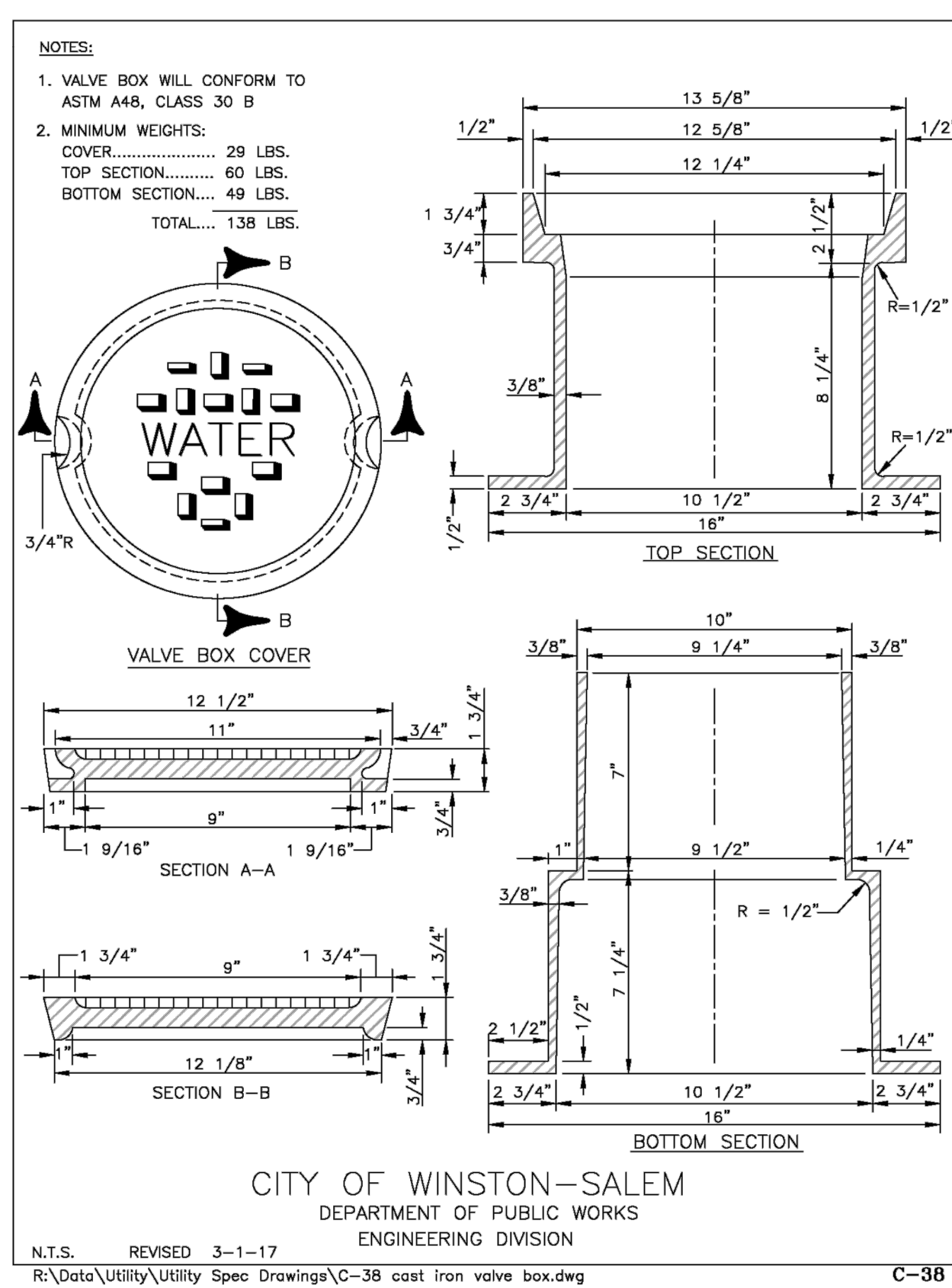




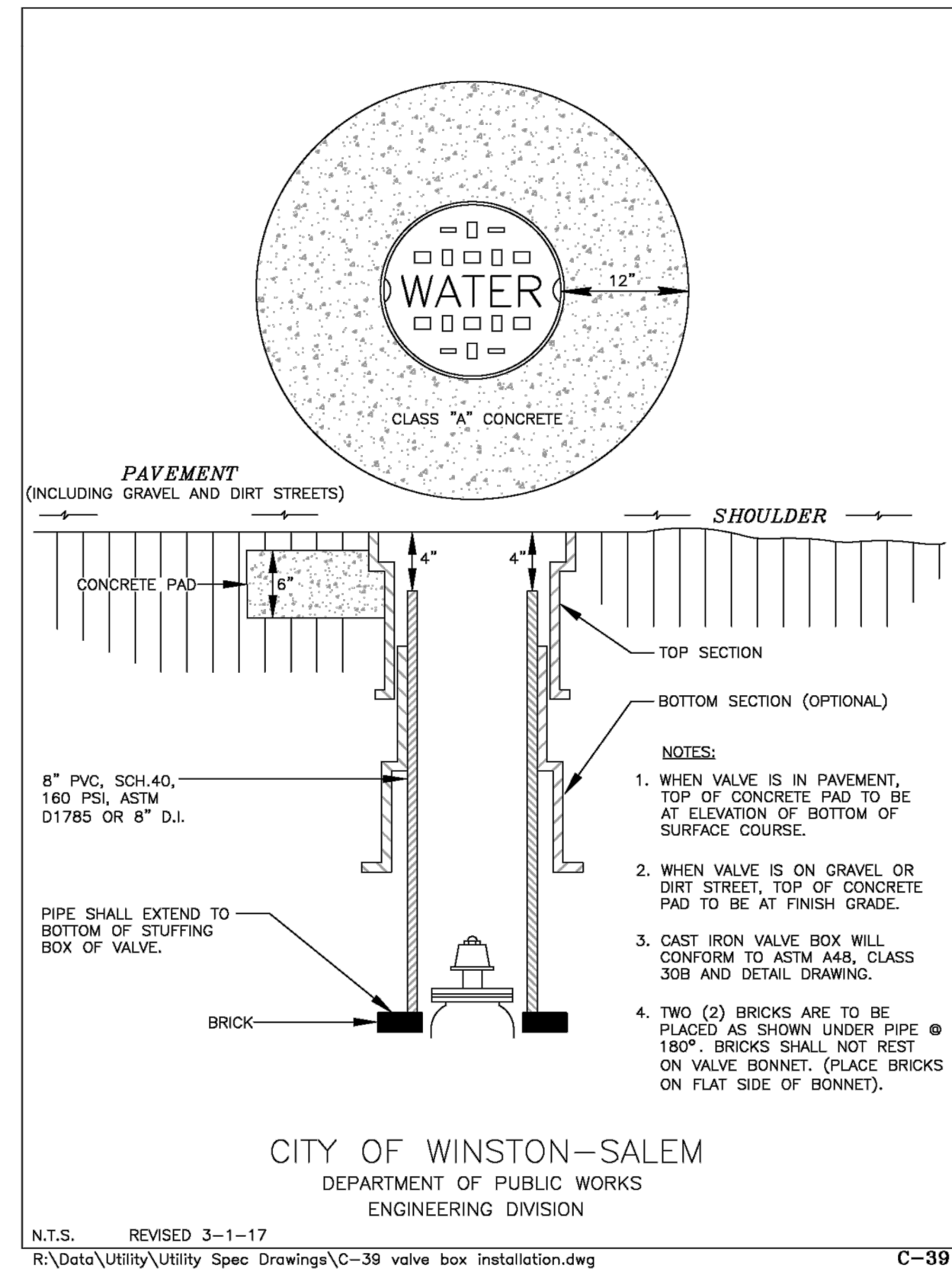
Polypropylene Manhole Step



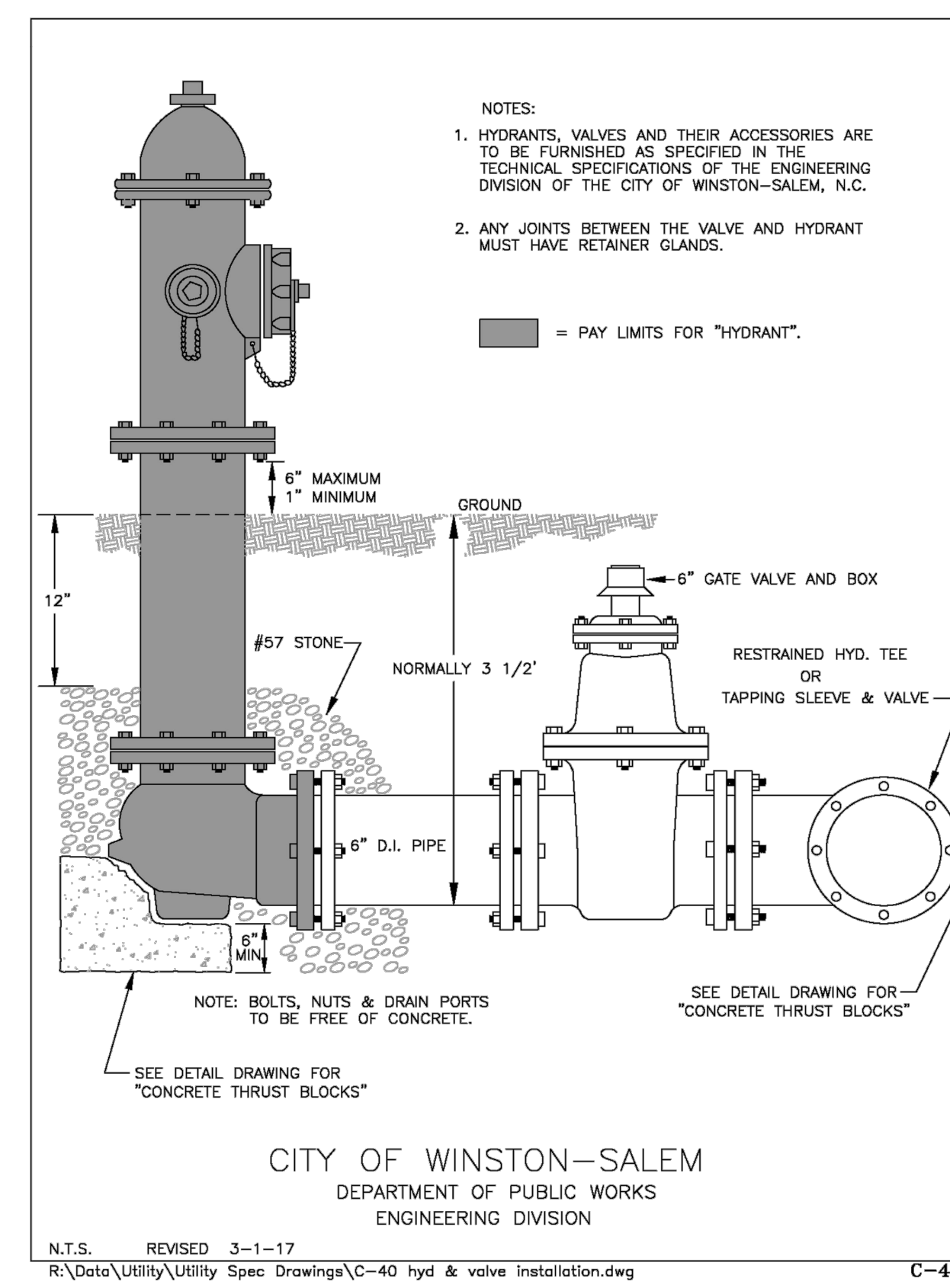
Cast Iron Valve Box



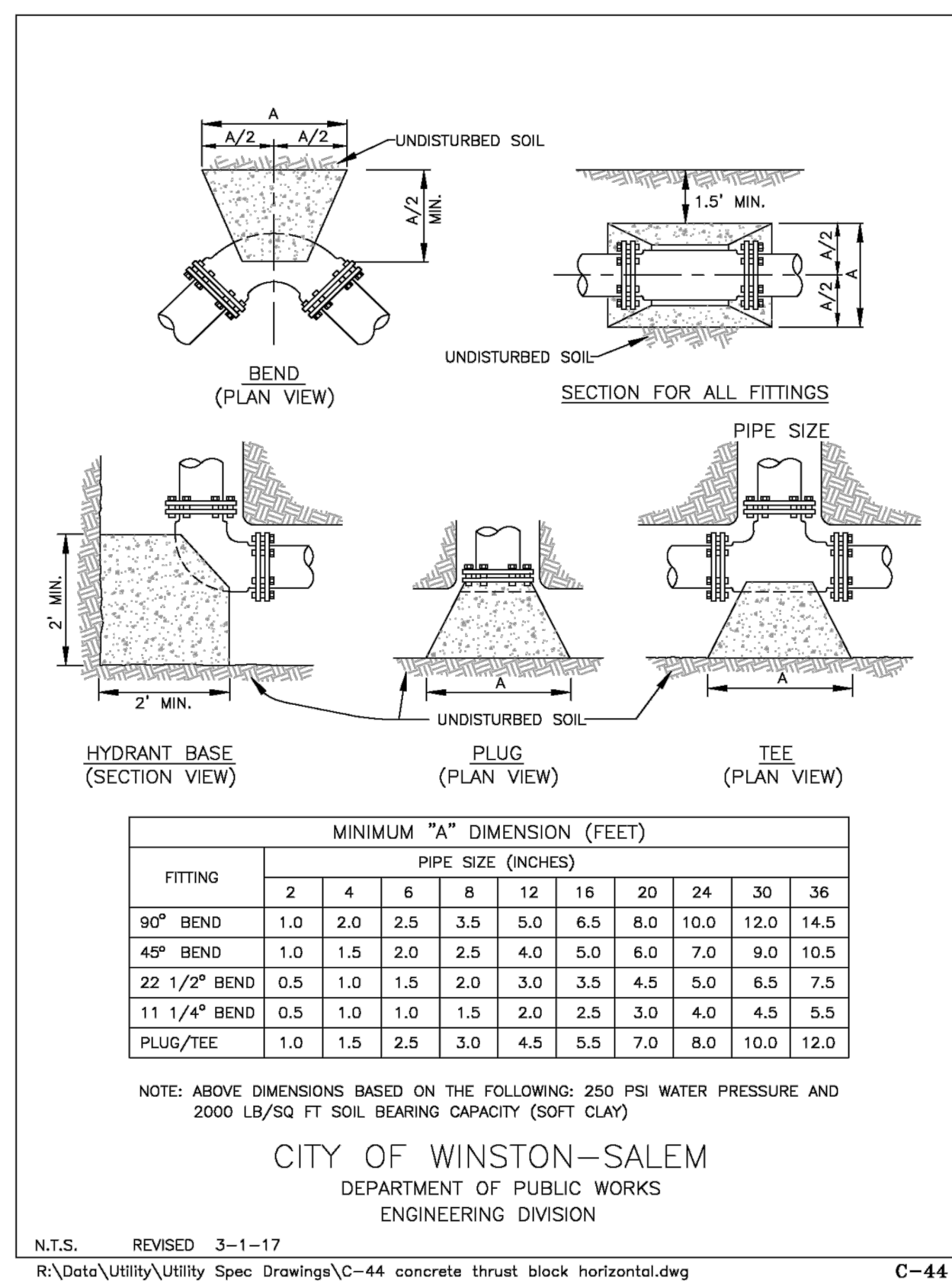
Valve Box Installation



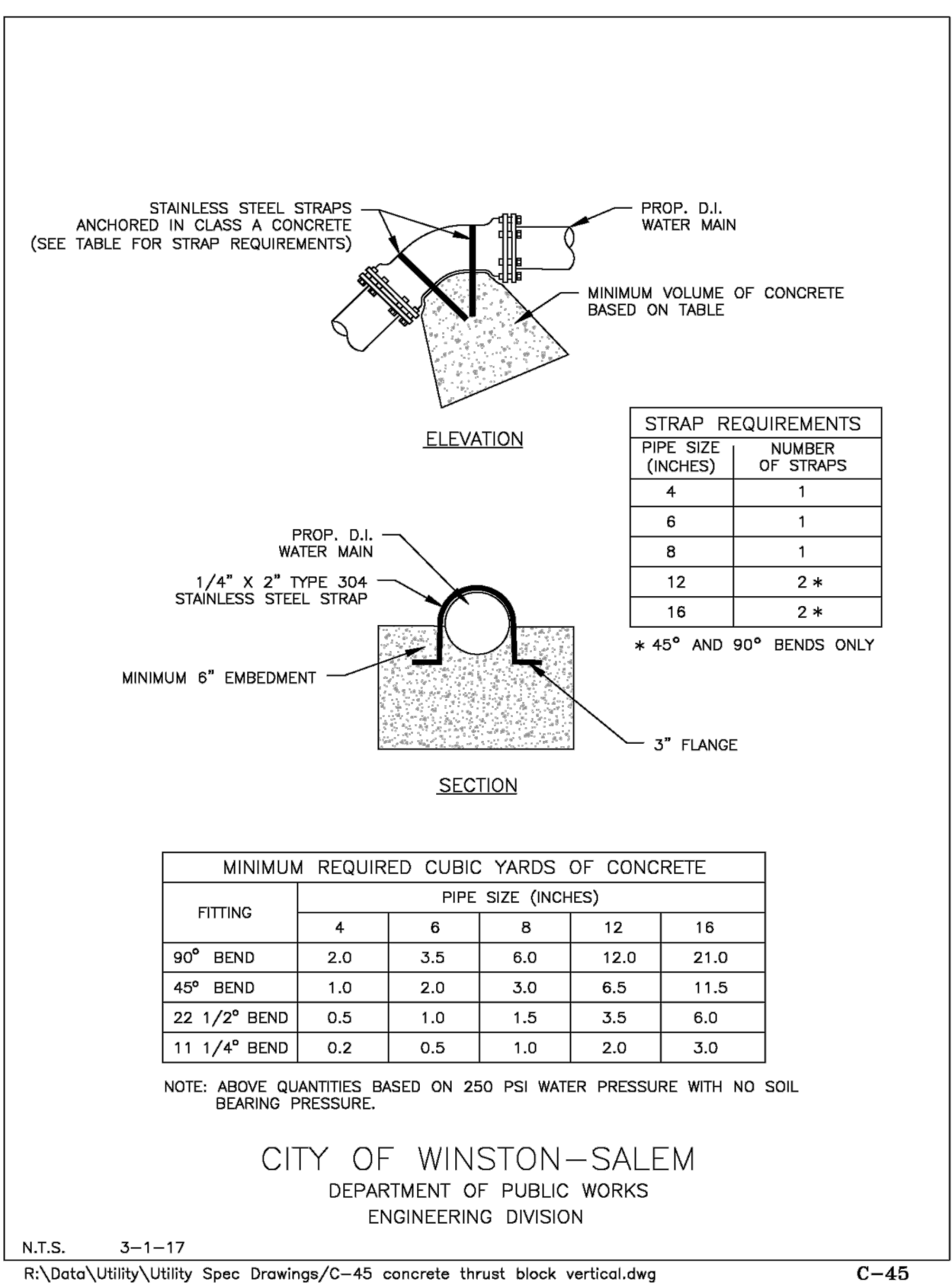
Hydrant and Valve Installation



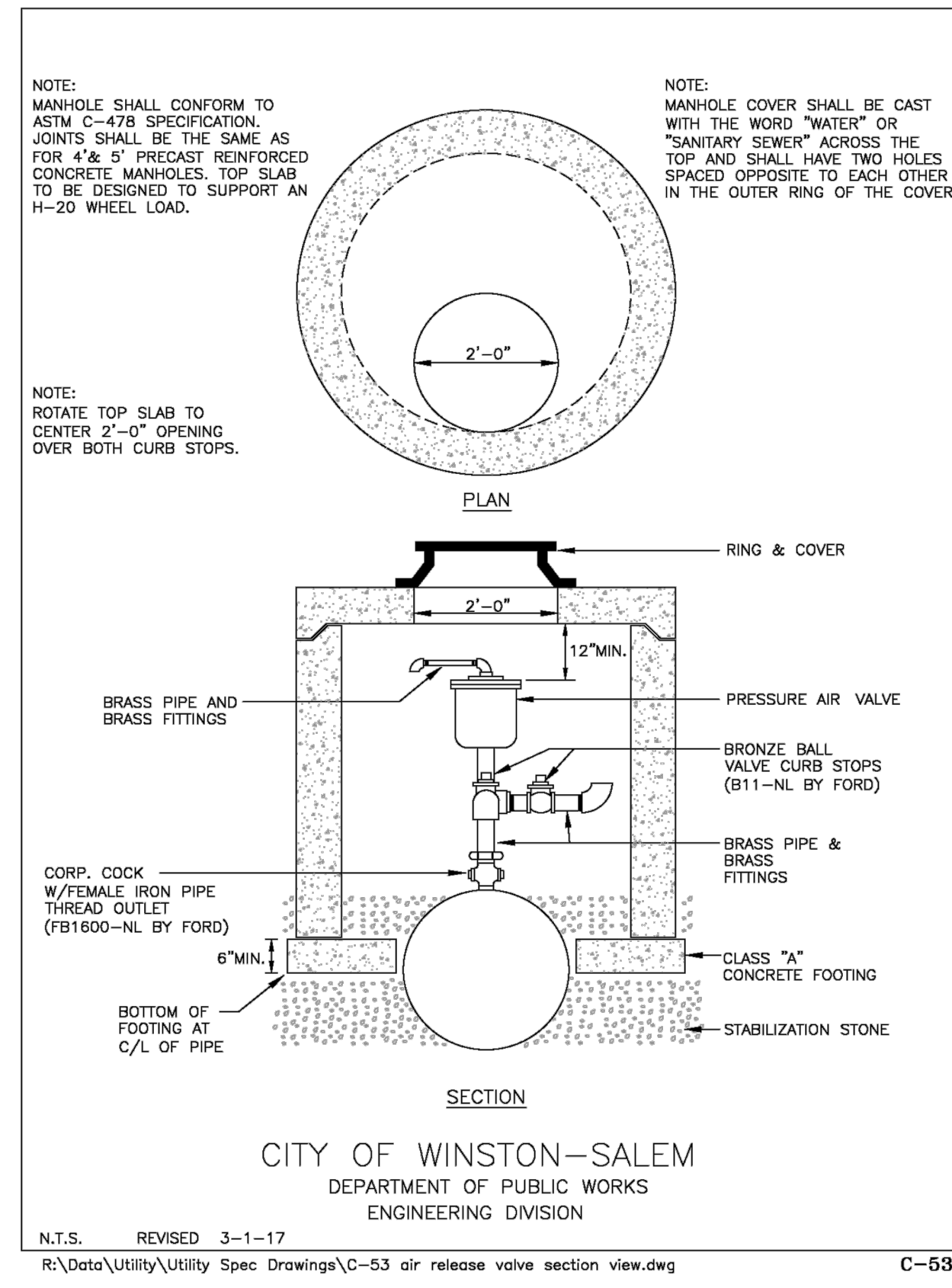
Concrete Thrust Blocks for Horizontal Bends



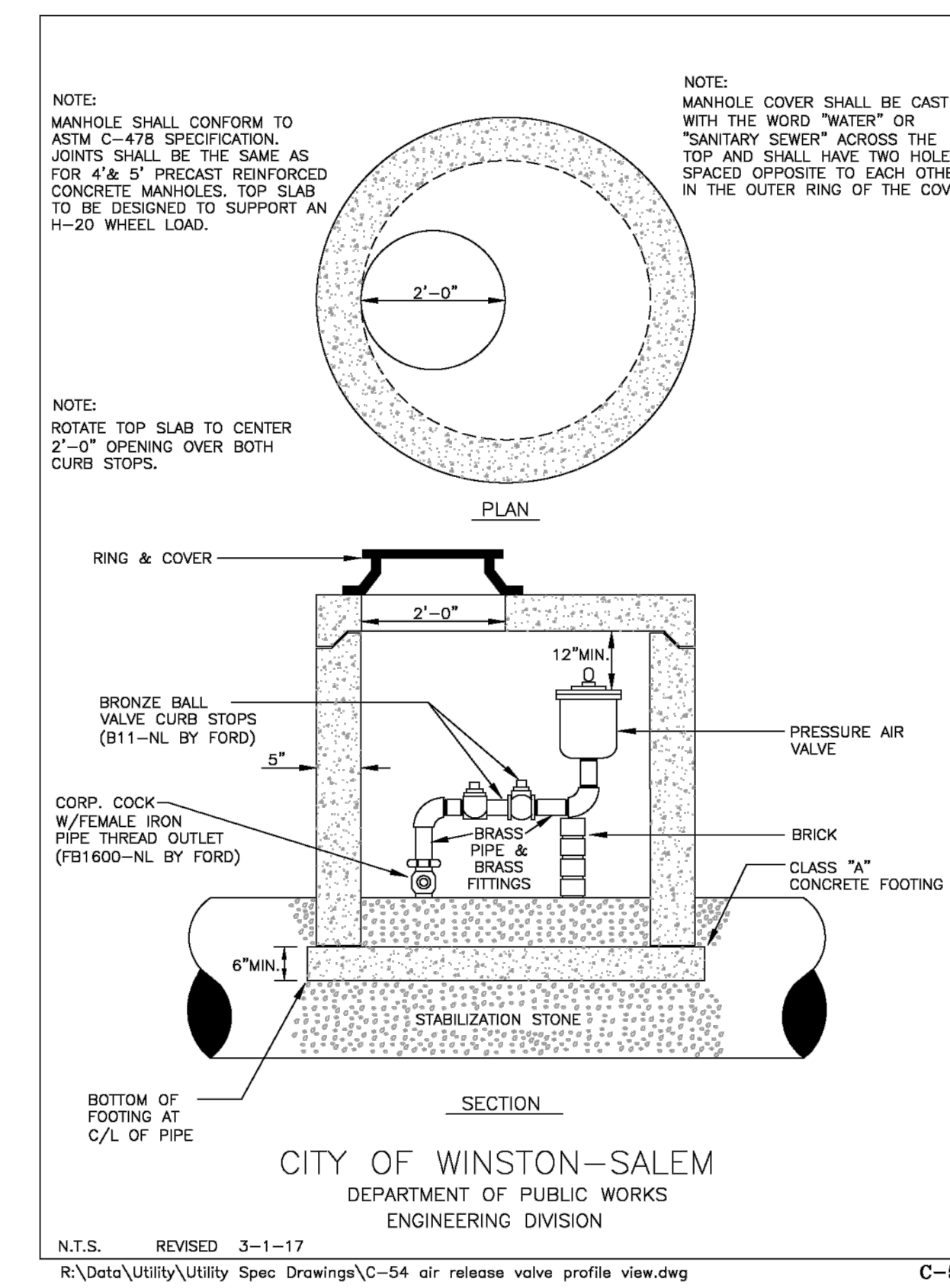
Concrete Thrust Blocks w/ Anchors for Top Vertical Bends



Air Release Valve (Section View)

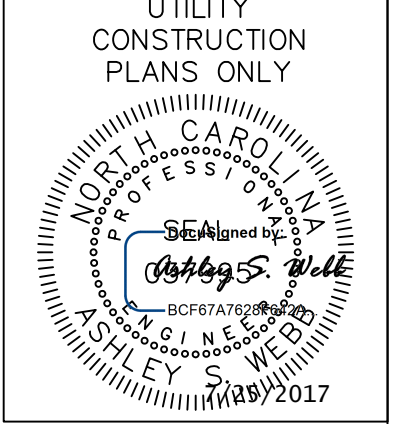


Air Release Valve (Profile View)

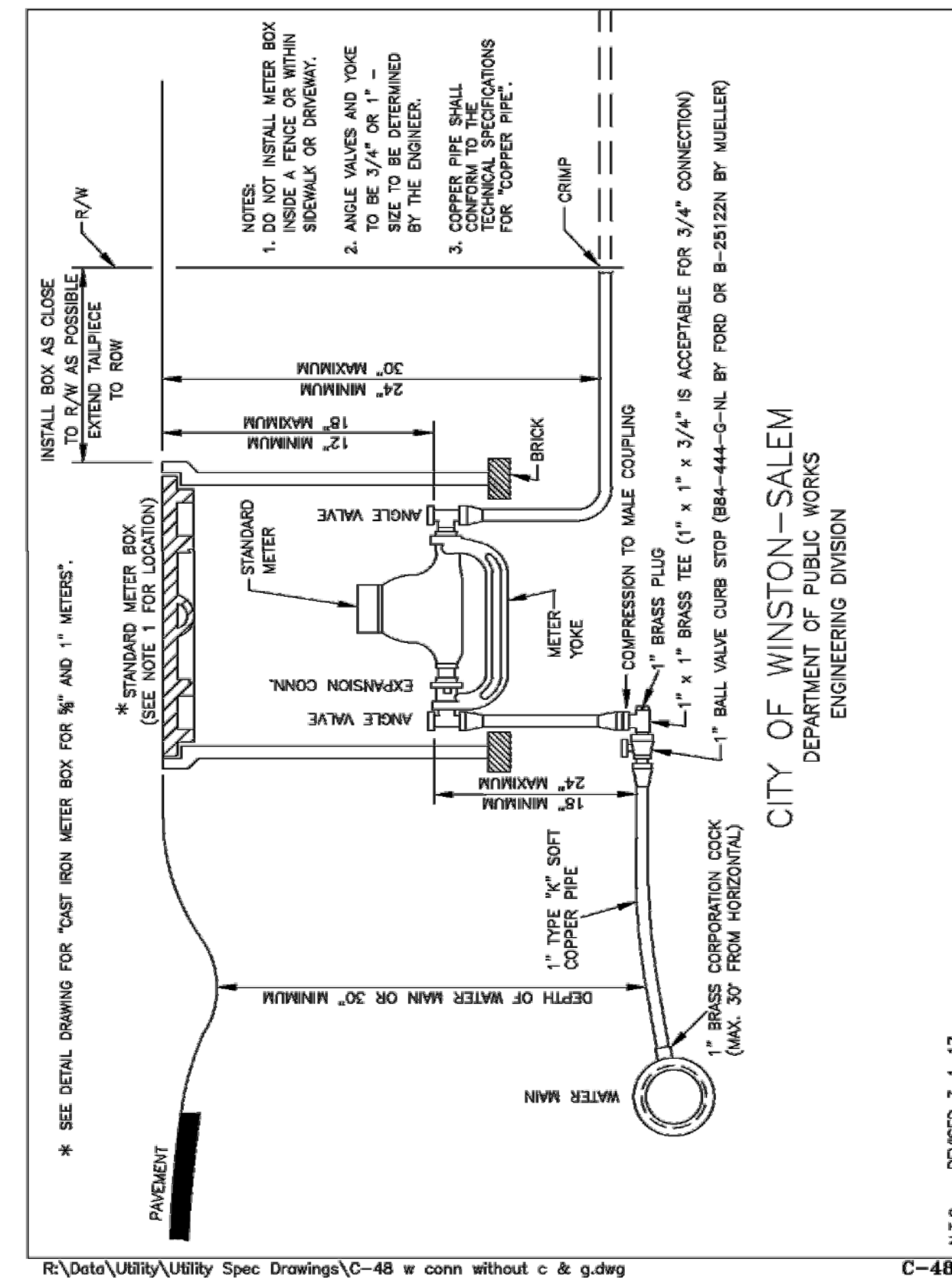


REVISIONS

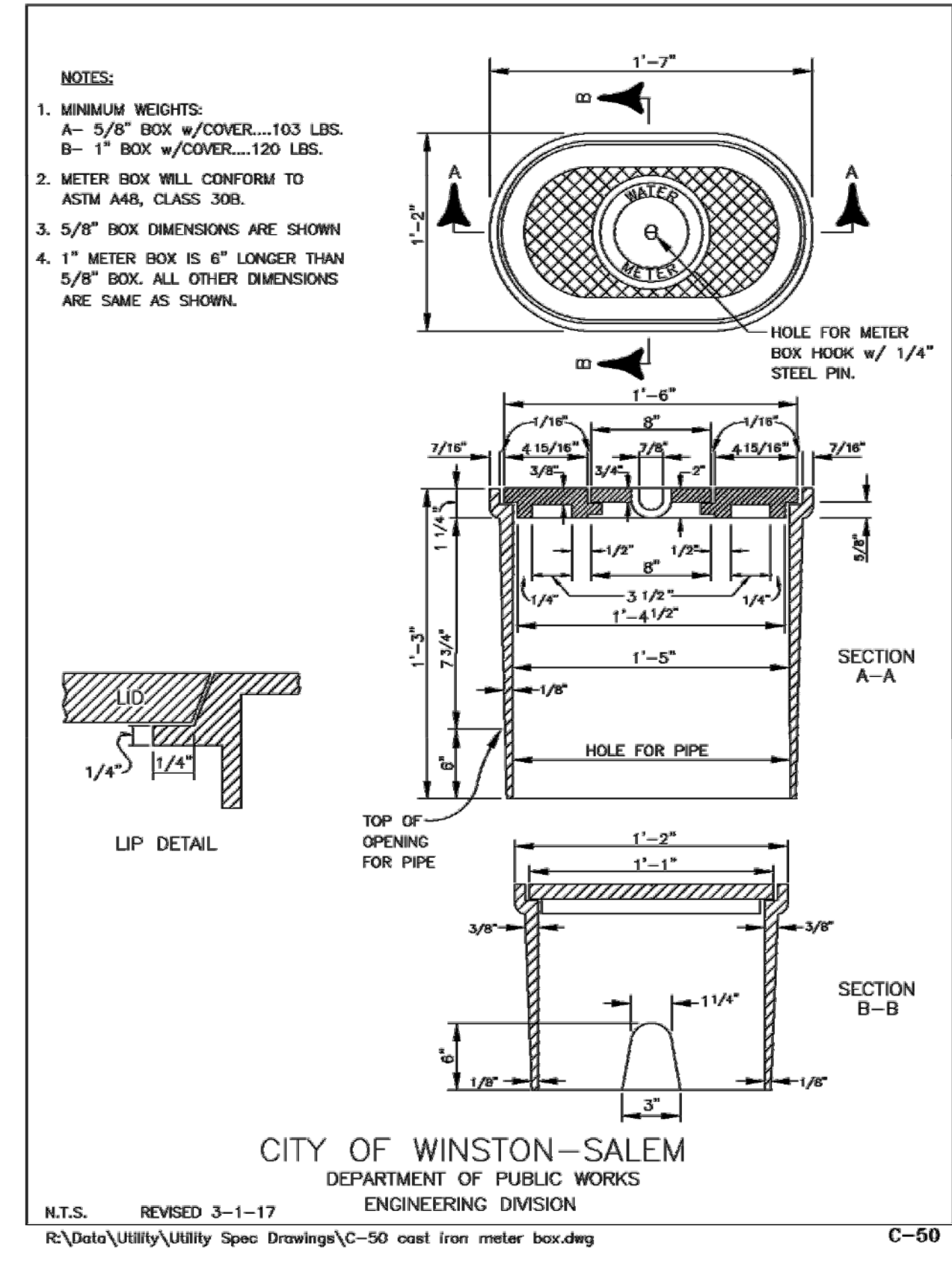
8/17/99



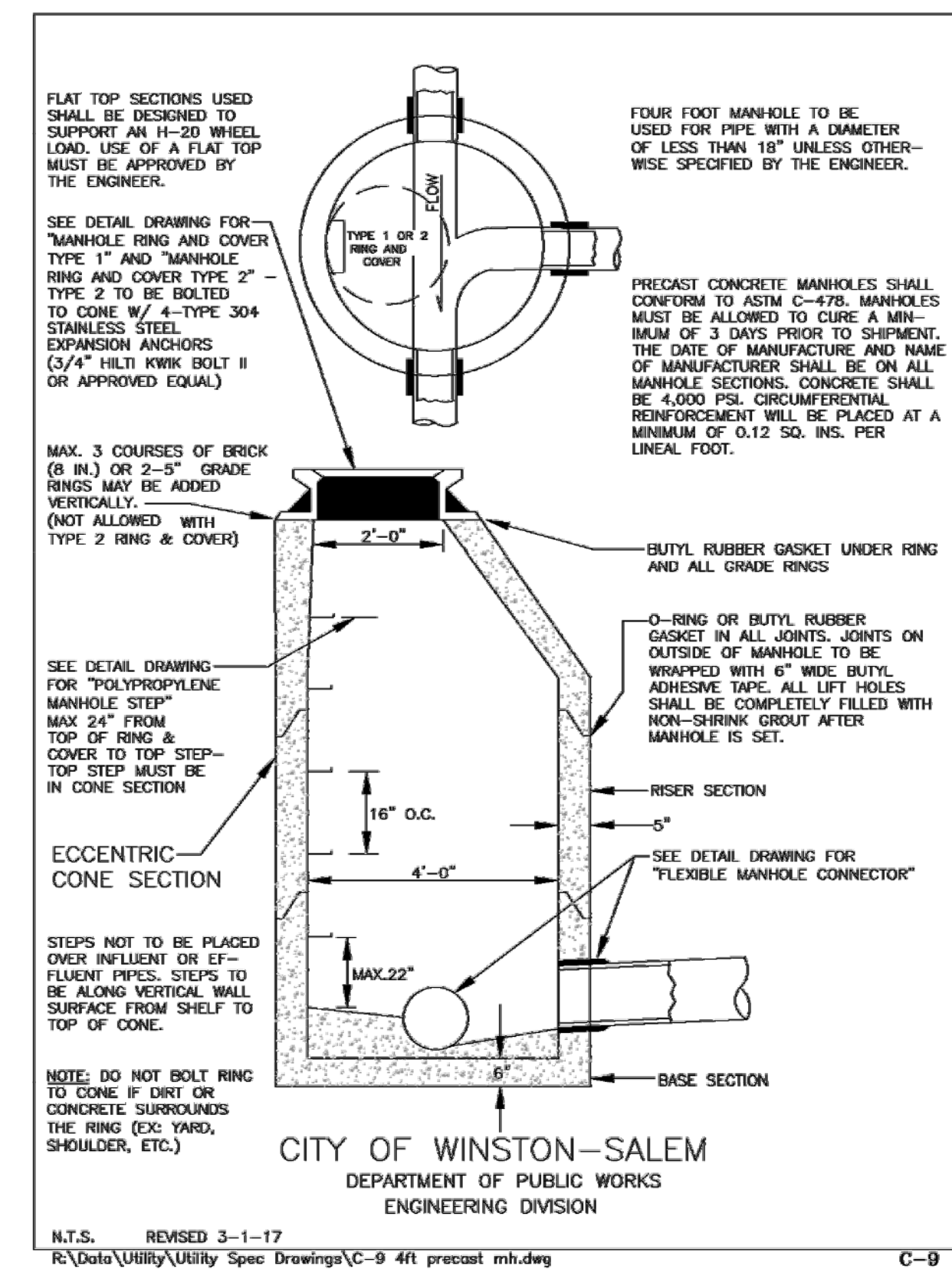
3/4" and 1" Water Connection (Without Curb & Gutter / Single Family)



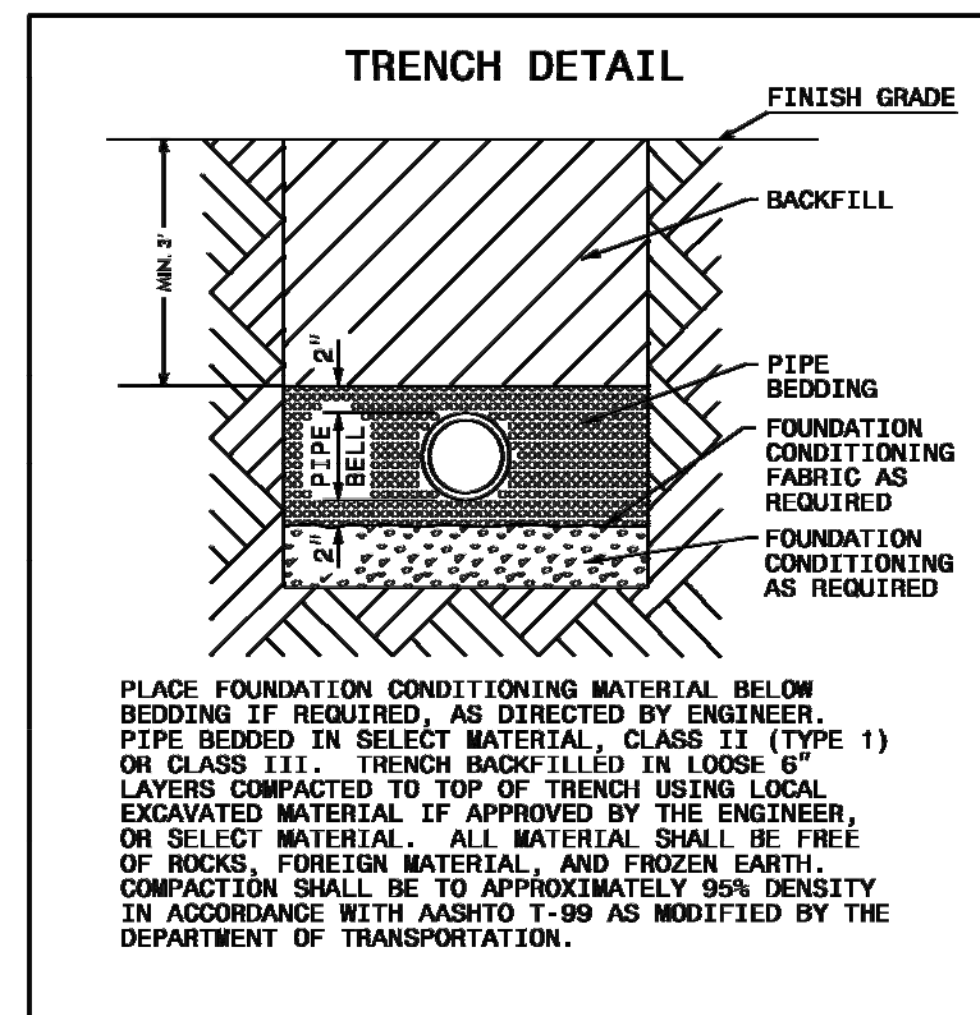
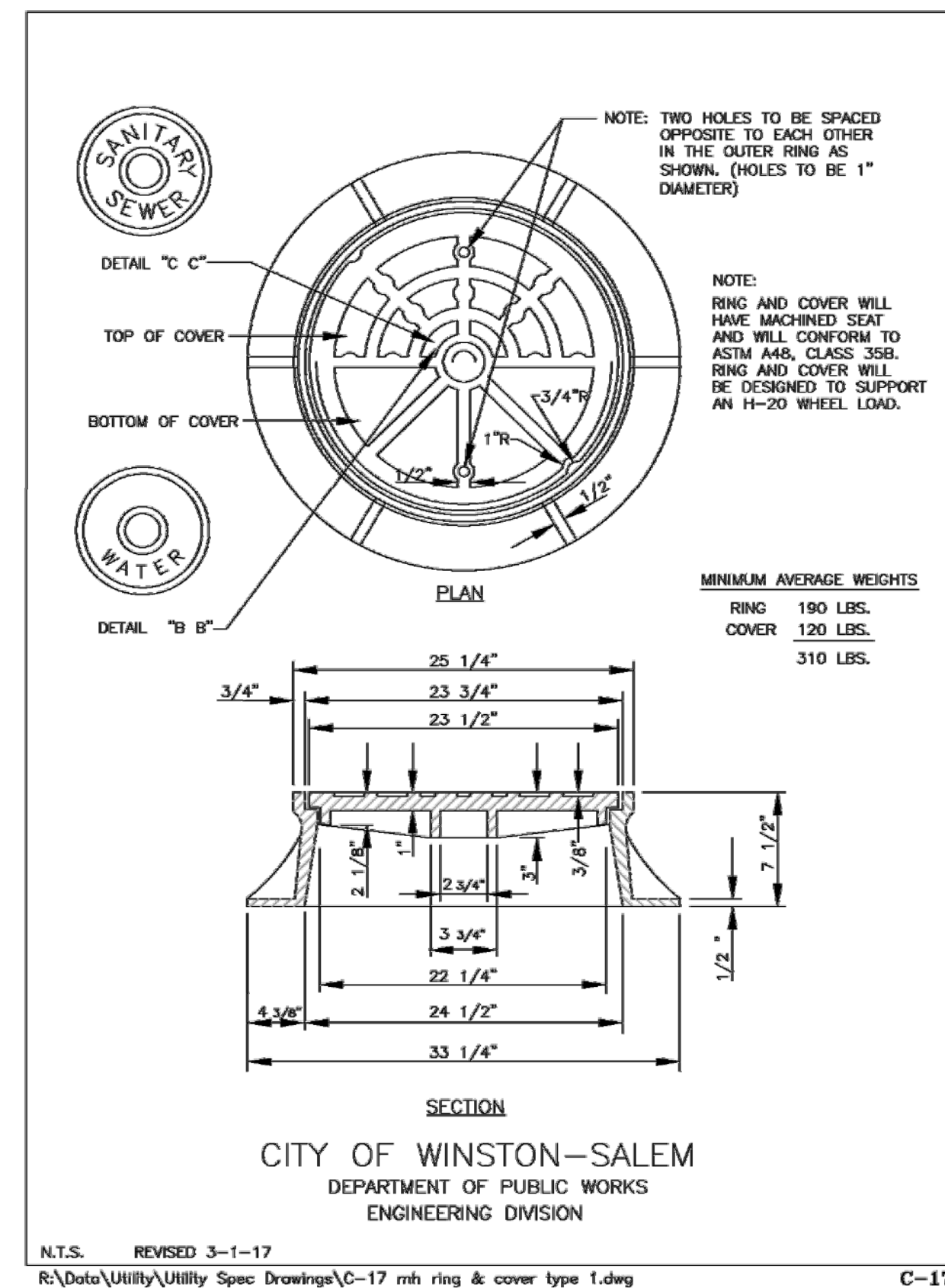
Cast Iron Meter Box for 5/8" and 1" Meters



4' Precast Reinforced Concrete Manhole



Manhole Ring and Cover (Type 1)



MAXIMUM TRENCH WIDTH AT TOP OF PIPE

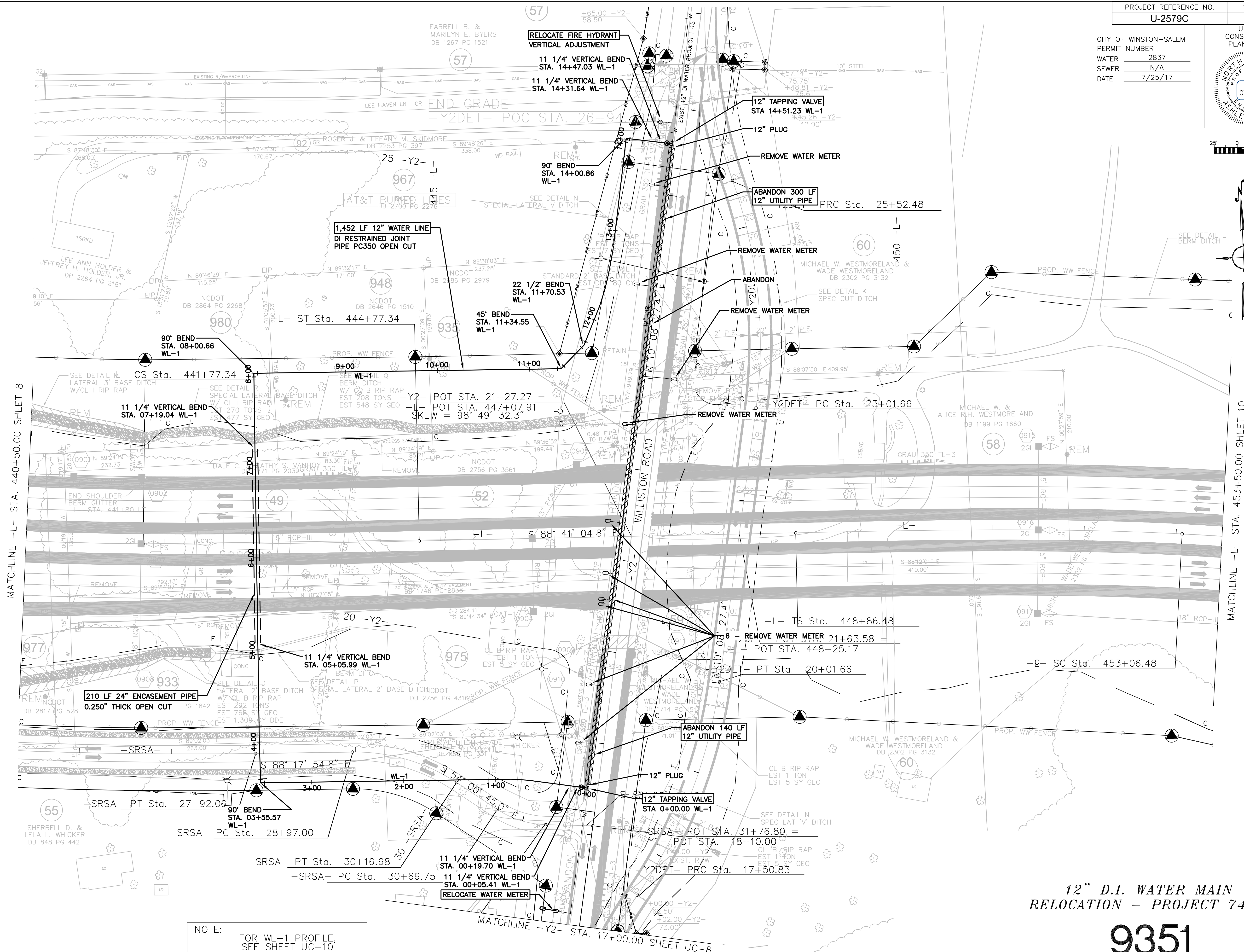
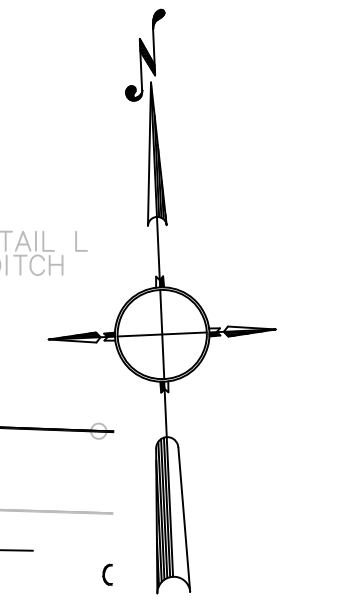
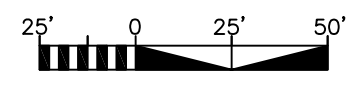
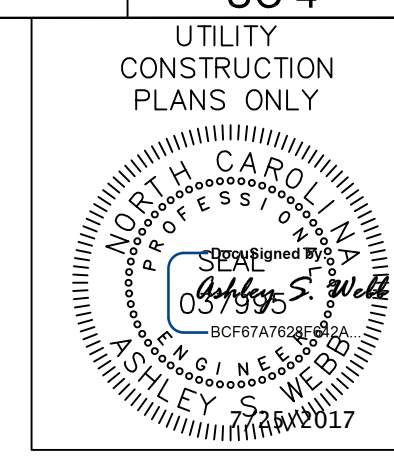
NOMINAL PIPE SIZE (INCHES)	TRENCH WIDTH (INCHES)	NOMINAL PIPE SIZE (INCHES)	TRENCH WIDTH (INCHES)
4	28	20	44
6	30	24	48
8	32	30	54
10	34	36	60
12	36	42	66
14	38	48	72
16	40	54	78
18	42		

REVISIONS

8/17/99

SYNOPSIS OF REVISIONS

CITY OF WINSTON-SALEM  
 PERMIT NUMBER 2837  
 SEWER N/A  
 DATE 7/25/17



REVISIONS

MATCHLINE -L- STA. 440+50.00 SHEET 8

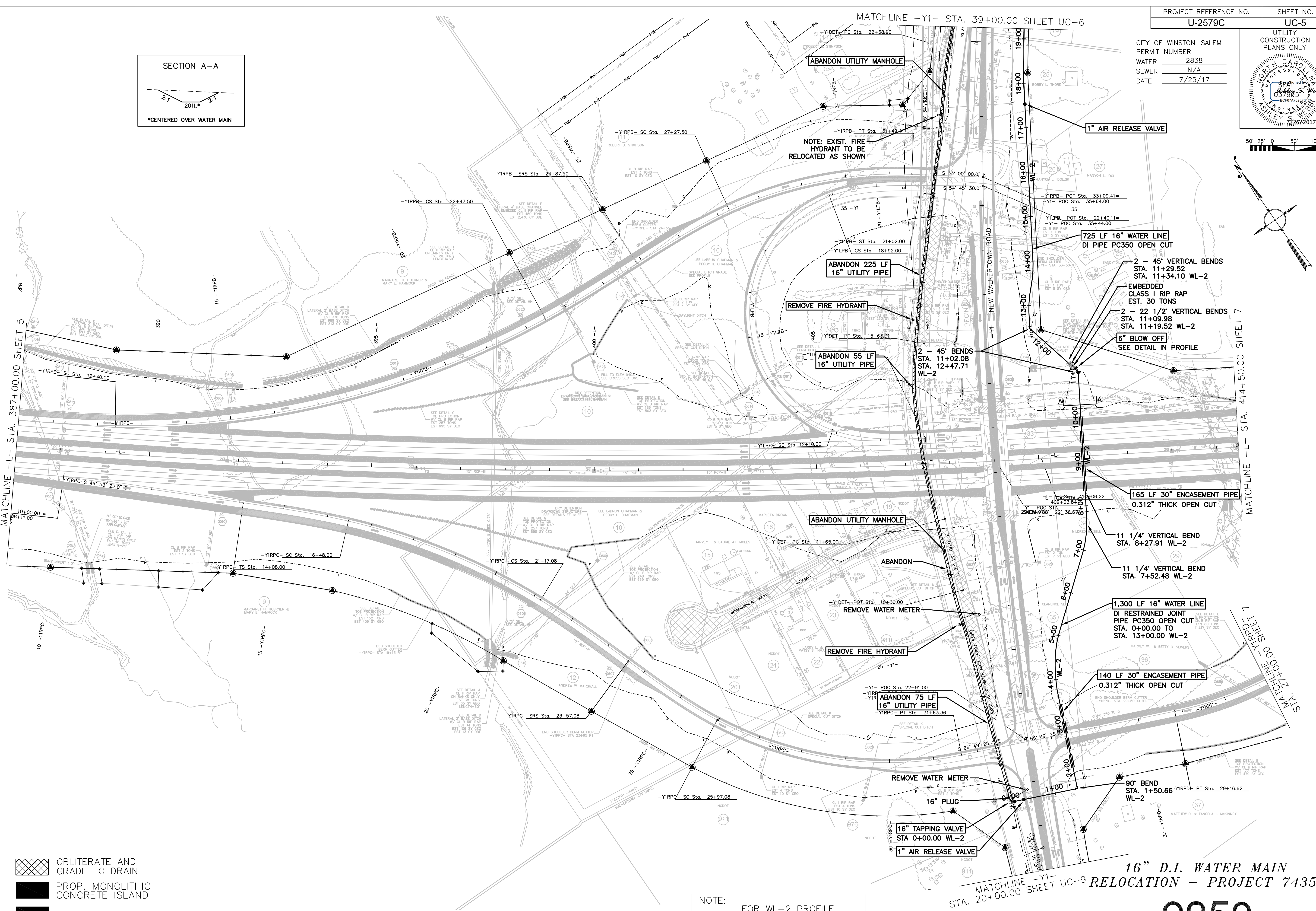
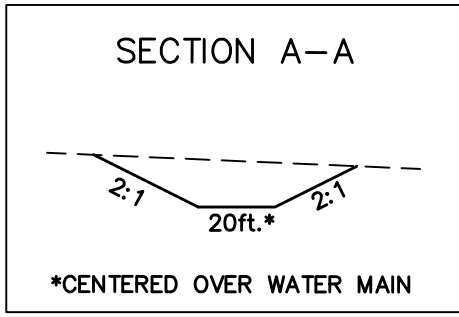
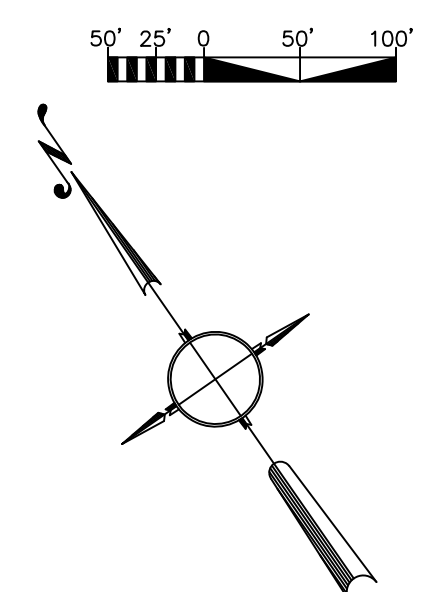
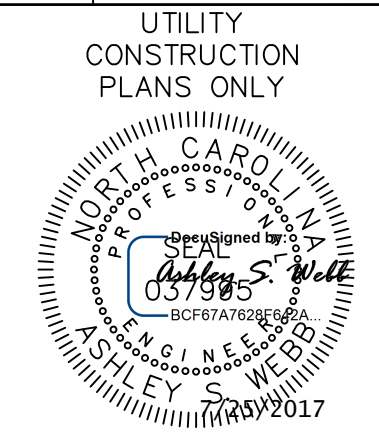
MATCHLINE -L- STA. 453+50.00 SHEET 10

NOTE:  
 FOR WL-1 PROFILE,  
 SEE SHEET UC-10

12" D.I. WATER MAIN  
 RELOCATION - PROJECT 74351

9351

CITY OF WINSTON-SALEM  
 PERMIT NUMBER 2838  
 WATER N/A  
 SEWER N/A  
 DATE 7/25/17



- OBLITERATE AND GRADE TO DRAIN
- PROP. MONOLITHIC CONCRETE ISLAND
- PAVED SHOULDER

NOTE:  
 FOR WL-2 PROFILE,  
 SEE SHEET UC-11&12

MATCHLINE -Y1- STA. 20+00.00 SHEET UC-9  
 16" D.I. WATER MAIN RELOCATION - PROJECT 74352

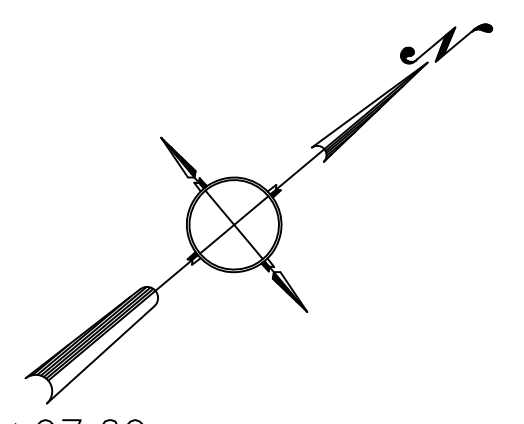
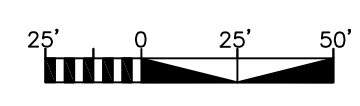
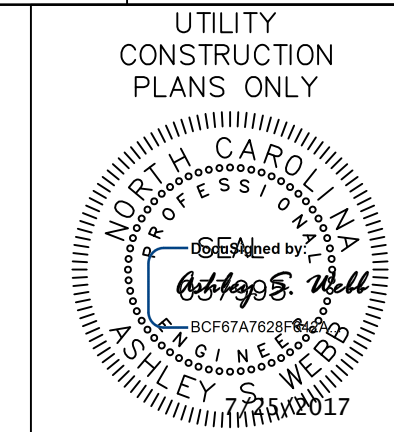
# 9352

REVISIONS

\$\$\$\$\$SYTIME\$\$\$\$\$G\$\$\$\$\$M\$\$\$\$\$W\$\$\$\$\$A\$\$\$\$\$R\$\$\$\$\$E\$\$\$\$\$

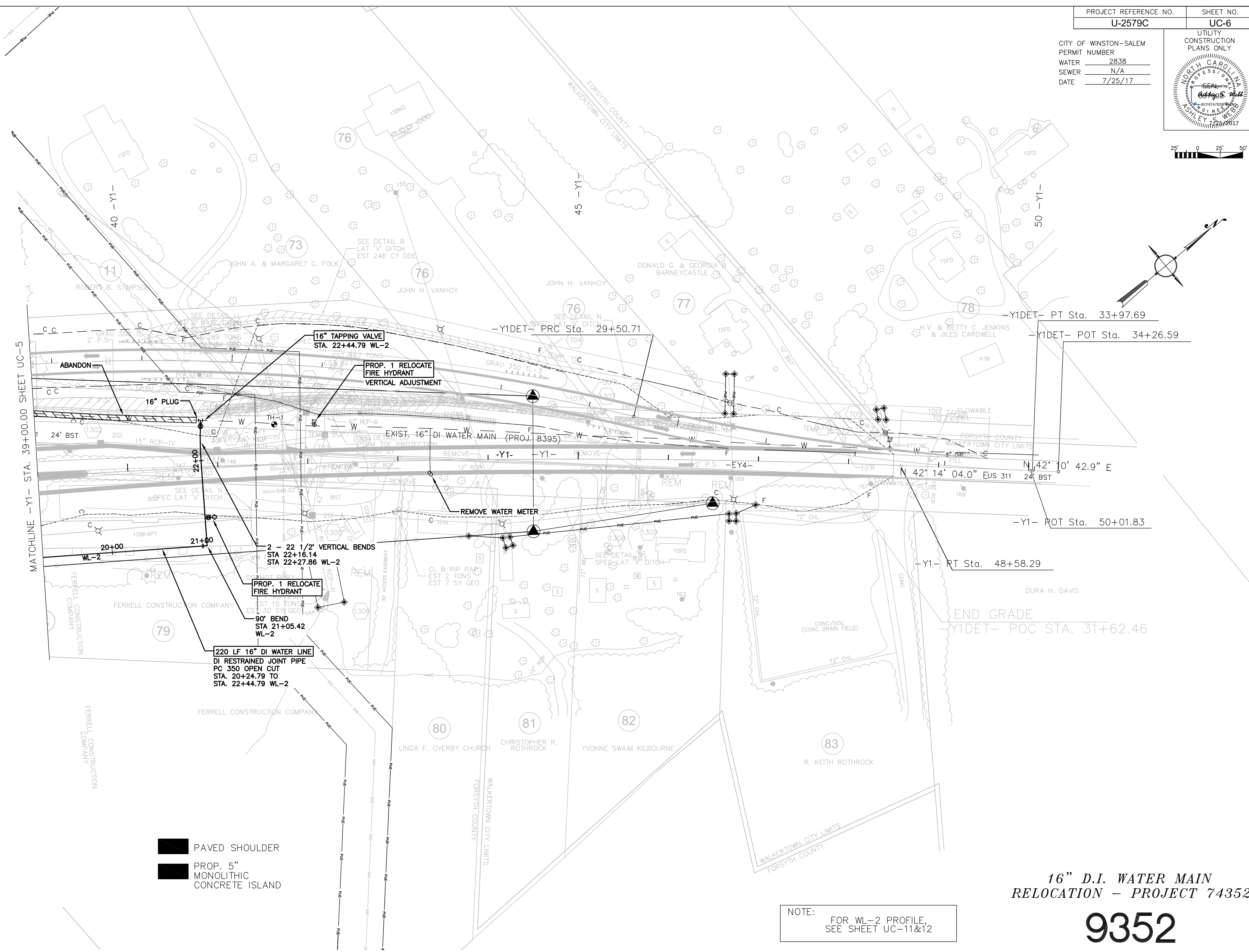


CITY OF WINSTON-SALEM  
 PERMIT NUMBER 2838  
 WATER N/A  
 SEWER N/A  
 DATE 7/25/17



8/17/99

REVISIONS



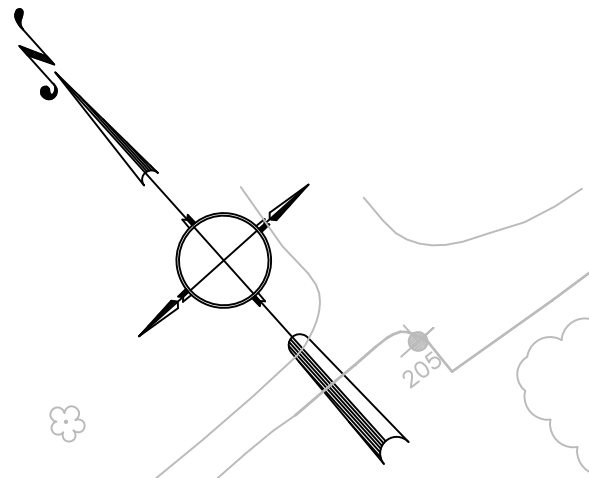
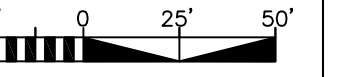
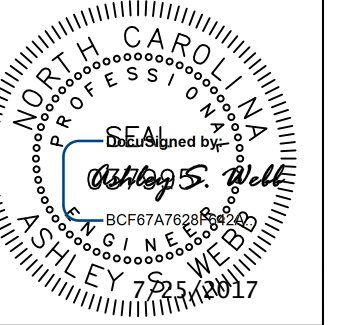
 PAVED SHOULDER  
 PROP. 5" MONOLITHIC CONCRETE ISLAND

NOTE:  
 FOR WL-2 PROFILE,  
 SEE SHEET UC-11&12

**16" D.I. WATER MAIN  
 RELOCATION - PROJECT 74352**

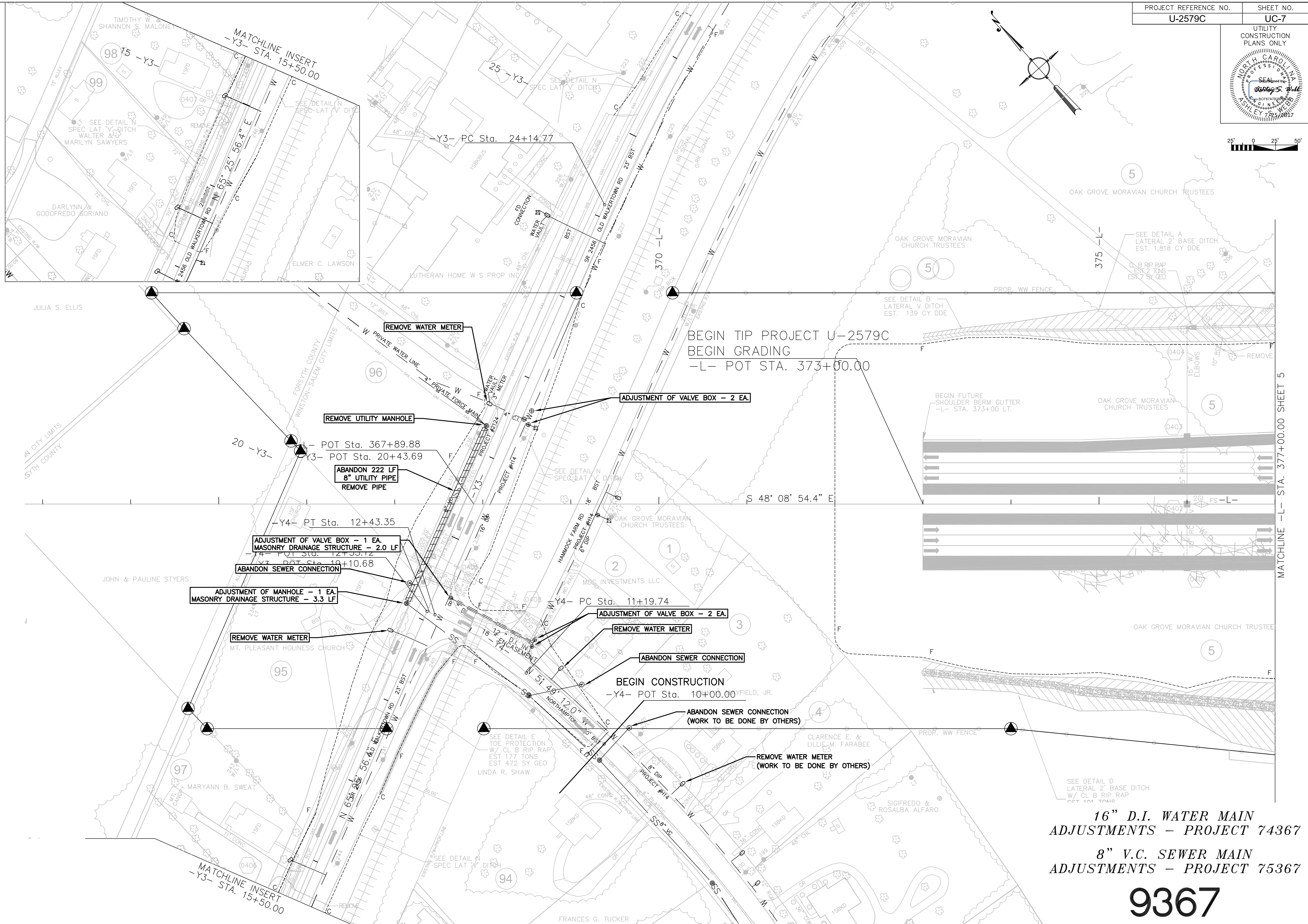
**9352**

UTILITY CONSTRUCTION PLANS ONLY



8/17/99

REVISIONS



16" D.I. WATER MAIN  
ADJUSTMENTS - PROJECT 74367

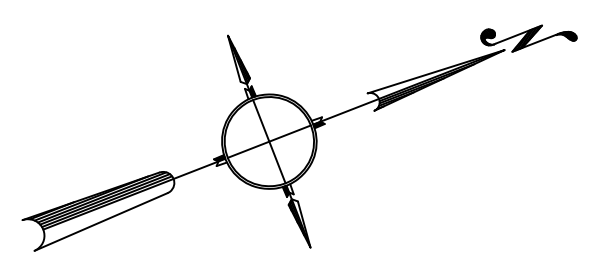
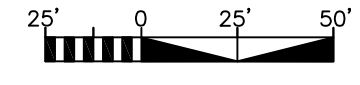
8" V.C. SEWER MAIN  
ADJUSTMENTS - PROJECT 75367

9367

SYSTEMS ENGINEERING



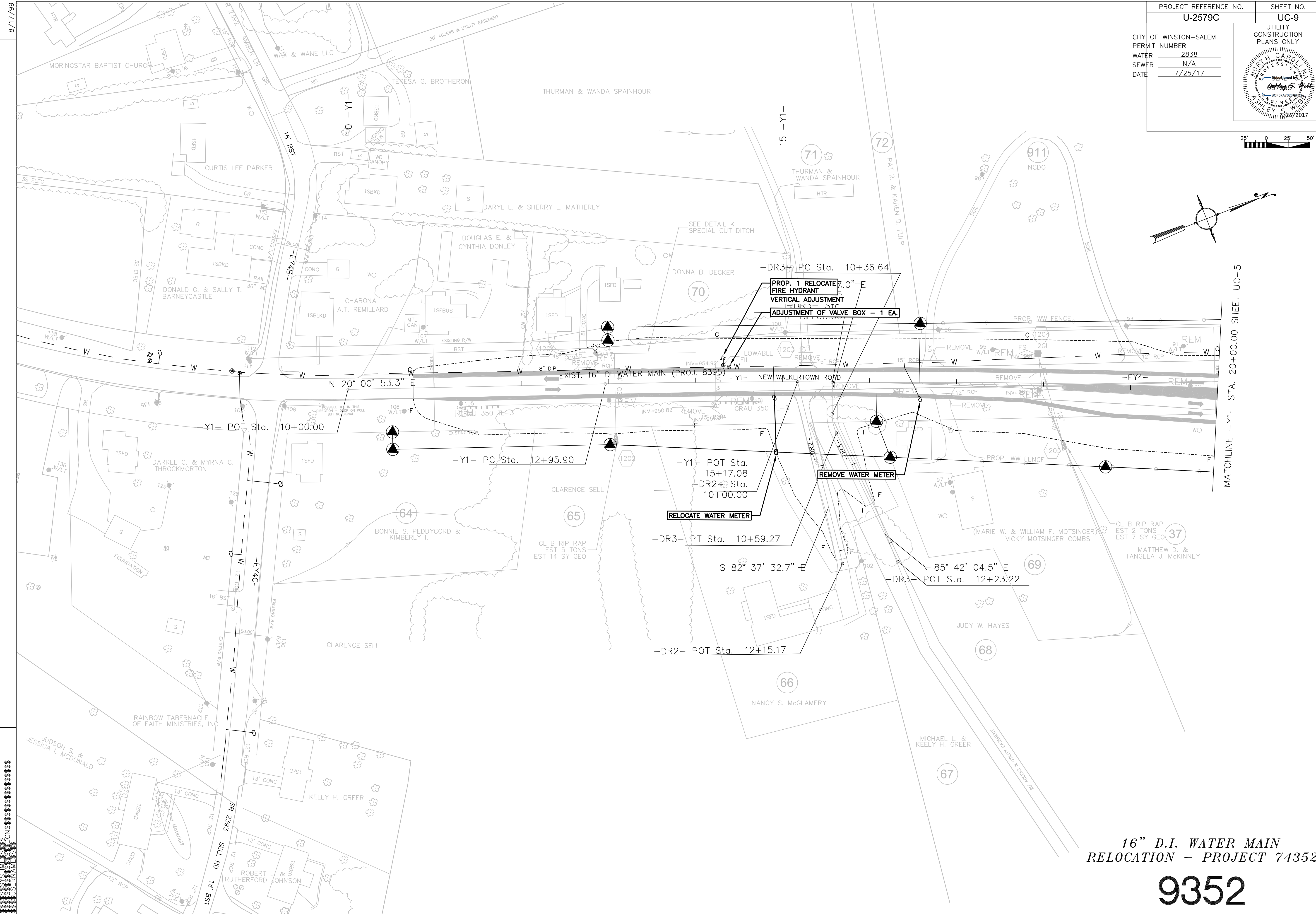
PROJECT REFERENCE NO.	SHEET NO.
U-2579C	UC-9
CITY OF WINSTON-SALEM PERMIT NUMBER	UTILITY CONSTRUCTION PLANS ONLY
WATER 2838	
SEWER N/A	
DATE 7/25/17	



8/17/99

REVISIONS

MATCHLINE -Y1- STA. 20+00.00 SHEET UC-5



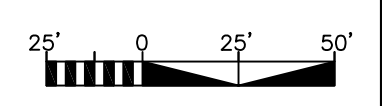
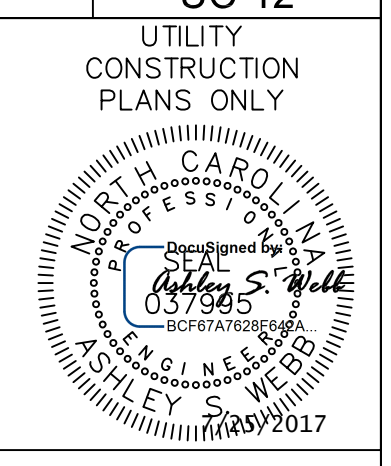
16" D.I. WATER MAIN  
RELOCATION - PROJECT 74352

9352



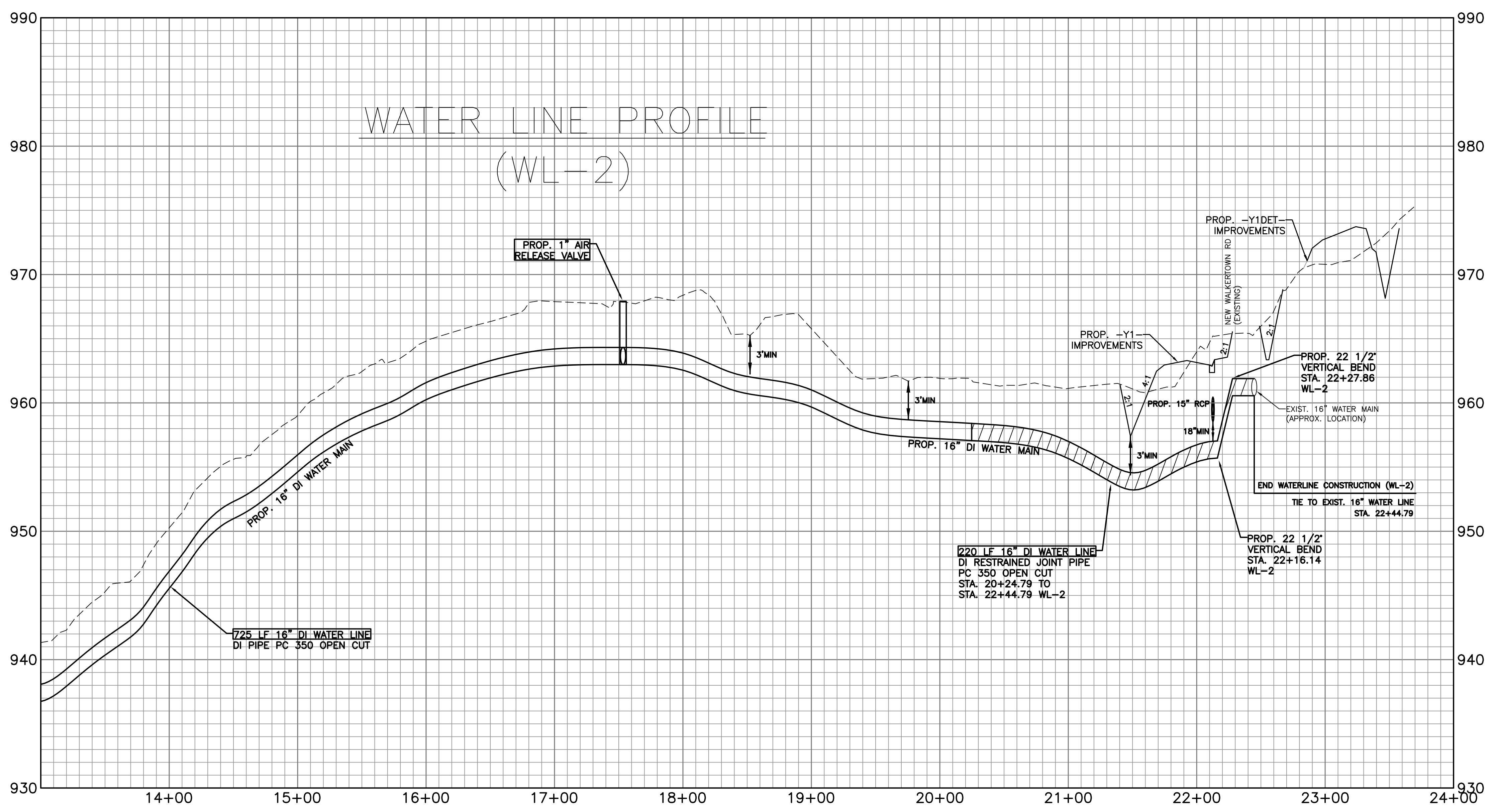


CITY OF WINSTON-SALEM  
 PERMIT NUMBER 2838  
 WATER N/A  
 SEWER N/A  
 DATE 7/25/17



8/17/99

REVISIONS



NOTE:  
FOR WL-2 PLAN,  
SEE SHEET UC-5&6

16" D.I. WATER MAIN  
RELOCATION - PROJECT 74352

9352