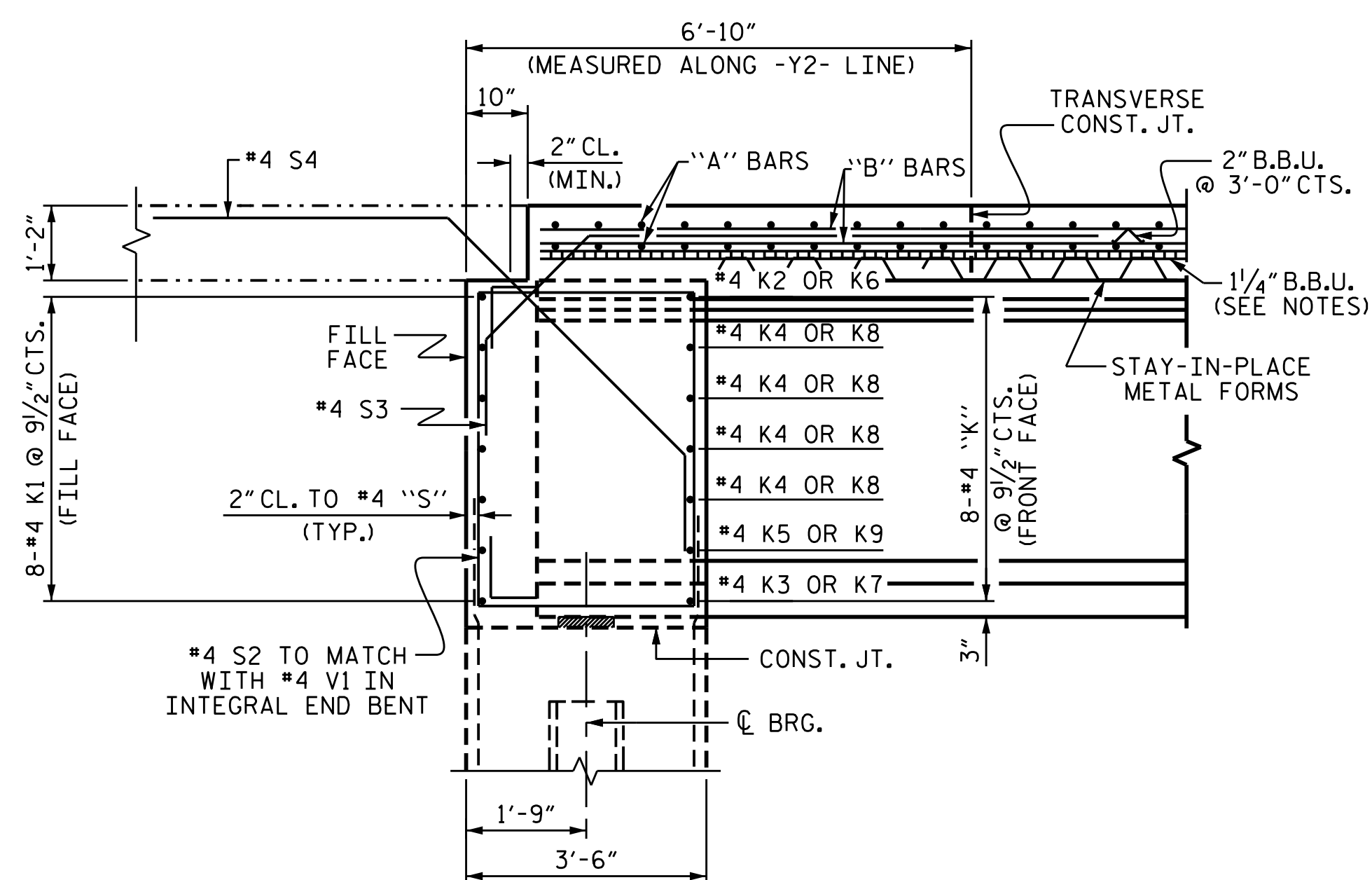
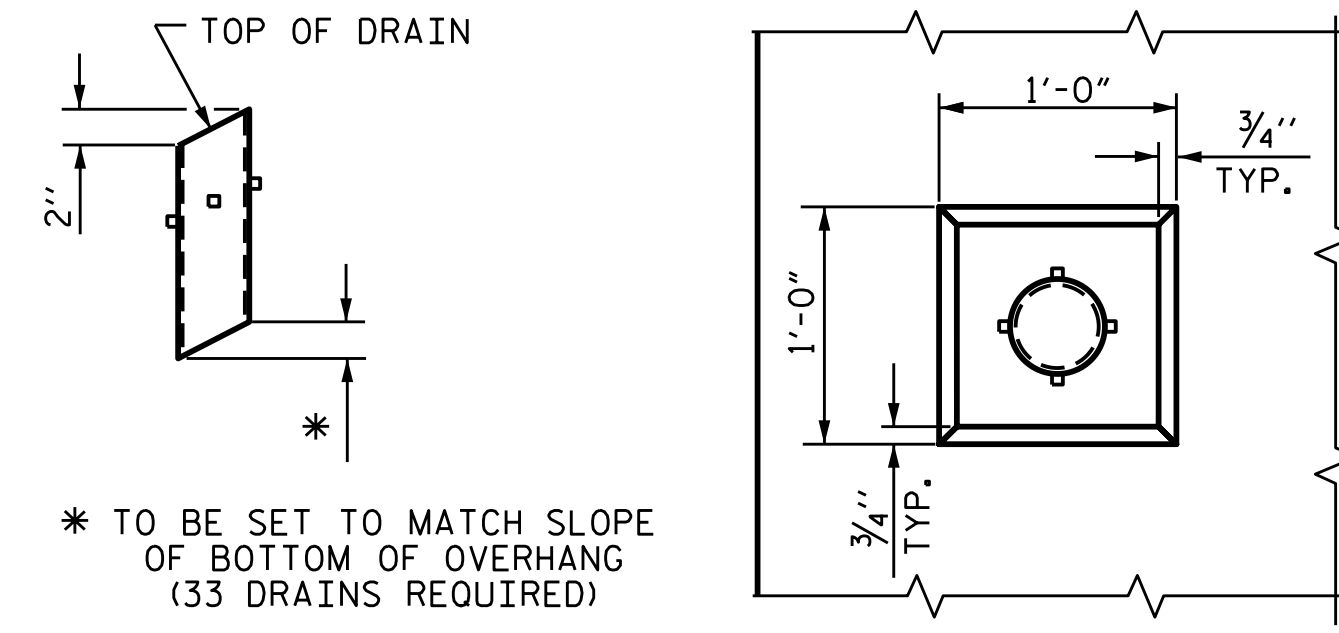


TYPICAL SECTION AT INTEGRAL END BENT



SECTION THROUGH INTEGRAL END BENT



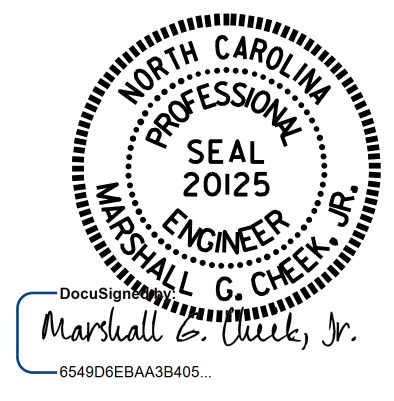
PIPE DETAIL

PLAN OF RECESS

TOP OF FLOOR DRAINS TO BE SET 3/8" BELOW SURFACE OF SLAB.  
 4 - 1/2" SQUARE LUGS TO BE GLUED TO THE P.V.C. PIPE AT EQUAL SPACES AROUND THE PIPE DRAIN APPROXIMATELY 4" FROM THE TOP OF THE PIPE.  
 THE 6" Ø PVC PIPE AND FITTINGS SHALL BE SCHEDULE 40 AND CONFORM TO ASTM D1785.

DRAIN DETAILS

THE ORIENTATION OF THE DRAINS ON THE RIGHT SIDE OF THE BRIDGE, IN FRONT OF THE PROPOSED SIDEWALK, SHALL BE PLACED SO THE WATER FLOW IS AWAY FROM THE EXTERIOR GIRDER.



PROJECT NO. U-2579C  
 FORSYTH COUNTY  
 STATION: 21+27.27 -Y2-

SHEET 2 OF 2

STATE OF NORTH CAROLINA  
 DEPARTMENT OF TRANSPORTATION  
 RALEIGH  
 SUPERSTRUCTURE  
 TYPICAL SECTION

DRAWN BY : N.D. AIUTO DATE : 1/13/16  
 CHECKED BY : J.K. BOWLES DATE : 3/31/16  
 DESIGN ENGINEER OF RECORD : J.K. BOWLES DATE : 3/31/16

DOCUMENT NOT CONSIDERED FINAL UNLESS ALL SIGNATURES COMPLETED

REVISIONS						SHEET NO.
NO.	BY:	DATE:	NO.	BY:	DATE:	TOTAL SHEETS
1			3			S2-6
2			4			30