

**NOTES**

PROVIDE 1/4" HIGH BEAM BOLSTERS UPPER AT 4'-0" CTS. ATOP THE METAL STAY-IN-PLACE FORMS TO SUPPORT THE BOTTOM MAT OF "A" BARS. WHEN USING REMOVABLE FORMS, PROVIDE CONTINUOUS HIGH CHAIRS FOR METAL DECK (C.H.C.M.) @ 4'-0" CTS. WITH A HEIGHT TO SUPPORT THE BOTTOM MAT OF "A" BARS A CLEAR DISTANCE OF 2 1/2" ABOVE THE TOP OF THE REMOVABLE FORM.

LONGITUDINAL STEEL MAY BE SHIFTED SLIGHTLY, AS NECESSARY, TO AVOID INTERFERENCE WITH STIRRUPS IN PRESTRESSED CONCRETE GIRDERS.

PREVIOUSLY CAST CONCRETE IN A CONTINUOUS UNIT SHALL HAVE ATTAINED A MINIMUM COMPRESSIVE STRENGTH OF 3,000 PSI BEFORE ADDITIONAL CONCRETE IS CAST IN THE UNIT.

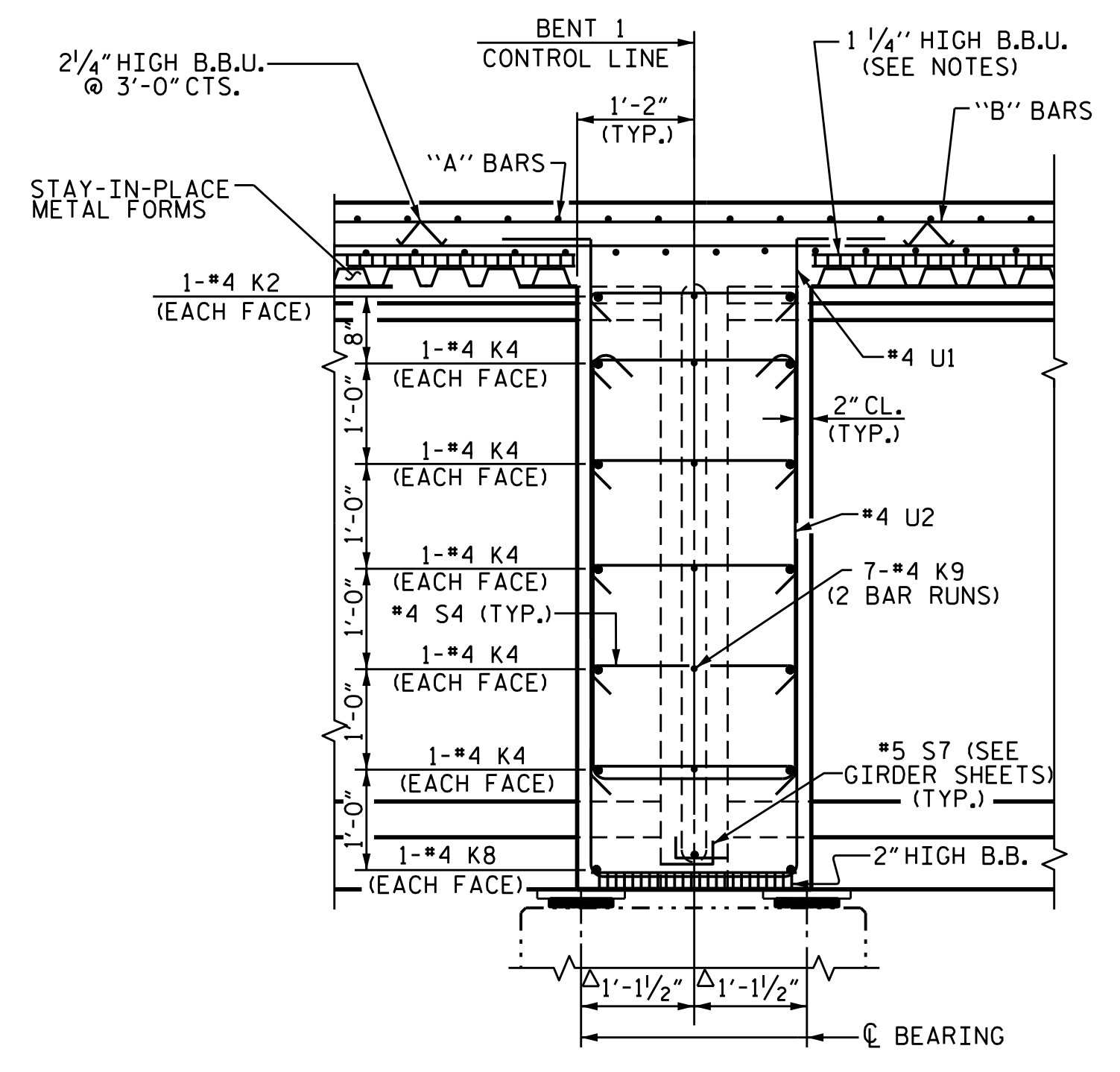
▲ FOR INTERMEDIATE STEEL DIAPHRAGM DETAILS, SEE "INTERMEDIATE STEEL DIAPHRAGMS FOR 72" MODIFIED BULB TEE PRESTRESSED CONCRETE GIRDERS" SHEET.

**AT BENT DIAPHRAGMS**

**AT INTERMEDIATE DIAPHRAGMS**

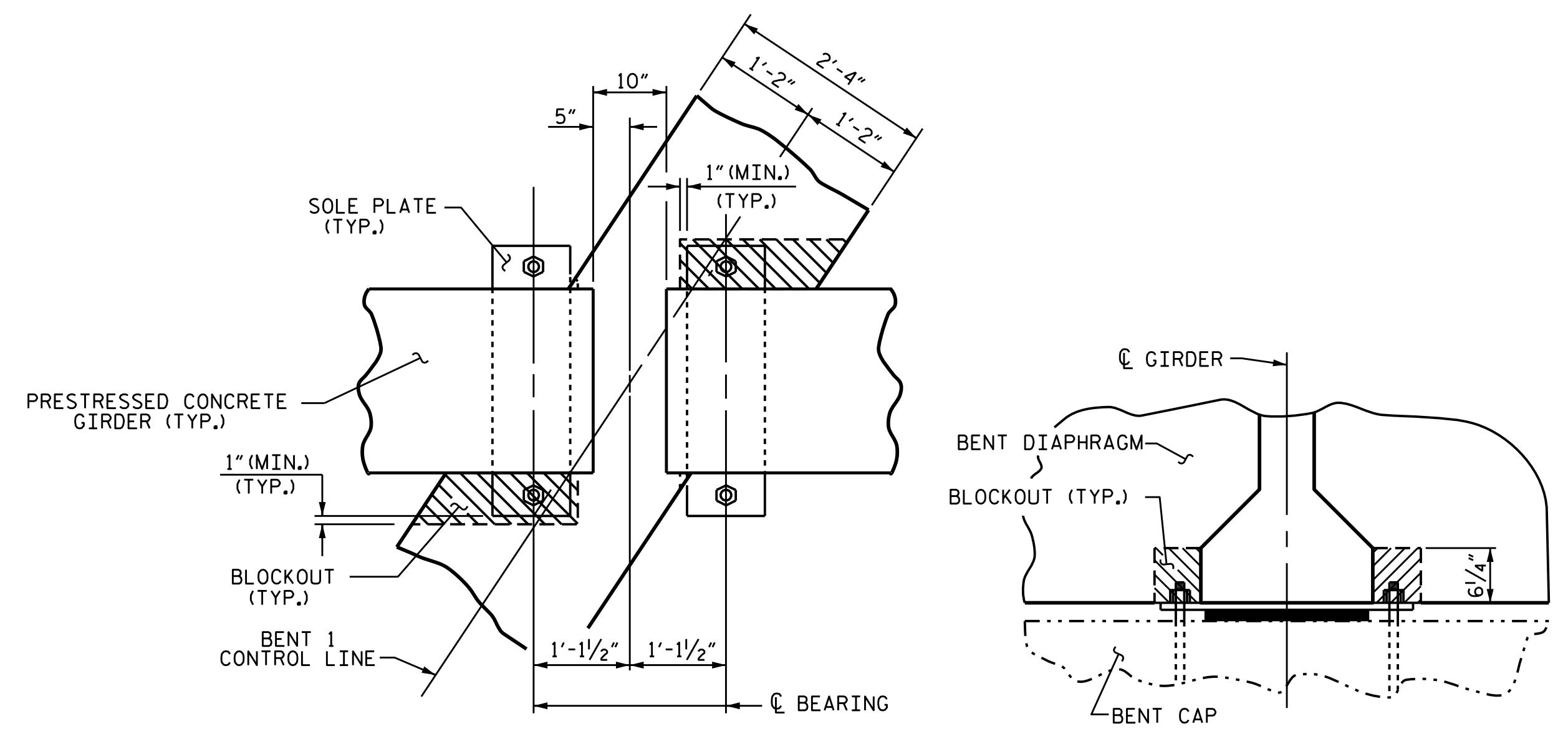
\* RADIAL DIMENSIONS  
\*\* RADIAL DIMENSIONS THRU WORK POINT

**TYPICAL SECTION**



**SECTION THRU BENT DIAPHRAGM**

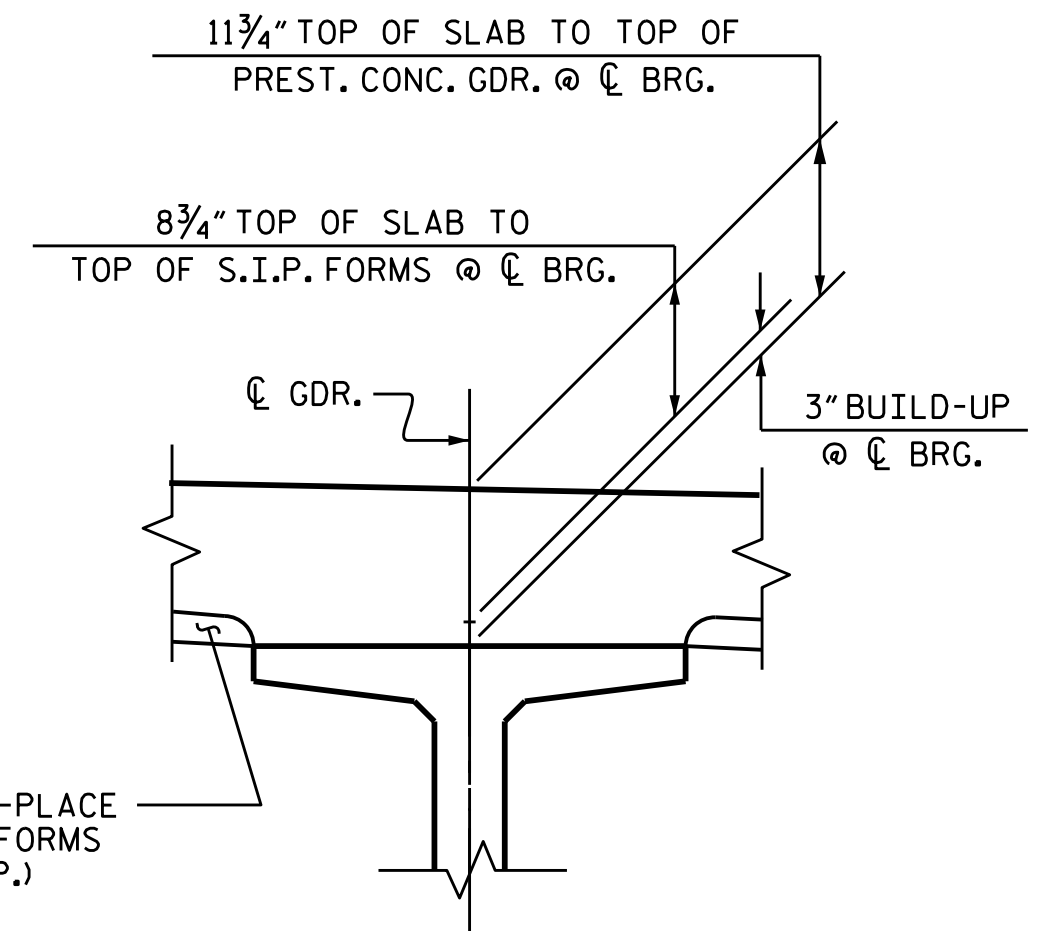
Δ MEASURED ALONG GDR.



**PLAN**

**SECTION**

**BENT DIAPHRAGM BLOCKOUT DETAIL**



**DETAIL "A"**

PROJECT NO. U-2579C  
 FORSYTH COUNTY  
 STATION: 29+24.97 -Y1-

SHEET 1 OF 2



7/27/2017

STATE OF NORTH CAROLINA  
 DEPARTMENT OF TRANSPORTATION  
 RALEIGH  
 SUPERSTRUCTURE  
 TYPICAL SECTION

DRAWN BY : J.P. MCCARTHA DATE : 4/15/16  
 CHECKED BY : H.A. LOCKLEAR DATE : 8/26/16  
 DESIGN ENGINEER OF RECORD: H.A. LOCKLEAR DATE : 6/2017

DOCUMENT NOT CONSIDERED FINAL UNLESS ALL SIGNATURES COMPLETED

REVISIONS						SHEET NO.	
NO.	BY:	DATE:	NO.	BY:	DATE:	S1-6	
1			3			TOTAL SHEETS	
2			4			32	