

PAVED SHOULDER

NOTE:
FOR -L- PROFILE, SEE SHEET 18
FOR -YIRPD- PROFILE, SEE SHEET 27
FOR -SRSA- PROFILE, SEE SHEET 33
FOR DRAINAGE DETAILS, SEE SHEETS 2D-1 TO 2D-4
FOR CULVERT PLANS, SEE SHEETS C2-1 TO C2-2

CLEARING AND GRUBBING
EROSION CONTROL FOR
CONSTRUCTION SHEET 08

Place Matting for Erosion Control
on Slope as Work Allows.
Sta. 432+00 to Sta. 440+50 -L- RT
Sta. 435+50 to Sta. 440+50 -L- LT
Sta. 20+00 to 21+66 -SRSA- LT

Place Matting for Erosion Control
on Slopes Adjacent to Permitted
Wetlands as Work Allows.

130 x 26 x 3
2.0 inch Skimmer
with 1.875 inch
Orifice Diameter
25 ft. weir
(See Tiered Skimmer
Basin Detail)
ID 8.10

Modified Silt Basin
Type 'B'
130 x 26 x 3
18 ft. weir
(See Tiered Skimmer
Basin Detail)
ID 8.10

84 x 21 x 3
1.5 inch Skimmer
with 1.25 inch
Orifice Diameter
7 ft. weir
ID 8.6

84 x 21 x 3
1.5 inch Skimmer
with 1.25 inch
Orifice Diameter
6 ft. weir
ID 8.7

68 x 17 x 3
1.5 inch Skimmer
with 0.875 inch
Orifice Diameter
4 ft. weir
ID 8.8

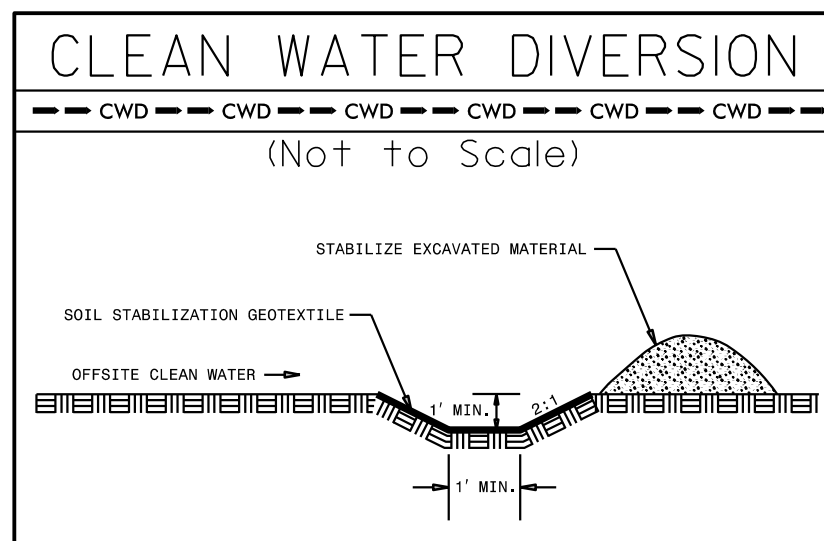
2@60 x 12 x 3
ID 8.11

2@36 x 12 x 3
ID 8.12

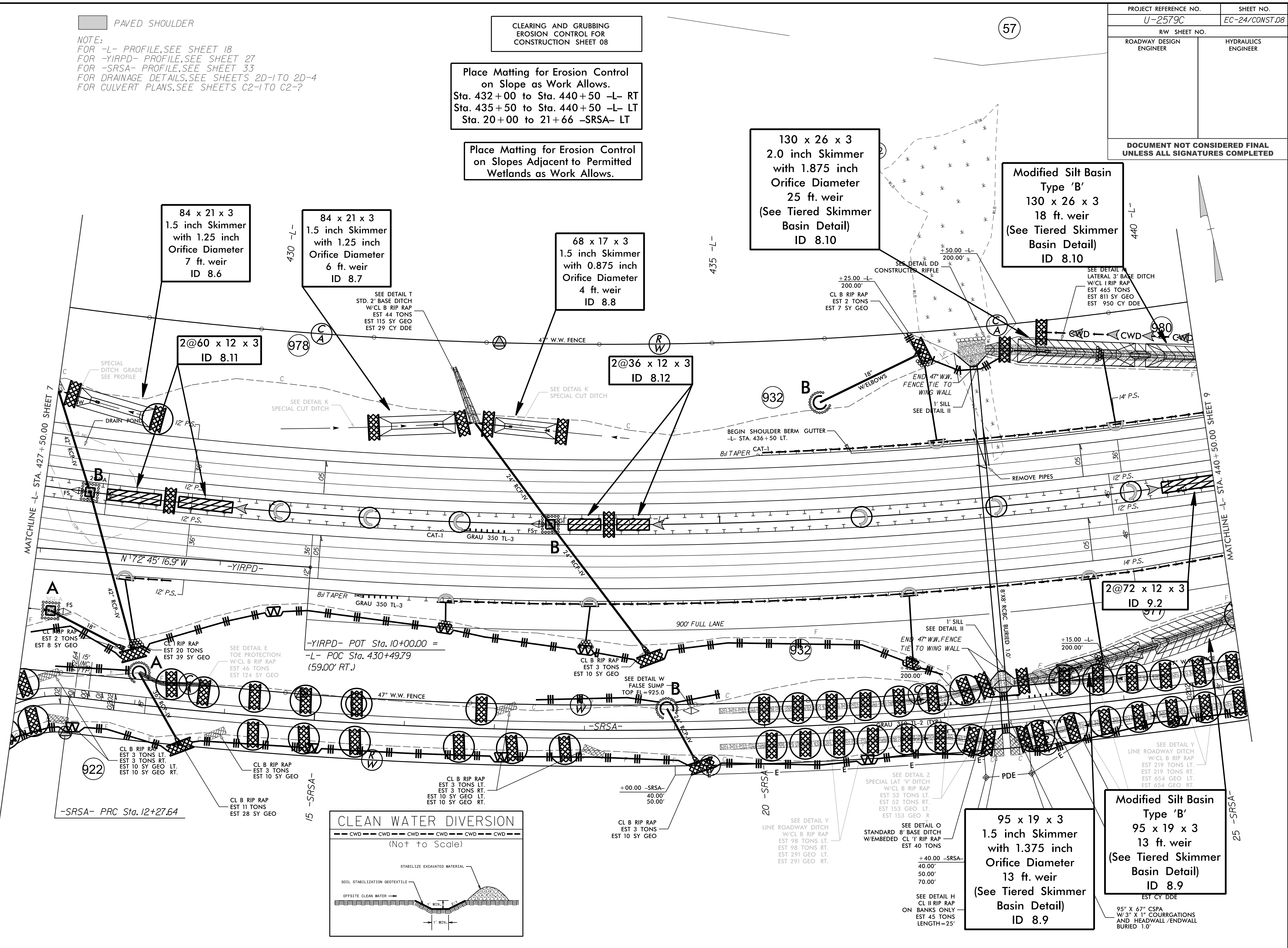
2@72 x 12 x 3
ID 9.2

95 x 19 x 3
1.5 inch Skimmer
with 1.375 inch
Orifice Diameter
13 ft. weir
(See Tiered Skimmer
Basin Detail)
ID 8.9

Modified Silt Basin
Type 'B'
95 x 19 x 3
13 ft. weir
(See Tiered Skimmer
Basin Detail)
ID 8.9



95" x 67" CSPA
W/ 3" x 1" COURRGATIONS
AND HEADWALL/ENDWALL
BURIED 1.0'



PROJECT REFERENCE NO. U-2579C	SHEET NO. EC-24/CONST.08
RW SHEET NO.	HYDRAULICS ENGINEER
ROADWAY DESIGN ENGINEER	

DOCUMENT NOT CONSIDERED FINAL
UNLESS ALL SIGNATURES COMPLETED