

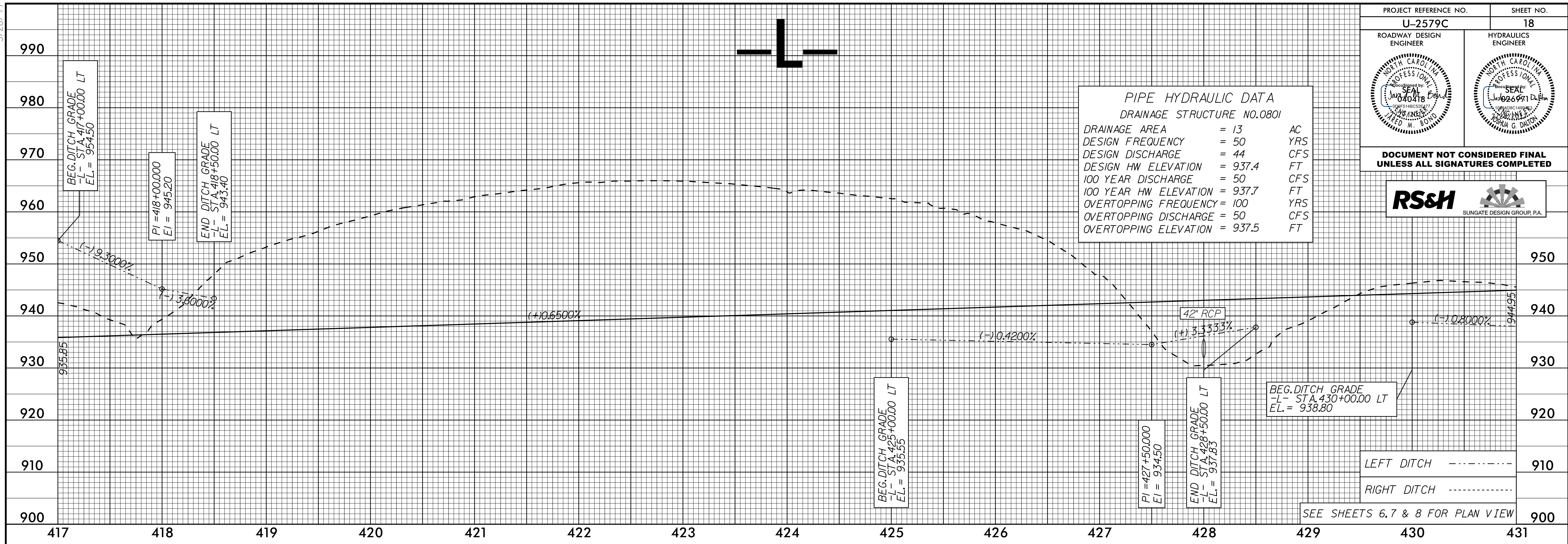
PROJECT REFERENCE NO. U-2579C	SHEET NO. 18
ROADWAY DESIGN ENGINEER	HYDRAULICS ENGINEER

DOCUMENT NOT CONSIDERED FINAL UNLESS ALL SIGNATURES COMPLETED



PIPE HYDRAULIC DATA
DRAINAGE STRUCTURE NO.0801

DRAINAGE AREA	= 13	AC
DESIGN FREQUENCY	= 50	YRS
DESIGN DISCHARGE	= 44	CFS
DESIGN HW ELEVATION	= 937.4	FT
100 YEAR DISCHARGE	= 50	CFS
100 YEAR HW ELEVATION	= 937.7	FT
OVERTOPPING FREQUENCY	= 100	YRS
OVERTOPPING DISCHARGE	= 50	CFS
OVERTOPPING ELEVATION	= 937.5	FT



PIPE HYDRAULIC DATA
DRAINAGE STRUCTURE NO.0807

DRAINAGE AREA	= 3.4	AC
DESIGN FREQUENCY	= 50	YRS
DESIGN DISCHARGE	= 10	CFS
DESIGN HW ELEVATION	= 938.6	FT
100 YEAR DISCHARGE	= 11	CFS
100 YEAR HW ELEVATION	= 938.7	FT
OVERTOPPING FREQUENCY	= 500	YRS
OVERTOPPING DISCHARGE	= 28	CFS
OVERTOPPING ELEVATION	= 940.0	FT

PI = 437+43.00
EL = 949.13'
K = 329
VC = 900'

CULVERT HYDRAULIC DATA

DESIGN DISCHARGE	= 385	CFS
DESIGN FREQUENCY	= 50	YRS
DESIGN HW ELEVATION	= 902.30	FT
BASE DISCHARGE	= 445	CFS
BASE FREQUENCY	= 100	YRS
BASE HW ELEVATION	= 902.90	FT
OVERTOPPING DISCHARGE	= 755	CFS
OVERTOPPING FREQUENCY	= 500+	YRS
OVERTOPPING ELEVATION	= 910.0	FT

