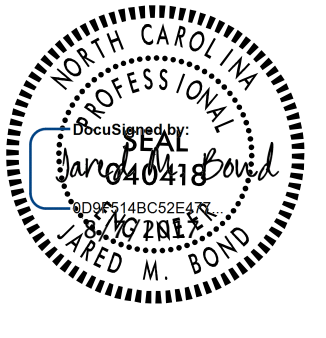
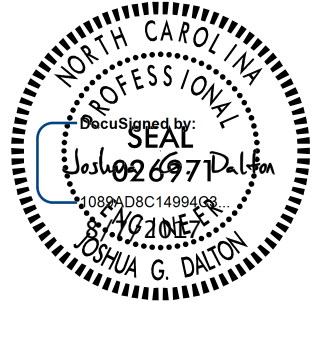
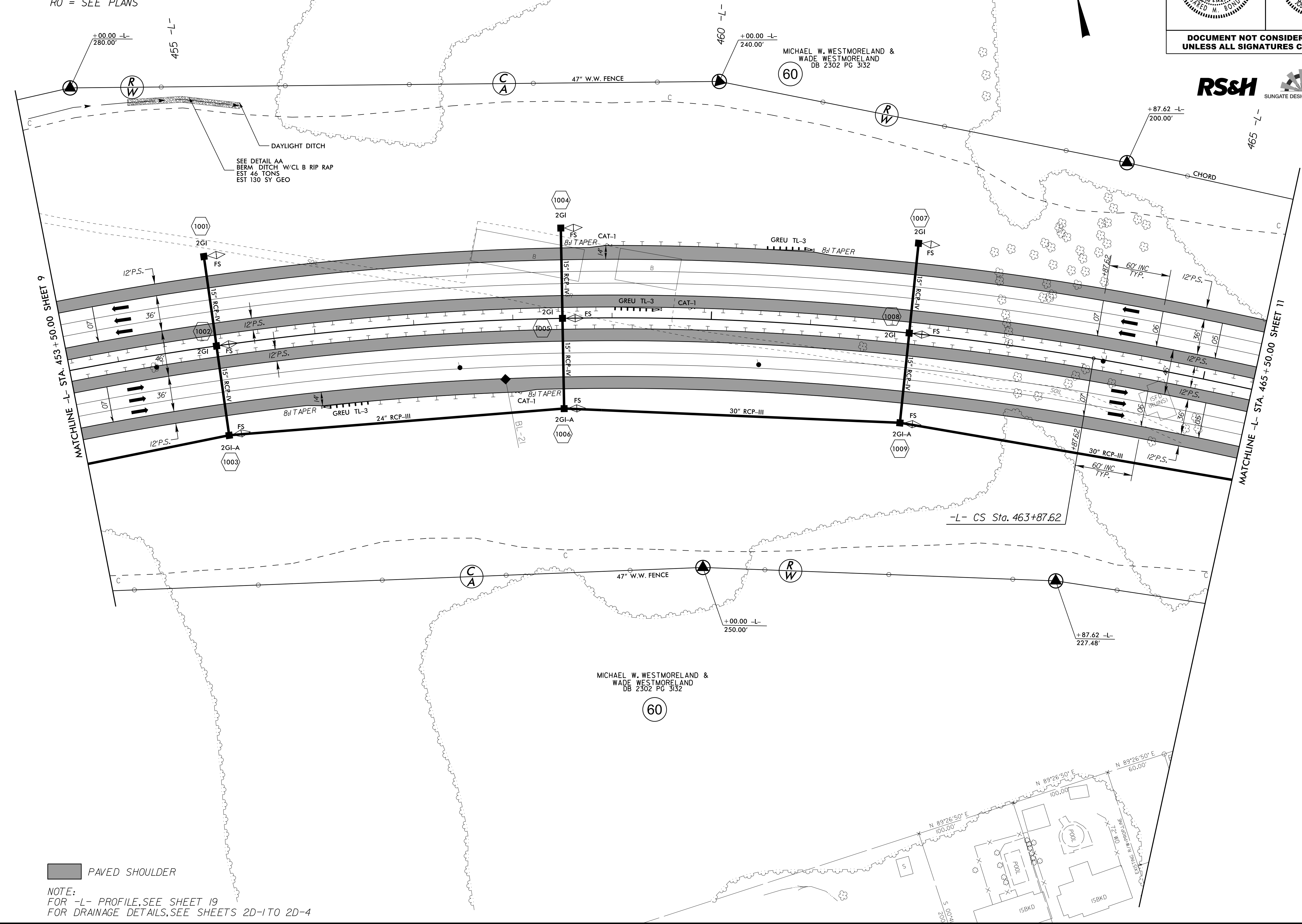


8/17/99

| | | | |
|---|--|---|--|
| PROJECT REFERENCE NO. | | SHEET NO. | |
| U-2579C | | 10 | |
| RW SHEET NO. | | HYDRAULICS ENGINEER | |
| ROADWAY DESIGN ENGINEER | | SEAL | |
|  | |  | |
| DOCUMENT NOT CONSIDERED FINAL UNLESS ALL SIGNATURES COMPLETED | | | |

-L-

| | | |
|---------------------------|------------------------------|---------------------------|
| Pls Sta 451+66.55 | PI Sta 458+53.53 | Pls Sta 465+27.69 |
| $\Delta s = 4' 11" 32.5"$ | $\Delta = 2' 35" 01.1" (RT)$ | $\Delta s = 4' 11" 32.5"$ |
| Ls = 420.00' | D = 1' 59' 46.9" | Ls = 420.00' |
| LT = 280.08' | L = 1,081.14' | LT = 280.08' |
| ST = 140.07' | T = 547.06' | ST = 140.07' |
| | R = 2,870.00' | |
| | SE = 07 | |
| | RO = SEE PLANS | |



REVISIONS

MATCHLINE -L- STA. 453+50.00 SHEET 9

MATCHLINE -L- STA. 465+50.00 SHEET 11

PAVED SHOULDER

NOTE:
FOR -L- PROFILE, SEE SHEET 19
FOR DRAINAGE DETAILS, SEE SHEETS 2D-1 TO 2D-4

07-AUG-2017 14:32
 R:\Roadway\Projects\U-2579C_psh_10.dgn
 R:\SUNGATE\PROJECTS\U-2579C\U-2579C.dwg