

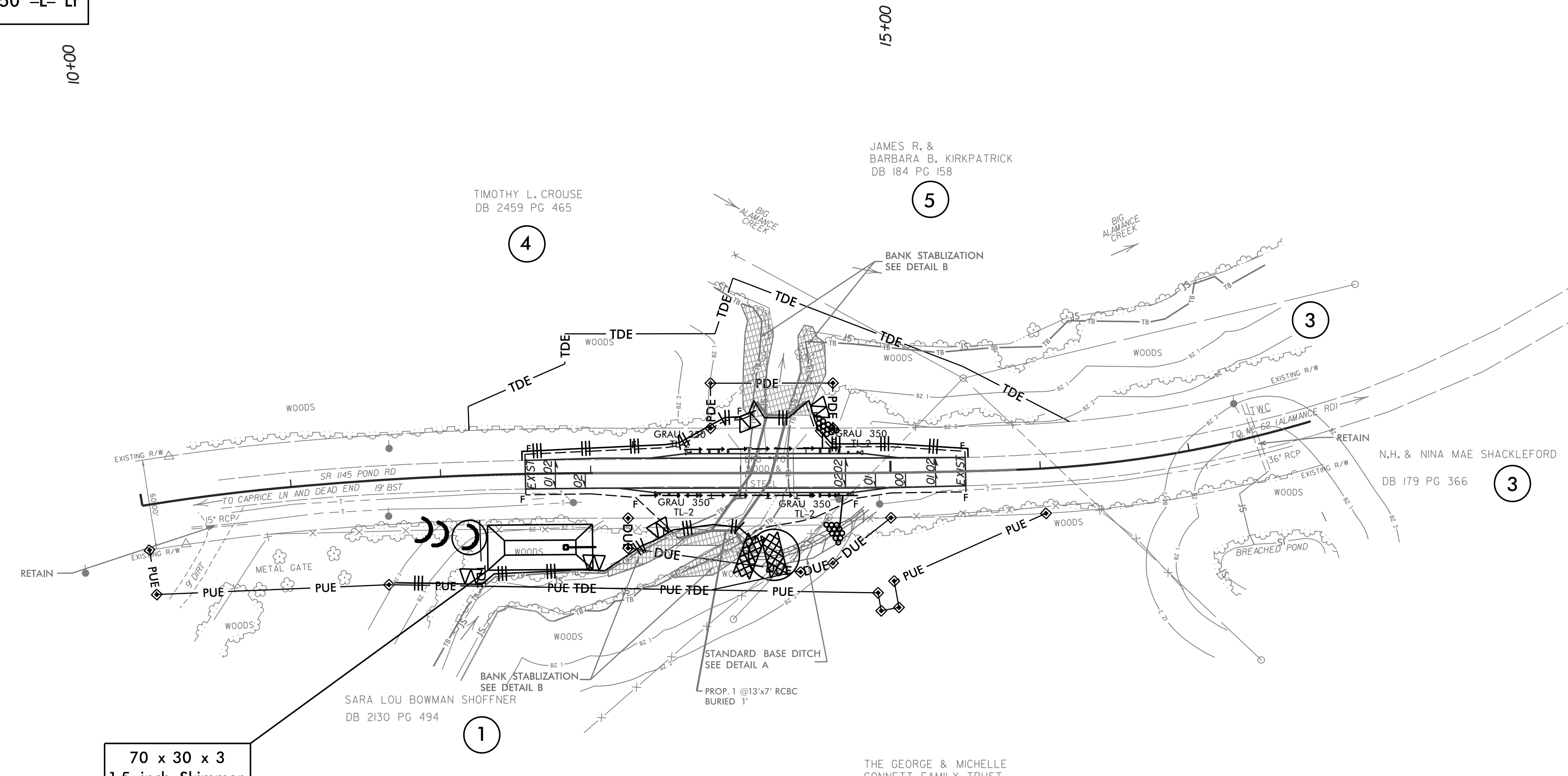
PROJECT REFERENCE NO.	SHEET NO.
B-5347	EC-7/CONST.4
RW SHEET NO.	
ROADWAY DESIGN ENGINEER	HYDRAULICS ENGINEER

-L-

PI Sta 10+48.51 Δ = 3° 56' 05.7" (RT) D = 4° 03' 25.6" L = 96.99' T = 48.51' R = 1,412.23'	PI Sta 11+99.34 Δ = 5° 14' 55.5" (RT) D = 2° 33' 56.7" L = 204.57' T = 102.36' R = 2,233.10'	PI Sta 15+22.82 Δ = 2° 00' 55.7" (LT) D = 1° 38' 48.2" L = 122.39' T = 61.20' R = 3,479.38'	PI Sta 16+84.28 Δ = 14° 37' 34.7" (LT) D = 7° 20' 01.7" L = 199.44' T = 100.26' R = 781.26'
---	---	--	--

Place Matting for Erosion Control on Slope as Work Allows.
Sta. 13+25 to Sta. 14+50 -L- Rt
Sta. 13+75 to Sta. 14+50 -L- Lt

NAD 83/2011

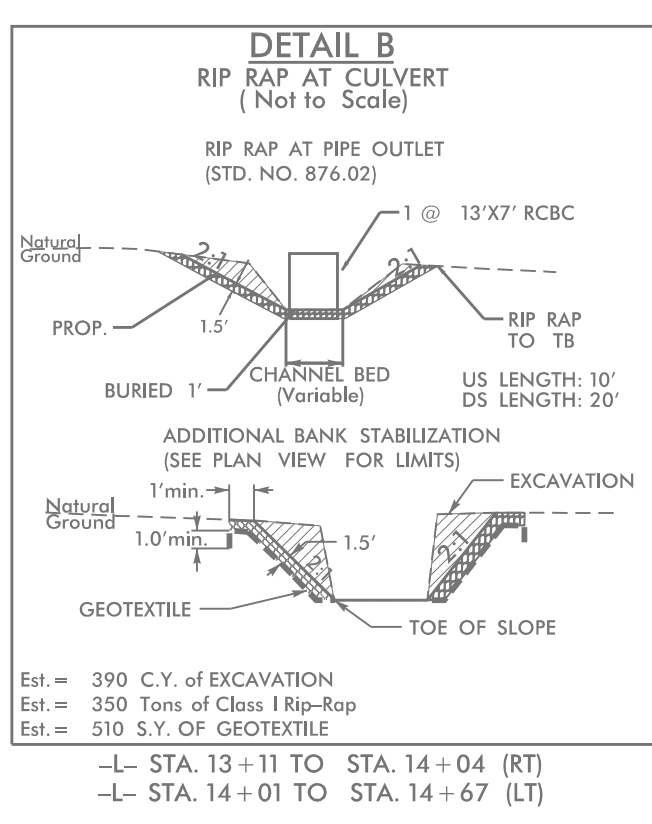
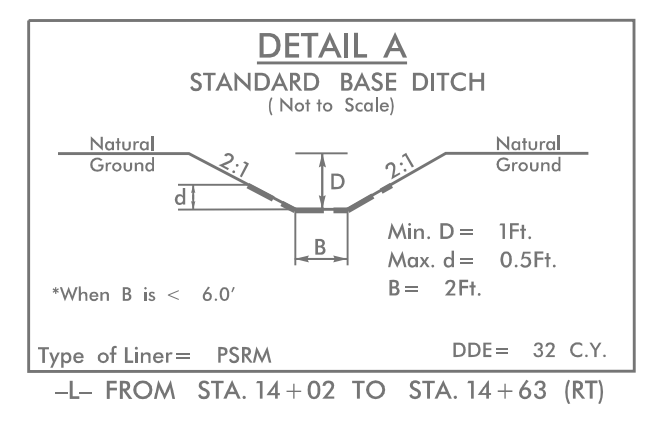


70 x 30 x 3
1.5 inch Skimmer
with 1.25 inch
Orifice Diameter
4 ft. weir
ID 4.1B

GRASS SWALE DATA

TOTAL DA = 0.940c	c = 0.22
Imp = 0.020c	(c=0.9)
Grass = 0.020c	(c=0.5)
Woods = 0.90c	(c=0.2)
SLOPE = 0.012	H/H
S ₁ = 2:1 (LT)	7:1 (RT)
L _{REQ} = 92'	
L _{PRO} = 150'	
Q ₂ = 0.92cfs	Q ₁₀ = 1.68cfs
V ₂ = 1.25ft/s	V ₁₀ = 1.45ft/s
D ₂ = 0.43RD10	= 0.54ft

-L- STA. 14+83 to 16+35 (RT)



8/17/99

8/16/2017 EC-pshdgr
8/23/17 PM