

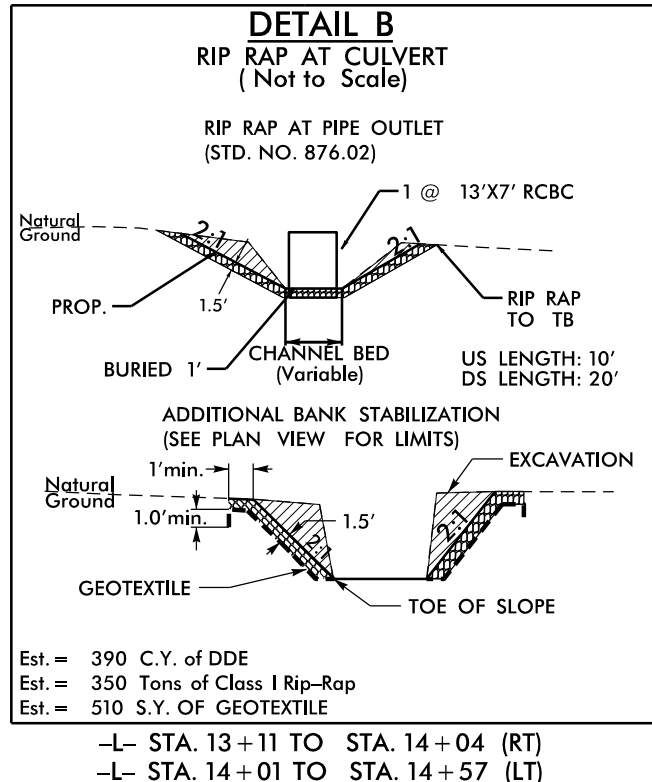
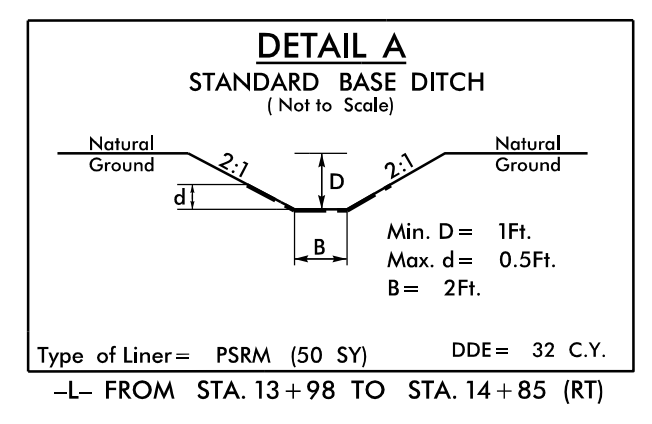
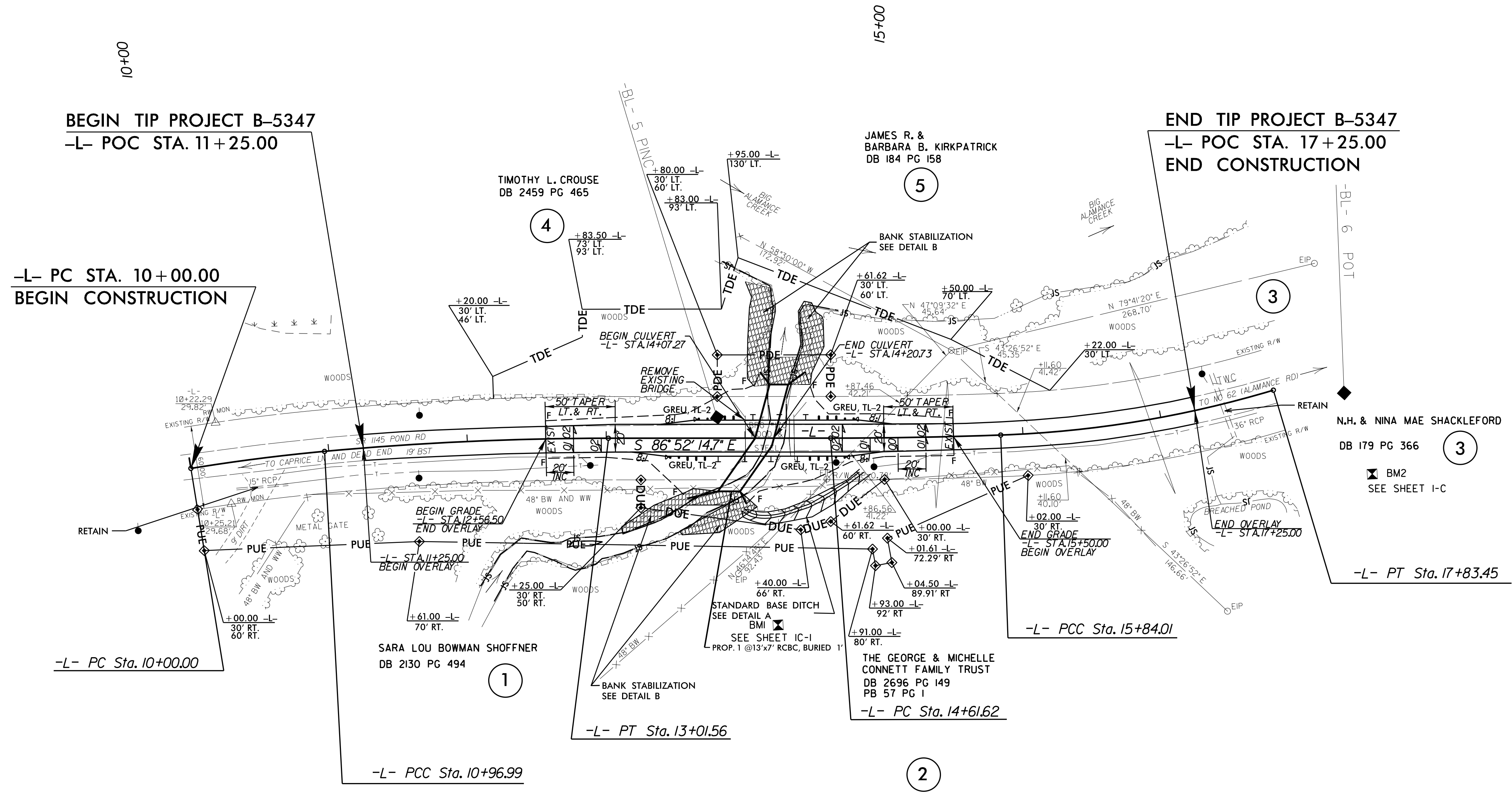


PROJECT REFERENCE NO. B-5347	SHEET NO. 4
RW SHEET NO.	
ROADWAY DESIGN ENGINEER SEAL 019824 9/25/2017	HYDRAULICS ENGINEER SEAL 002504 9/25/2017
DOCUMENT NOT CONSIDERED FINAL UNLESS ALL SIGNATURES COMPLETED	

-L-			
PI Sta 10+48.51 Δ = 3° 56' 05.7" (RT) D = 4° 03' 25.6" L = 96.99' T = 48.51' R = 1,412.23' SE = EXIST.	PI Sta 11+99.34 Δ = 5° 14' 55.5" (RT) D = 2° 33' 56.7" L = 204.57' T = 102.36' R = 2,233.10' SE = SEE PLANS	PI Sta 15+22.82 Δ = 2° 00' 55.7" (LT) D = 1° 38' 48.2" L = 122.39' T = 61.20' R = 3,479.38' SE = SEE PLANS	PI Sta 16+84.28 Δ = 14° 37' 34.7" (LT) D = 7° 20' 01.7" L = 199.44' T = 100.26' R = 781.26' SE = EXIST.



REVISIONS



SEE DETAIL SHEET 2B-1 FOR DETOUR
SEE SHEET 5 FOR PROFILE
SEE SHEETS C1 THRU C8 FOR
CULVERT PLANS