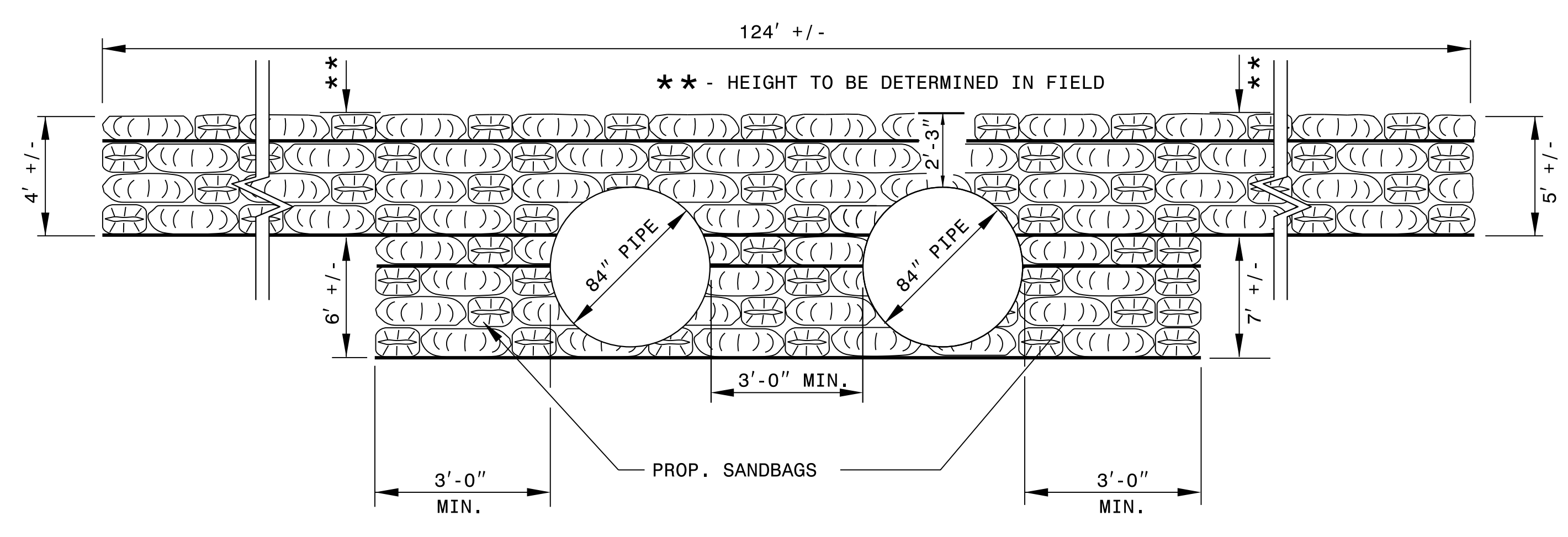


PLAN

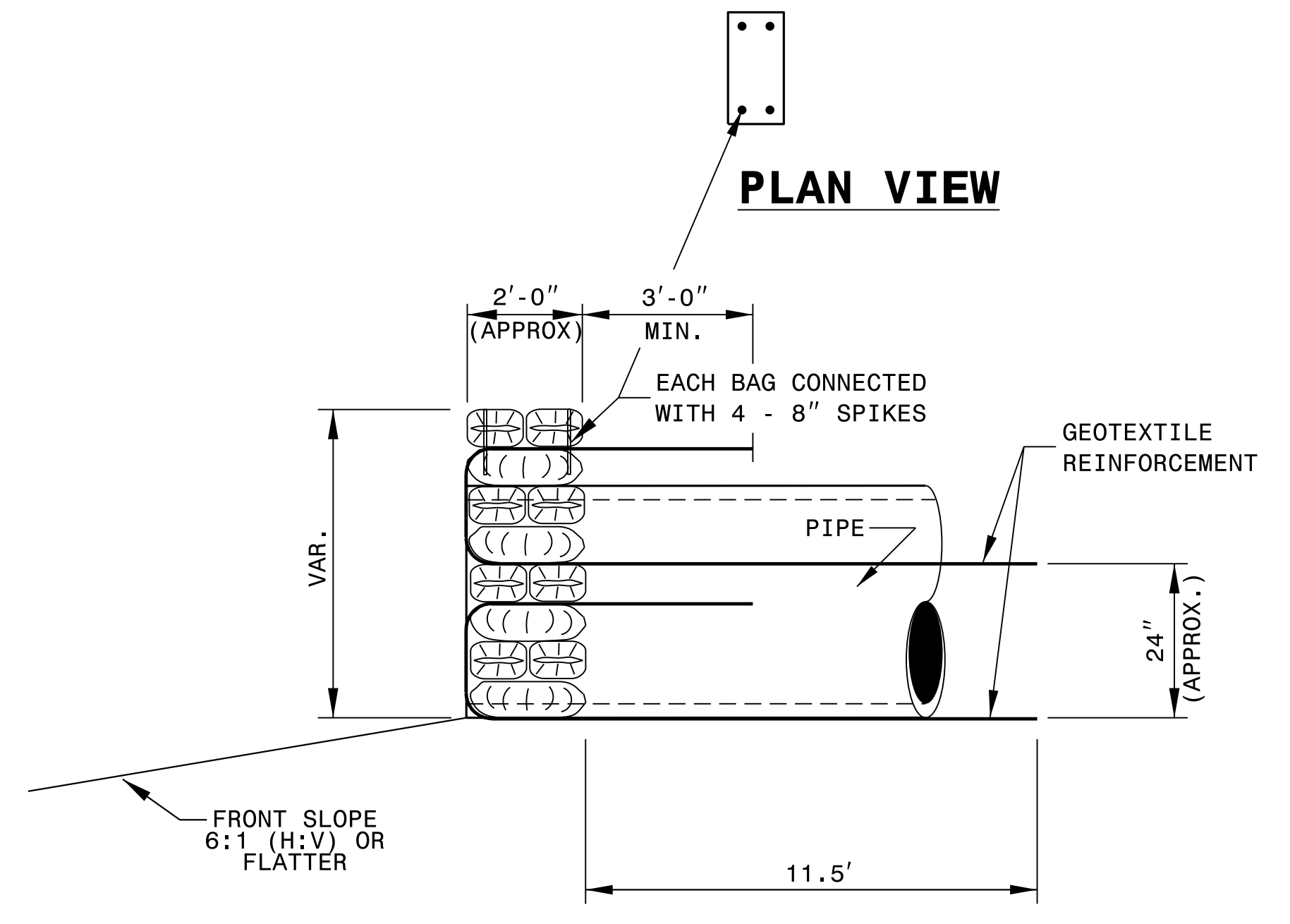


FRONT ELEVATION

GEOTEXTILE REINFORCEMENT (TYPE 5 GEOTEXTILE)		
WALL HEIGHT H (ft)	REINF. LENGTH L (ft)	WIDE WIDTH TENSILE STRENGTH @ ULTIMATE (MD) (lb/ft)
< 4	6	2400
4 TO 6	6	3400
6 TO 8	= H	4300
8 TO 10	= H	5200
10 TO 12	= H	6200

TOTAL APPROXIMATE AREA SANDBAG HEADWALL = 619 S.F.

- GENERAL NOTES:**
- FOR REINFORCED SANDBAG HEADWALLS, SEE SANDBAG HEADWALLS PROVISION.
 - REINFORCED SANDBAG HEADWALLS ARE BASED ON A TRAFFIC SURCHARGE OF 250 LB/SF OR LESS AND A BACK SLOPE OF 2:1(H:V) OR FLATTER.
 - REINFORCED SANDBAG HEADWALLS ARE BASED ON THE FOLLOWING IN-SITU ASSUMED SOIL PARAMETERS:
 UNIT WEIGHT, $\gamma = 120$ LB/CF
 FRICTION ANGLE, $\phi = 30$ DEGREES
 COHESION, $c = 0$ LB/SF
 - DO NOT USE REINFORCED SANDBAG HEADWALLS IF ASSUMED SOIL PARAMETERS ARE NOT APPLICABLE.
 - DO NOT USE REINFORCED SANDBAG HEADWALLS WHEN VERY LOOSE OR SOFT SOIL OR MUCK IS BELOW SANDBAGS OR PIPES.
 - DO NOT PLACE GEOTEXTILE REINFORCEMENT OR SANDBAGS UNTIL EXCAVATION DIMENSIONS AND FOUNDATION MATERIAL ARE APPROVED.
 - 24" LONG #4 REINFORCING STEEL BARS MAY BE SUBSTITUTED FOR 8" LONG STEEL SPIKES. DRIVE #4 BAR THROUGH NO MORE THAN 5 SANDBAGS.
 - DO NOT SPLICE OR OVERLAP GEOTEXTILE REINFORCEMENT SO SEAMS ARE PARALLEL TO THE HEADWALL FACE.
 - HEADWALL DIMENSIONS MAY BE ADJUSTED FOR ONE OR MORE PIPES AS SHOWN IN THE PLANS.



SIDE ELEVATION

**DOCUMENT NOT CONSIDERED FINAL
UNLESS ALL SIGNATURES COMPLETED**

CONTRACT STANDARDS & DEVELOPMENT UNIT
STANDARDS AND SPECIAL DESIGN
Office 919-707-6950 FAX 919-250-4119

**DETAIL OF REINFORCED
SANDBAG HEADWALL**

ORIGINAL BY: _____ DATE: _____
 MODIFIED BY: kkempf DATE: 10-27-16
 CHECKED BY: _____ DATE: _____
 FILE SPEC.: s:detaila/kkempf/english/85347 Double Pipe Reinforced Sandbag Headwall.dgn

