

24-MAY-2017 12:42 S:\Contracts\Special Details\Howerton\Standard Drawings\2012 Standard Drawings\Division 8\862d01 862d03 862d03\862d01.dgn

STATE OF NORTH CAROLINA DEPT. OF TRANSPORTATION DIVISION OF HIGHWAYS RALEIGH, N.C.

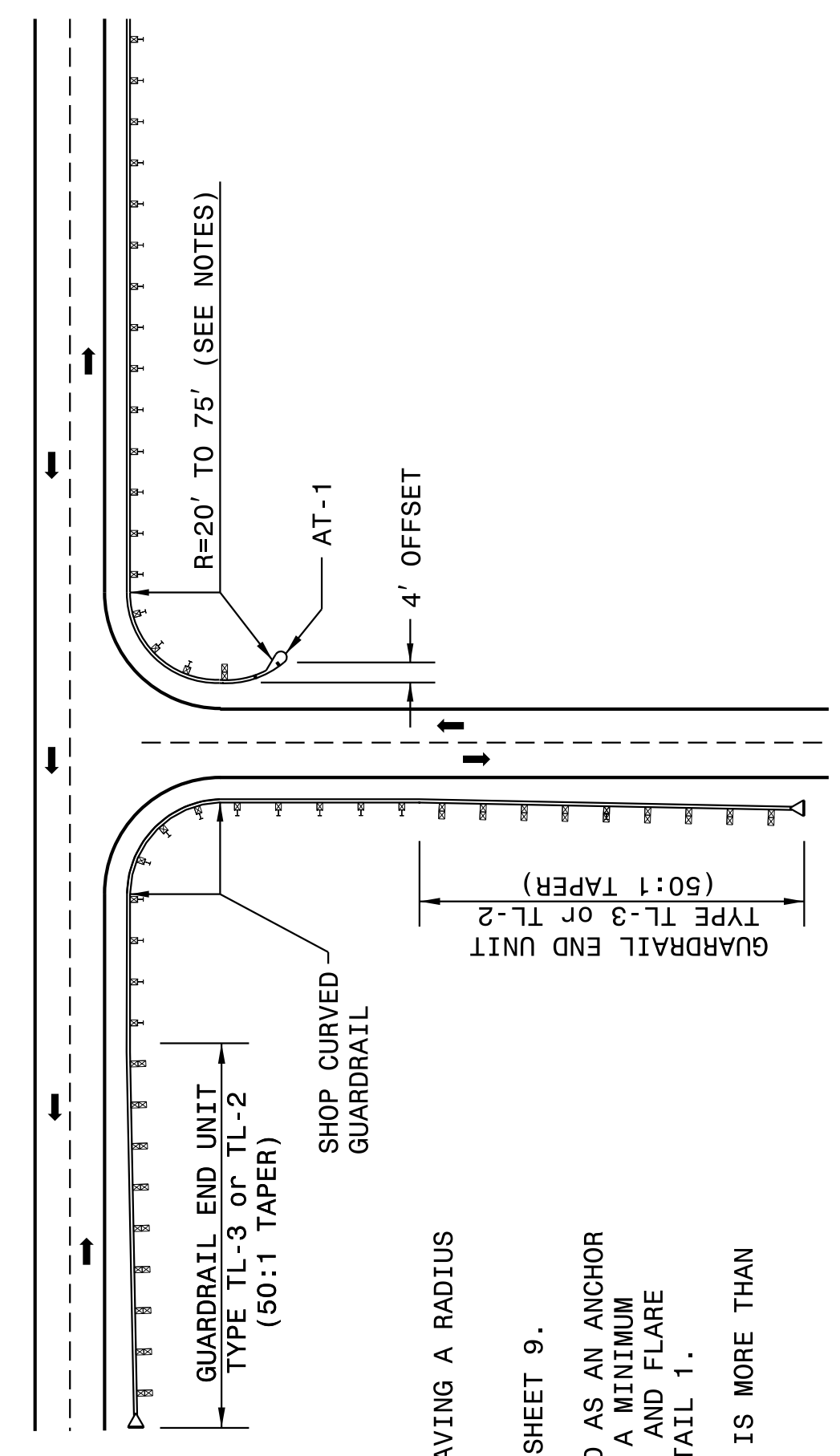
ROADWAY DETAIL DRAWING FOR GUARDRAIL PLACEMENT

SHEET 8 OF 11 862D01

STATE OF NORTH CAROLINA DEPT. OF TRANSPORTATION DIVISION OF HIGHWAYS RALEIGH, N.C.

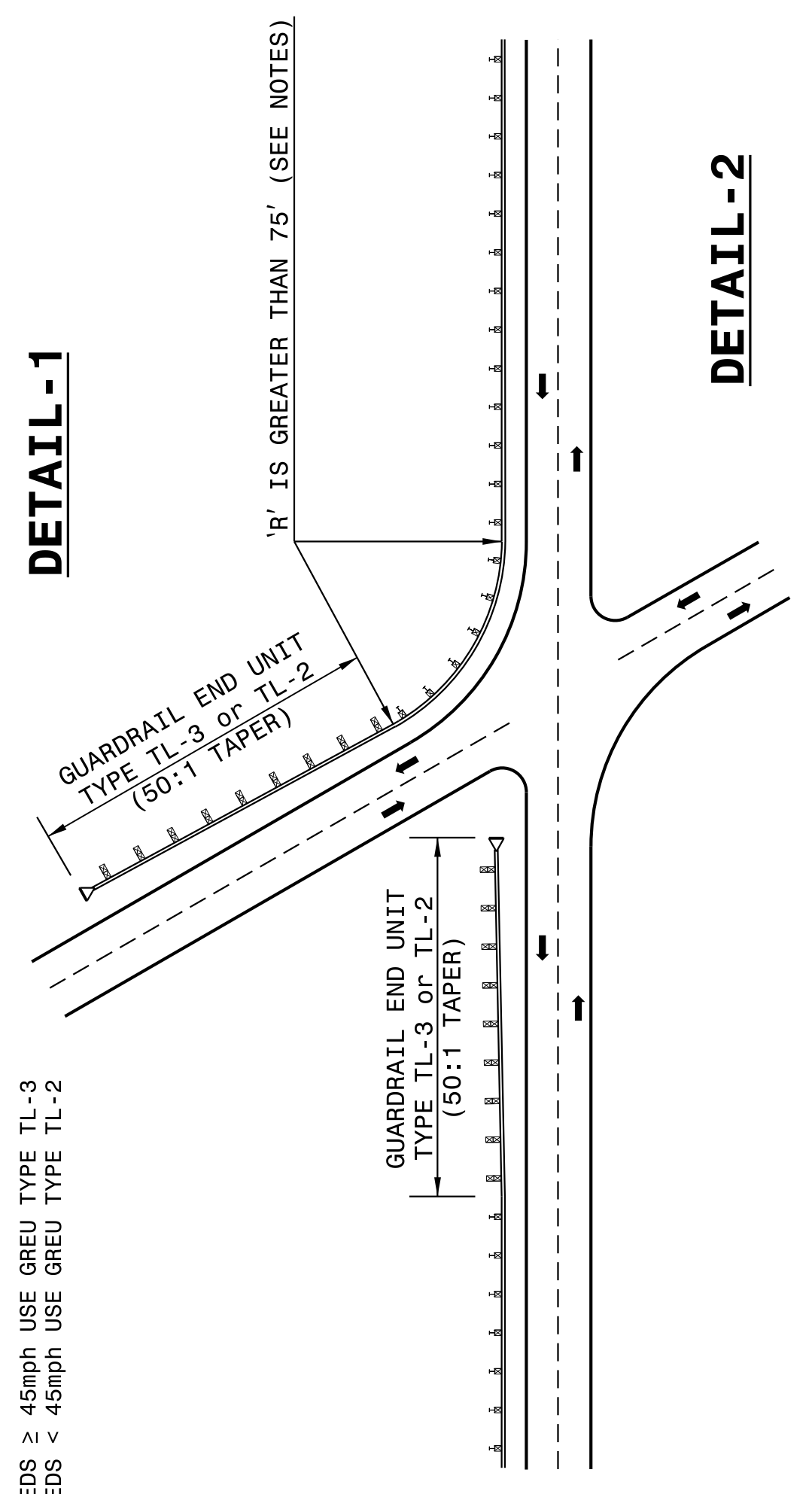
ROADWAY DETAIL DRAWING FOR GUARDRAIL PLACEMENT

SHEET 8 OF 11 862D01



NOTES:
SHOP CURVED GUARDRAIL IS DEFINED AS HAVING A RADIUS OF 150' OR LESS.
WHEN RADIUS IS LESS THAN 20' REFER TO SHEET 9.
WHENEVER SHOP CURVED GUARDRAIL IS USED AS AN ANCHOR AND THE RADIUS IS FROM 20' TO 75', USE A MINIMUM LENGTH OF 50' OF SHOP CURVED GUARDRAIL AND FLARE WITH AN AT-1 ANCHOR UNIT. REFER TO DETAIL 1.
WHENEVER SHOP CURVED GUARDRAIL RADIUS IS MORE THAN 75', REFER TO DETAIL 2.

MAINTAIN CLEAR SIGHT DISTANCE.
FOR POSTED SPEEDS ≥ 45mph USE GREU TYPE TL-3
FOR POSTED SPEEDS < 45mph USE GREU TYPE TL-2



DETAIL -1

GUARDRAIL TREATMENT AT INTERSECTIONS

STATE OF NORTH CAROLINA DEPT. OF TRANSPORTATION DIVISION OF HIGHWAYS RALEIGH, N.C.

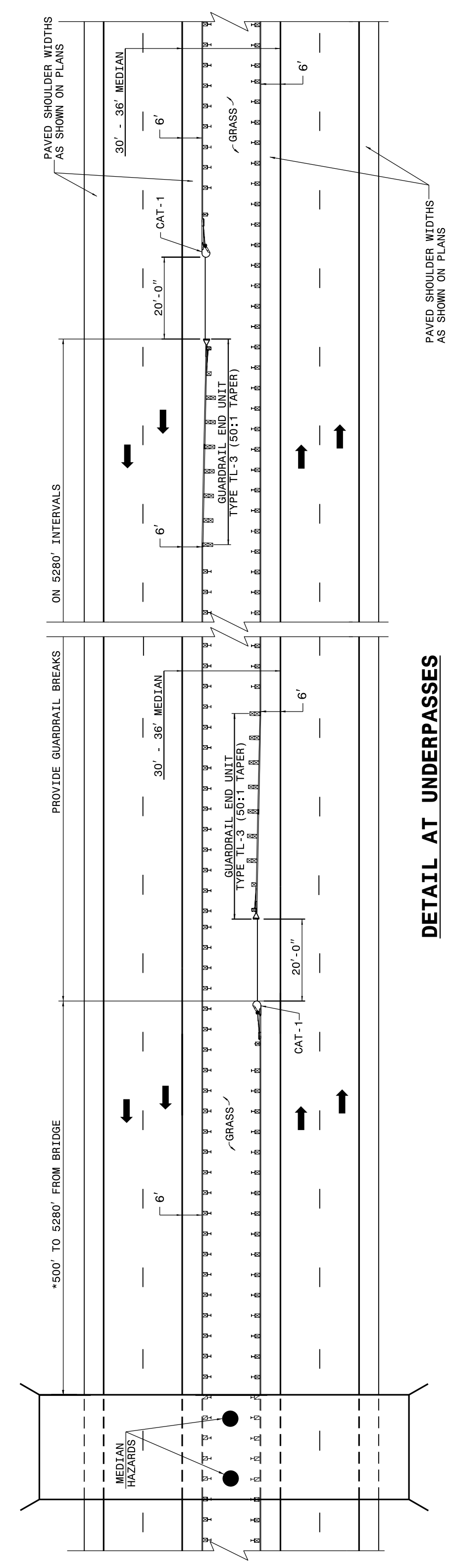
ROADWAY DETAIL DRAWING FOR GUARDRAIL PLACEMENT

SHEET 7 OF 11 862D01

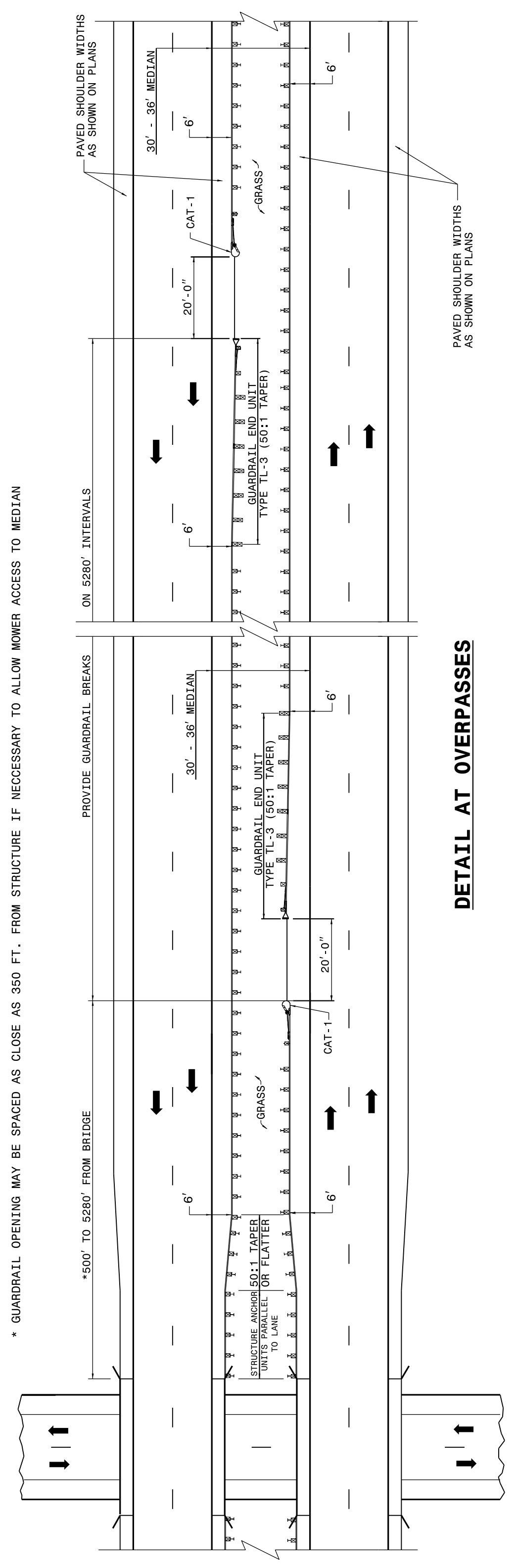
STATE OF NORTH CAROLINA DEPT. OF TRANSPORTATION DIVISION OF HIGHWAYS RALEIGH, N.C.

ROADWAY DETAIL DRAWING FOR GUARDRAIL PLACEMENT

SHEET 7 OF 11 862D01



DETAIL AT UNDERPASSES

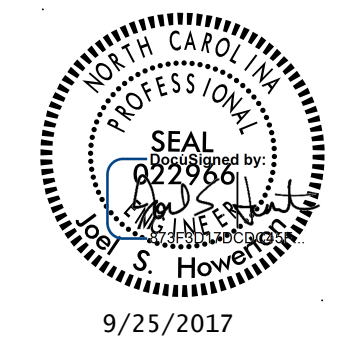


DETAIL AT OVERPASSES

FOR POSTED SPEEDS ≥ 45mph USE GREU TYPE TL-3
FOR POSTED SPEEDS < 45mph USE GREU TYPE TL-2

GUARDRAIL BREAK INTERVALS WITH 30' - 36' MEDIANS

CONTRACT STANDARDS AND DEVELOPMENT UNIT
Office 919-707-6950 FAX 919-250-4119
SEE TITLE BLOCK
ORIGINAL BY: J HOWERTON DATE: 06-22-12
MODIFIED BY: DATE:
CHECKED BY: DATE:
FILE SPEC.:



DOCUMENT NOT CONSIDERED FINAL UNLESS ALL SIGNATURES COMPLETED