

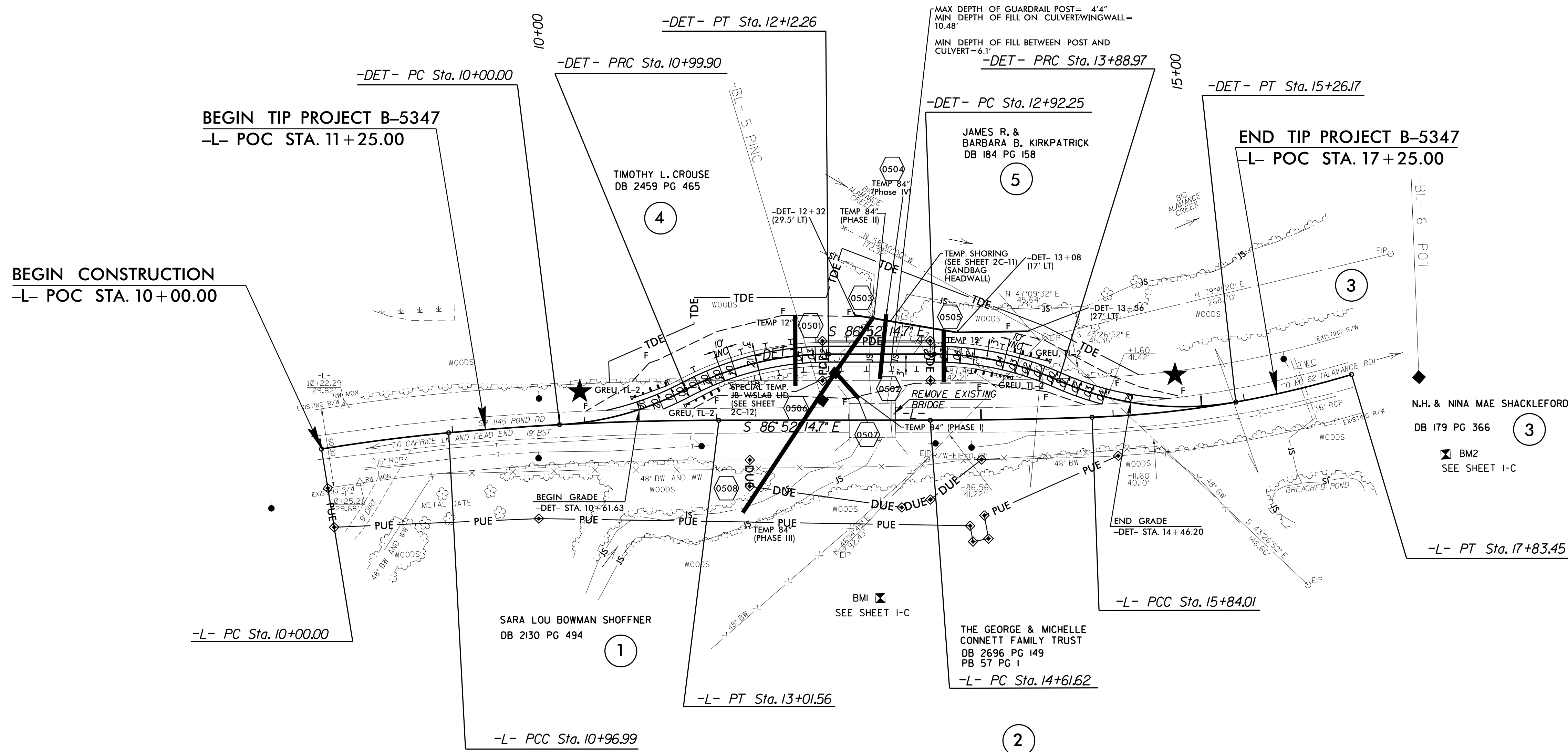
DETAIL FOR ONSITE DETOUR



Prepared In the Office of:
JOHNSON, MIRMAN, & THOMPSON, INC.
1130 Situs Court, Suite 200, Raleigh NC, 27606

PROJECT REFERENCE NO. B-5347	SHEET NO. 2B-1
RW SHEET NO.	
ROADWAY DESIGN ENGINEER	HYDRAULICS ENGINEER
9/25/2017	9/25/2017
DOCUMENT NOT CONSIDERED FINAL UNLESS ALL SIGNATURES COMPLETED	

-DET- VDET - 25 MPH			
PI Sta 10+50.74 Δ = 24° 46' 42.9" (LT) D = 24' 48' 12.1" L = 99.90' T = 50.74' R = 231.00' SE = 4% RO = 40'	PI Sta 11+57.21 Δ = 27° 52' 08.7" (RT) D = 24' 48' 12.1" L = 112.36' T = 57.31' R = 231.00' SE = 4% RO = 40'	PI Sta 13+41.33 Δ = 23° 59' 18.3" (RT) D = 24' 48' 12.1" L = 96.71' T = 49.08' R = 231.00' SE = 4% RO = 40'	PI Sta 14+59.66 Δ = 34° 01' 52.7" (LT) D = 24' 48' 12.1" L = 137.20' T = 70.69' R = 231.00' SE = 4% RO = 40'



BEGIN CONSTRUCTION
-L- POC STA. 10+00.00

BEGIN TIP PROJECT B-5347
-L- POC STA. 11+25.00

END TIP PROJECT B-5347
-L- POC STA. 17+25.00

PROPOSED SIGNALIZED
ONE LANE - 2 WAY DETOUR
★ DENOTES TEMPORARY SIGNALS

SEE EROSION CONTROL PLANS FOR
CULVERT CONSTRUCTION SEQUENCE PLAN

SEE SHEET 4 FOR MAINLINE (-L-)
SEE SHEET 5 FOR PROFILE