

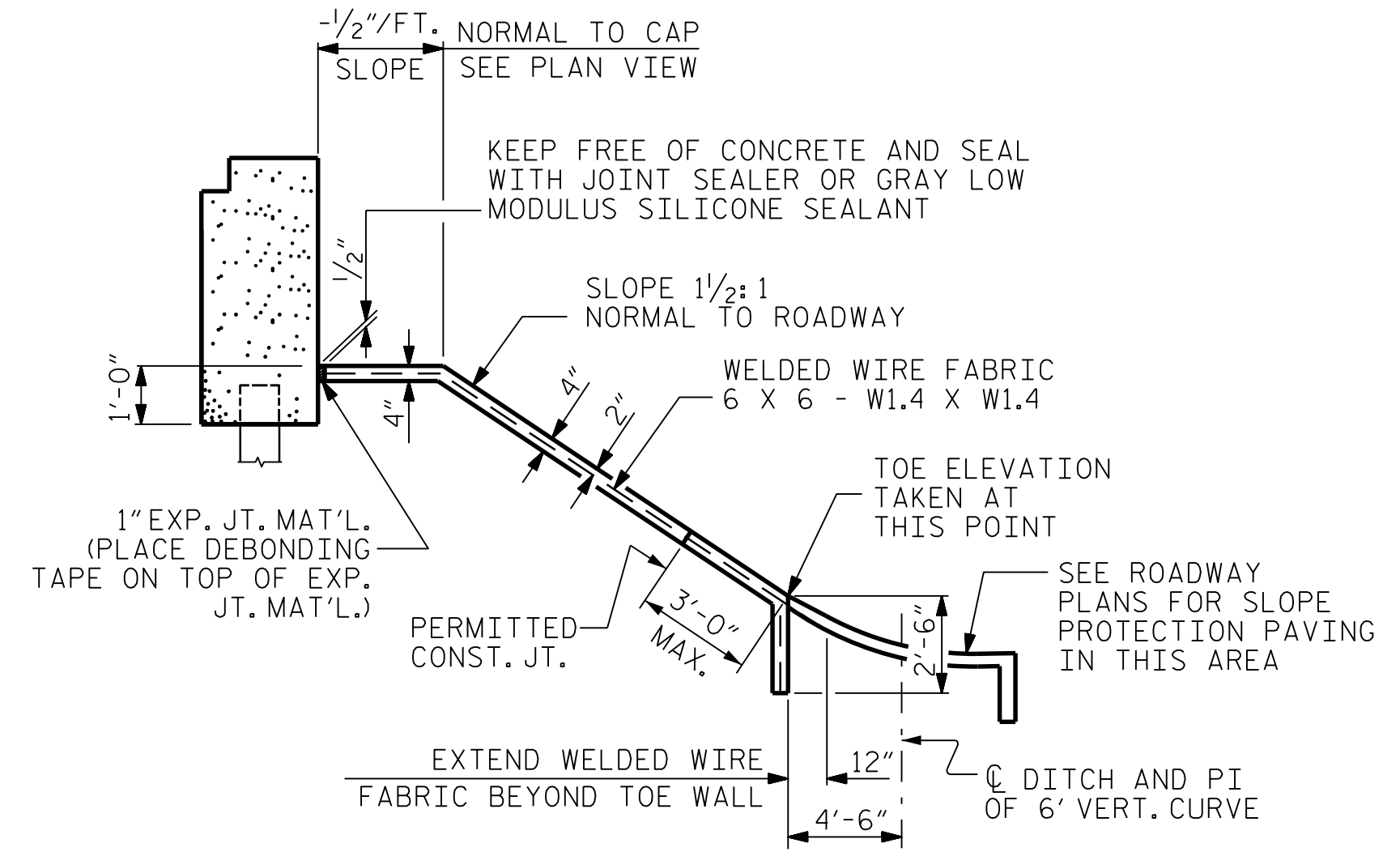
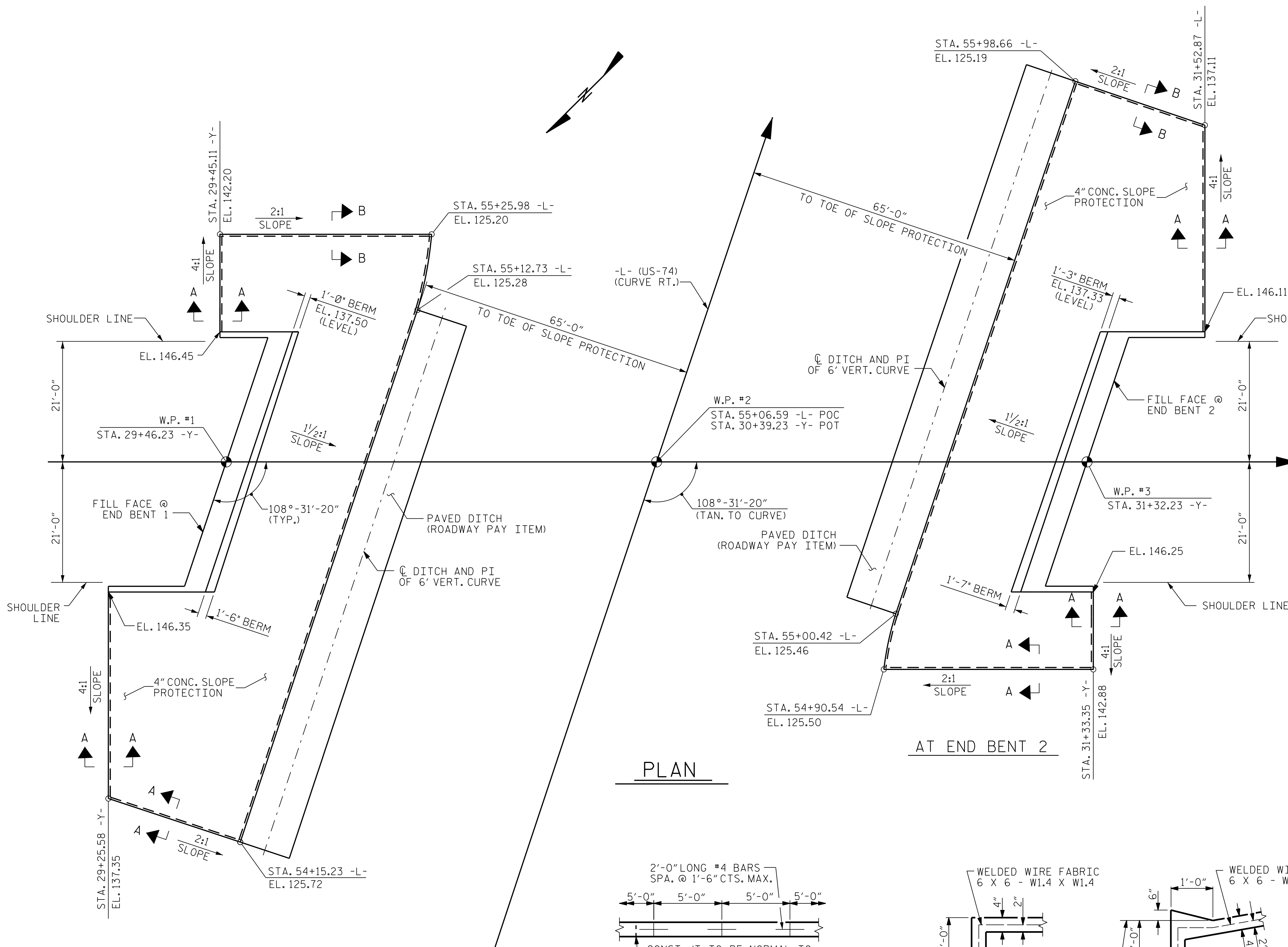
GENERAL NOTES

SLOPE PROTECTION SHALL BE PLACED UNDER THE ENDS OF THE BRIDGE AS SHOWN IN THE DETAILS. STRAIGHT EDGING WILL NOT BE REQUIRED UNLESS, IN THE OPINION OF THE ENGINEER, VISUAL INSPECTION INDICATES A NEED FOR IT. MEASUREMENT AND PAYMENT SHALL BE AS PRESCRIBED IN SECTION 462 OF THE STANDARD SPECIFICATIONS.

SLOPE PROTECTION SHALL CONSIST OF 4" POURED-IN-PLACE CONCRETE PAVING AS SHOWN IN THE DETAILS ON THIS SHEET. CONCRETE SHALL BE CLASS "B". THE CONCRETE SURFACE SHALL BE FLOATED WITH A WOODEN FLOAT AND FINISHED. WELDED WIRE FABRIC REINFORCING SHALL BE 6 X 6 - W1.4 X W1.4, 60" WIDE. SLOPE PROTECTION SHALL BE POURED IN 5' STRIPS AS SHOWN IN THE "POURING DETAIL" WITH 2'-0" LONG #4 BARS PLACED ALONG THE SLOPE BETWEEN STRIPS AT 1'-6" MAXIMUM SPACING. SLOPE PROTECTION MAY BE POURED IN ALTERNATE 4' AND 5' STRIPS AS SHOWN IN THE "OPTIONAL POURING DETAIL" WITH ADJACENT RUNS OF WELDED WIRE FABRIC LAPPING AT LEAST 6". THE COST OF THE WELDED WIRE FABRIC AND #4 BARS, IF USED, SHALL BE INCLUDED IN THE CONTRACT UNIT PRICE BID PER SQUARE YARD FOR SLOPE PROTECTION.

BRIDGE @ STA. 30+39.23 -Y-	4" INCH SLOPE PROTECTION SQUARE YARDS	* WELDED WIRE FABRIC 60 INCHES WIDE APPROX. L.F.
END BENT 1	445	900
END BENT 2	430	860

* QUANTITY SHOWN IS BASED ON 5' POURS.

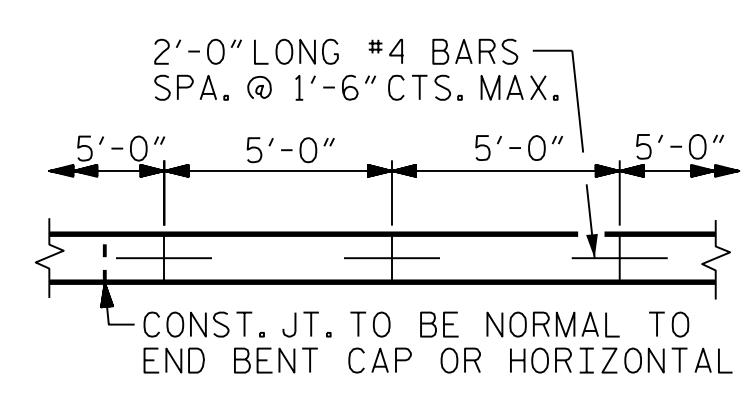


SECTION ALONG C ROADWAY WHEN FILL CATCHES IN DITCH

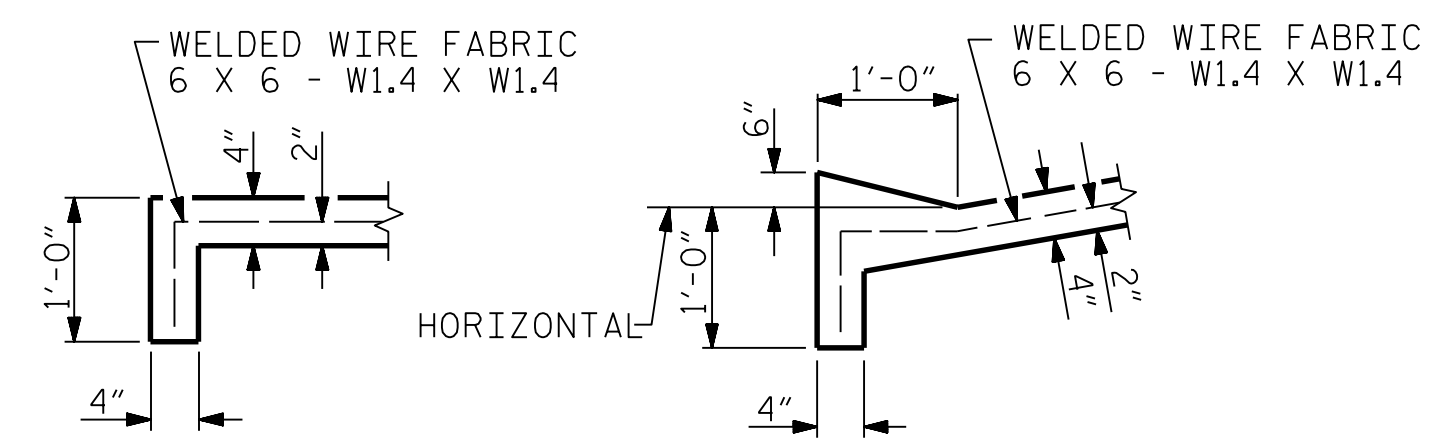
PLAN

AT END BENT 2

AT END BENT 1

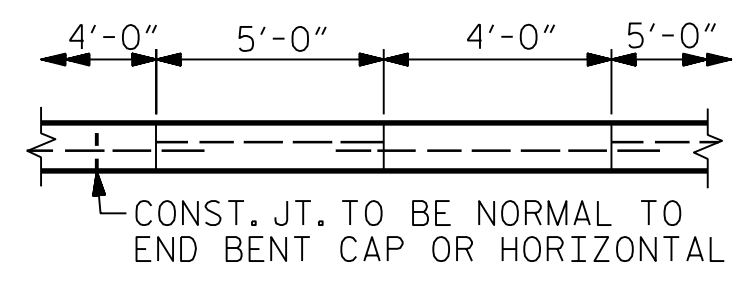


POURING DETAIL



SECTION A-A

SECTION B-B



OPTIONAL POURING DETAIL

PROJECT NO. R-5752
 ROBESON COUNTY
 STATION: 30+39.23 -Y-

STATE OF NORTH CAROLINA
 DEPARTMENT OF TRANSPORTATION
 RALEIGH

STANDARD
 SLOPE PROTECTION
 DETAILS

DOCUMENT NOT CONSIDERED FINAL UNLESS ALL SIGNATURES COMPLETED

7/10/2017

SEAL
 33698
 ENGINEER
 JOSHUA B. TAYLOR

CDM Smith
 CDM SMITH
 5400 Glenwood Avenue, Suite 400
 Raleigh, NC 27612-3228
 NC COA No. F-1255

DRAWN BY: A.L. STROUD DATE: 03/17
 CHECKED BY: J.B. TAYLOR DATE: 03/17
 DESIGN ENGINEER: J.B. TAYLOR DATE: 03/17

DWG. No.

REVISIONS				SHEET NO.	
NO.	BY:	DATE:	NO.	BY:	DATE:
1			3		
2			4		

TOTAL SHEETS: **24**

FILE: c:\edmm\jaylor\p\0231787\001_045_82725_SMU_SP_023_770512.dgn
 DATE: 7/10/2017 2:14:59 PM